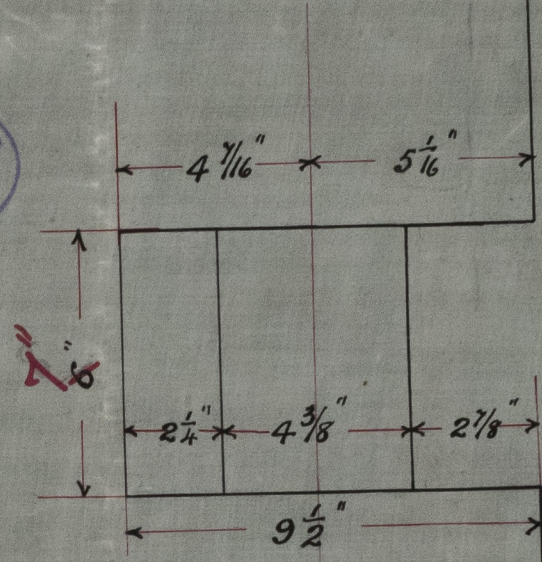


Plan of Cast Steel Stern Frame S.S. No. 120

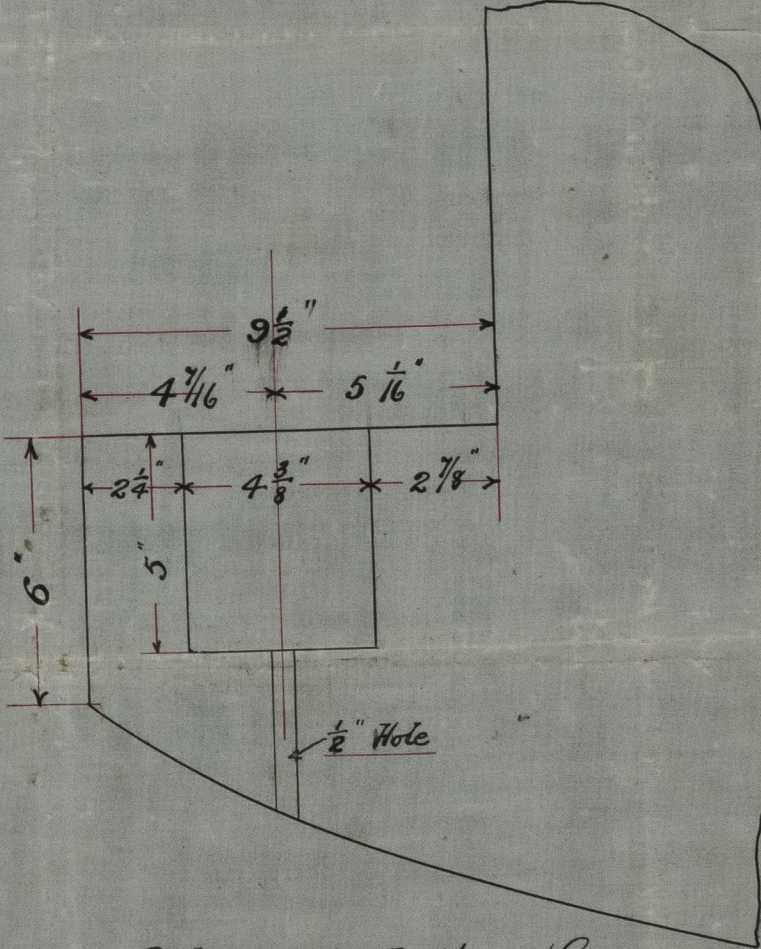
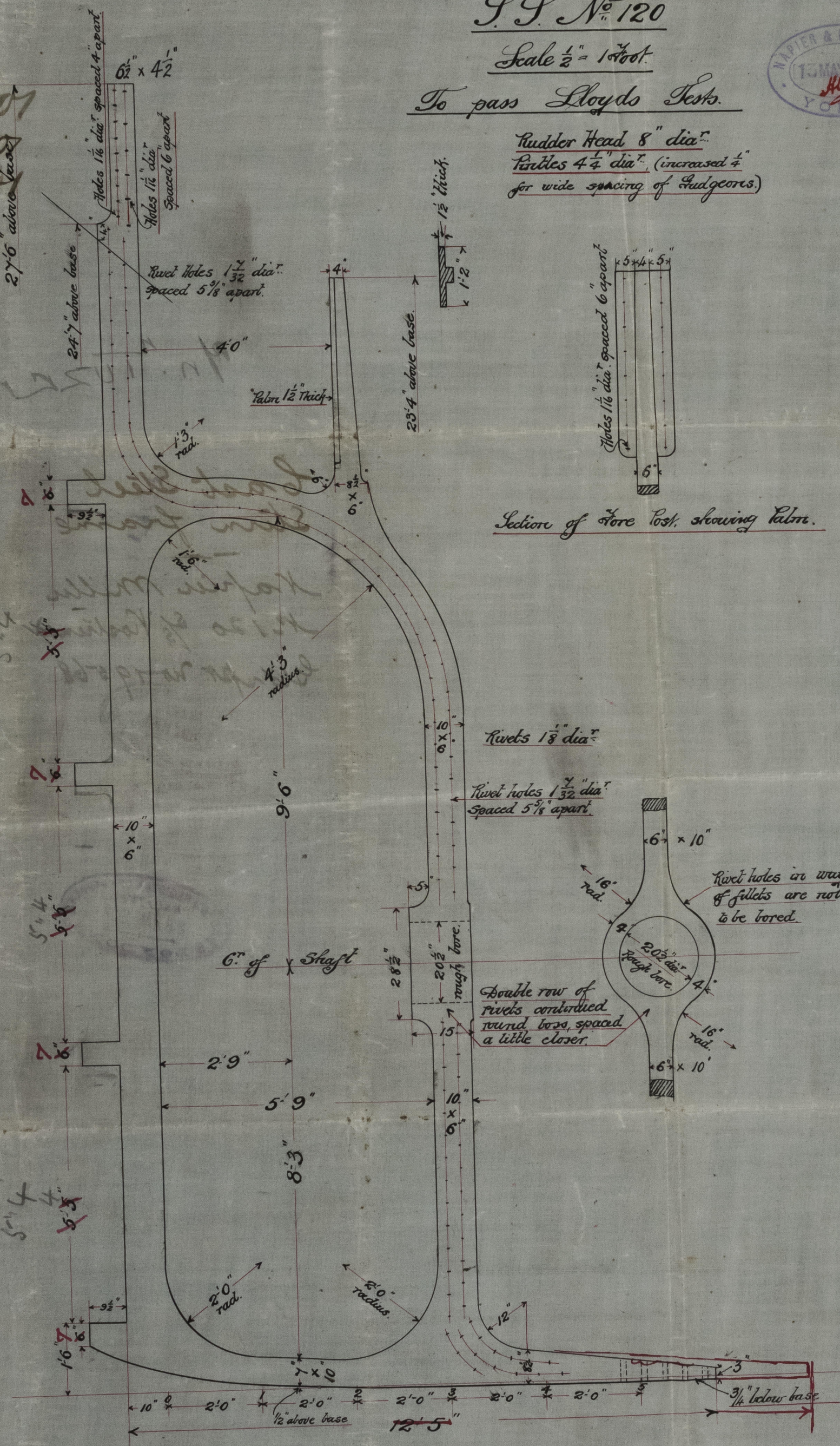
Scale $\frac{1}{2}'' = 1'$ foot.

To pass Lloyd's Tests.

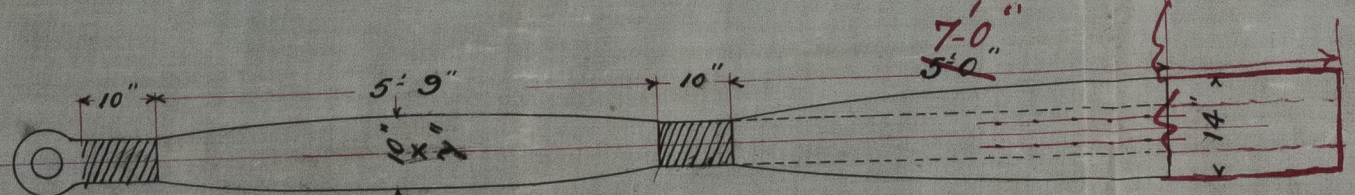
Rudder Head 8" dia.
Rivets $4\frac{1}{2}''$ dia. (increased $\frac{1}{4}''$
for wide spacing of Gudgeons.)



Section of Gudgeons
Scale 3" = 1 foot



Section of Bottom Gudgeon
Scale 3" = 1 foot



Plan of Bottom of Post



Plan of Port
1721

Scale 1/2"

To show the

position of the
Port 1721

1721

Section of

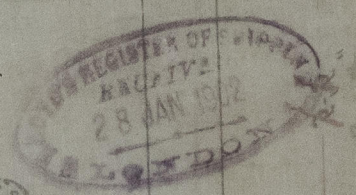
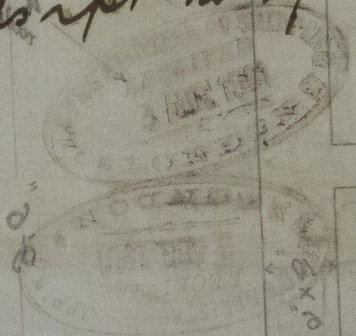
1721

1721

Yn. TUZZA

Cast Steel
Stern frame

Kapier Millu
N. 120 S. Kostuna
Es. 19568



© 2020

Lloyd's Register
Foundation

009493-009504-0131