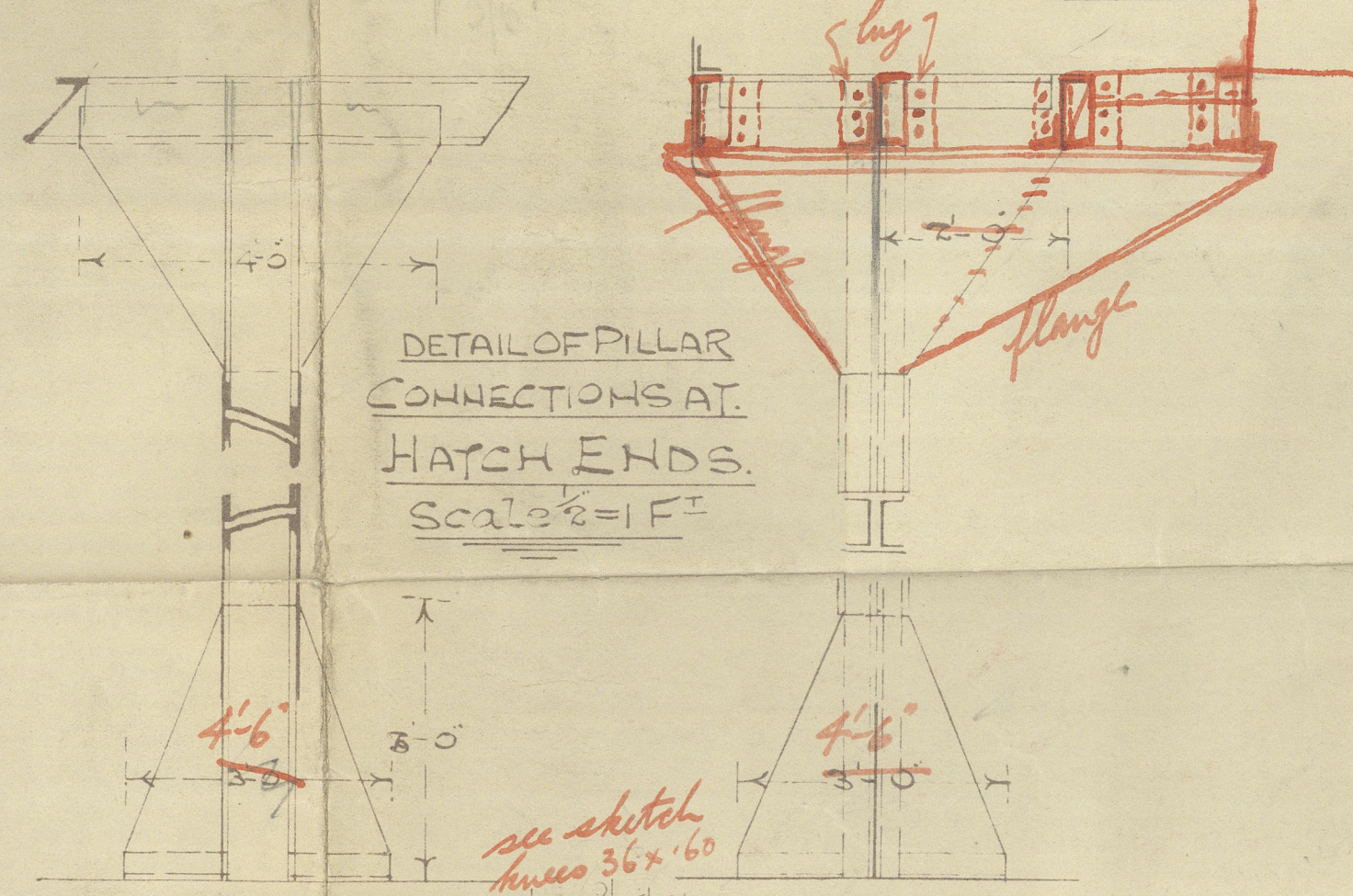
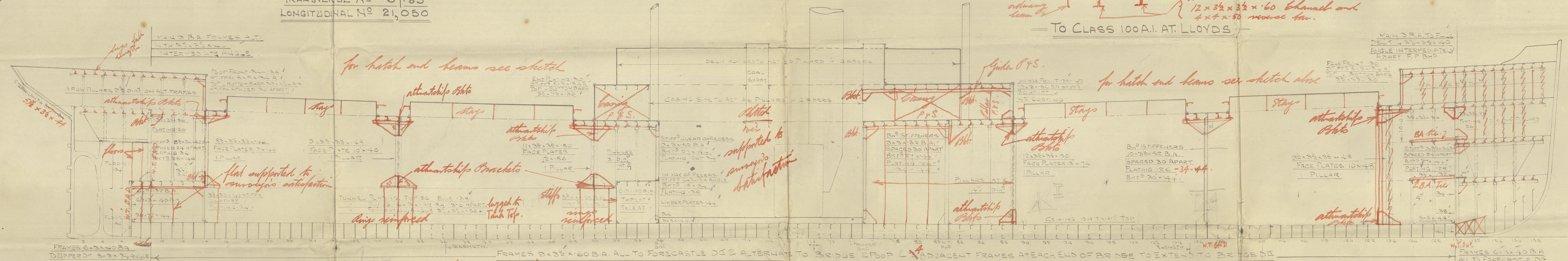


28.11.19.
(142) P. 1. 20.

TRANSVERSE NO 67.83
LONGITUDINAL NO 21,050

to be fitted at beams
to take deck girder angles

All hatch end beams thru
deck
2 beams next hatch end
12x32x32x60 channel and
4x4x50 corner bar.
To CLASS 100A.I. AT LLOYDS



1/2\"/>

see sketch
knees 36x60

see sketch
knees 36x60

see sketch
knees 36x60

hatch end beams
see sketch
knees 36x60

for hatch end beams
see sketch
knees 36x60

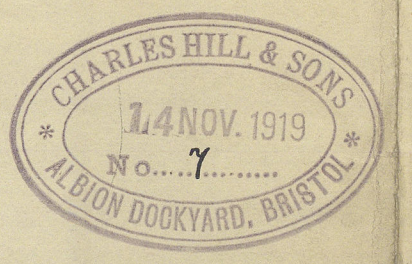
— S.S. NO 141 —
PROFILE & DECKS
DIMENSIONS 310'-0\"/>

1/2\"/>

6x6 bars at corner
of all hatches

4\"/>

B.A.
runner

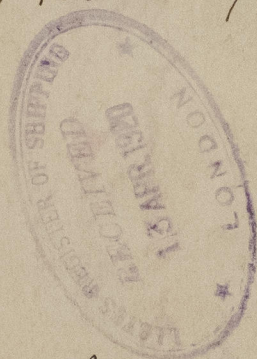


C. Hill & Sons N^o/41
& 142

Profile Decks

SS Mountpark

Bristol First Entry Report 10673



SS Sagalana

Bristol First Entry Report

10740



Bristol
18/11/19
G. A. H.

Lloyd's Register
Foundation