

(142) 28.11.19. S.S. No 141. MIDSHIP SECTION. MOULDED DIMENSIONS 310'-0" x 44'-0" x 23'-10" TO UPPER DECK
8.1.20. CLASS 100 A1 LLOYDS.

SCALE 1/2" = 1 FOOT.



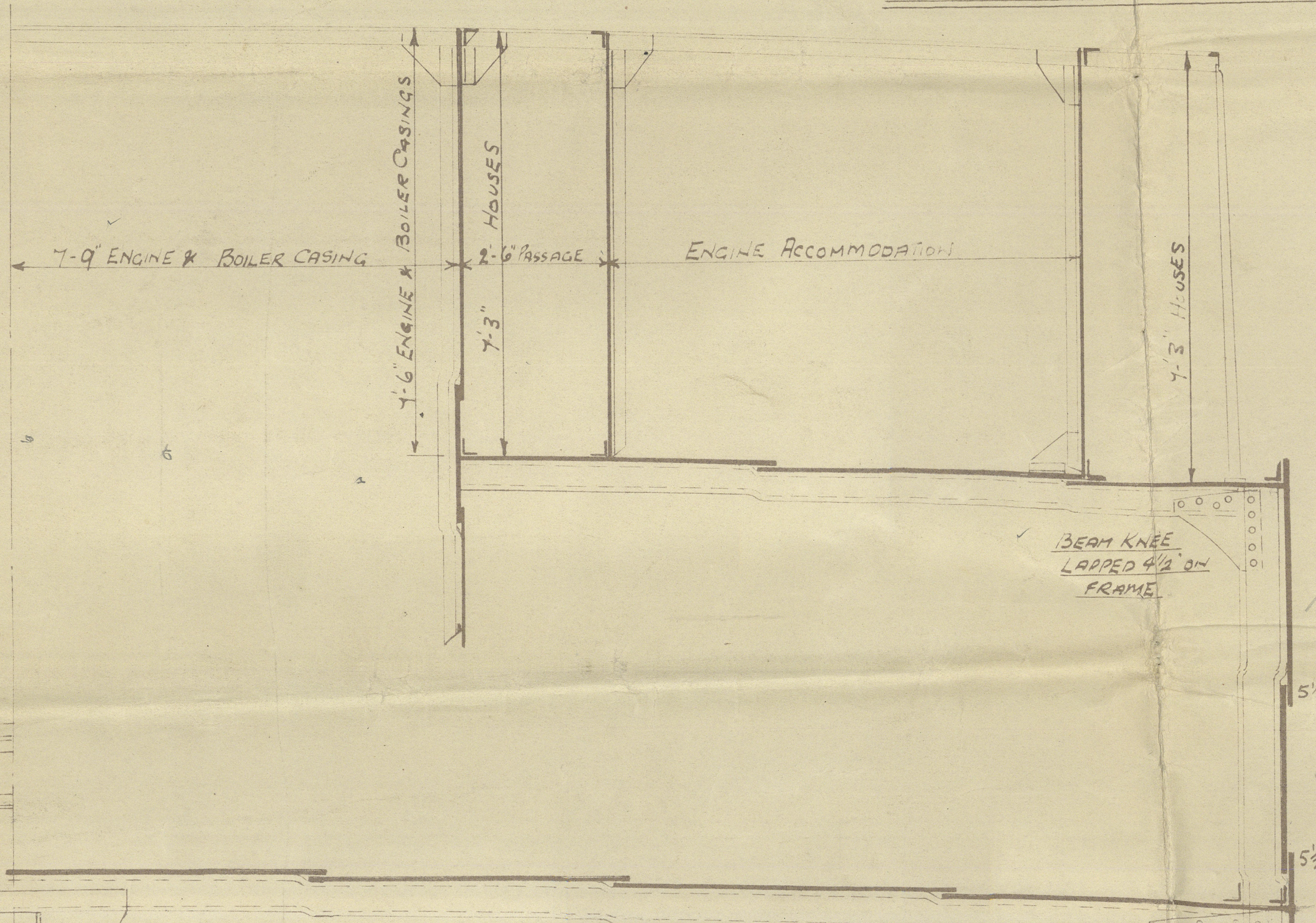
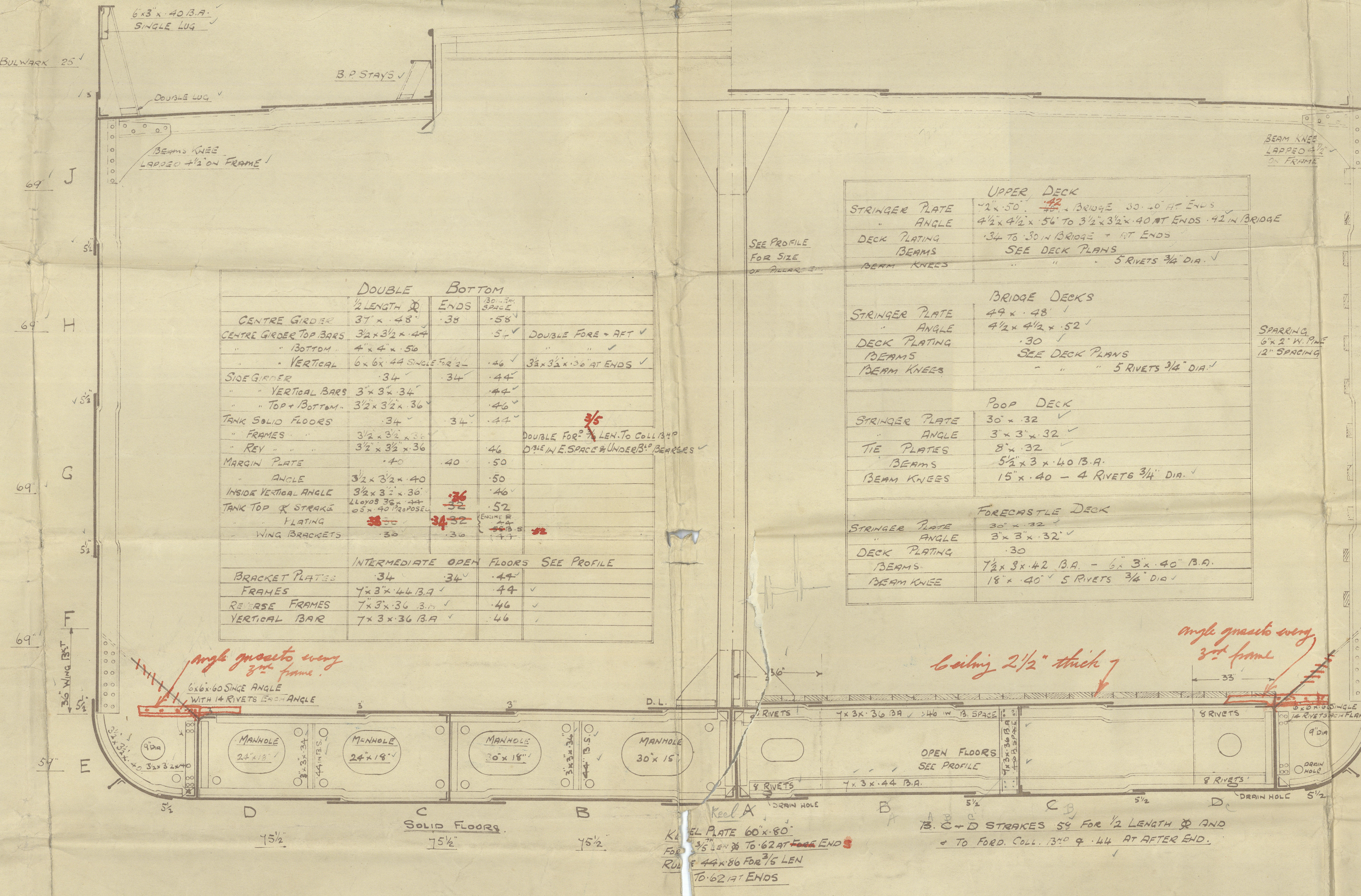
LLOYDS NUMERALS
B + D 44'-0" + 23'-8 1/2" = 67'-8 1/2"
B + D x L 44' x 23'-8 1/2" x 310' = 21,030
To BRIDGE DECK = 9.9
To UPPER DECK = 13.00
d = 20'-0"

EQUIPMENT NUMBER	
L x (B + D)	21,030
BRIDGE 87'-15" x 7'-5" x 3/4"	494
POOP 28' x 7'-5" x 3/4"	158
FORECASTLE 32'-5" x 7'-5" x 3/4"	163
DECK HOUSES 63' x 7'-5" x 1/2"	244
EQUIPMENT NUMBER 22109	
EQUIPMENT	
TWO STOCKLESS BOWER ANCHORS EACH 42 CWT	352 CWT
ONE STEEL ANCHOR 11 CWT EX STOCK	
KEDGE	5 1/4 CWT
240 FATHOMS 1 1/2" STUD CHAIN CABLE	
75 " 1 1/2" STEEL WIRE	
100 "	
TWO 10 " 7" MANILLA HAWSEYS	
TWO 10 " 6 " "	

FRAMING	
FRAME SPACING	FRAMES IN FORE & AFTER PEAKS SPACED 24" APART
	FRAMES IN HOLDS & MACHINERY SPACED 21" APART
FRAMES	6" x 3" x 40" B.A. ALL TO FORECASTLE IN PEAKS ALTERNATE FRAMES IN POOP 3 1/2" x 3 1/2" x 40"
FRAMES BETWEEN	5" x 3" x 34" ANGLE EVERY FRAME BRACKETED POOP & UPPER DECK 5" x 3" x 40" INTERMEDIATE ANGLE FRAMES IN POOP ABOVE AFTER PEAK BRIDGE & FORECASTLE (CLEAR OF PEAKS) SCARFED DOWN IN WAY OF FORECASTLE MAIN FRAMES 9" x 3" x 40" ALTERNATELY TO FORECASTLE DECK & ALTERNATELY TO BRIDGE POOP & TO BRIDGE DECK INCREASED 9" x 3" x 40"

RIVETING LIST		
BUTT & BUTT LAPS	1/2 LENGTH &	AT ENDS
KEEL PLATE	QUADRUPLE	TREBLE
SHEERSTRAKE	QUADRUPLE	DOUBLE
OUTSIDE PLATING FROM KEEL TO UPPER TURN OF BILGE	QUADRUPLE	
OUTSIDE PLATING FROM UPPER TURN OF BILGE TO SHEERSTRAKE	RIVETED WHERE OVER LAP NOT IN	DOUBLE
UPPER DECK STRINGER PLATING	TREBLE	DOUBLE
BRIDGE STRINGER PLATING	TREBLE	DOUBLE
POOP STRINGER PLATING	DOUBLE	DOUBLE
FORECASTLE DECK STRINGER PLATING	DOUBLE	DOUBLE
CENTRE GIRDER MARGIN PLATE	TREBLE	DOUBLE
TANK TOP ENTIRE SPACE PLATING	DOUBLE	SINGLE

EDGE CONNECTIONS		
SHEERSTRAKE KEEL	DOUBLE LAND	DOUBLE LAND
OUTSIDE PLATING FROM KEEL TO UPPER TURN OF BILGE	DOUBLE LAND	DOUBLE LAND
OUTSIDE PLATING FROM UPPER TURN OF BILGE TO SHEERSTRAKE	DOUBLE LAND	DOUBLE LAND
PLATING IN WAY OF BRIDGE	DOUBLE LAND	
PLATING IN WAY OF POOP & FORECASTLE		SINGLE LAND
TANK TOP LANDINGS	SINGLE LAND	SINGLE LAND
DECK PLATING & STRINGERS	SINGLE LAND	SINGLE LAND



UPPER DECK	
STRINGER PLATE	2 1/2" x 50' - 42' BRIDGE 30' x 40' AT ENDS
ANGLE	4 1/2" x 4 1/2" x 50' TO 3 1/2" x 3 1/2" x 40' AT ENDS .42 IN BRIDGE
DECK PLATING	.34 TO .30 IN BRIDGE - AT ENDS
BEAMS	SEE DECK PLANS
BEAM KNEES	" 5 RIVETS 3/4" DIA.
BRIDGE DECKS	
STRINGER PLATE	4 1/2" x 48'
ANGLE	4 1/2" x 4 1/2" x .52
DECK PLATING	.30
BEAMS	SEE DECK PLANS
BEAM KNEES	" 5 RIVETS 3/4" DIA.
POOP DECK	
STRINGER PLATE	30' x 32'
ANGLE	3" x 3" x 32'
TIE PLATES	8" x 32'
BEAMS	5 1/2" x 3" x 40 B.A.
BEAM KNEES	15' x 40' - 4 RIVETS 3/4" DIA.
FORECASTLE DECK	
STRINGER PLATE	30' x 32'
ANGLE	3" x 3" x 32'
DECK PLATING	.30
BEAMS	7 1/2" x 3" x 42 B.A. - 6" x 3" x 40" B.A.
BEAM KNEES	18' x 40' 5 RIVETS 3/4" DIA.

54" x 56" PROPOSED (RULE 44.54)
50" IN WAY OF BRIDGE
POOP
FORECASTLE
5" IN WAY OF BRIDGE
POOP
FORECASTLE
To BE INCREASED OR FOR
INCREASED FRAME SPACING
SHEERSTRAKE RULE 44.14
PROPOSED
90" AT BREAK .50 IN WAY OF BRIDGE
To BE INCREASED OR FOR INCREASED FRAME SPACING
= 69 1/2" x 70' FOR 1/2 LEN & 76.42 AT ENDS
H. STRAKE .60 FOR 1/2 LEN & TO .44 AT ENDS
50" IN WAY OF BRIDGE
F. & A. STRAKES .58 FOR 1/2 LEN &
TO .44 AT ENDS
Tank wing
bracket in way of
gunport angle
Tank top
58" to 44"

C. Hill & Sons N^o 141
& 142

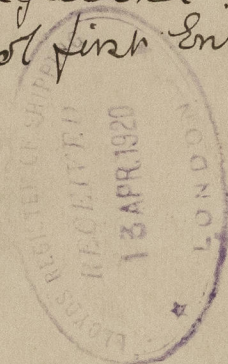
Midship Section

SS Mountpark

Bristol first Entry Report 10673

SS Sagalana

Bristol first Entry Report 10740



Bristol
18/11/19
E.A.D.S.

009514-009521-0024



© 2021
Lloyd's Register
Foundation