

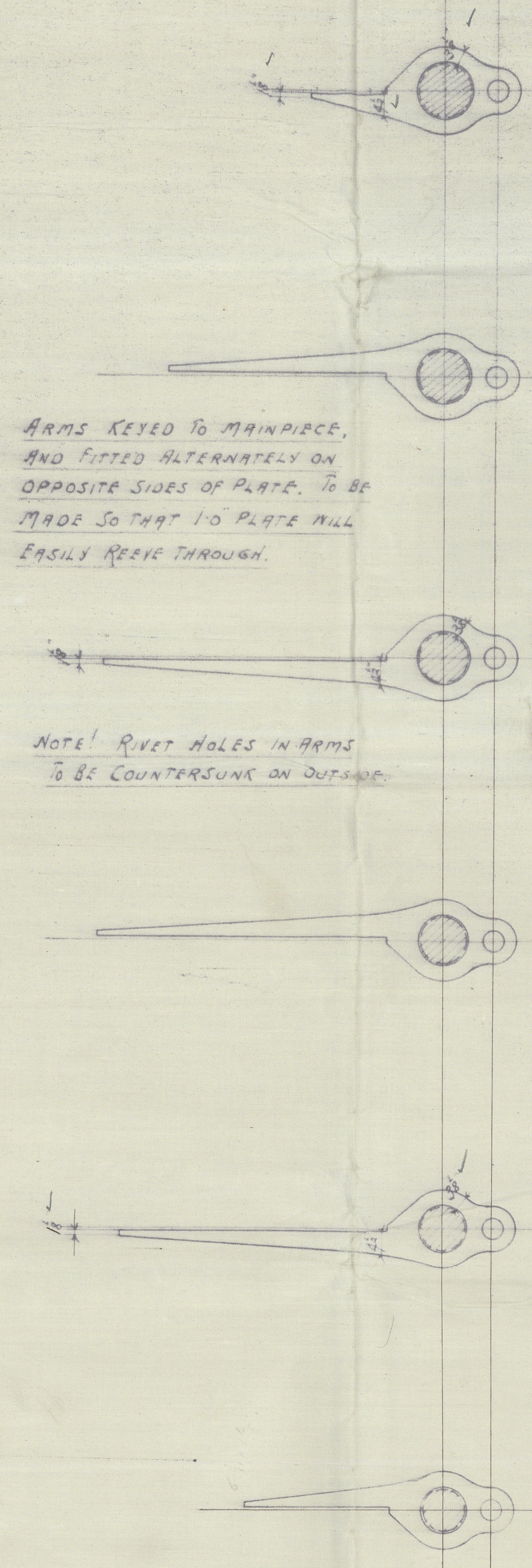
S. S. 227.

FORGED IRON RUDDER FRAME.

TO PASS LLOYD'S TESTS.

FIGURED DIMENSIONS TO BE WORKED TO IN EVERY CASE

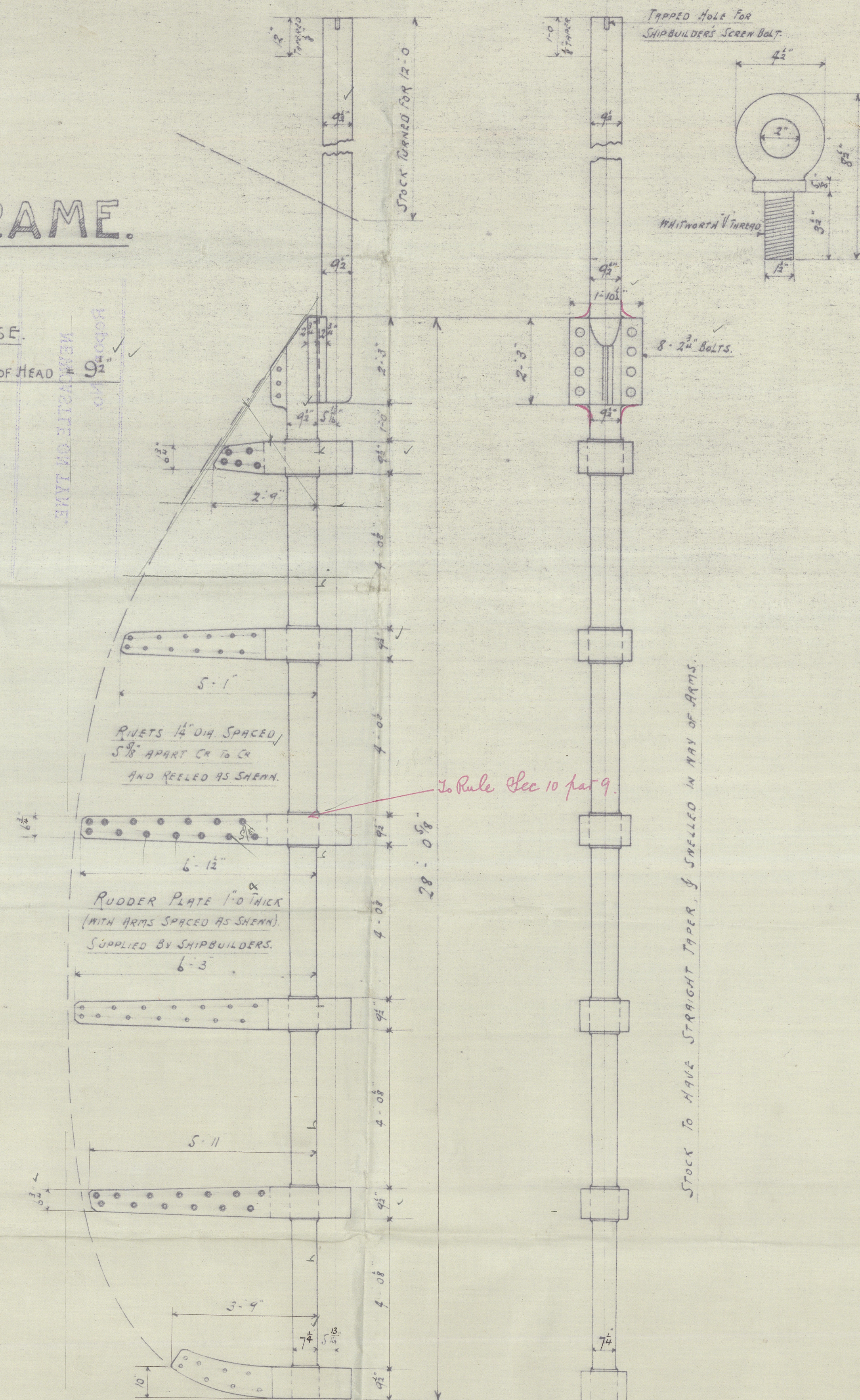
A (By Calculation) = 136 sq ft; D = 3.25 ft; $A \times D = 136 \times 3.25 = 442$; SPEED = 11 KNOTS; DIA OF HEAD = 9"



ARMS KEYED TO MAINPIECE,
AND FITTED ALTERNATELY ON
OPPOSITE SIDES OF PLATE. TO BE
MADE SO THAT 1" PLATE WILL
EASILY PASS THROUGH.

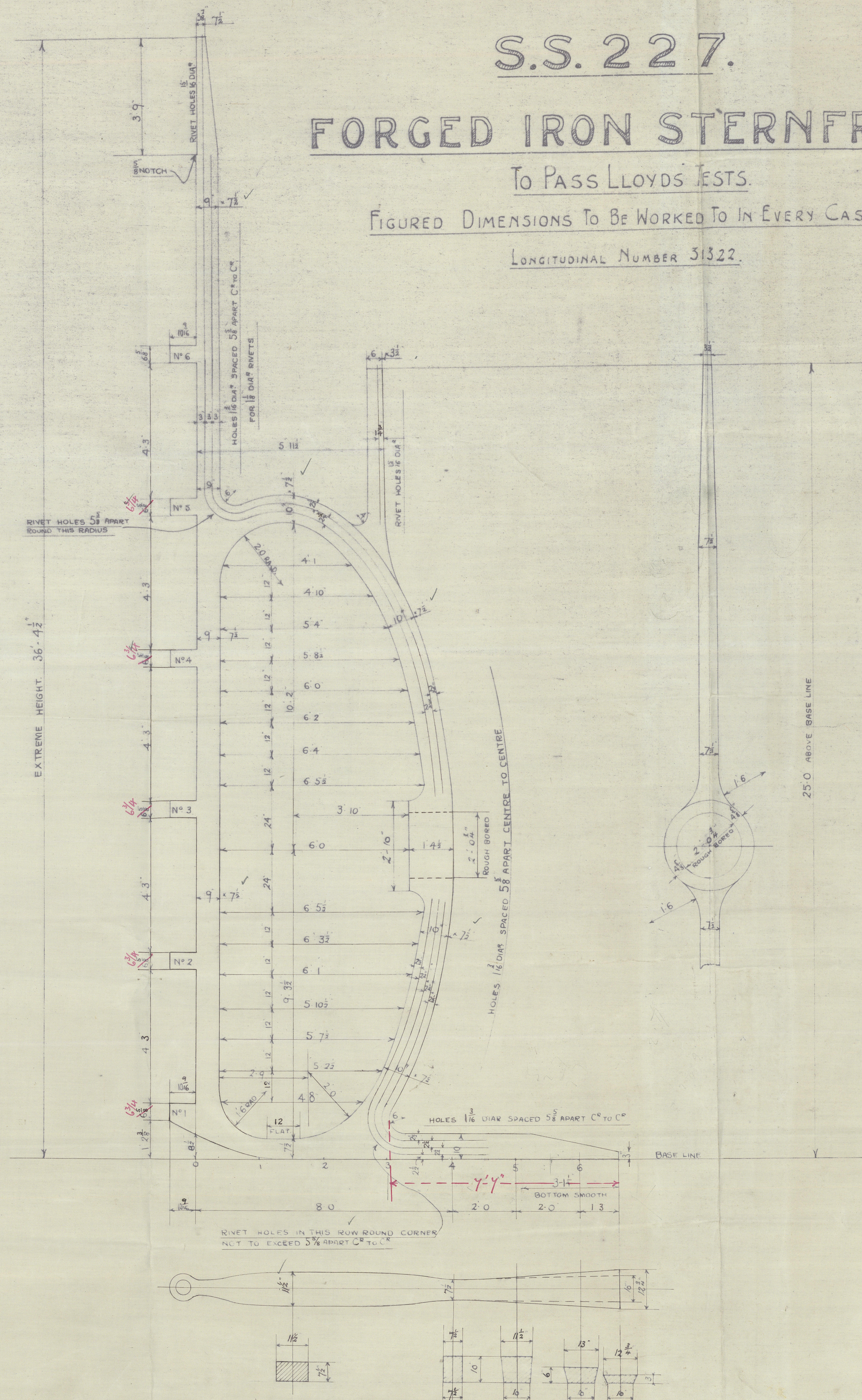
NOTE! RIVET HOLES IN ARMS
TO BE COUNTERSUNK ON OUTSIDE

<u>LENGTH OF RUDDER</u>	
HEIGHT OF POOP DECK AT SIDE	41 - 2
CAMBER AT SQUARE	5
THICKNESS OF POOP DECK	3
TOTAL HEIGHT OF POOP DK AT CENTRE	41 - 0
HEEL OF RUDDER UP	1 - 10
BOTTOM OF RUDDER TO POOP DK	40 - 0
STOCK ABOVE DECK	2 - 11
SCORE	1
TOTAL LENGTH OF RUDDER	43 - 3



STOCK TO HAVE STRAIGHT TAPER & SHELLED IN WAY OF ARTS.

— To Rule Sec 10 par 9



S.S. 227.

FORGED IRON STERNFRAME.

TO PASS LLOYD'S TESTS

FIGURED DIMENSIONS TO BE WORKED TO IN EVERY CASE.

LONGITUDINAL NUMBER 31322

NOTE! CORRECT LENGTH OF
TOP PINTLE TO BE MEASURED
WHEN RUDDER IS COMPLETE
AND HEAD TO BE $\frac{1}{4}$ " CLEAR
OF GUDGEON AS SHOWN.

— Key at each arm

7/8 STEEL DISC
1 HOLE.

Northumberland S. Co Ltd

S.S. 227

Stern frame and Rudder
plan



SS "TANFIELD"
NEWCASTLE ON TYNE.

Report No. 68844

227 Rudder



© 2021

Lloyd's Register
Foundation