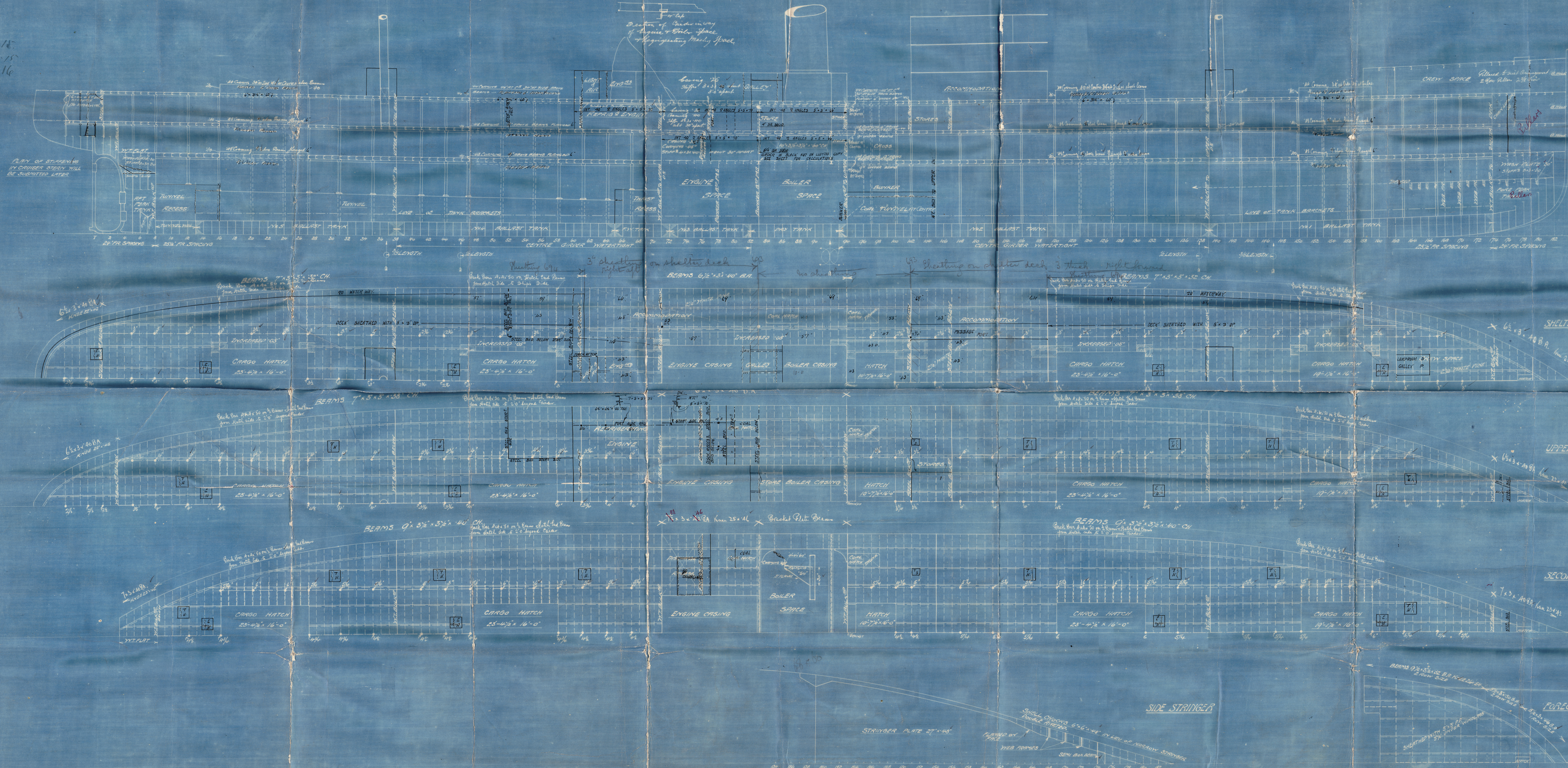
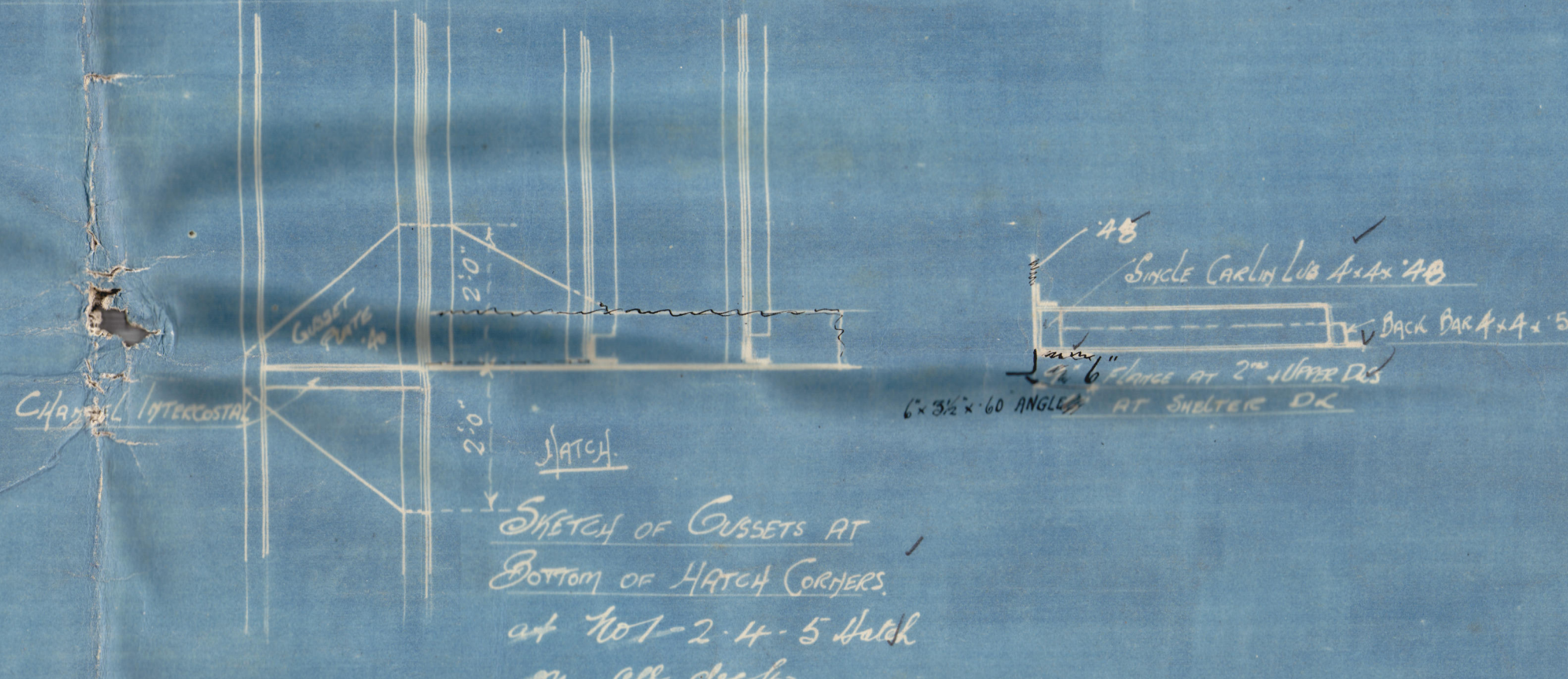


25.3.15  
21.9.15  
B.1.16



# GIRDER, OR PILLAR, LONGITUDINAL & DECK PLANS S.S. Nos 693 & 694

Dim 590'-0" B.P. x 53'-0" M<sup>2</sup> - 53'-3" EXT. 56'-0" M<sup>2</sup> to SHELTER DECK  
TO CLASS 100A1 AT LLOYD'S, SPECIAL SURVEY,  
VESSEL TO CARRY CHILLED MEAT HUNG FROM BEAMS  
SCALE: 1/8" = 1' 0"



THE SCANTLING AND DETAILS OF CONSTRUCTION  
NOTED HEREON ARE SUBMITTED ON THE  
UNDERSTANDING THAT THEY ARE THE MINIMUM  
WHICH WILL BE ACCEPTED FOR CLASS, AND IF  
ANY OTHER TO BE REQUIRED EXCEPTS AND  
MODIFICATIONS ACCEPTED

NO TONNAGE OPENING IN SHELTER DECK  
SHEER PLATE 35'  
1/4" LENGTH PLATE 18' 15"  
1/4" LENGTH PLATE 13' 0"  
HIT 24' 00"  
TONNAGE COEFF 75  
ROUND OF BEAM 6"

NOTE: FINE & MAIN MISTS 2 PLATES IN THE ROUND  
BUTTS LAPPED 3/4" ABOVE DECK  
3/4" BELOW  
SEAMS LAPPED & SCALED PROTECTED

25.3.15

Corrected  
for W. No 694



Russell, Esq

693 + 694

Longitudinal

Baric Star

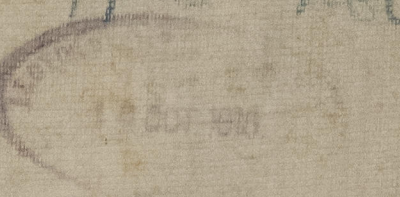
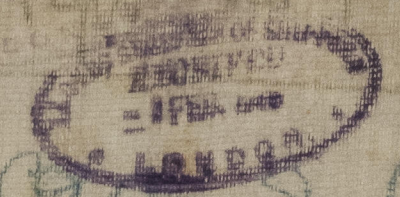
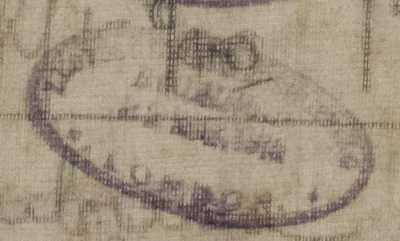
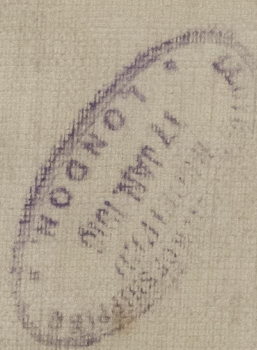
693 Mr. [unclear] EX

SHIP R/R 17205

694 " [unclear]

SHIP R/R 17205

NN [unclear] Hole





RECEIVED  
19 APR 1916  
LONDON

RECEIVED BY SHIP  
19 APR 1916

RECEIVED  
25 SEP 1916  
LONDON

