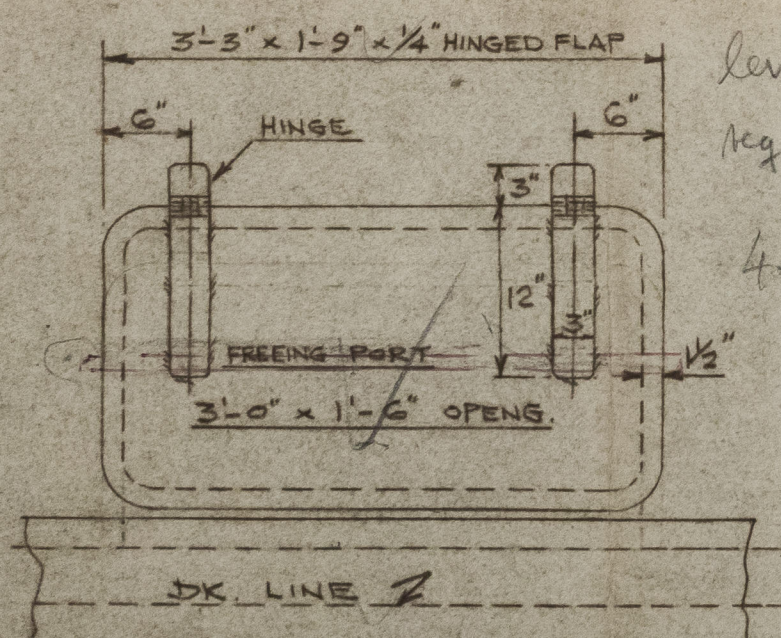
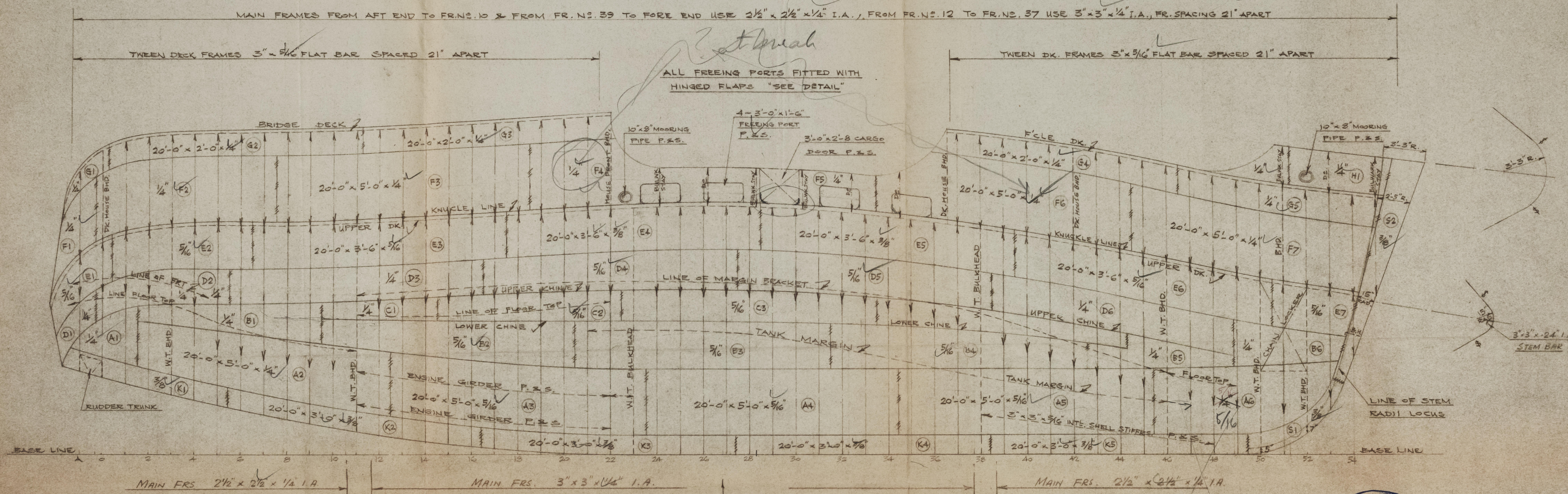
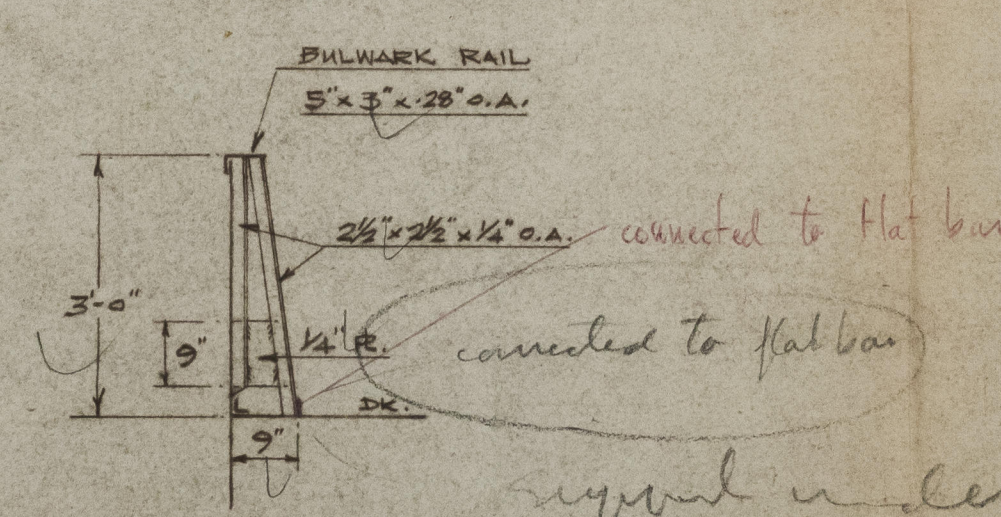
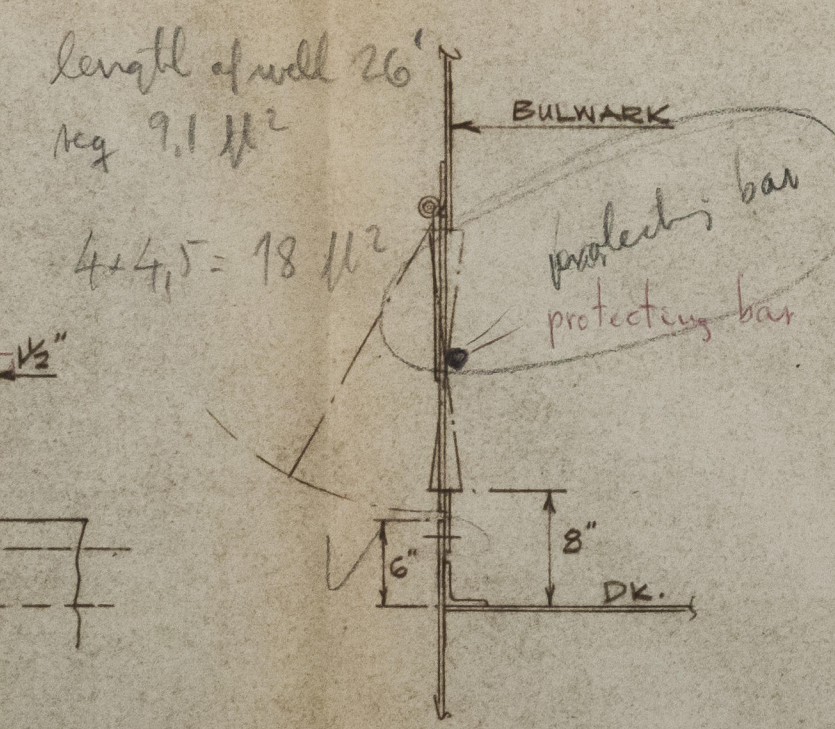


2801.2



DETAIL OF HINGED FLAPS



DETAIL OF BULWARK STAY

DRAWING SHOWING STARBOARD SIDE  
PORT SIDE SIMILAR



HONG KONG TRANSPORTATION CO. LTD. HONG KONG	
TWIN SCREW PASSENGER AND CARGO VESSEL JOB NO. 1086	
SHELL EXPANSION SCALE: - 1/4" = 1'-0"	
DRAWN BY	W. FUNG
CHECKED	K.C. MAK
APPROVED	CH. K. T. GIBSON
DATE	21-2-58
SHEET	19



'DEGEI II'  
M/M.9795

PACIFIC ISLANDS SB. CO.

YARD. NO. 1086.

SHELL EXPANSION.



© 2021

Lloyd's Register  
Foundation

009789-009795-0224