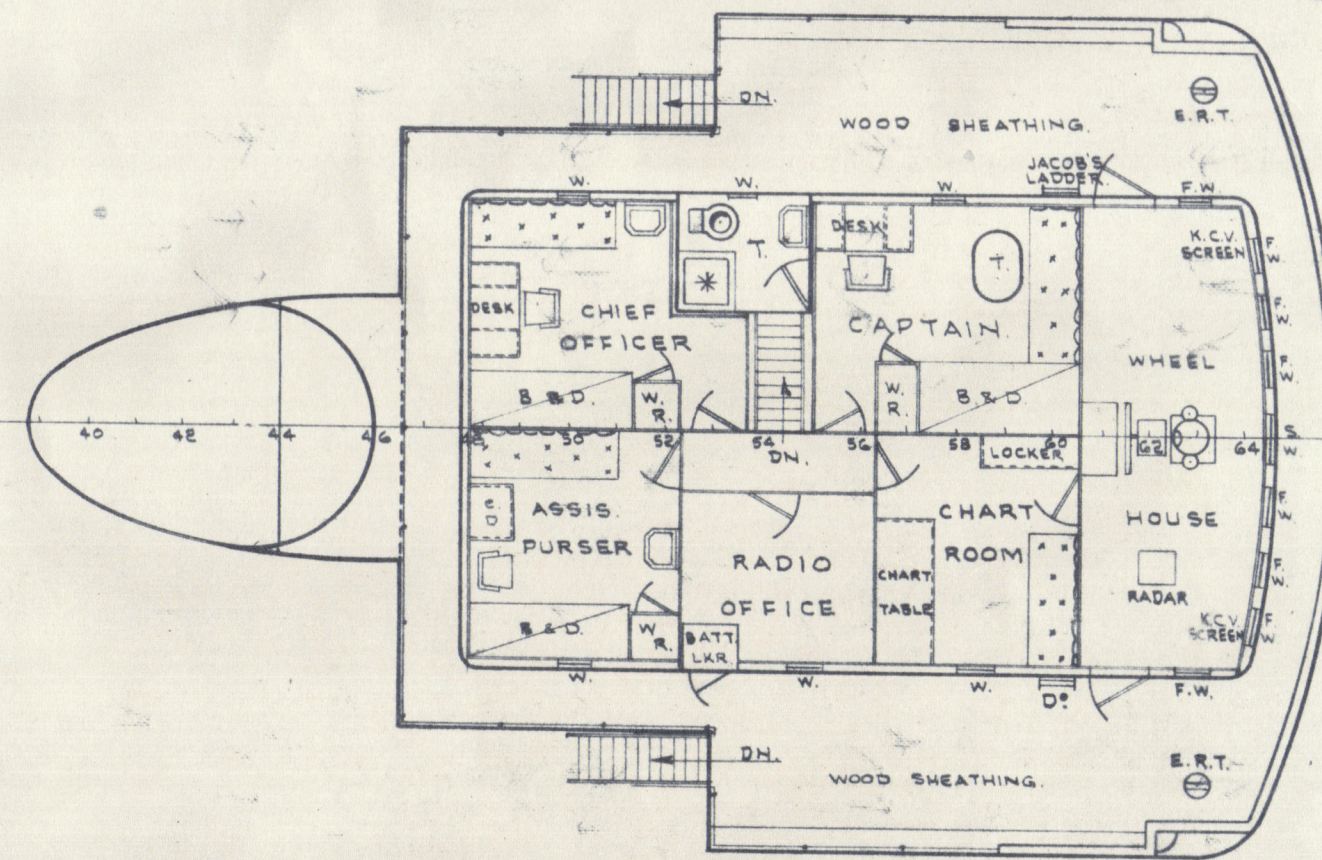


HOLD & TWEEN DECK CAPACITIES (APPROX)

COMPARTMENT	FRAMES	BALE CAPACITY
No.1 HOLD	72-96	7,320 cu ft
No.2 HOLD	60-72	5,860 "
No.3 HOLD	8-30	6,870 "
No.1 TWEEN DECK	72-82	3,050 "
No.2 TWEEN DECK	67-72	2,440 "
No.3 TWEEN DECK	15-22	3,300 "
REFRIGERATED CHAMBERS	22-30	2,520 "
TOTAL BALE CAPACITY		31,360 cu ft

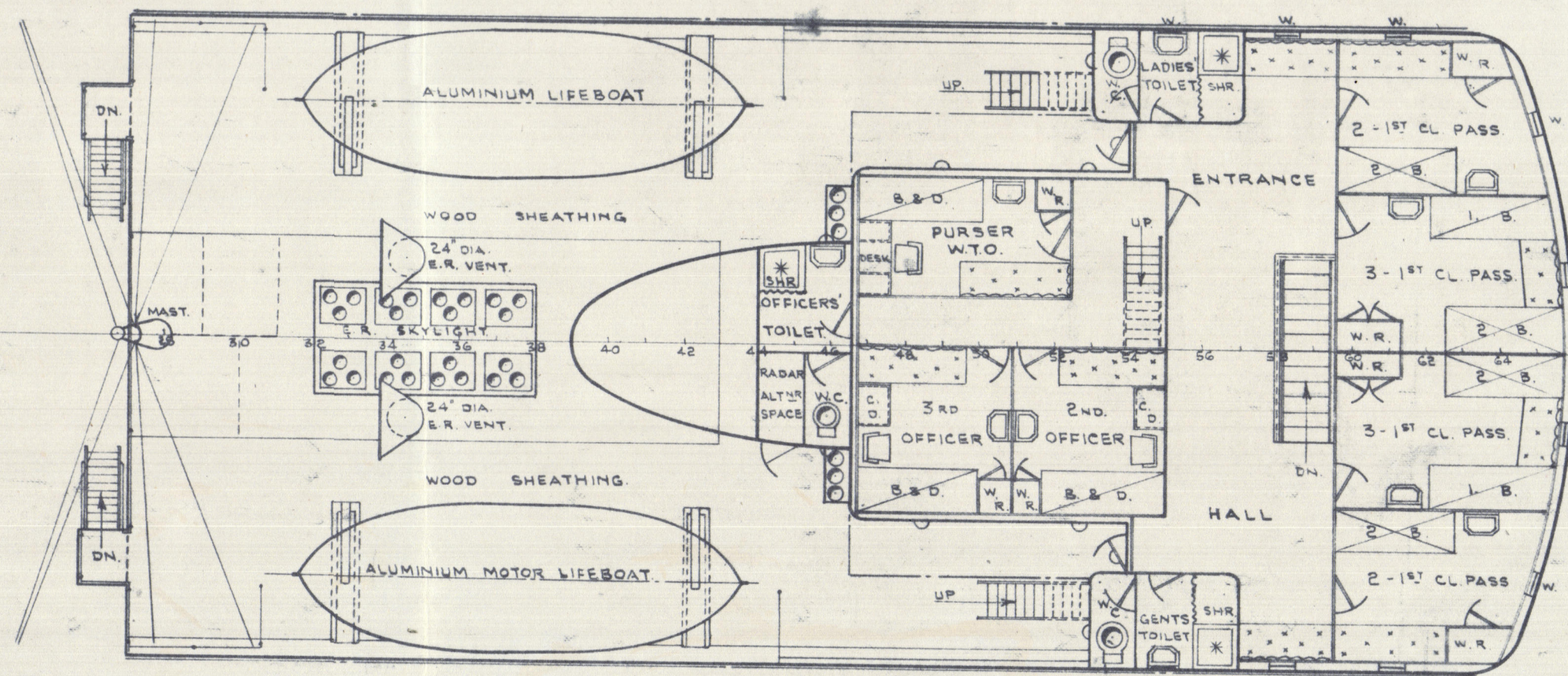
TANK CAPACITIES (APPROX)

COMPARTMENT	FRAMES	TONS W.B.	TONS F.W.	TONS O.F.
No.1 D.B. TANK	75-96	31		
No.2 D.B. TANK	61-72		41.5	
No.3 D.B. TANK	50-60			41
No.4 D.B. TANK	30-49		72.5	
No.5 D.B. TANK	15-30		28.5	
FORE PEAK TANK	96-FORD	26.5		
AFT PEAK TANK	0-10	31.2	30.4	
OIL FUEL BUNKERS	50-60			114
TOTALS		88.7	172.9	155

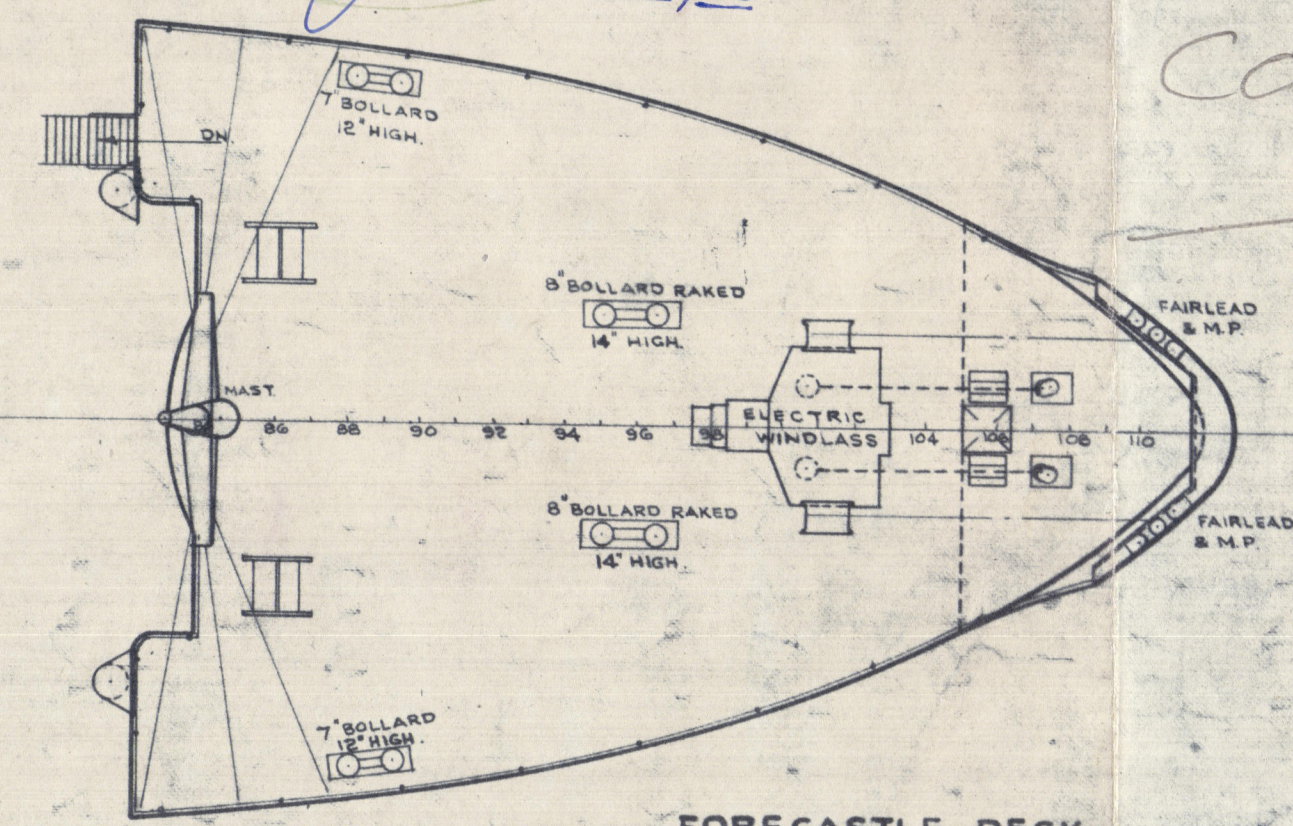


NAVIGATING BRIDGE

FIBRE GLASS INSULATION TO BE FITTED ON CEILINGS OF CABINS

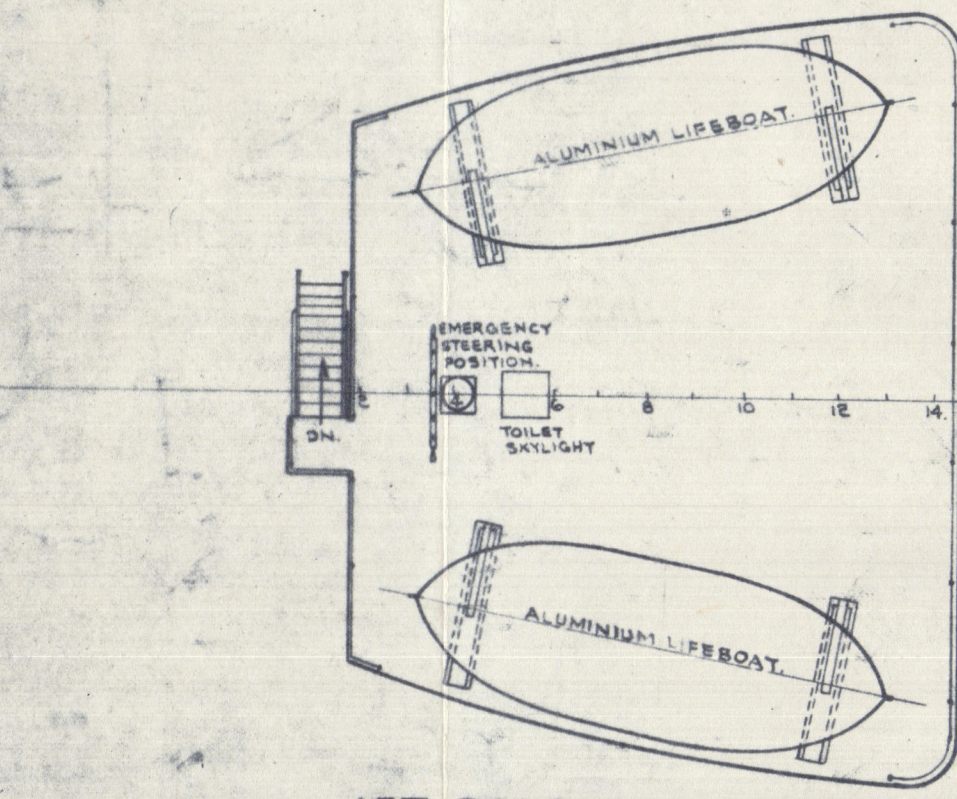


PROMENADE DECK



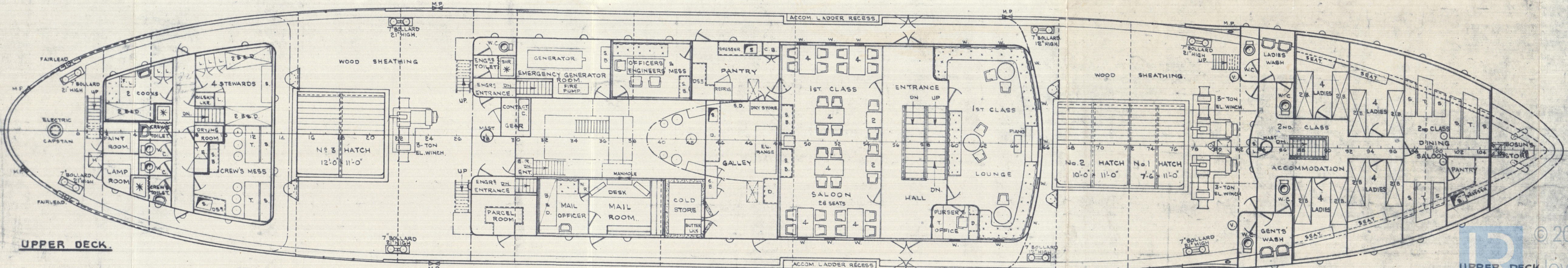
FORECASTLE DECK

FIBREGLASS INSULATION ON UNDER SIDE OF DECK



AFT BOAT DECK

FIBRE GLASS INSULATION ON UNDER SIDE OF DECK



UPPER DECK

M/M 9888

SHIPS Nos. 852-3

**GENERAL ARRANGEMENT OF
MOTOR PASSENGER AND CARGO VESSELS.**

DIMENSIONS:- 199'-0" L.B.P. x 35'-0" B.M. x 19'-6" D.M.

SCALE:- 1/8" = 1 FOOT

DRAWING No. 8/852-3.

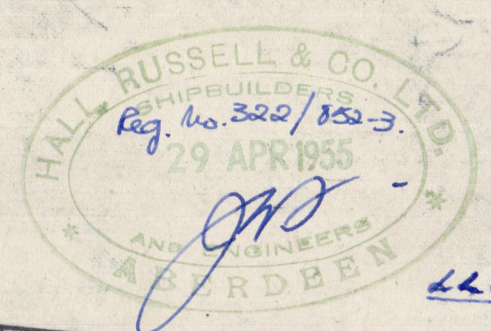
HALL, RUSSELL & Co. LTD.

SHIPBUILDERS & ENGINEERS

ABERDEEN.

AUGUST 1954.

SCOTLAND.



OFFICE COPY