

39 JUL 1947

Lloyd's Register of Shipping.

SURVEYS FOR FREEBOARD.

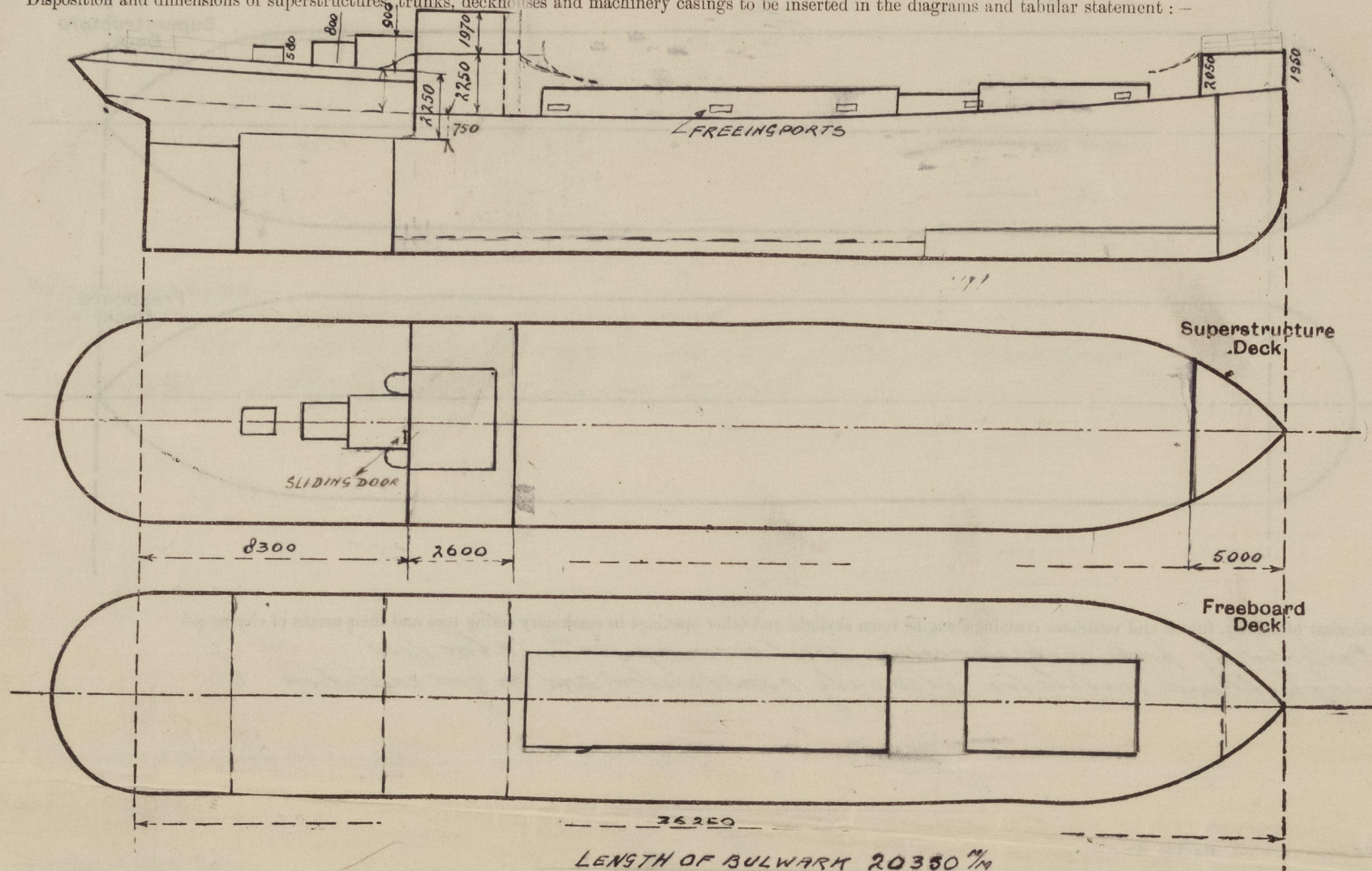
(CONDITIONS OF ASSIGNMENT.)

Index No. 39173
(For London Office only).Ship's Name *CONFID*Port of Survey *PAPENDRECHT*

Official Number

Surveyor's Signature *C. J. de Jong*Nationality and Port of Registry *DUTCH ROTTERDAM*Date of Survey *20th OF JUNE 1947*

Disposition and dimensions of superstructures, trunks, deckhouses and machinery casings to be inserted in the diagrams and tabular statement:—



Particulars of Superstructures, Trunks, Casings, Deckhouses.

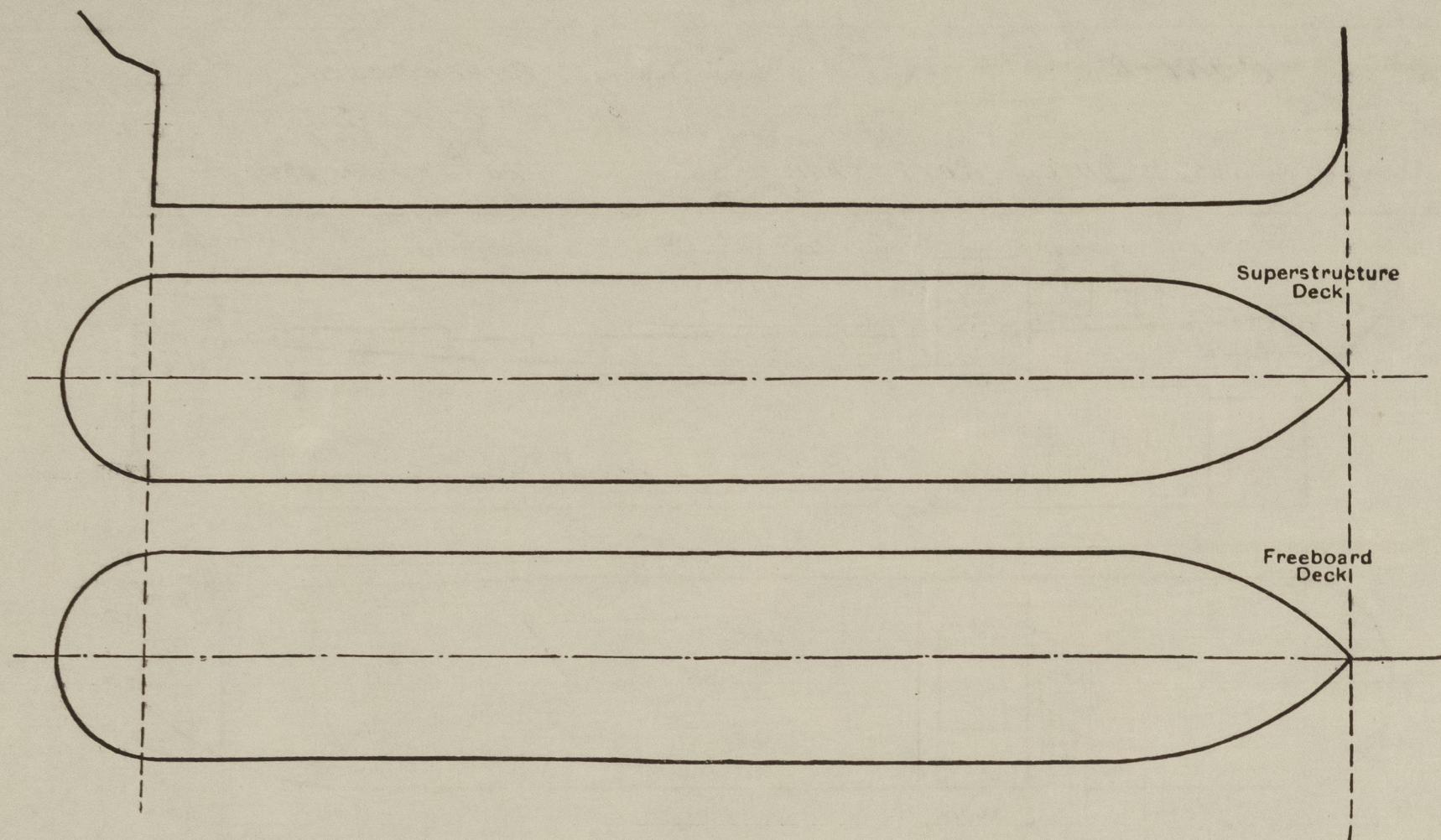
	Coaming	Plating	Stiffeners	Spacing	End Attachments of Stiffeners	Size of Openings	Height of Sills	Height of Casings
Poop Bulkhead	✓	6	4 75, 65, 7	650	✓	✓	✓	1500
Raised Quarter Deck Bulkhead ...								
Bridge, After Bulkhead								
Bridge, Forward Bulkhead								
Forecastle Bulkhead	✓	6 ✓	4 90, 60, 8	1100	✓	1500, 680	460	2050
Trunk, Aft	✓							
Trunk, Forward	✓							
Exposed Machinery Casings on Freeboard or Raised Quarter Decks ...	✓	6	FLAT BARS 75x10	680	✓	✓	✓	900
Exposed Machinery Casings on Superstructure Decks								
Machinery Casings within Superstructures not fitted with Class I Closing Appliances								
Deckhouses on Flush Deck Ships ...								

Particulars of Closing Appliances (state if capable of being manipulated from both sides).

Poop Bulkhead	No openings
Raised Quarter Deck Bulkhead ...	
Bridge, After Bulkhead	
Bridge, Forward Bulkhead	
Forecastle Bulkhead	One opening with steel door 1500x600 sill 460 mm. Operated from both sides
Exposed Machinery Casings on Freeboard or Raised Quarter Decks ...	
Exposed Machinery Casings on Superstructure Decks	
Machinery Casings within Superstructures not fitted with Class I Closing Appliances	
Deckhouses on Flush Deck Ships ...	

PARTICULARS OF PROTECTION TO OPENINGS, ETC.

The following diagrams should be used to indicate the positions of cargo and coaling hatchways, gangway, cargo and coaling ports, ventilators, companionways, etc., which would affect the seaworthiness of the ship:—



Particulars of fiddle, funnel and ventilator coamings, engine room skylight and other openings in machinery casing tops and their means of closing:—

Protected by pop motor casing steel coaming 900 mm above deck
skylight and ventilator strongly constructed and in good condition

Particulars of Flush Bunker Scuttles:—

none fitted

Particulars of Companionways:— On forecastle deck on steel hatch 1000 x 700 x 530 with one steel hinged cover
In wheelhouse on both sides 2 steel companionways 800 x 1800 with fixed wooden door 50 mm thick
giving access to crew quarters aft and motor room 90 mm steel

Particulars of Ventilators in exposed positions on freeboard and superstructure decks:—

On forecastle deck no ventilators
In well in way of no 1 hold one ventilator 200 mm g and 820 mm high
One ventilator on aft end no 2 hatch 200 mm g and 820 mm high
no ventilators on afterdeck

plugs and caps as usual provided

Particulars of Air Pipes in exposed positions on freeboard, raised quarter, or superstructure decks:—

One air pipe on port and starboard side for double bottom tank 1 1/2" dia 730 mm high
One air pipe on afterdeck 1 1/2" dia 450 mm high
Cover covers are ample!

Particulars of Gangway Cargo and Coaling Ports:—

Confid.

Particulars of Scuppers and Sanitary Discharge Pipes:—

freeboard deck in way of well discharged over deck 5 scuppers on both sides
W.C. pipes discharged through ship side provided with storm valves

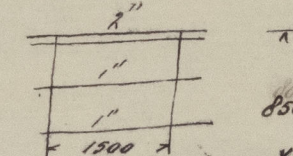
Particulars of Side Scuttles:—

no sidelights in spaces below freeboard deck
Side scuttles in spaces above freeboard deck are fitted with deadlights
permanently attached in their proper position

Vertical distance of Sill of lowest Side Scuttle above top of keel 2.95 m

Particulars of Guard Rails:—

On poop and forecastle deck open coil stanchions spaced 1500 mm
high 830 mm



Particulars of Gangways, Lifelines, etc.:—

Steel wire lifelines are available and fitted when necessary
from poop to forecastle deck.

Particulars of Freeing Arrangements.

	Length of Bulwark	Height of Bulwark	Size of Freeing Ports	Number each side	Area each side	Rule area each side
After Well ...	20350 mm	900	650 x 460	5	1 1/2 m ²	1.23 m ²
Forward Well ...						

State position of each freeing port ... After Well:— } 175 mm
(F. and A. position and height above deck edge) Forward Well:—

State whether the freeing ports are fitted with shutters, bars, or rails, and give particulars of such:— 2 bars 1" ✓

Additional area where sheer is less than standard.

PARTICULARS OF PROTECTION TO OPENINGS, ETC.

HATCHWAYS ON FREEBOARD AND SUPERSTRUCTURE DECKS.												
Description of Hatchway			No 1	No 2								
Dimensions of Hatchway			4770.4000	9540.4000								
COAMINGS	{	Height above Deck	770 ✓	770 ✓								
		Thickness {	Sides	7 ✓	7 ✓							
			Ends	7 ✓	7 ✓							
		Stiffeners	130.65.9	130.65.9								
Brackets, Stays			not more than 10 inches	not more than 10 inches								
HATCH BEAMS	{	Number	2	5								
		Spacing	1590	1590								
		Scantling and Sketch	7 1/2 x 90 x 75 x 9									
		Bearing Surface	90 ✓	90 ✓								
FORE AND AFTERS	{	Number										
		Spacing										
		Unsupported Lengths	none ✓									
		Scantling* and Sketch										
Bearing Surface			none									
HATCH COVERS	{	Material	WOOD ✓									
		Thickness	60 ✓									
		How fitted	LONG ✓									
		Bearing Surface	75 ✓									
Spacing of Cleats			500 ✓									
Number of Tarpaulins			2 ✓									
<p>*Are wood fore and afters steel shod at all bearing surfaces? ✓</p> <p>Are battens and wedges efficient and in good condition? YES ✓</p> <p>Are tarpaulins in good condition and in accordance with rule requirements? YES ✓</p> <p>Are lashings provided in accordance with rule requirements? YES ✓</p>												

Particulars of any special features:—

Endorsement at first survey and at surveys for renewal of Certificate:—

The fittings and appliances are in accordance with the particulars shown on this form (or as now modified) and are in good condition.



© 2021

Lloyd's Register Foundation