

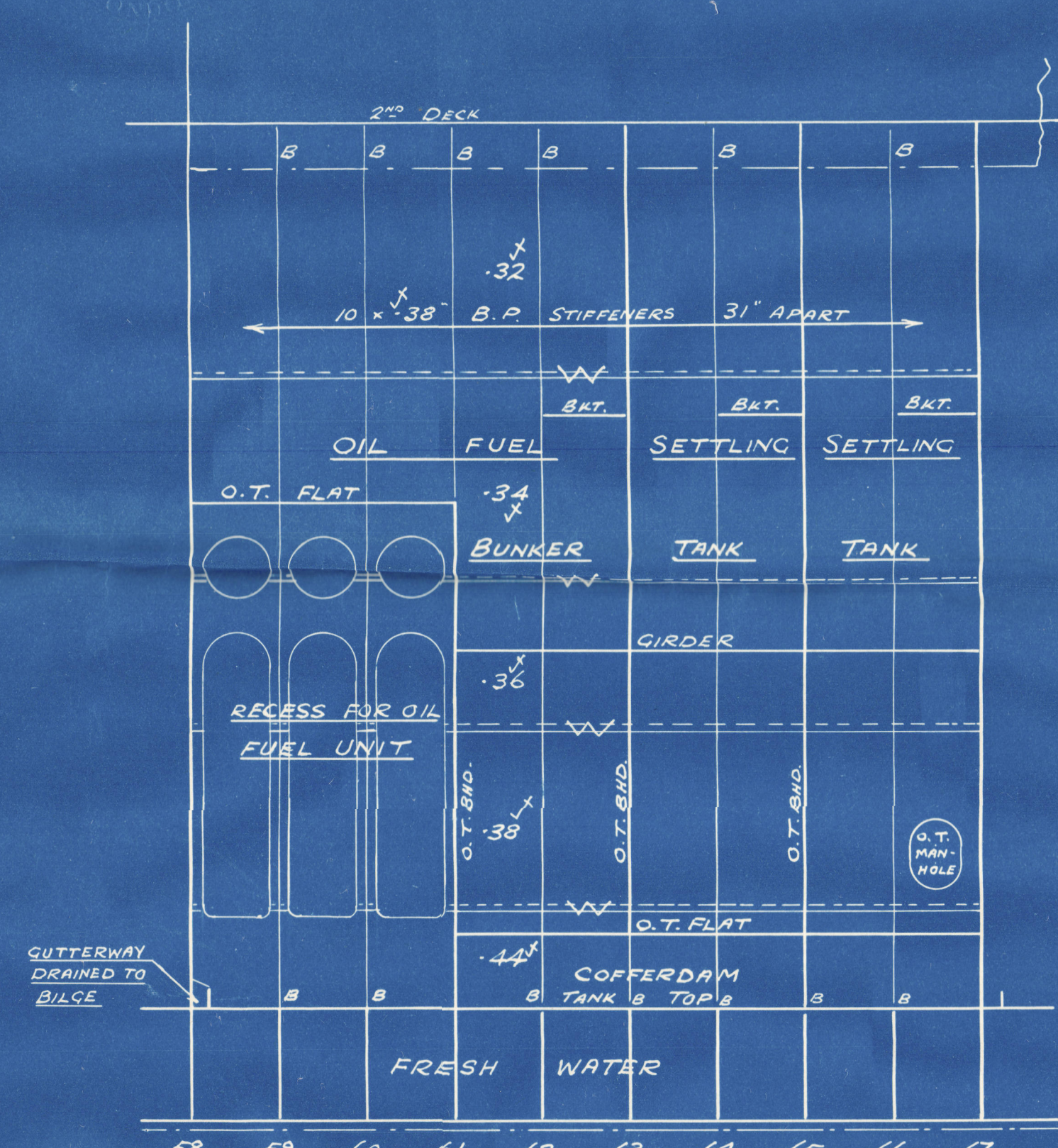
8 JUL 1942

S.S. "GRANDYKE"

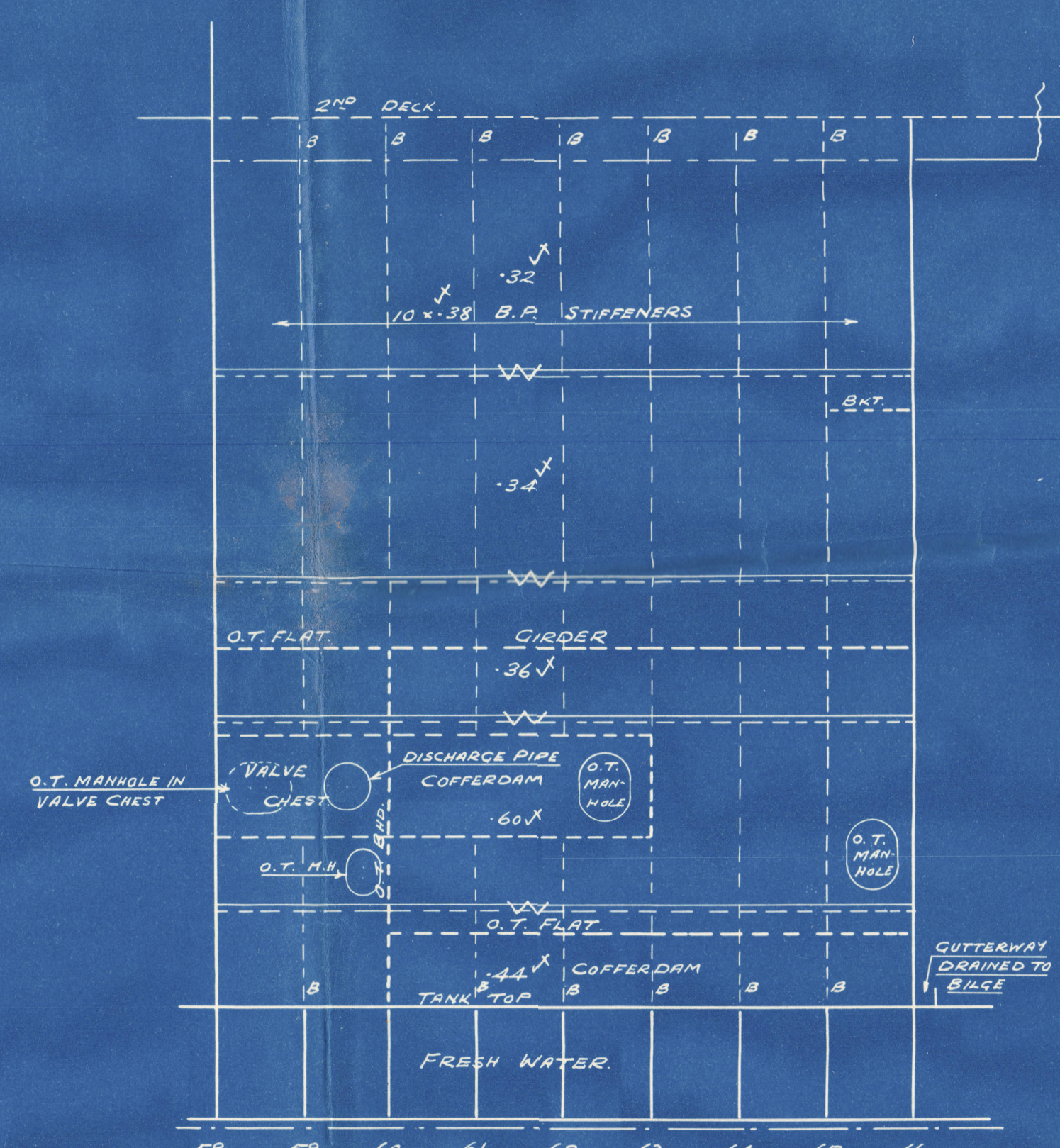
423'-10 1/2" B.P. x 56'-0" B.M.L. x 37'-9" D.M.L. TO U.D.
28'-8" D.M.L. TO 2ND Dk

OIL FUEL BUNKER AND SETTLING TANKS ABREAST ENGINE-ROOM

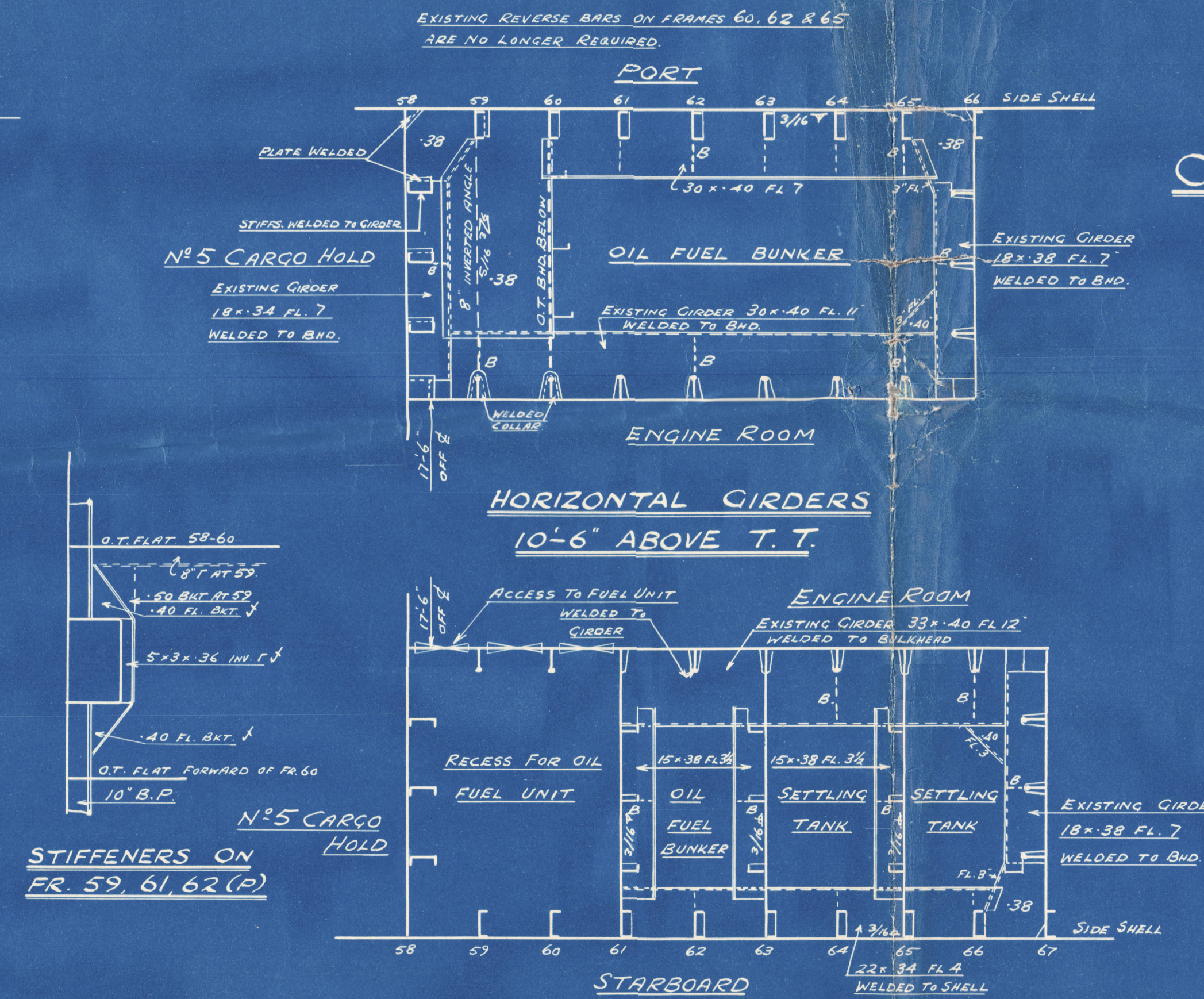
SCALE: 1/4" = 1 FOOT



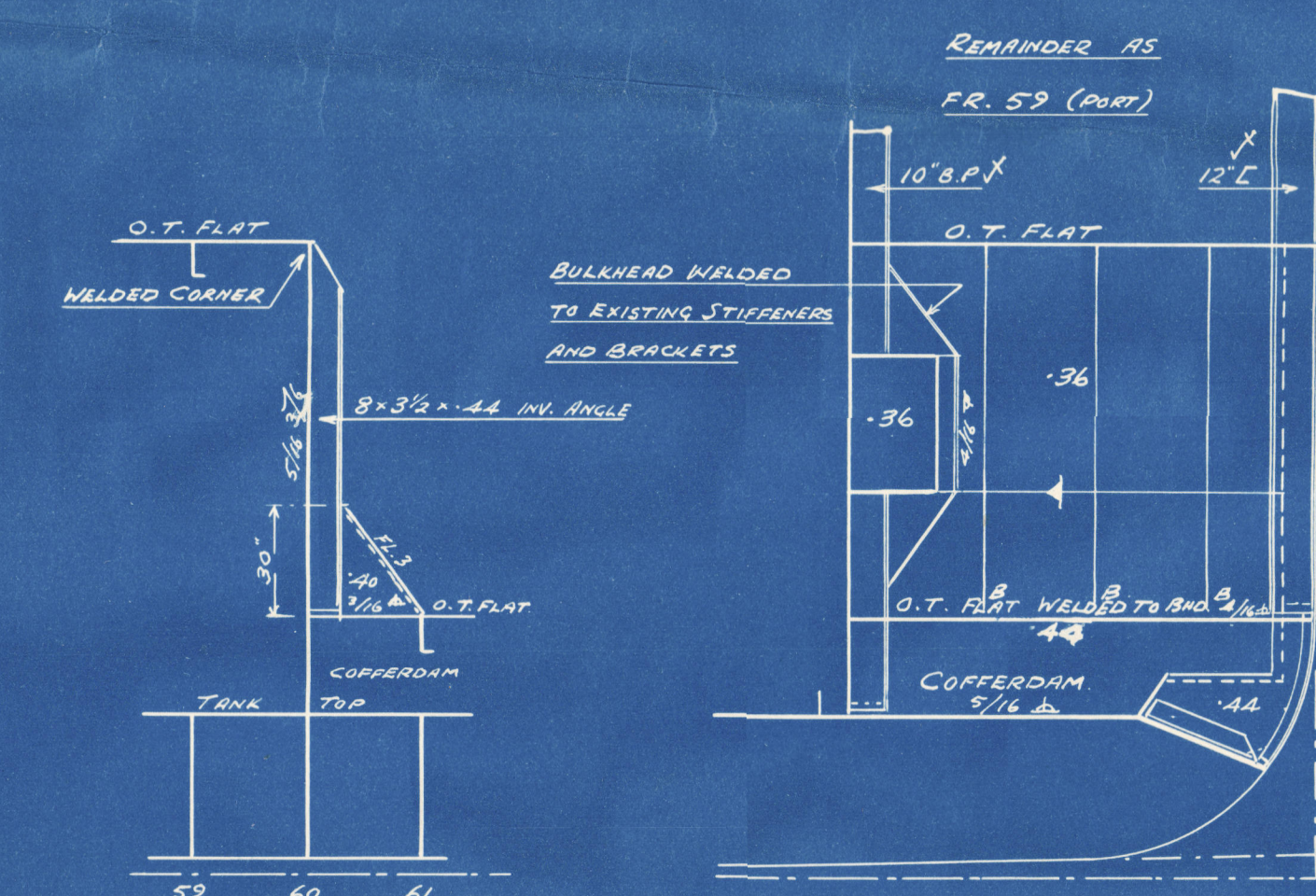
LONGITUDINAL BULKHEAD 17'-6" OFF C
STARBOARD SIDE (LOOKING INBOARD)



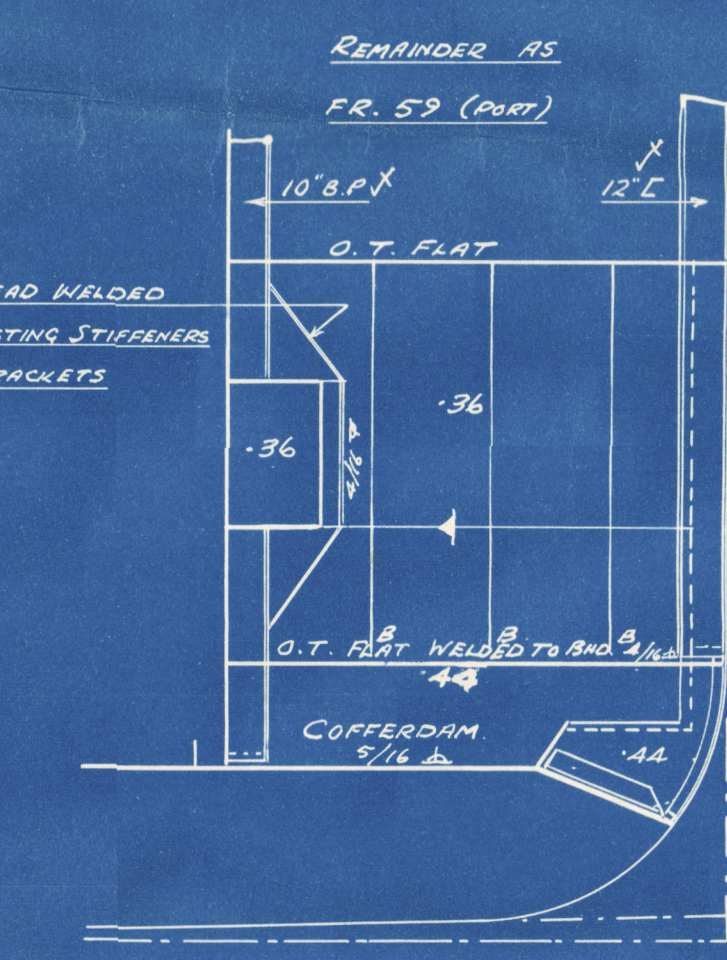
LONGITUDINAL BULKHEAD 17'-6" OFF C
(PORT SIDE LOOKING OUTBOARD)



HORIZONTAL GIRDERS
10'-6" ABOVE T.T.



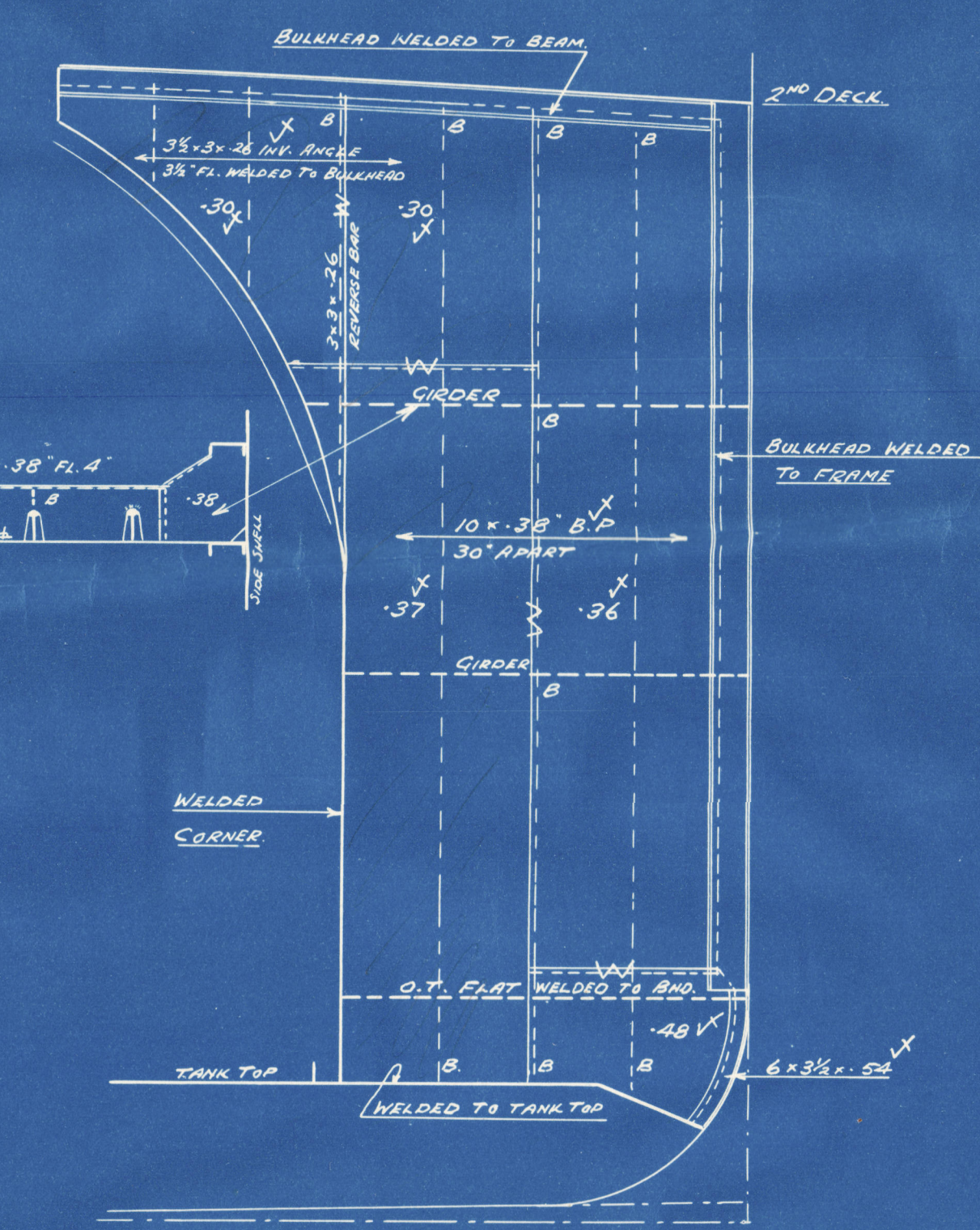
STIFFENERS ON BHD 60(P)



BULKHEAD FR 60 (P)



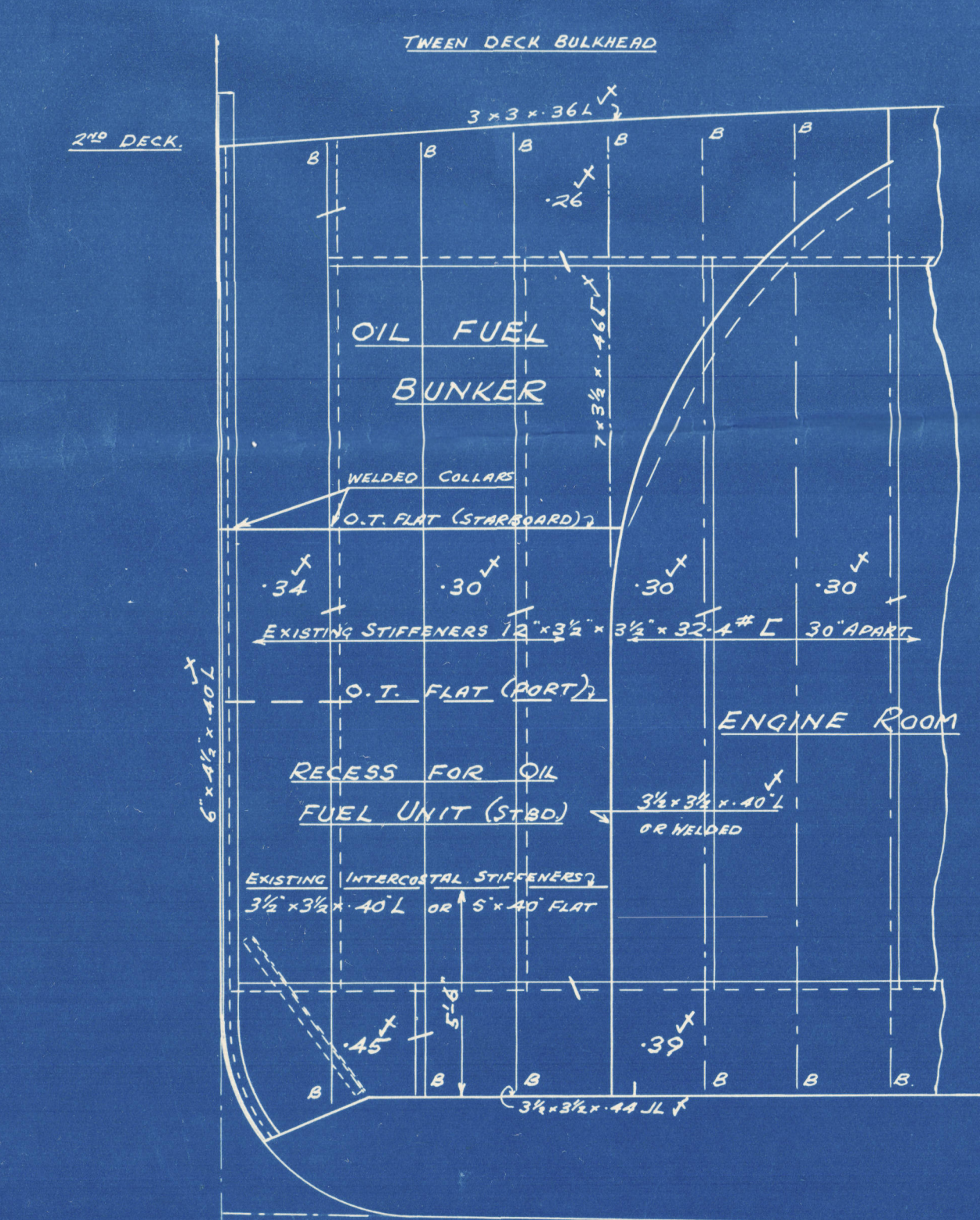
BULKHEAD STIFFENERS
ON FRs. 66 (P) 67 (S)



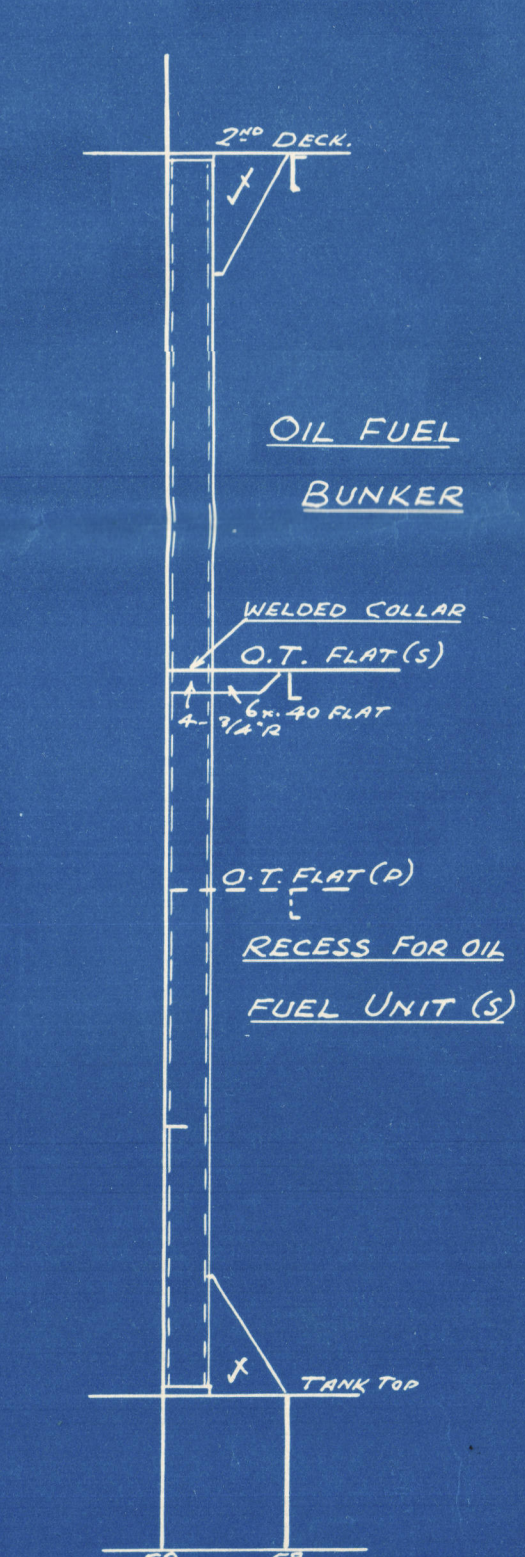
BULKHEAD ON FRs 66 (P) 67 (S)

NOTES: ALL SECTIONS DRAWN LOOKING AFT
EXISTING PLATING AND STIFFENERS MARKED THUS X
OVERFLOW 1'-6" ABOVE UPPER DECK.
SECTION 20 OF THE RULES TO BE COMPLIED WITH
FLASH POINT OF OIL FUEL TO EXCEED 150°F.

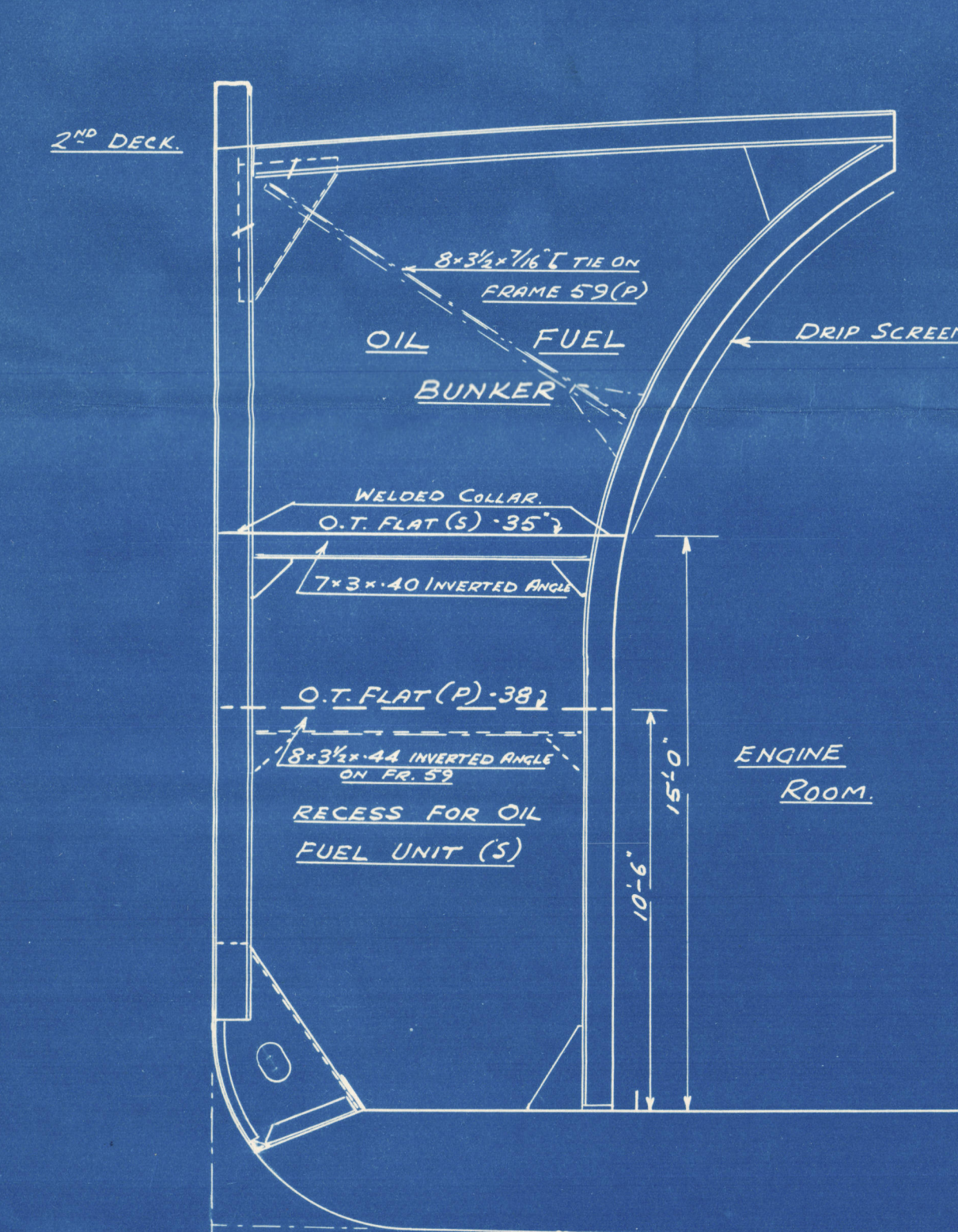
Existing marked boundary lines
to be reinforced by a light run
of welding.



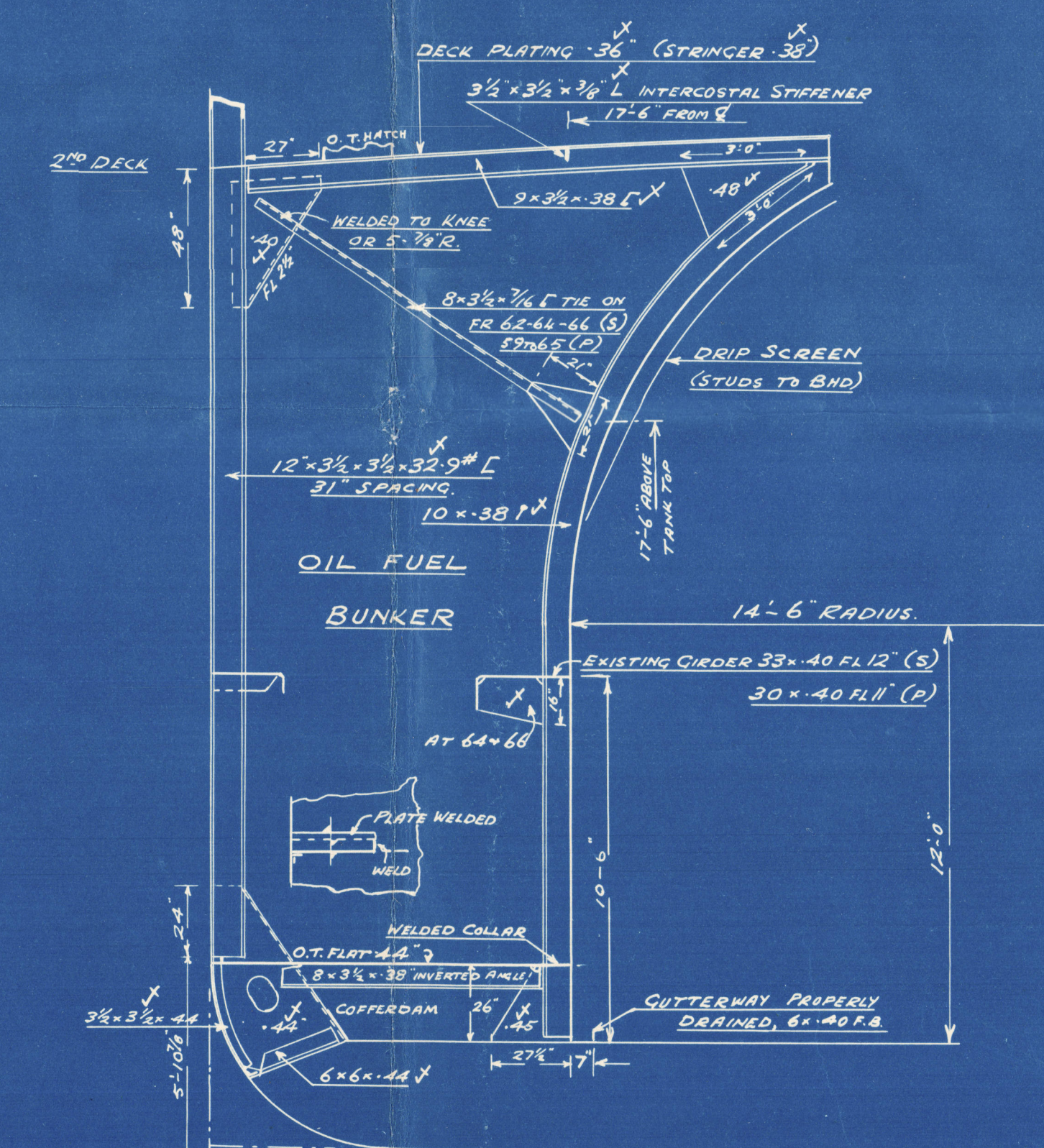
BULKHEAD AT FRAME 58
(DRAWN FOR STARBOARD - PORT SIMILAR)



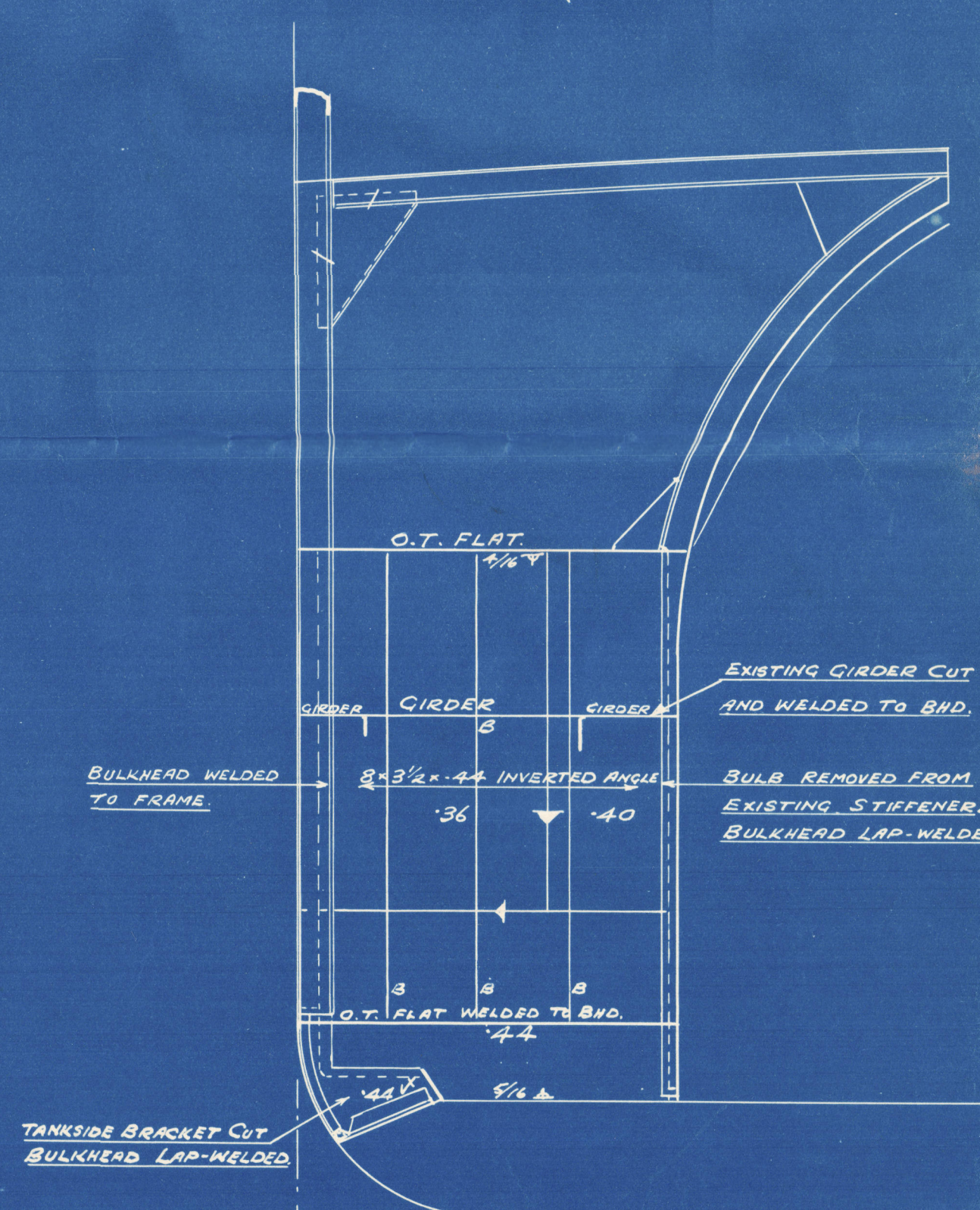
STIFFENERS ON BHD 58



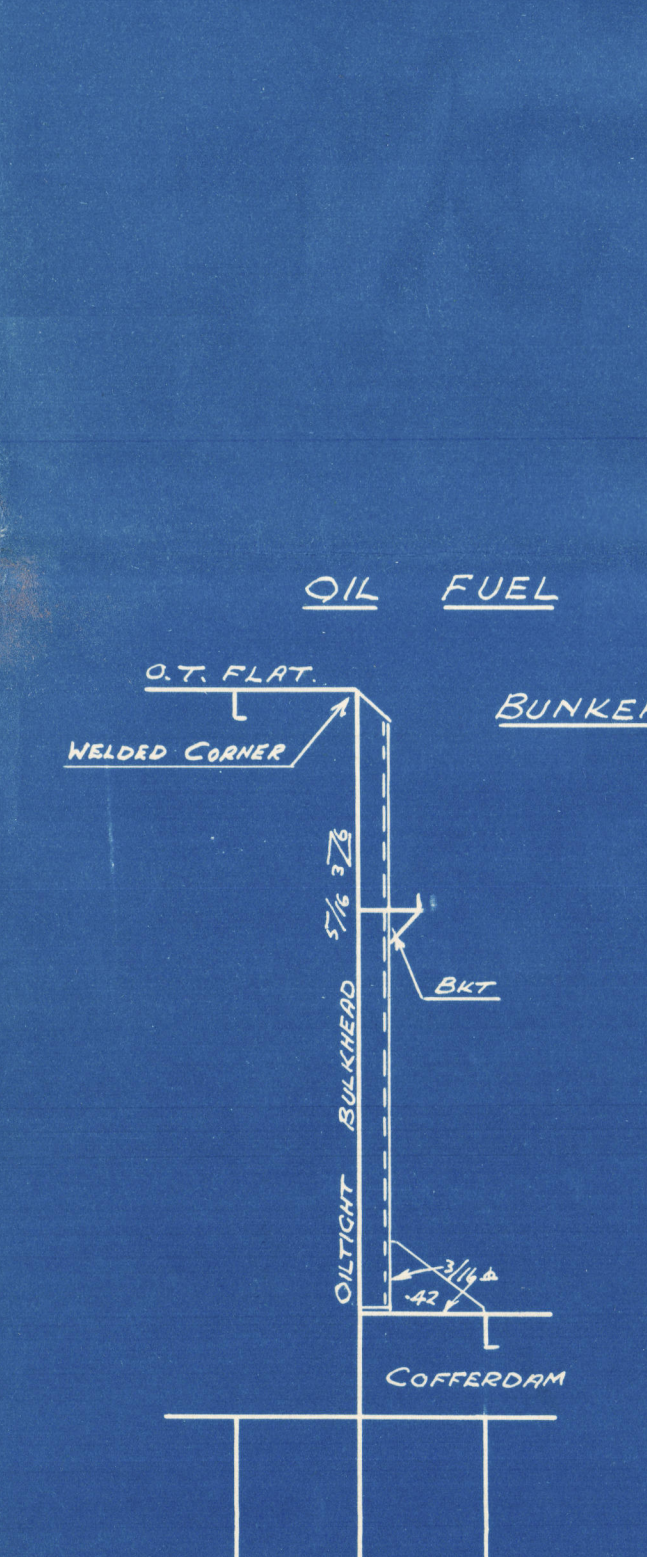
FRAMES Nos 59 & 60 (S)
(S9 (P) SIMILAR)



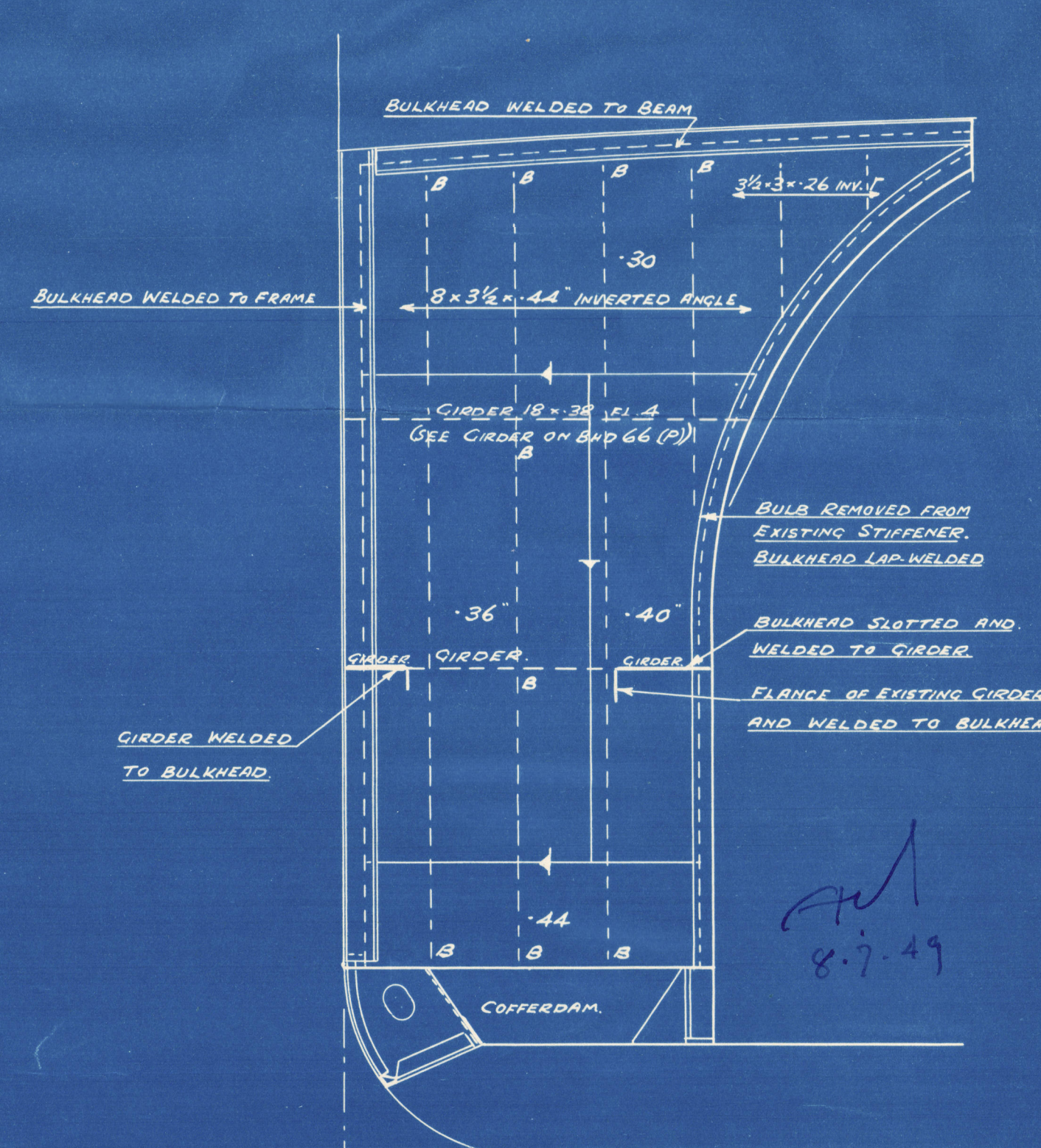
FRAMES 62, 64 & 66 (S)
61 TO 65 (P) SIMILAR



BULKHEAD ON FRAME 61 (S)



STIFFENERS ON BHD 61 (S)



BULKHEAD ON FR 63 & 65 (S)

28/5/42

S.S. Grandyke.
N.W. Benannock.

Oil fed Bunker and Settling
Tanks abreast Engine Room

Nuc. 106 975.

GRANDYKE

009896-009903-0307



© 2021

Lloyd's Register
Foundation