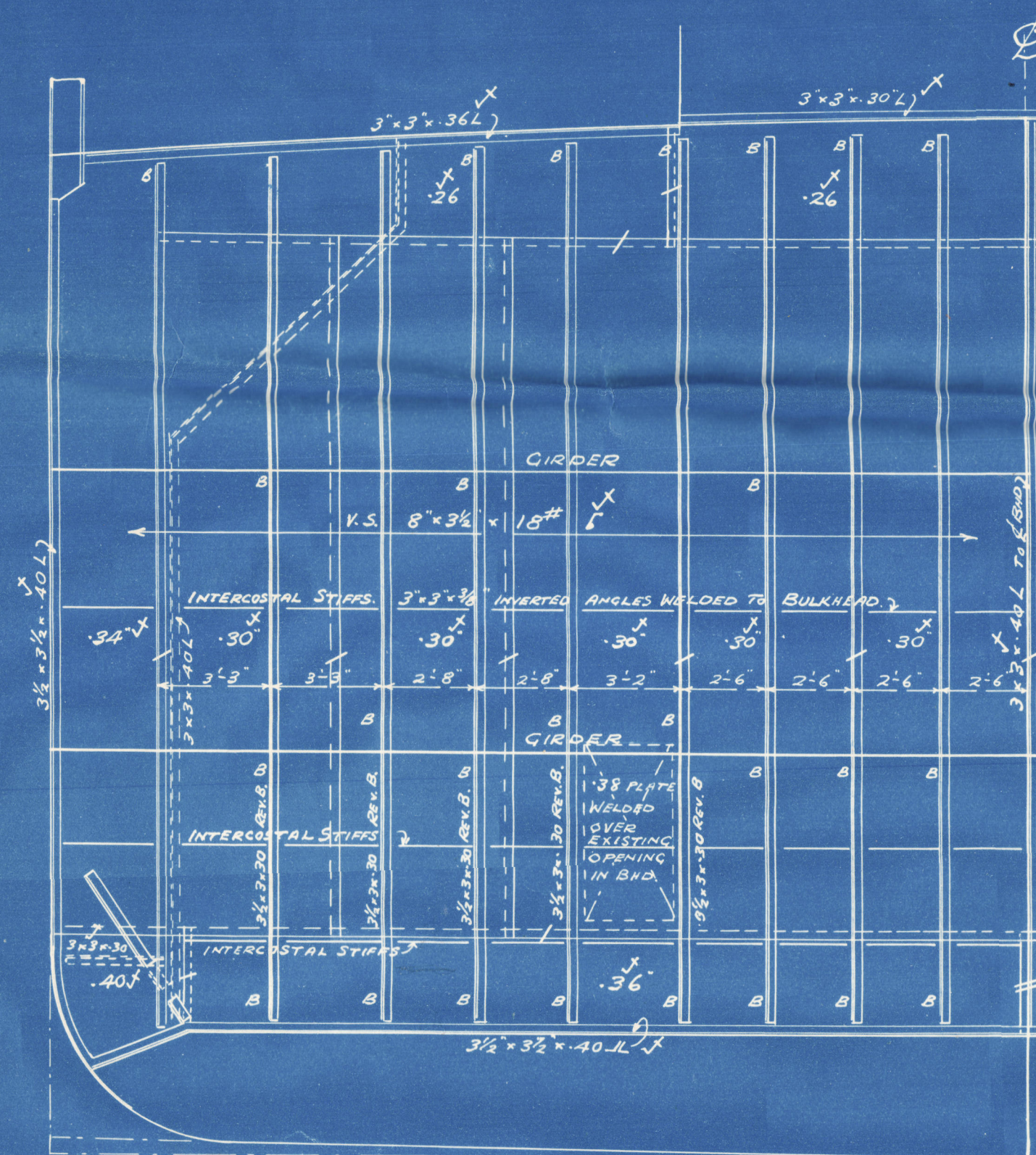
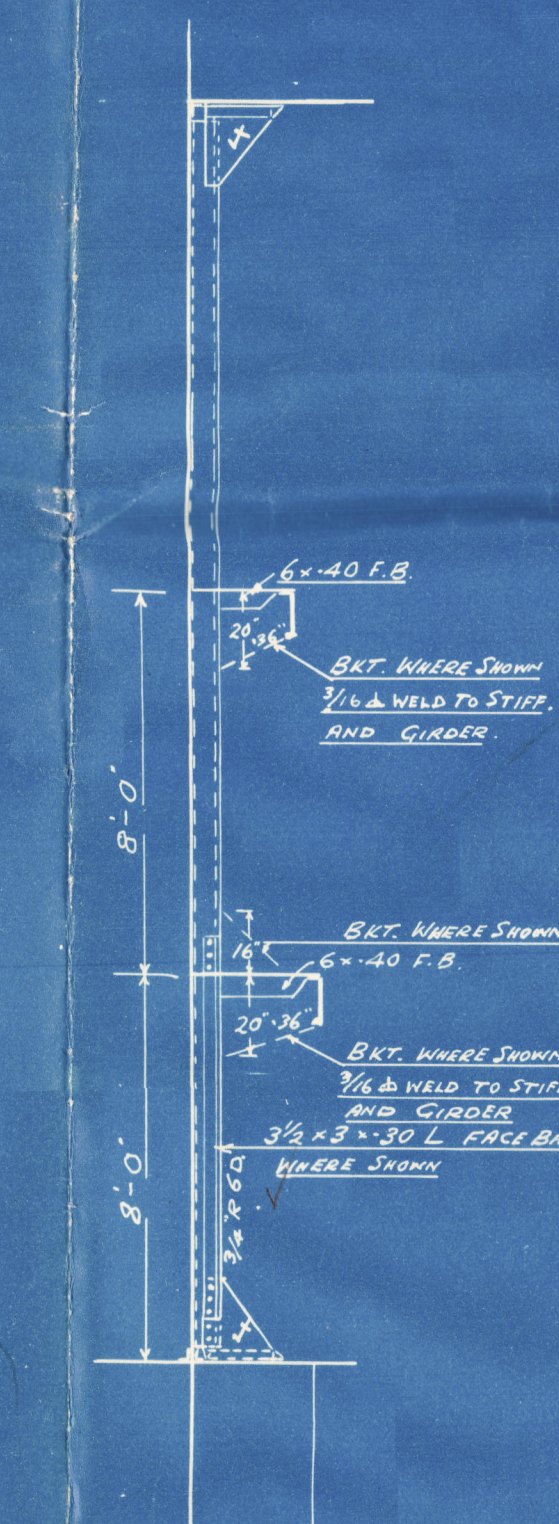


S.S. "GRANDYKE"  
 423'-10 1/2" B.P. x 56'-0" B.M.L.D. x 37'-9" D.M.L.D. TO UPPER DECK  
 28'-8" D.M.L.D. TO 2ND DECK  
 MIDSHIP OIL FUEL BUNKER  
 SCALE: 1/4" = 1 FOOT

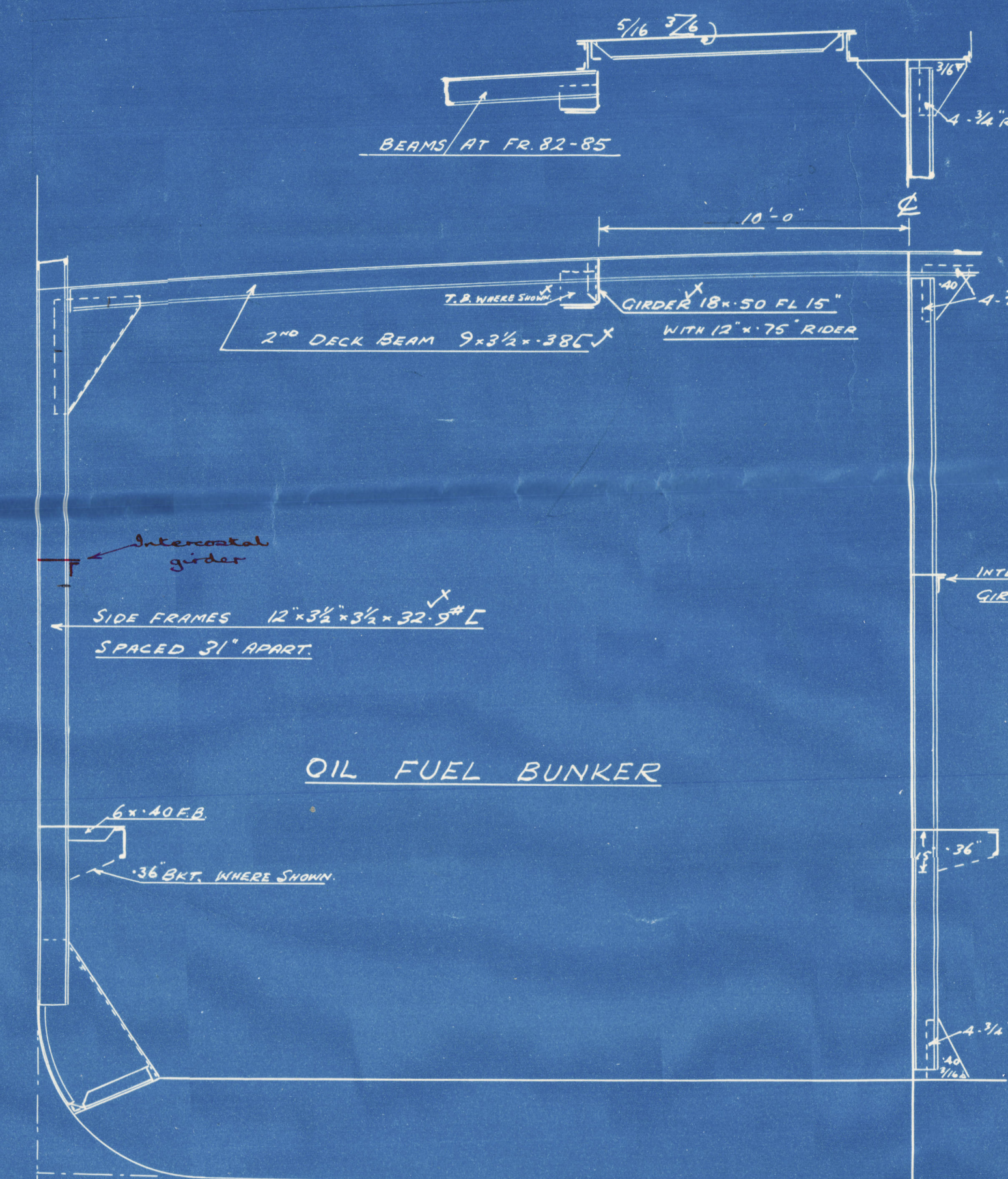
NOTES: ALL SECTIONS ARE DRAWN LOOKING ACT  
 EXISTING STIFFENERS AND PLATING ARE MARKED THUS ✓  
 OVERFLOW 1'-6" ABOVE UPPER DECK  
 SECTION 20 OF THE RULES TO BE COMPLIED WITH  
 FLASH POINT OF OIL FUEL TO EXCEED 150°F



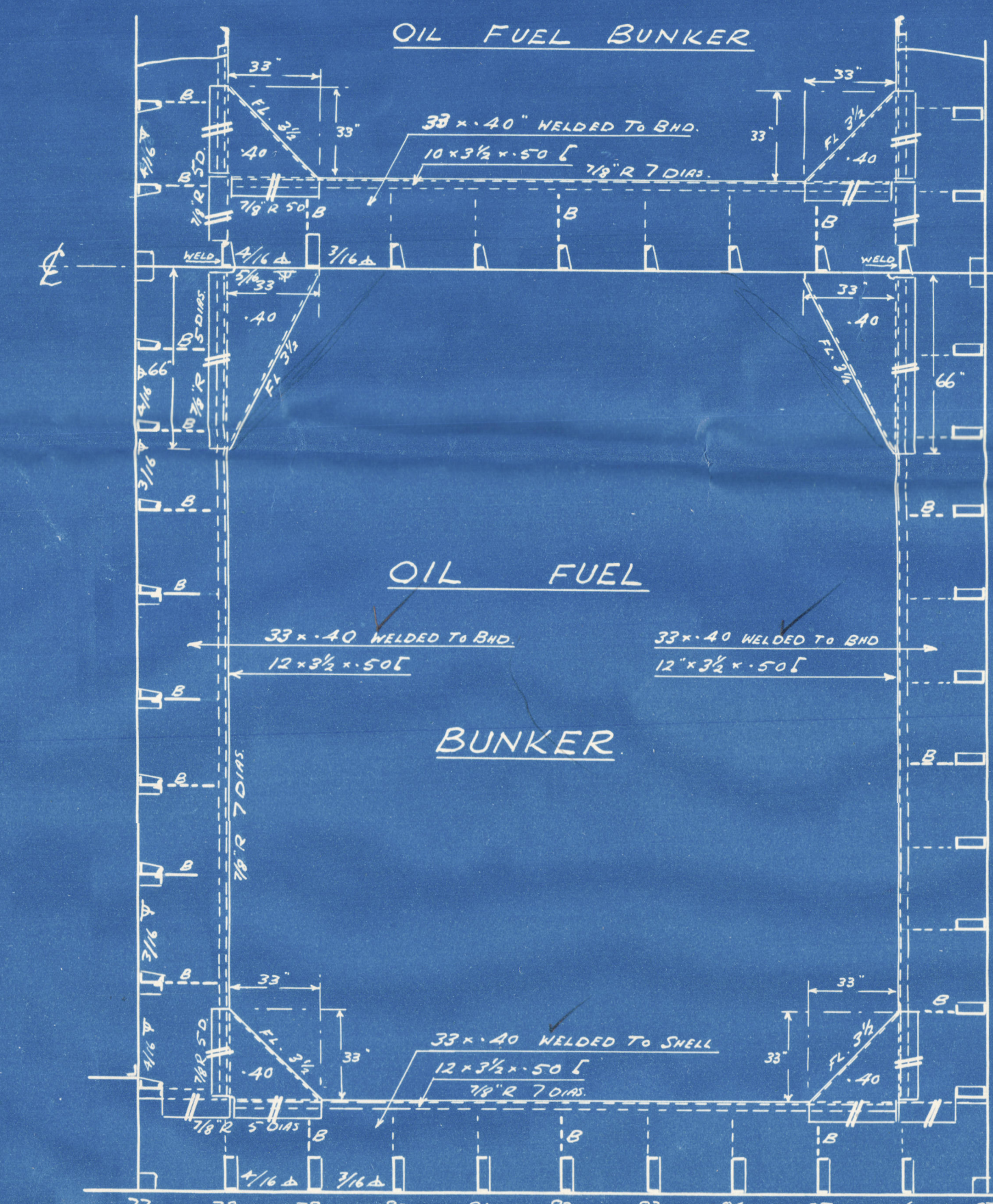
No 77 BULKHEAD



STIFFENERS ON  
No 77 BULKHEAD

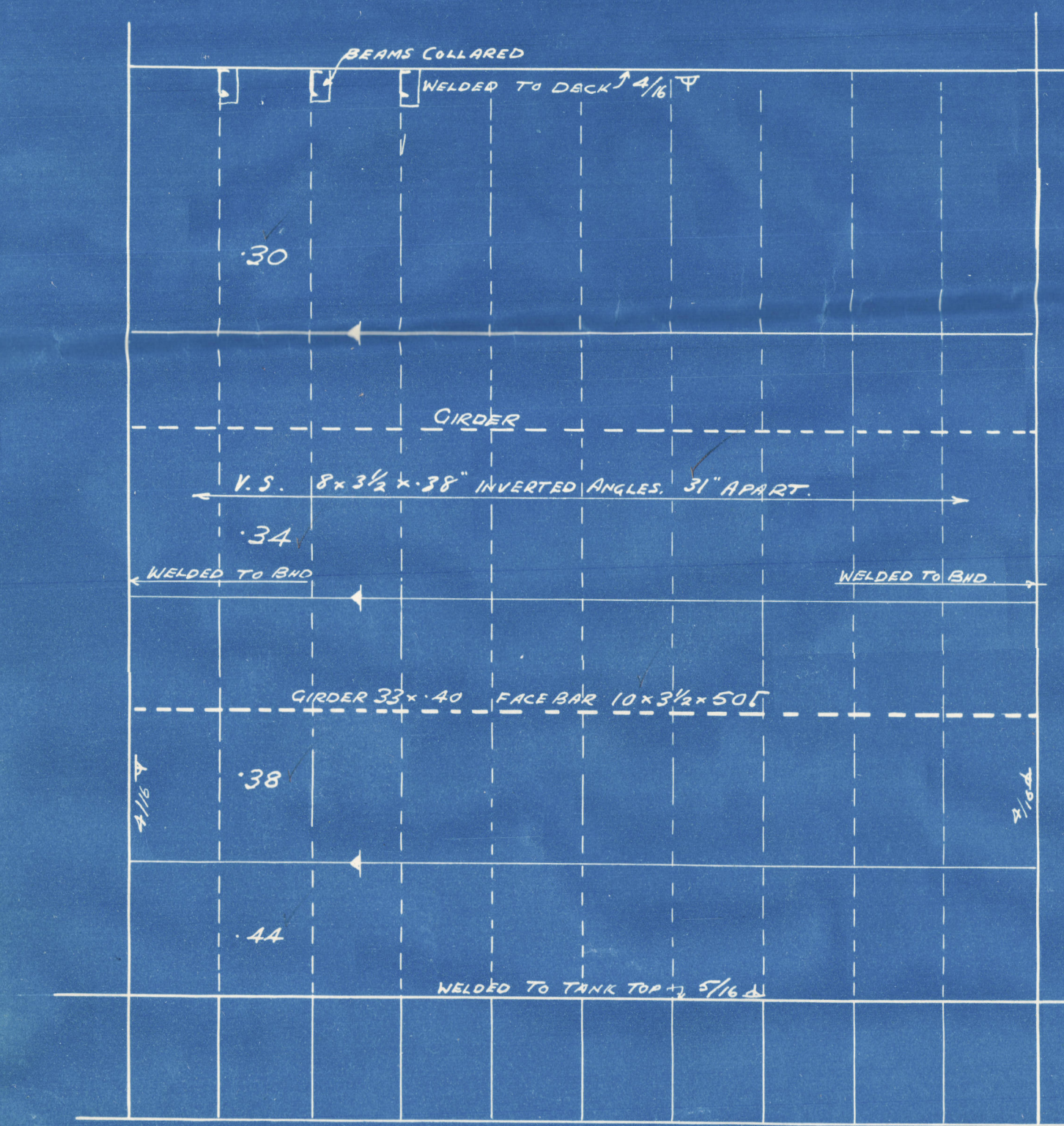


INTERMEDIATE FRAMES No 78 TO 86

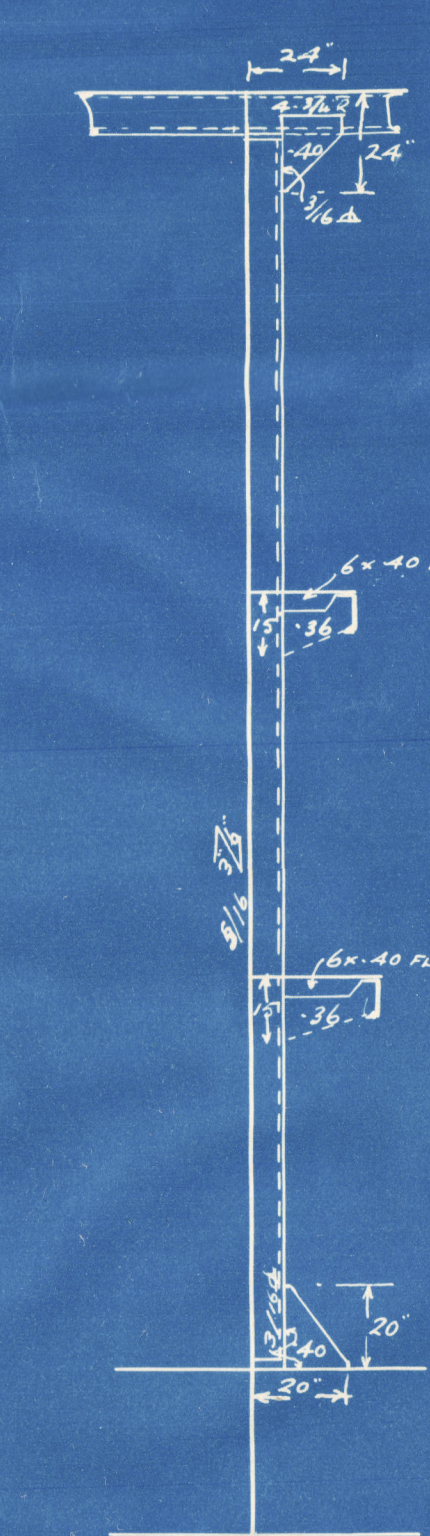


PLAN VIEW OF LOWER GIRDERS 8FT ABOVE TANK TOP

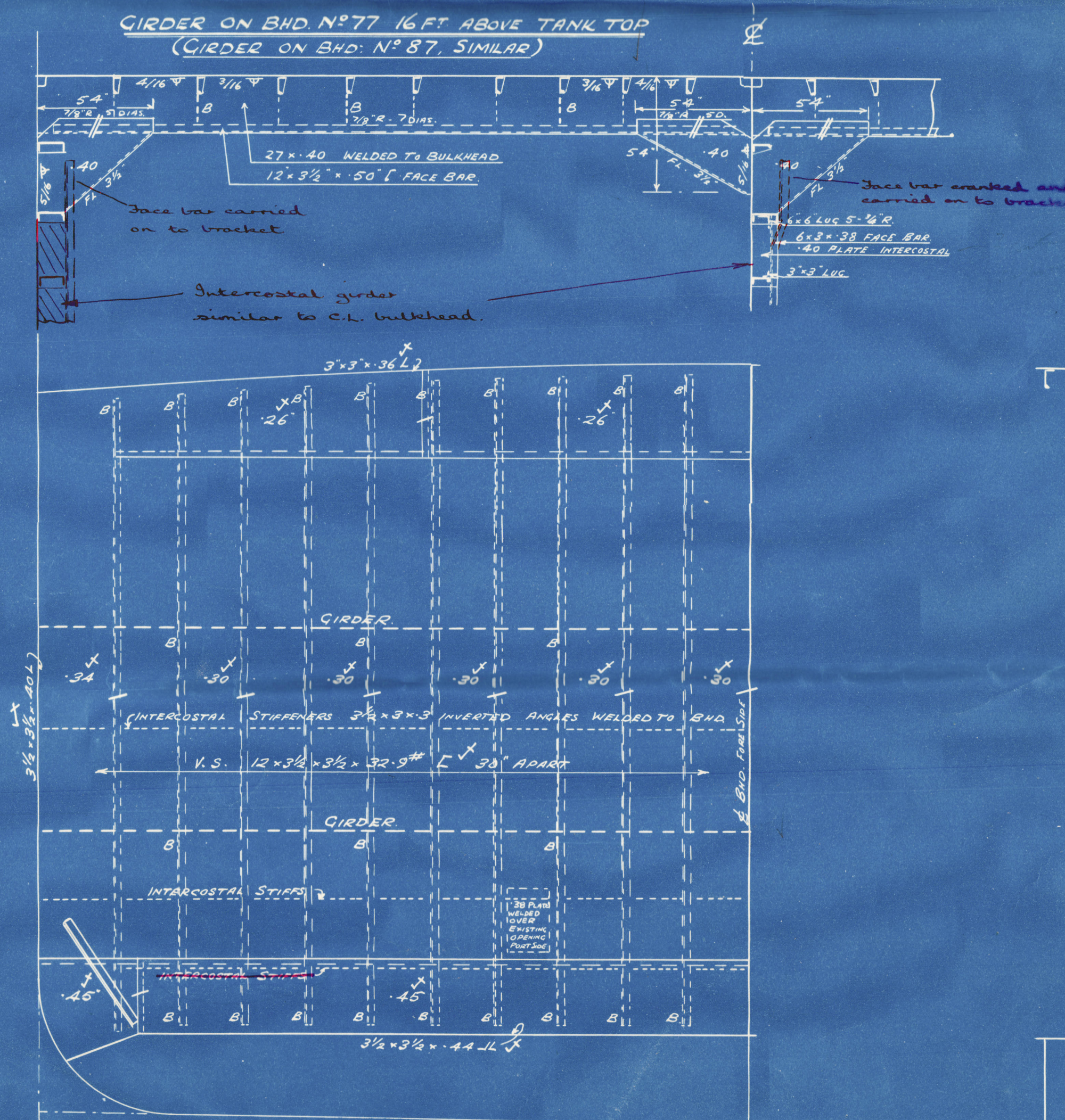
ALTERNATIVE ARRANGEMENT WITH OILTIGHT BULKHEAD



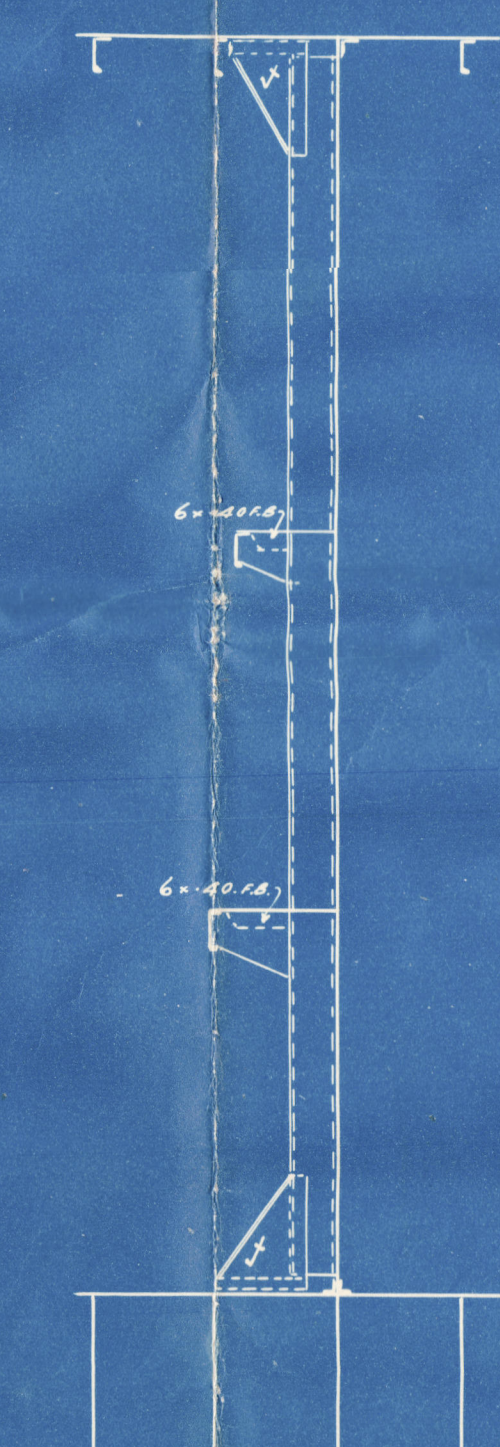
CENTRE-LINE BULKHEAD



STIFFENERS ON

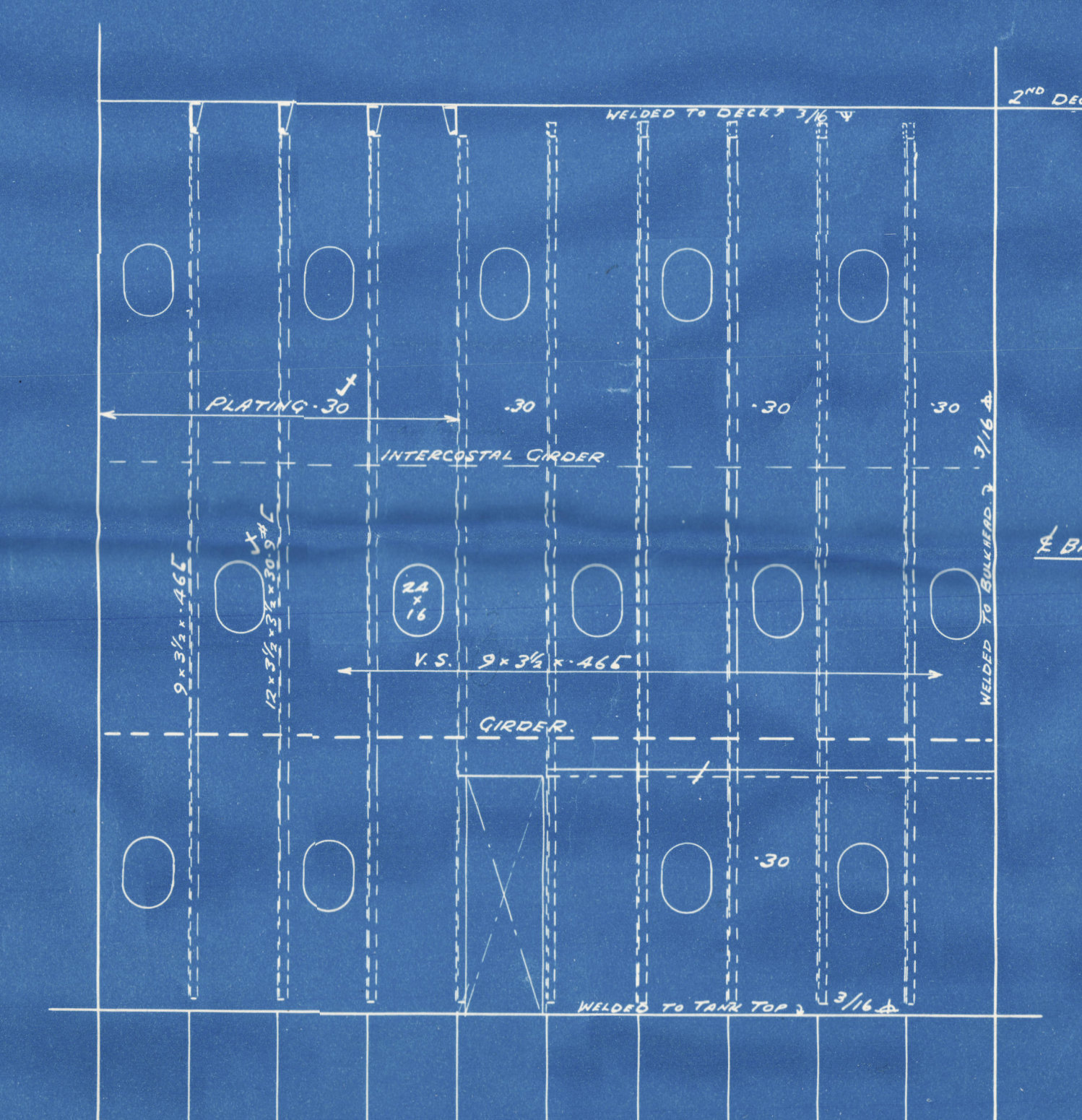


No 87 BULKHEAD

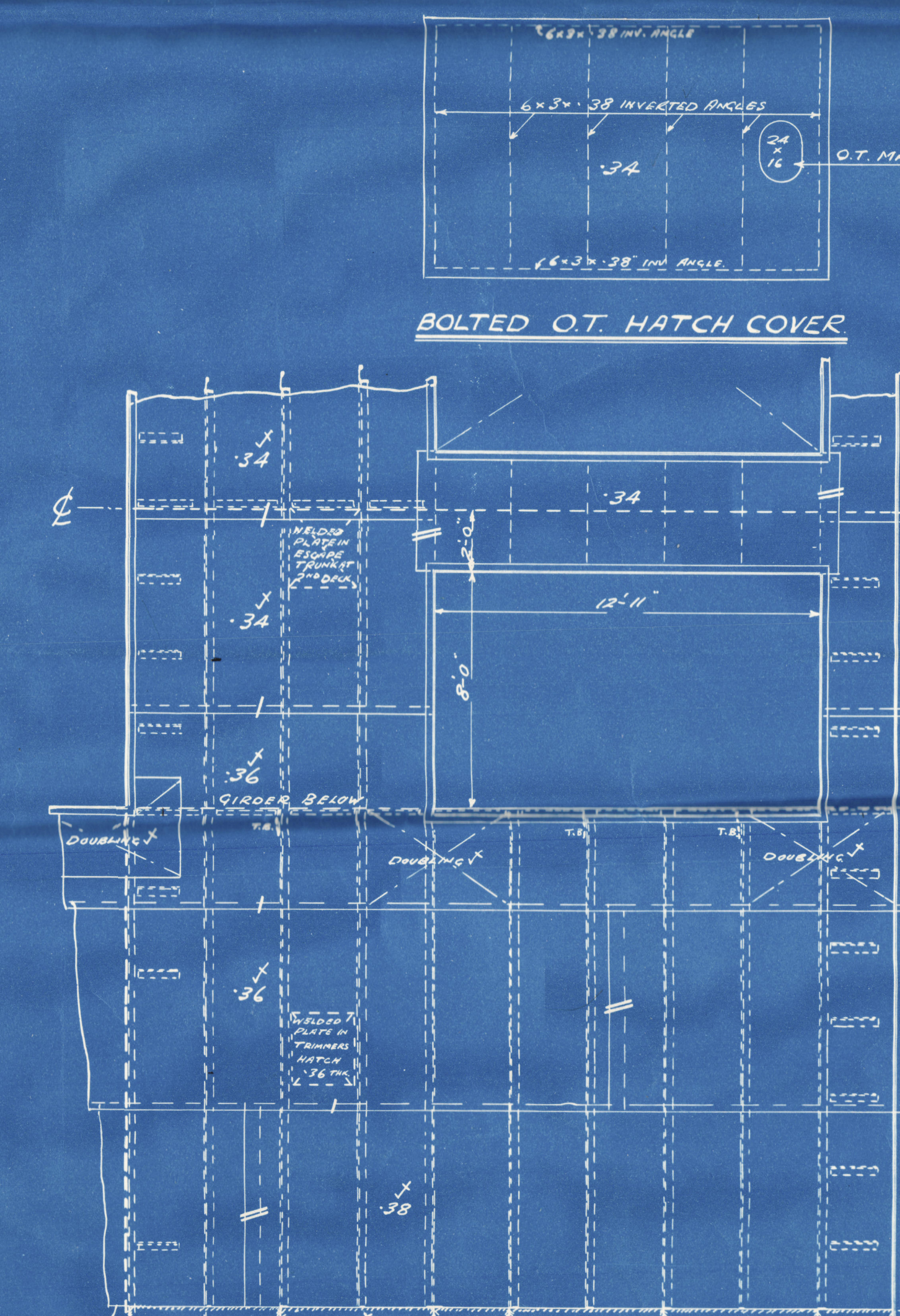


STIFFENERS ON  
No 87 BULKHEAD

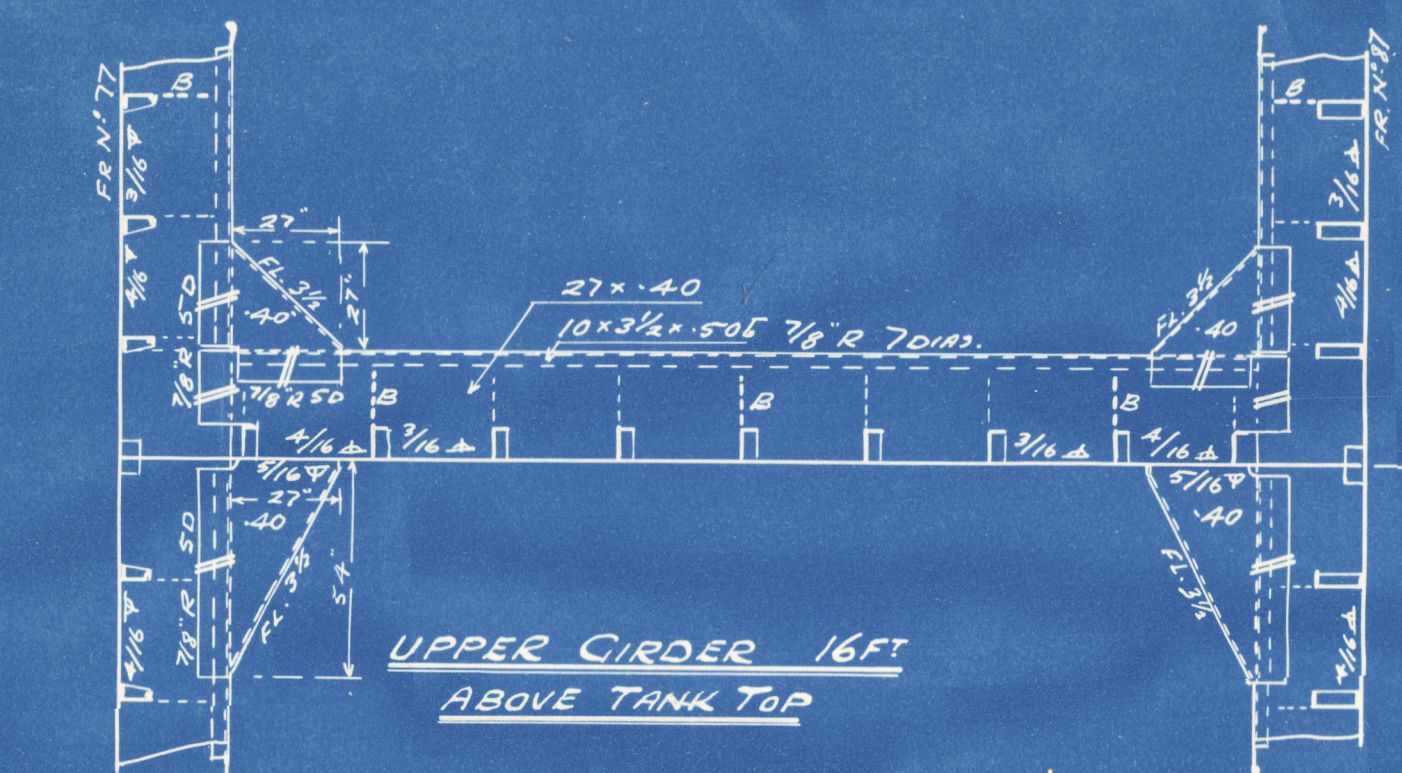
SEE MIDSHIP SECTION FOR DETAILS OF EXISTING STRUCTURE NOT SHOWN



PERFORATED CENTRE-LINE BULKHEAD  
(SEE ALTERNATIVE)



PLAN VIEW OF UPPER DECK



UPPER GIRDER 16FT  
ABOVE TANK TOP

Existing Rivets Bowsing Bars &  
 Reinforced by a light run  
 of welding.  
 Existing Rivets Bowsing Bars &  
 Reinforced by a light  
 run of welding.



"BENVANNOCH"

ex "Grandyke"

Midship oil fuel

bunker

Nwc 106 975.



© 2021

Lloyd's Register  
Foundation

009896-009903-0308