

PAID INSURE BY THE
AUG 31 1928
GREENSBORO, N.C.

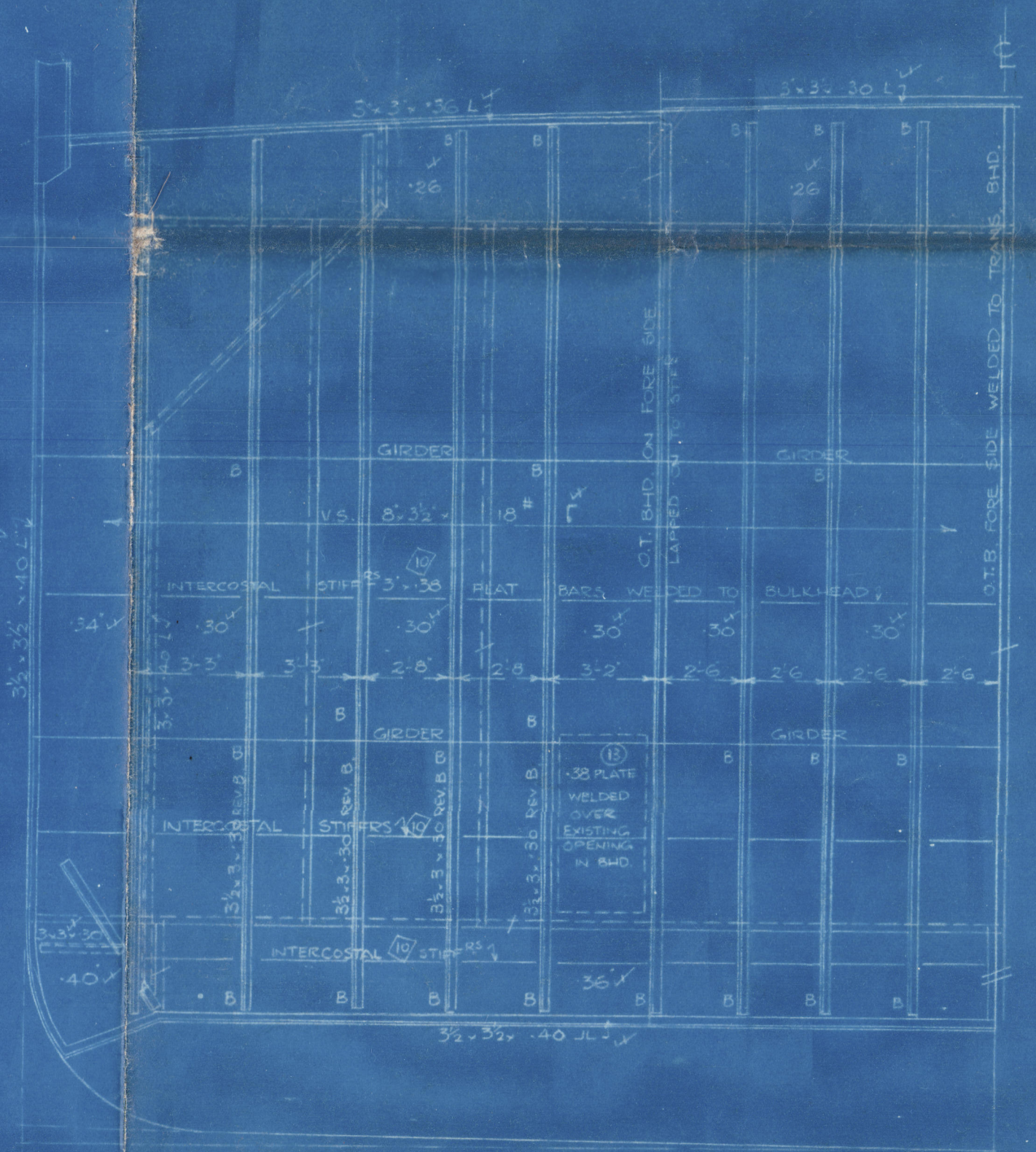
NO SEP 1928

S.S. "GRANDYKE" 425-10 1/2 B.P. 56'0" P.M.F. 37'9" D.M.F. UPPER DECK
NO. 8 SECOND

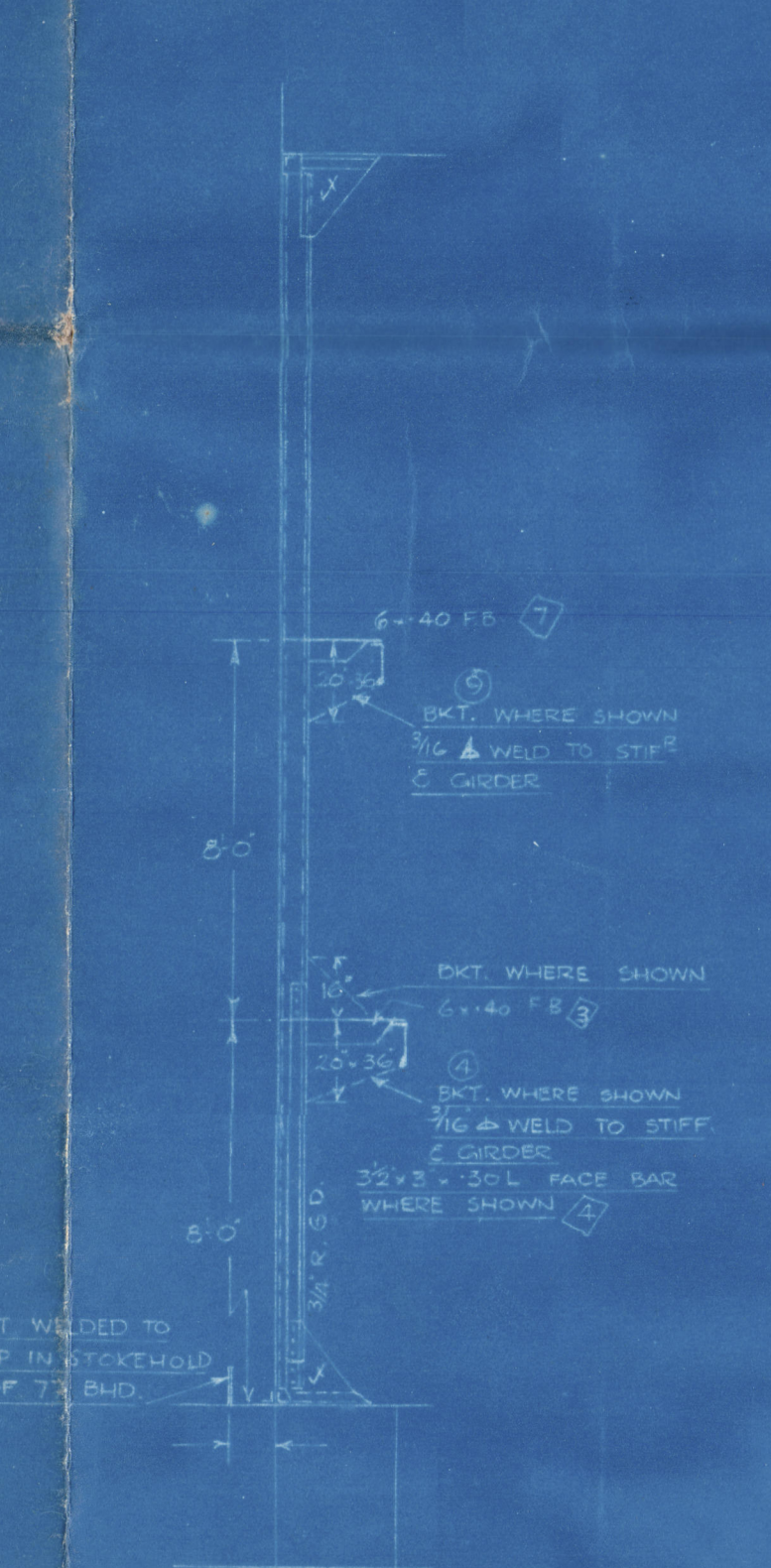
O.F. BUNKERS & SETTLING TANKS.

SCALE 1/4" = 1 FOOT & AS SHOWN

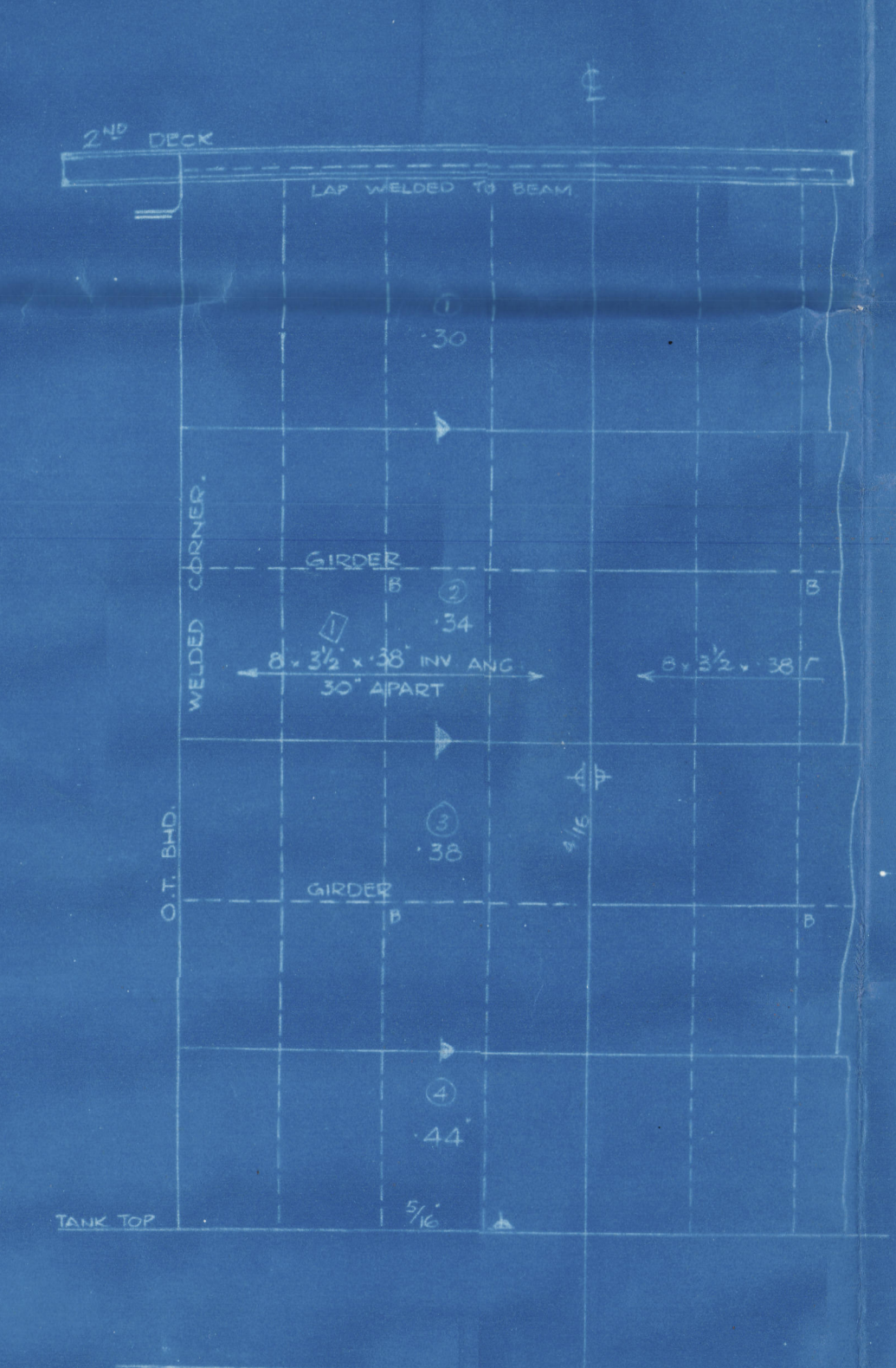
SYSTEM STRUCTURE MARKED M.
WELDED IN ABOVE UPPER DECK.
WELDED RIVETED 80° ANGLE TO BE
SUPPORTED BY A LIGHT RUN OF WELD.
SECTION 22 OF THIS RULES TO BE COMPLIED WITH
TANK POINTS OF OIL FUEL TO EXCEED 50° F.



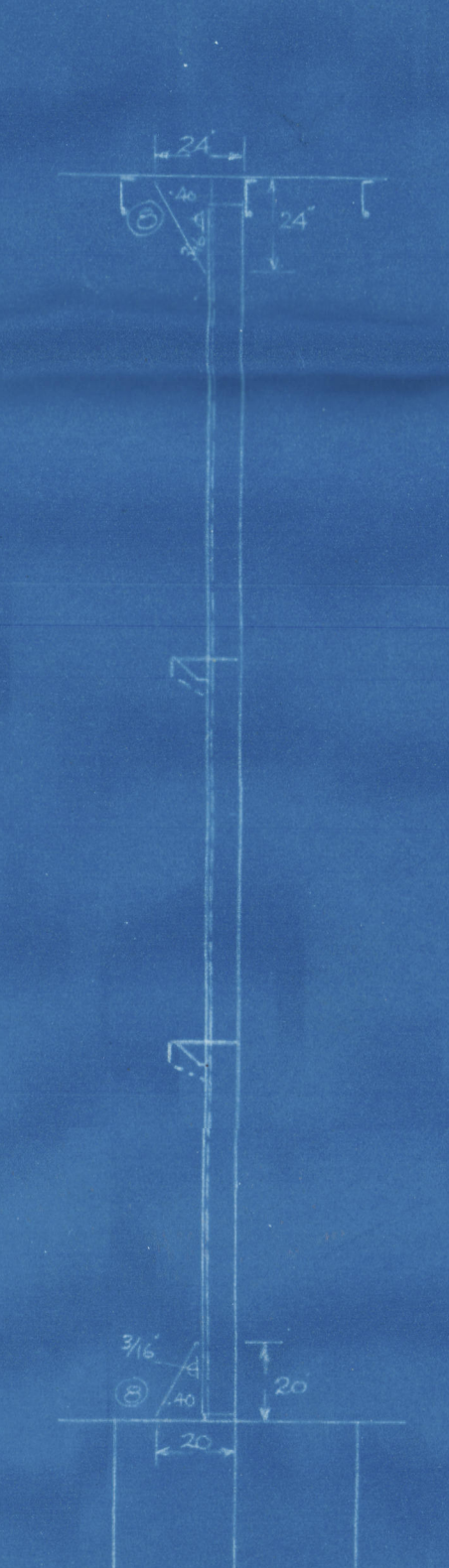
NO. 77 BULKHEAD



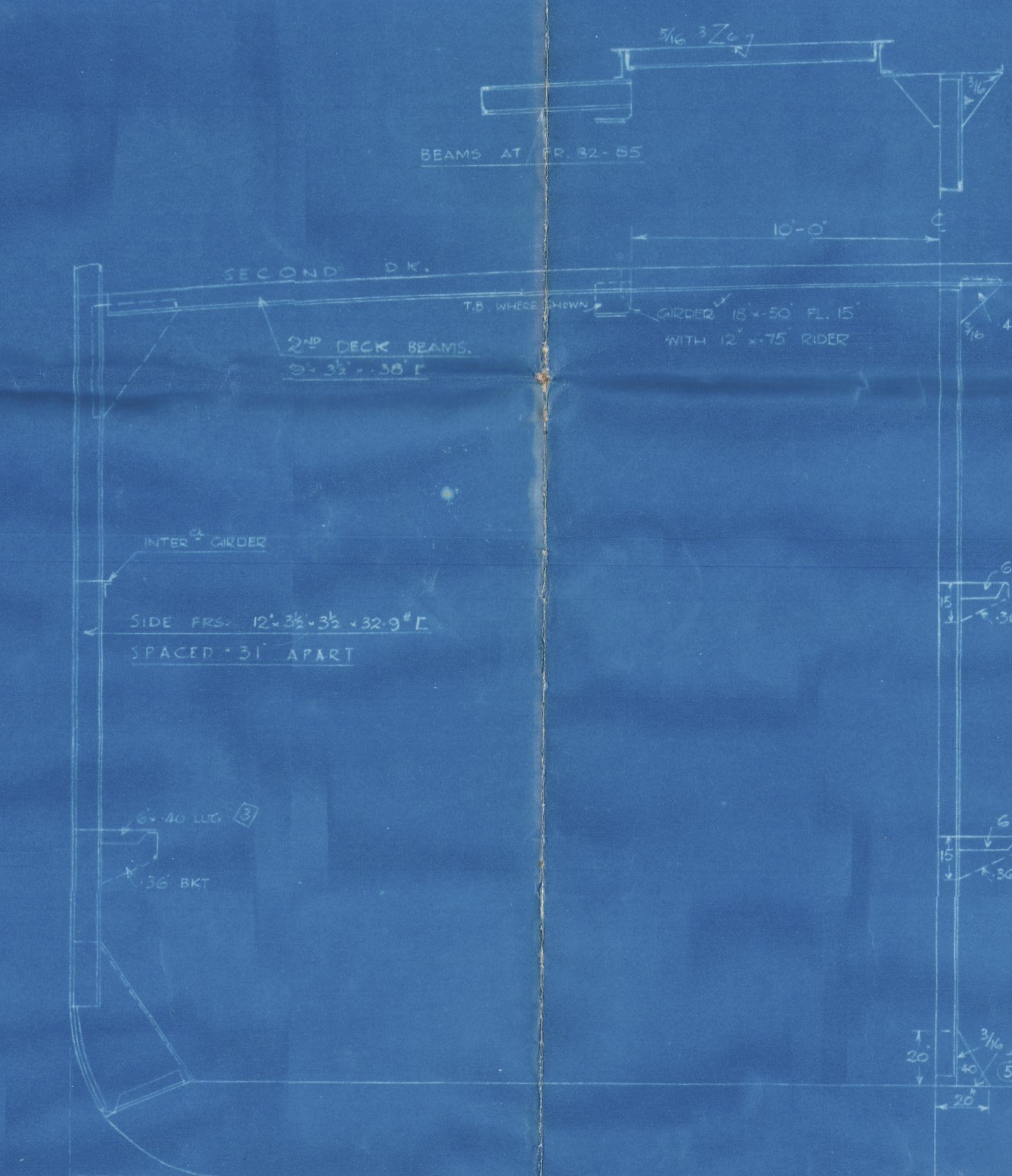
STIFFENERS ON NO. 77 B.H.D.



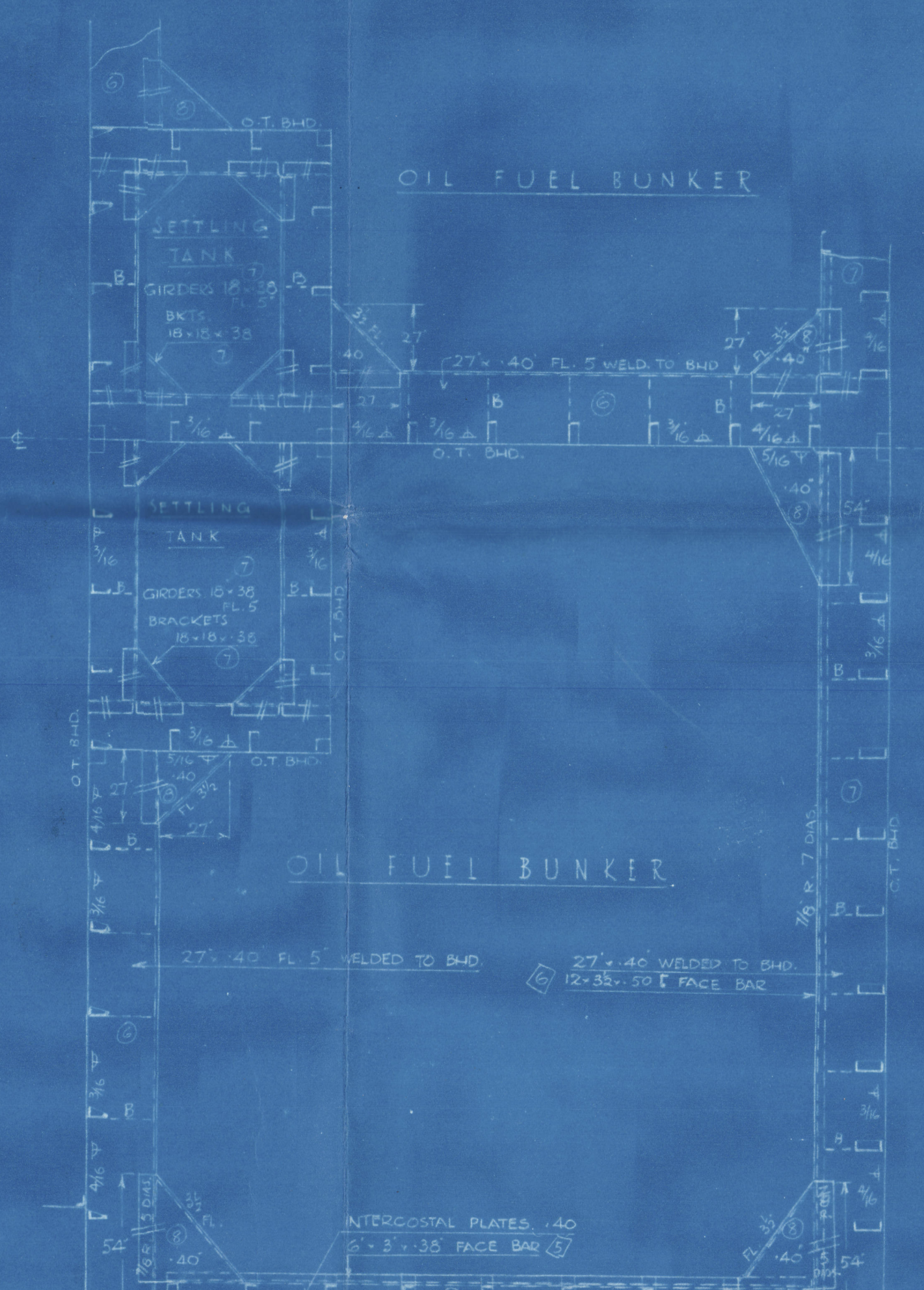
NO. 80 BULKHEAD



STIFFENERS ON NO. 80 B.H.D.



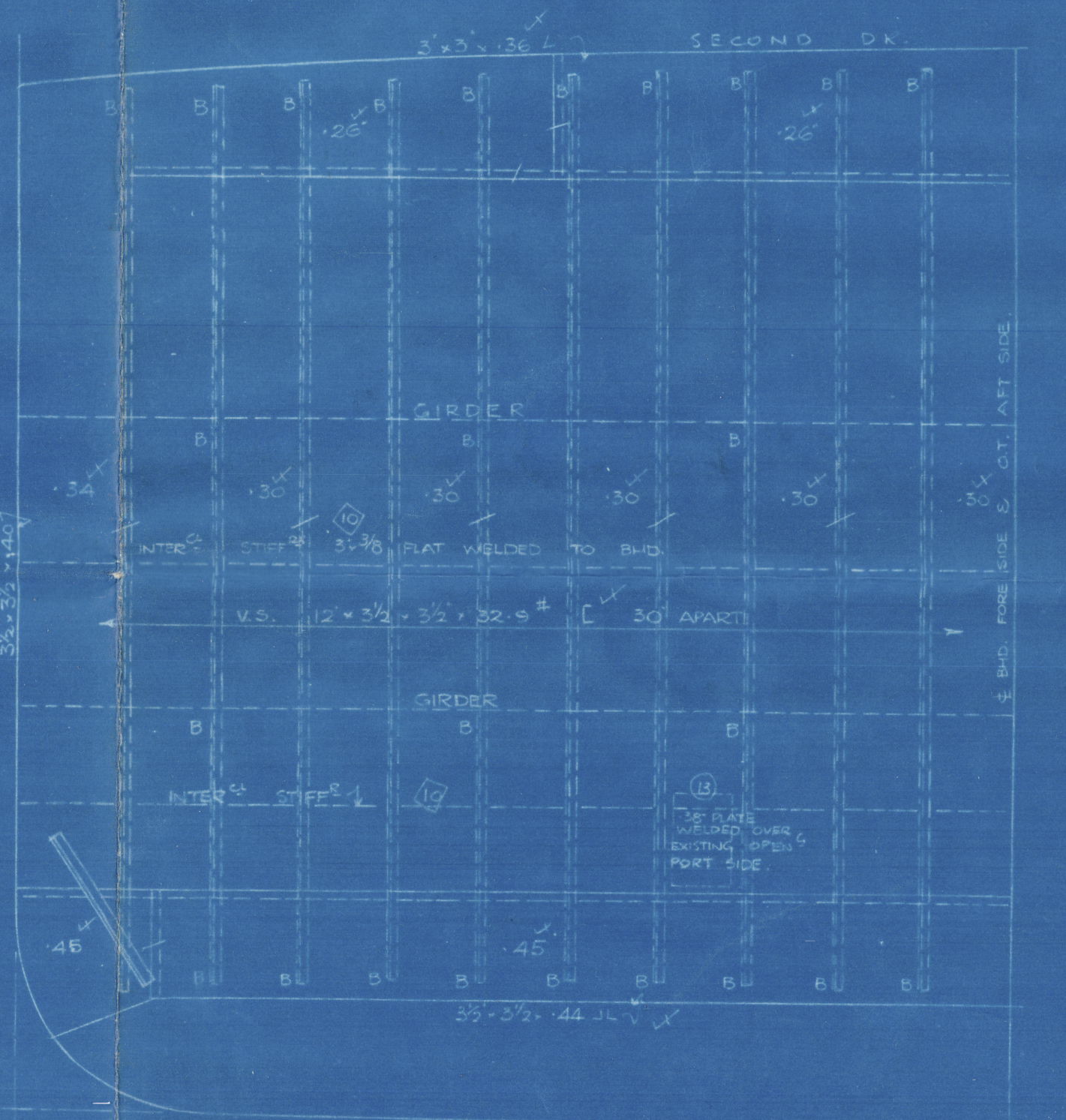
INTERMEDIATE FR. NO. 78 TO 86



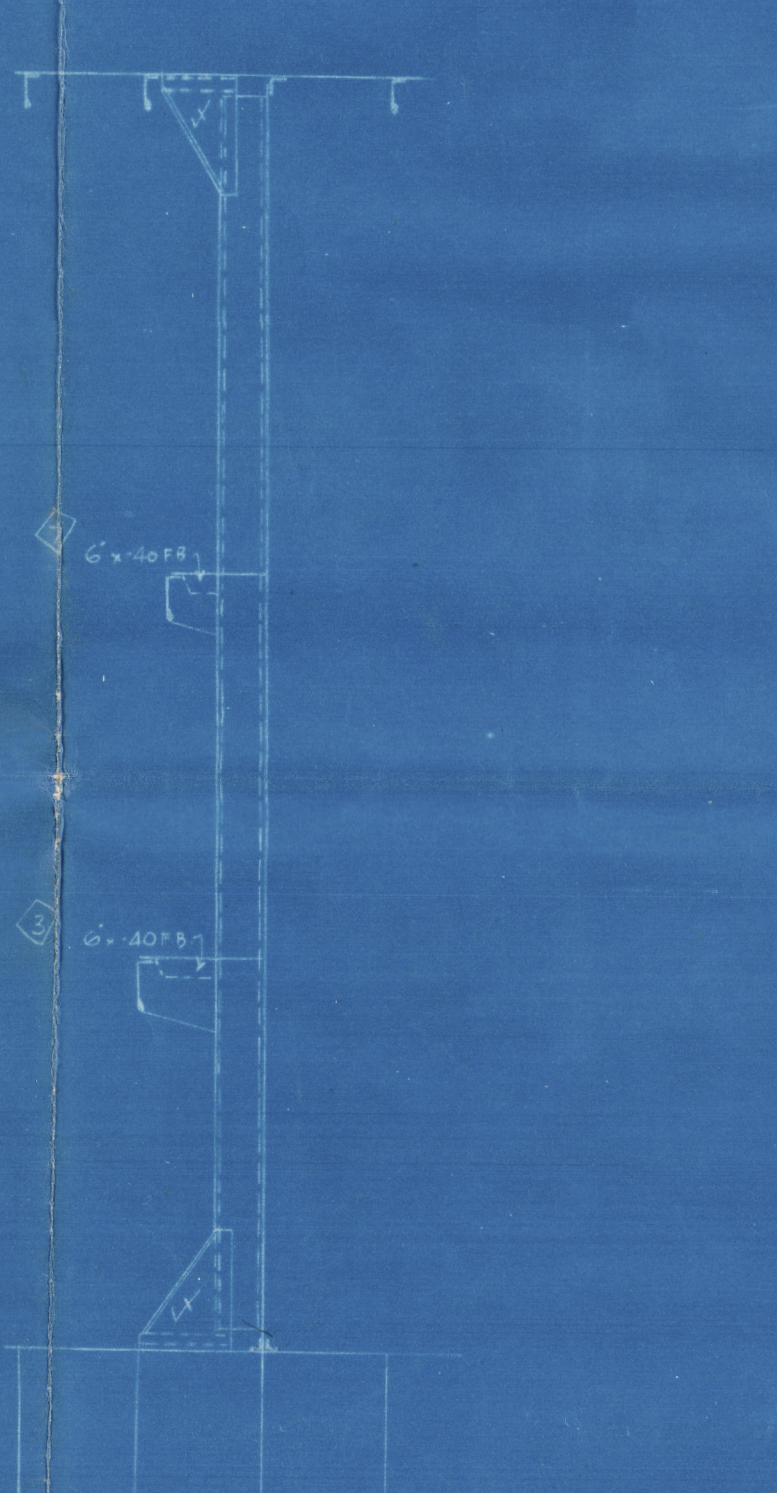
PLAN VIEW OF UPPER GIRDERS 16'0" ABOVE T.K. TOP



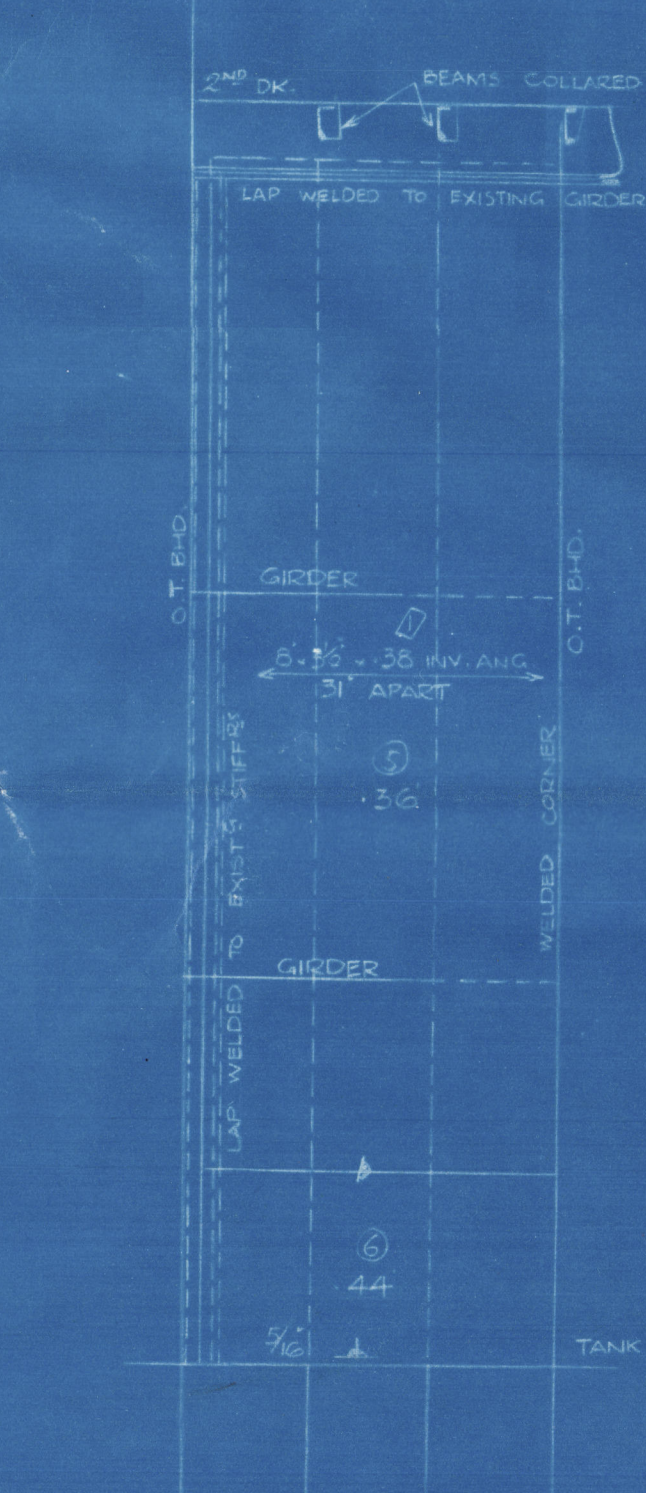
PLAN VIEW OF SECOND DECK



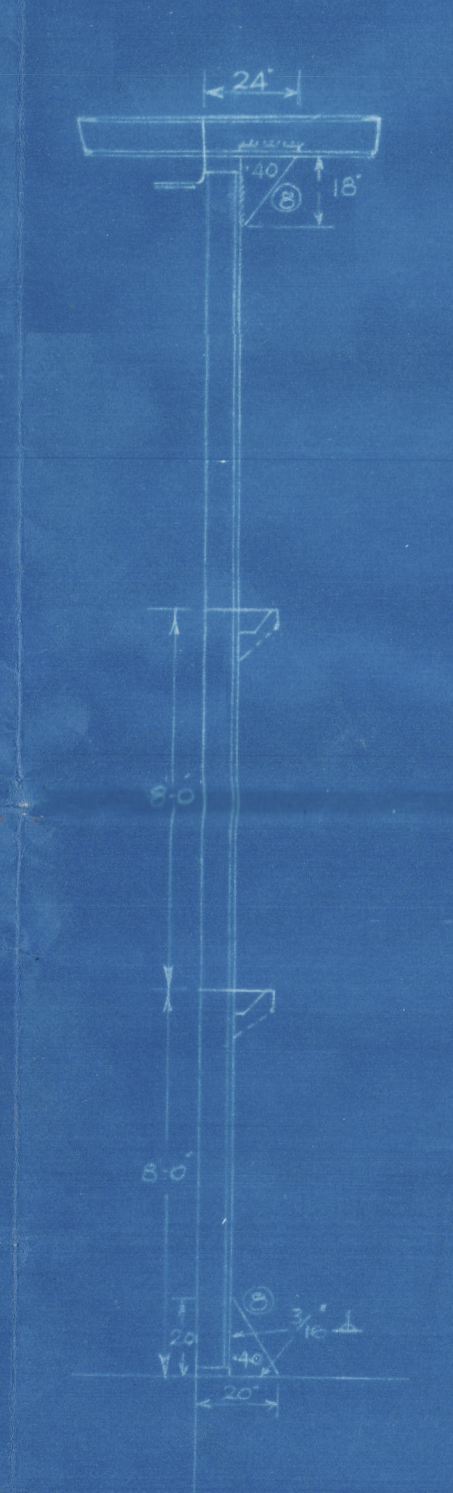
NO. 87 BULKHEAD



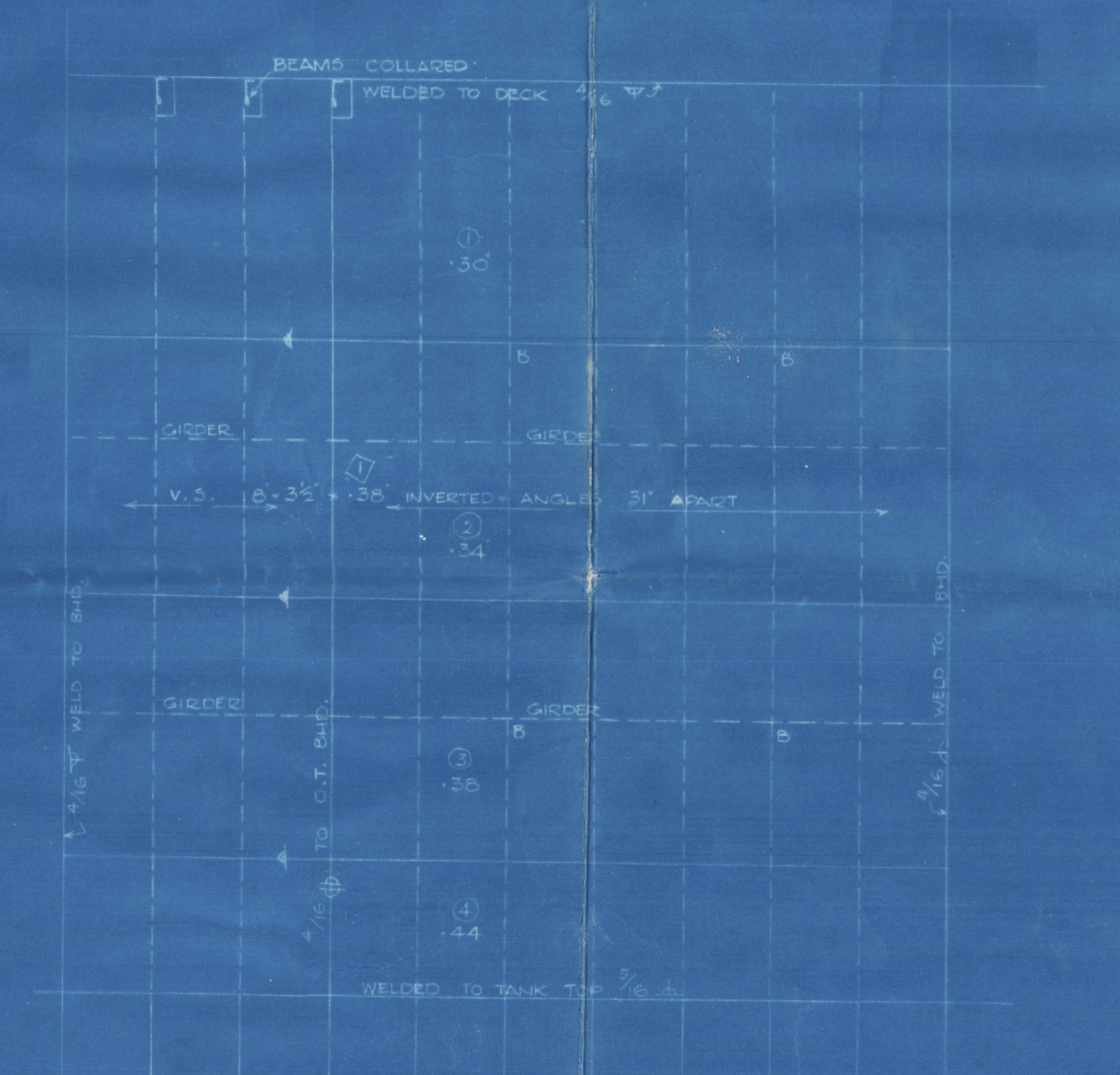
STIFFENERS ON NO. 87 B.H.D.



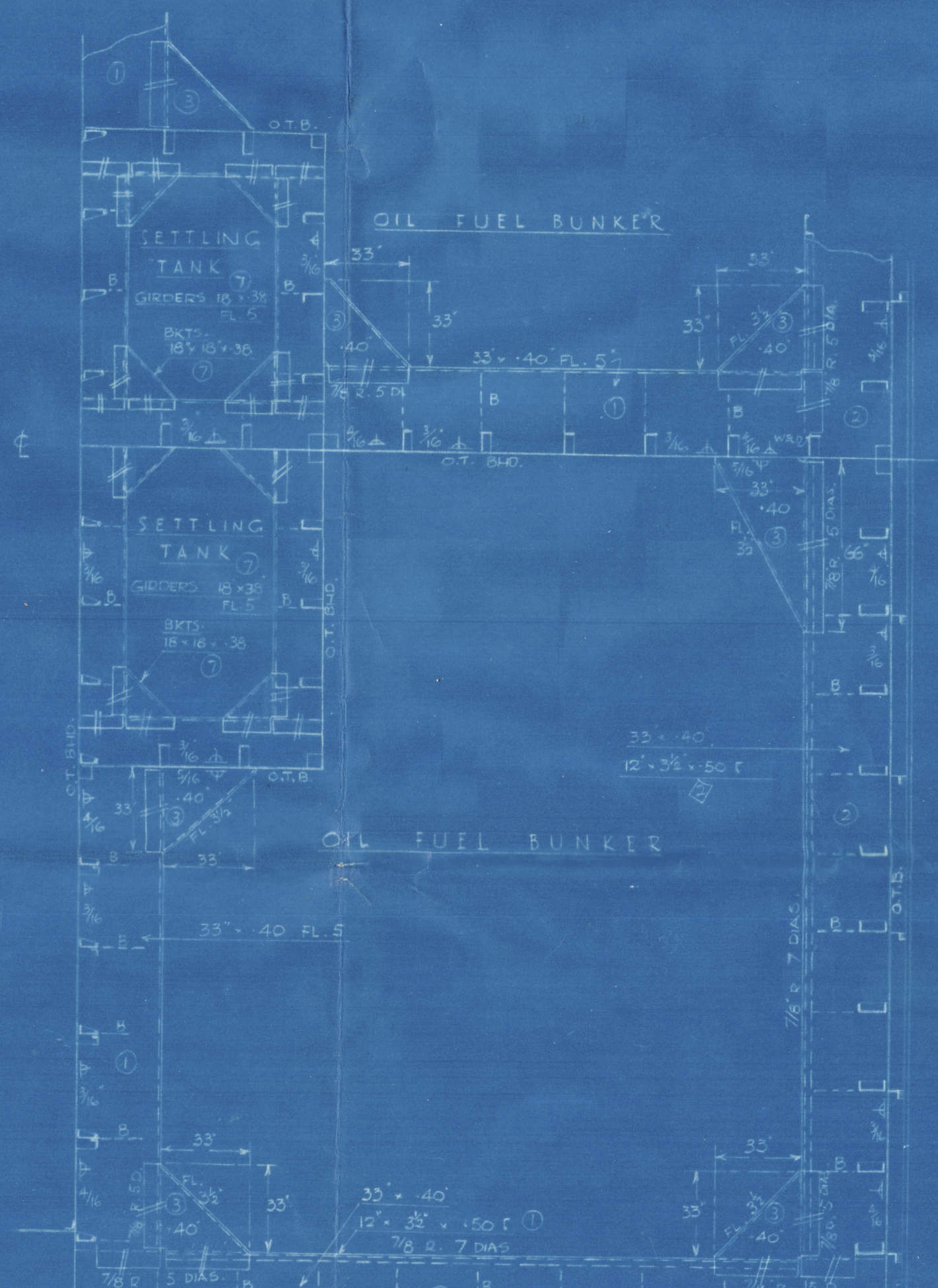
BULKHEAD 10'0" FROM 1 P.S.



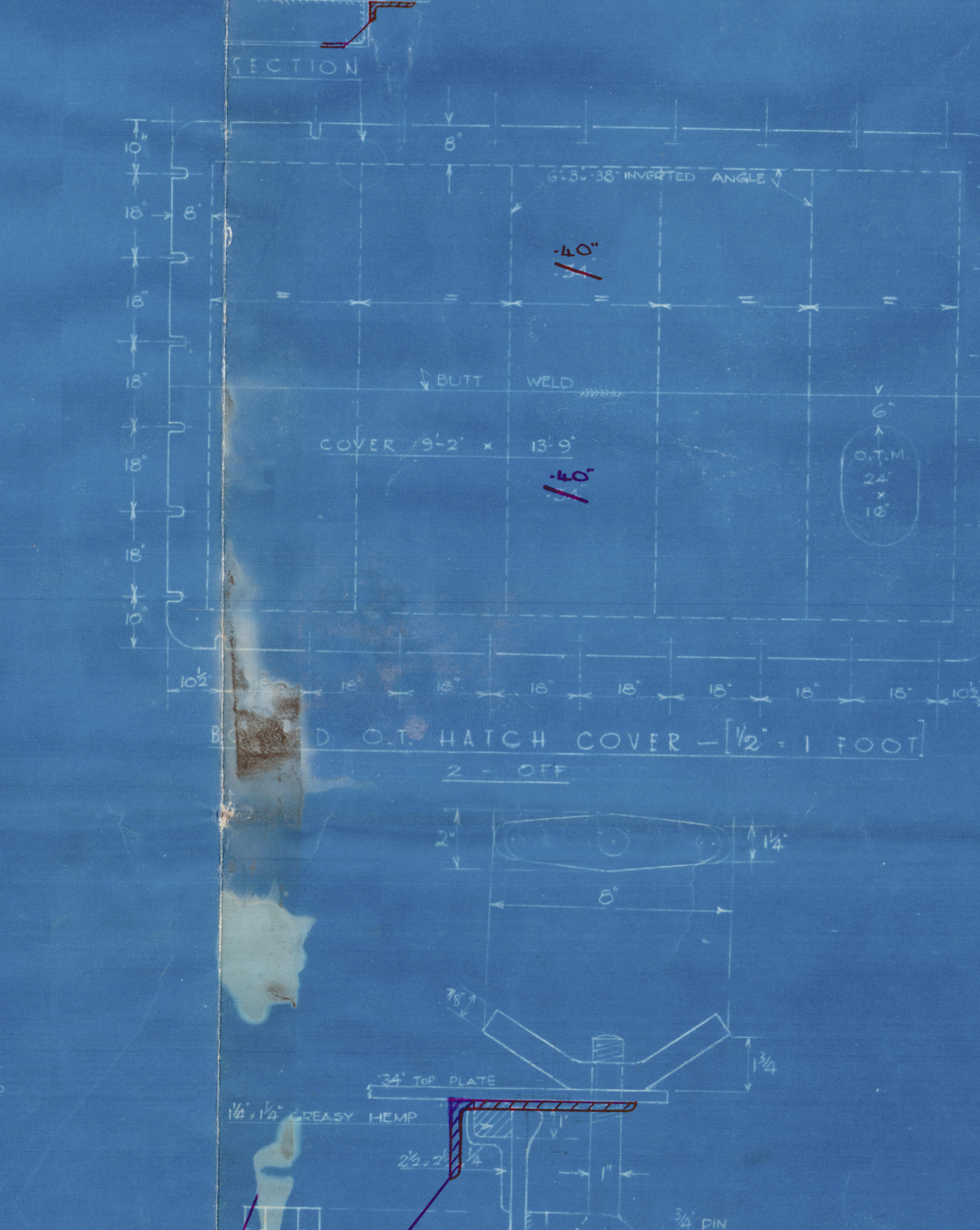
STIFFENERS ON END OF 1 P.S.



CE LINE BULKHEAD



PLAN VIEW OF LOWER GIRDERS 6'0" ABOVE T.K. TOP



DETAIL OF TOGGLES SCALE 3/4" = 1 FOOT

DRAWING NO.

O. F. Bunkers & Settling Tanks

S.S. Grandyke

nn Bemannock.

Dec. 106975.

009896-009903-0310



© 2021

Lloyd's Register
Foundation