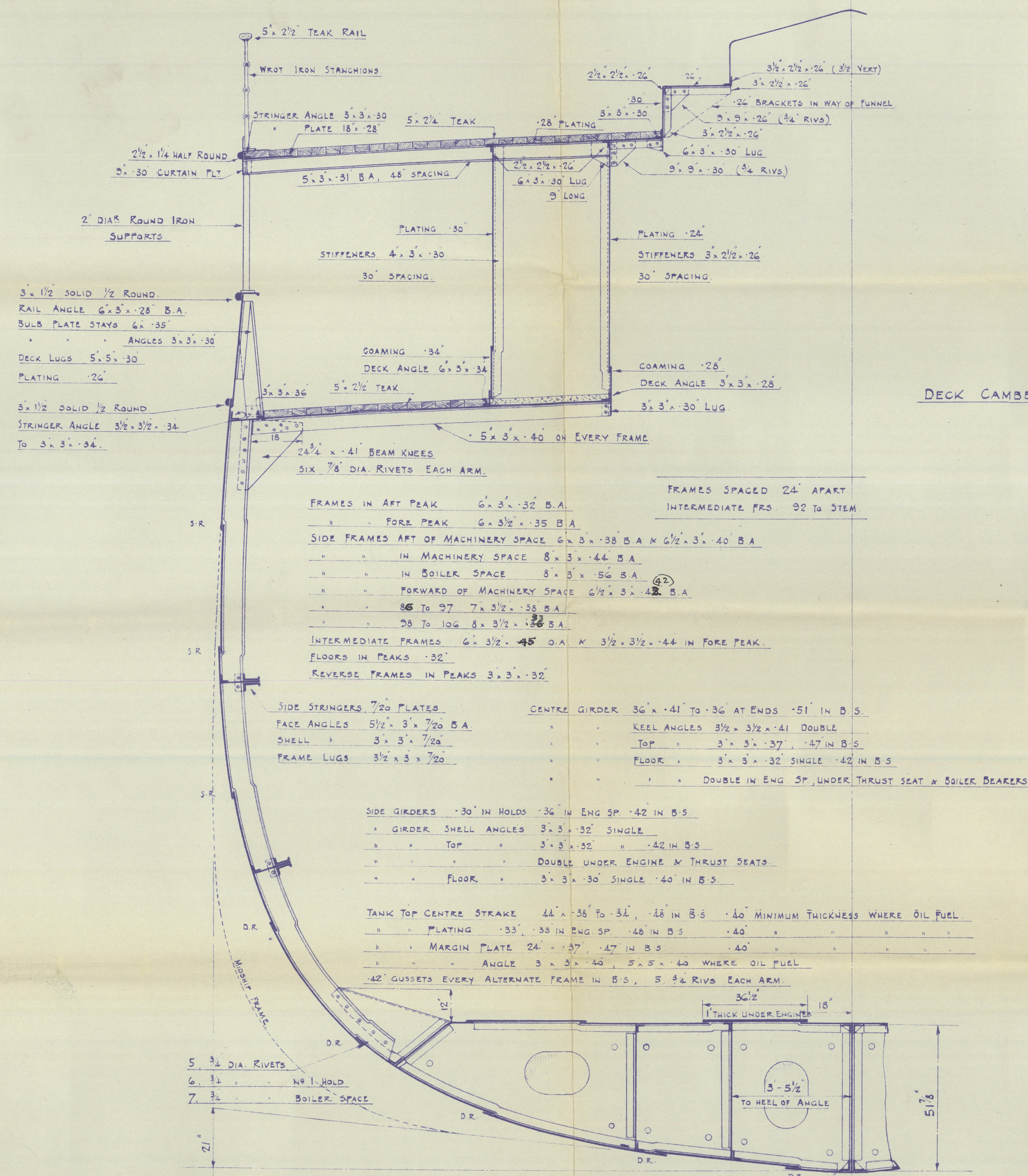
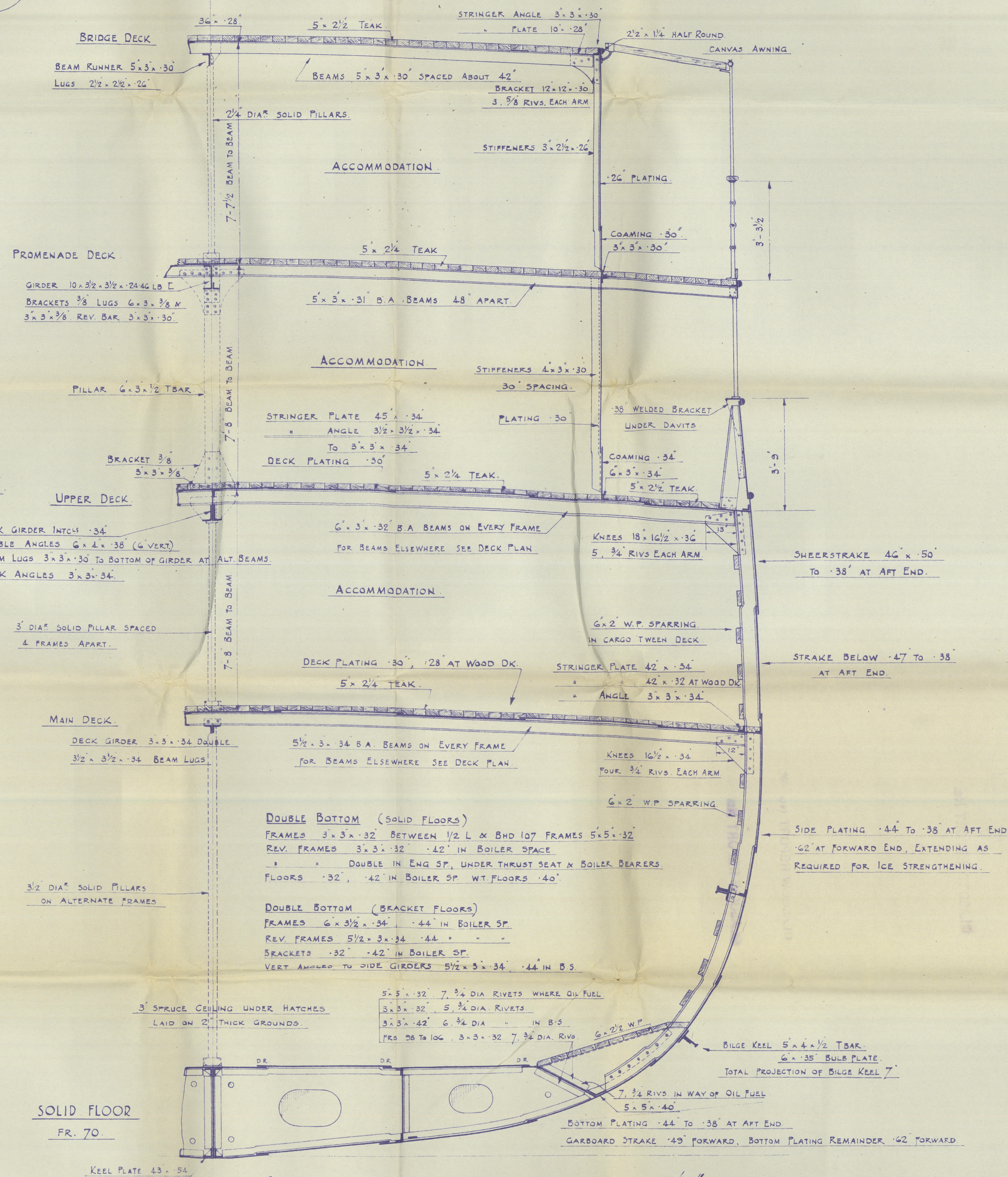


STEM	7 1/2 x 2 1/2
STERNPOST	8 1/2 x 5 1/2
RUDDER POST	8 1/2 x 5 1/2

NOTE:- BULB ANGLES SHOWN ARE 1924 STANDARD.



SECTION IN WAY OF ENGINE SPACE (FR. 44)



SECTION THRO' NO 2 HOLD & OIL FUEL D-B-TANK

# S.S. PASSENGER & CARGO VESSEL "BACCALIEU" & "BURGEO" SECTIONS.

DIMENSIONS :- 230'-0" x 37'-0" x 22'-0" MHP TO UPPER DK.

SCALE :- 1/2 INCH = 1 FOOT.

TO CLASS LLOYDS 100 A-1. STRENGTHENED FOR NAVIGATION IN ICE.

## NUMERALS

L = 230 B = 37 D = 22 d = 11.33

L x D = 5060. L x (B+D) = 13570 L/D = 10.45.

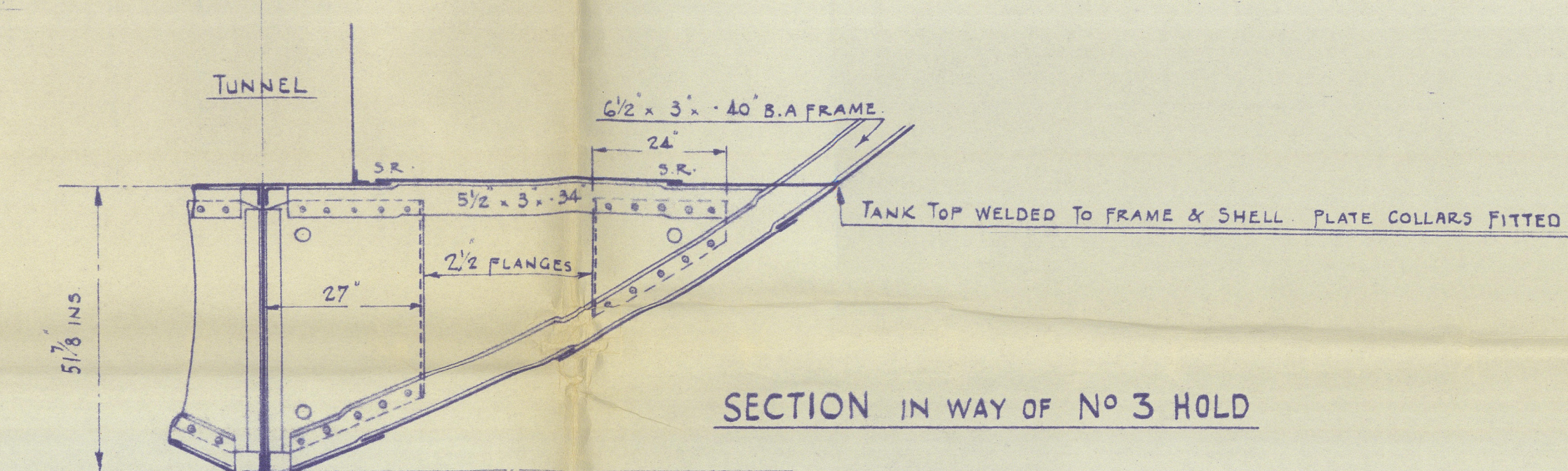
LENGTH ON LOAD LINE = 230'-0" CRUISER STERN PROJECTS 6'-9" AFT OF AP.

## EQUIPMENT

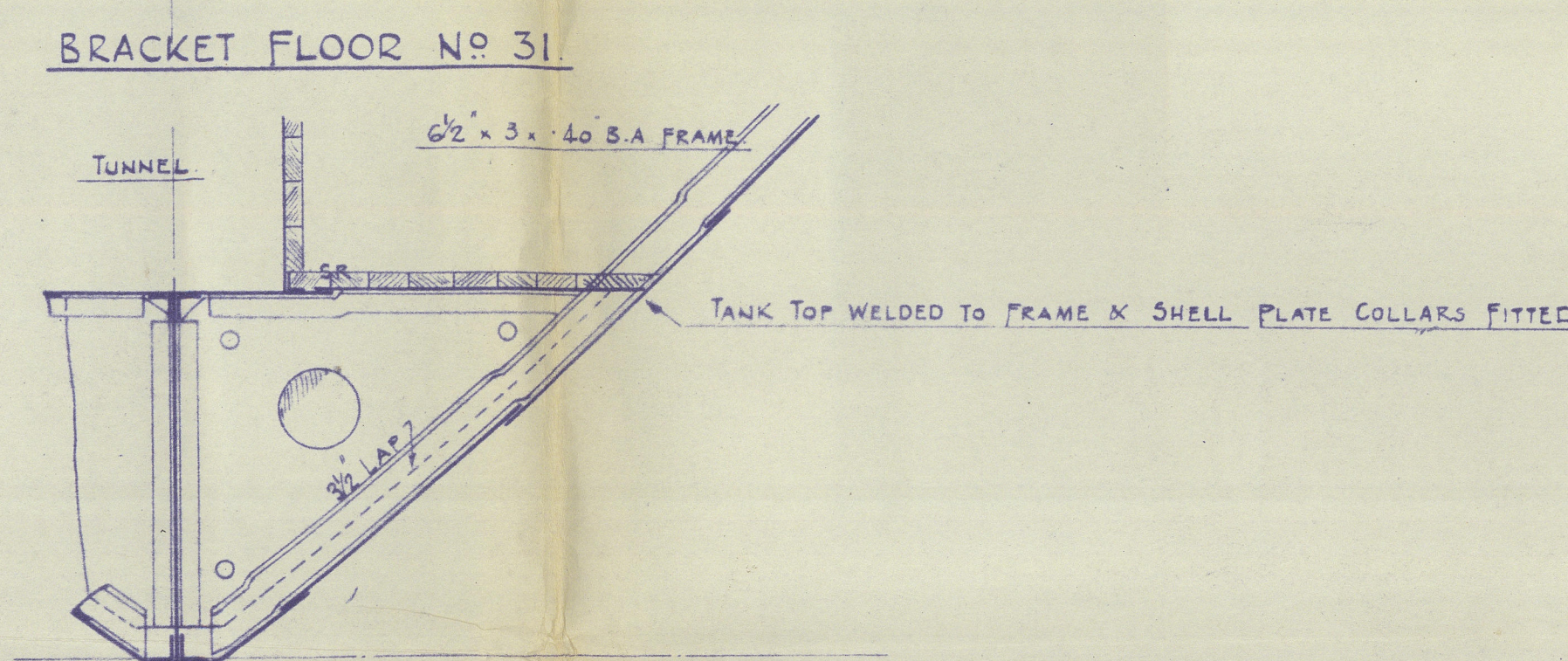
- 3 BOWER ANCHORS, STOCKLESS, COLLECTIVE WEIGHT 92 CWTs.
- 1 STREAM ANCHOR 8 CWTs. EX STOCK
- 270 FMS. 1 1/2" DIA. STUD LINK CABLE
- 85 " 4" GIRC. STEEL WIRE ROPE 6/12 FLEXIBLE
- 30 " 3/4" " " TOWLINE " "
- 90 " 6" " MANILLA HAWSEK
- 90 " 5" " WARP
- 90 " 2 1/2" " STEEL WIRE ROPE
- 120 " 3" " " " IN 2 LENGTHS. (2 1/2" IN BURGEO)
- STUD LINK CABLE OF ADMIRALTY QUALITY CABLE IRON

## RIVETING

- BUTTS OF SHEERSTRAKE T.R. STRAPS; D.R. STRAPS WHERE NOT EXCEEDING 42"
- " " STRAKE BELOW T.R. LAPS; D.R. STRAPS " " "
- " " KEEL PLATE T.R. STRAPS ALL FORE & AFT
- " " SIDE & BOTTOM SHELL D.R. LAPS APT OF 1/2 REMAINDER T.R. LAPS
- SEAMS OF BOTTOM SHELL PLATING D.R. ALL FORE & AFT
- " " SIDE SHELL PLATING S.R., EXCEPT AT ICE STRENGTHENING WHERE D.R.
- BUTTS OF UPPER DECK STRINGER PLATE D.R. LAPS ALL FORE & AFT
- " " PLATING D.R. LAPS FOR 1/2 TO S.R. AT ENDS
- SEAMS " " S.R. ALL FORE & AFT
- BUTTS OF MARGIN PLATES D.R. LAPS ALL FORE & AFT
- " " INNER BOTTOM PLATING D.R. LAPS & STRAPS
- SEAMS OF " " D.R. WHERE OIL FUEL REMAINDER S.R.
- BUTTS OF MAIN DECK STRINGER PLATE, D.R. ALL FORE & AFT
- " " PLATING D.R. LAPS FOR 1/2 L TO S.R. AT ENDS
- SEAMS " " S.R. ALL FORE & AFT



SECTION IN WAY OF NO 3 HOLD



BRACKET FLOOR NO 31

SOLID FLOOR NO 25



S.S. No. 557 x 8

PLAN No. 224

DRAWN BY J.H.

CHIEF ENGINEER

Lloyd's Register

Foundation



2/

Glasgow

Fleming & Ferguson Ltd

557-8

Sections

amended

as

built M/M. 9905

"BACCALIEU"

557 Baccalieu

GLASGOW REPORT No 62223

"Burgeo" - 558

GLASGOW REPORT No 62354.

Had

"Burgeo" 558

GLASGOW REPORT No 62483

009904-009911-0061

Lloyd's Register  
Foundation