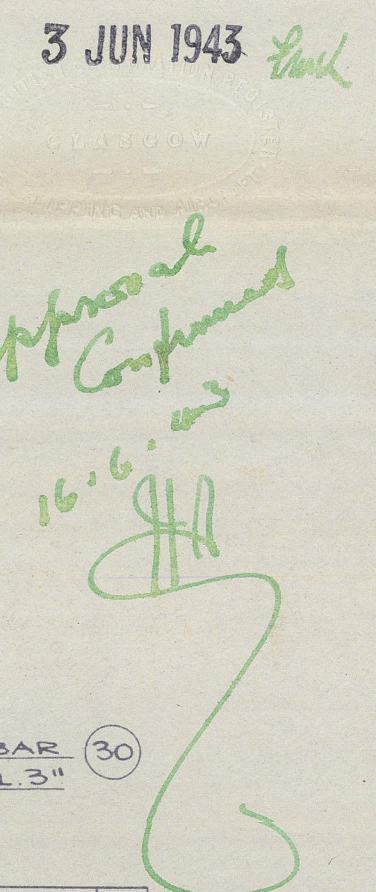
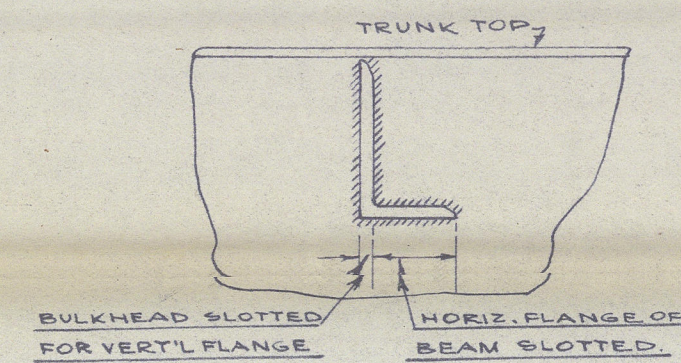


## LONGITUDINAL OILTIGHT BULKHEAD

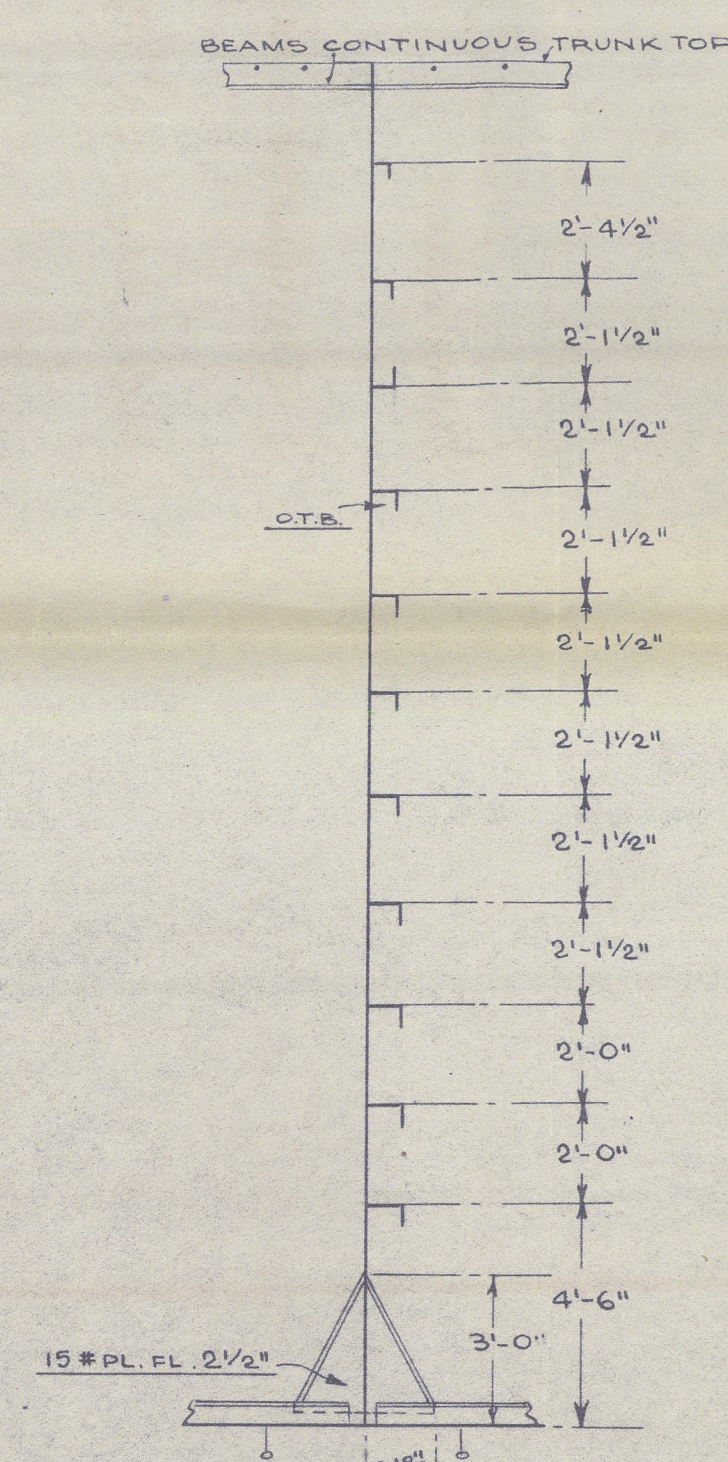
SCALE:  $\frac{1}{4}'' = 1'-0''$



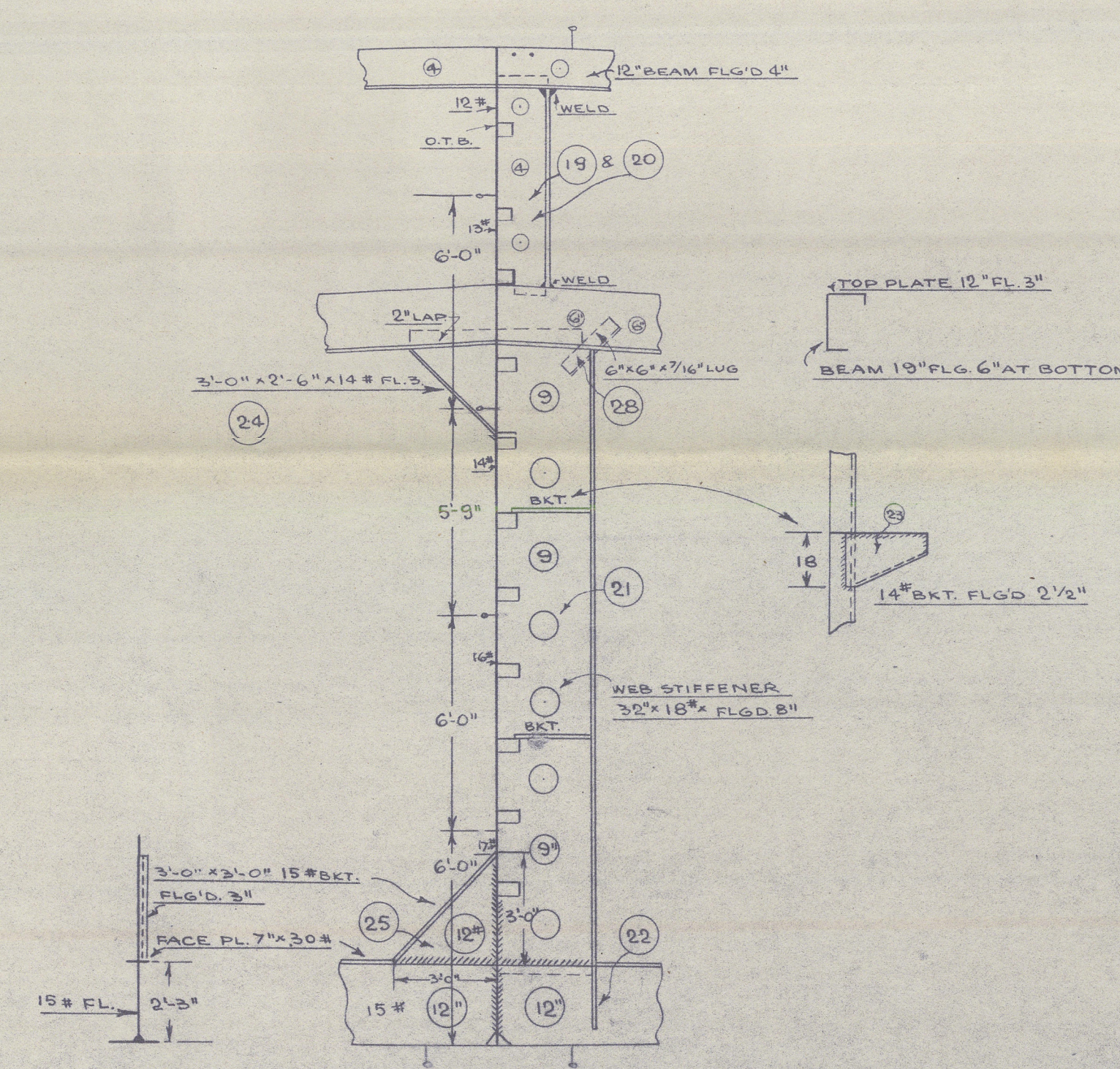
STARBOARD



METHOD OF WELDING TRUNK  
TOP BEAMS TO LONGITUDINAL  
O.T. BULKHEAD.



SECTION IN WAY OF  $\phi$  BKHD.  
AT ORDINARY FRAME  
LOOKING AFT.



SECTION IN WAY OF  $\phi$  BKHD.  
AT WEB FRAME  
LOOKING AFT.

APPROVED BY B.C. 5.2 43  
C.S.I. 10.2.43.



GERMAN & MILNE  
NAVAL ARCHITECTS, MONTREAL  
LONGITUDINAL OILTIGHT  
BKMD.  
(FR. 30-101)  
DATE: 28.1.43 DWG. N. W85-7

009904-009911-0140



Longitudinal O.T. Bulkhead.

Collingwood Shipyards Ltd

Ocean Tankers Nos 123-4-5

14. 4. 43.

COLLINGWOOD S.B.CO. MARINE INDUSTRIES LTD.

123 NIPAWAN PARK 141 OTTERBURN PARK

124 NORWOOD PARK 142 EGLINTON PARK

125 SPRINGBANK PARK 143 MILLICAN PARK

D/S 731

*[Signature]*

3 JUN 1943

Ocean Tankers.

Longitudinal O.T. Bulkhead.

0710-116600-706600