

# Lloyd's Register of Shipping.

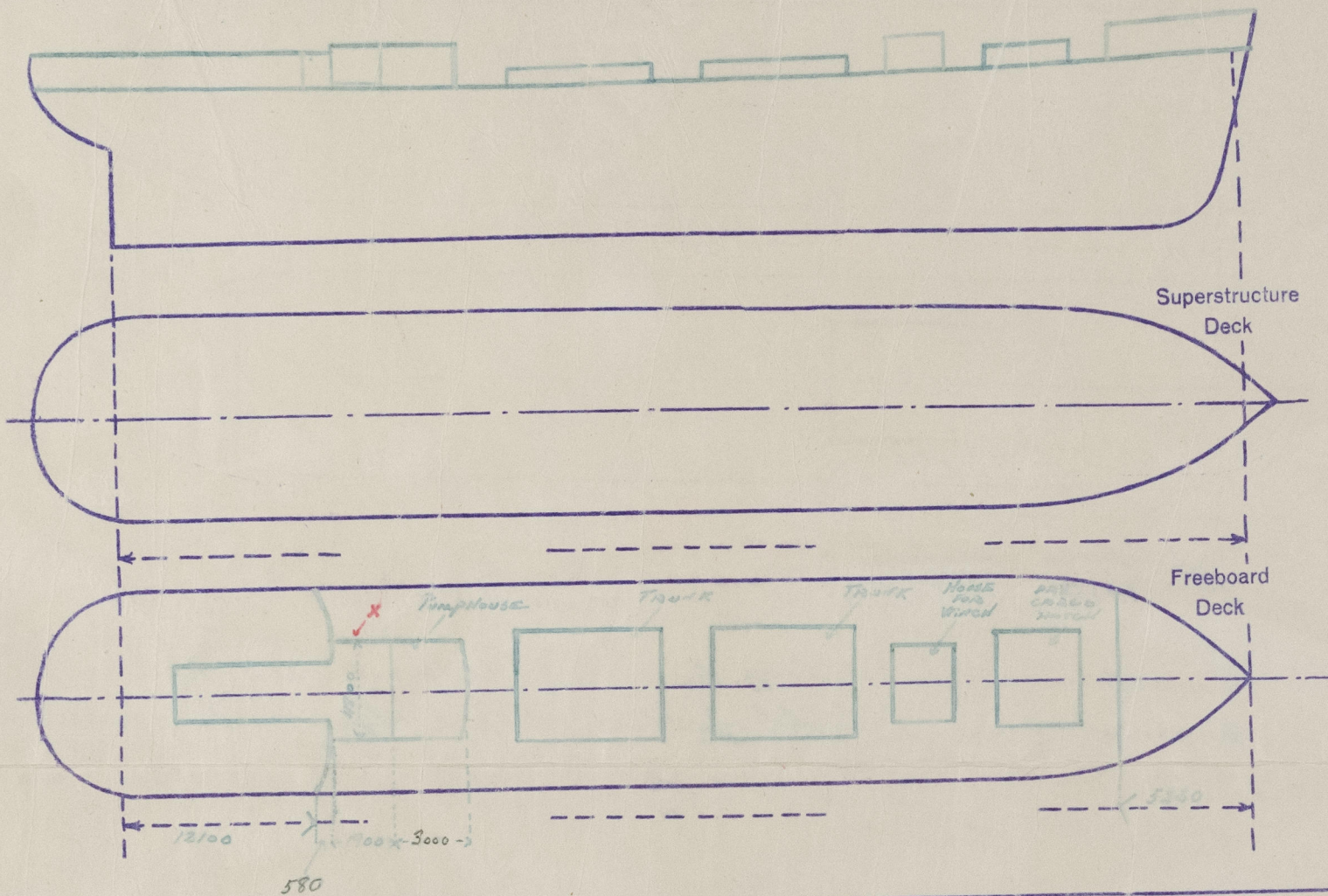
## SURVEYS FOR FREEBOARD.

(CONDITIONS OF ASSIGNMENT.)

30 OCT 1942

Ship's Name M. "DIVINA" Port of Survey Stockholm  
Official Number \_\_\_\_\_ Surveyor's Signature R. J. [Signature]  
Nationality and Port of Registry Swedish, Stockholm Date of Survey 30, 13, 92, 8, 15, 28, 1/9

Disposition and dimensions of superstructures, trunk, deckhouses and machinery casings to be inserted in the diagrams and tabular statement:—



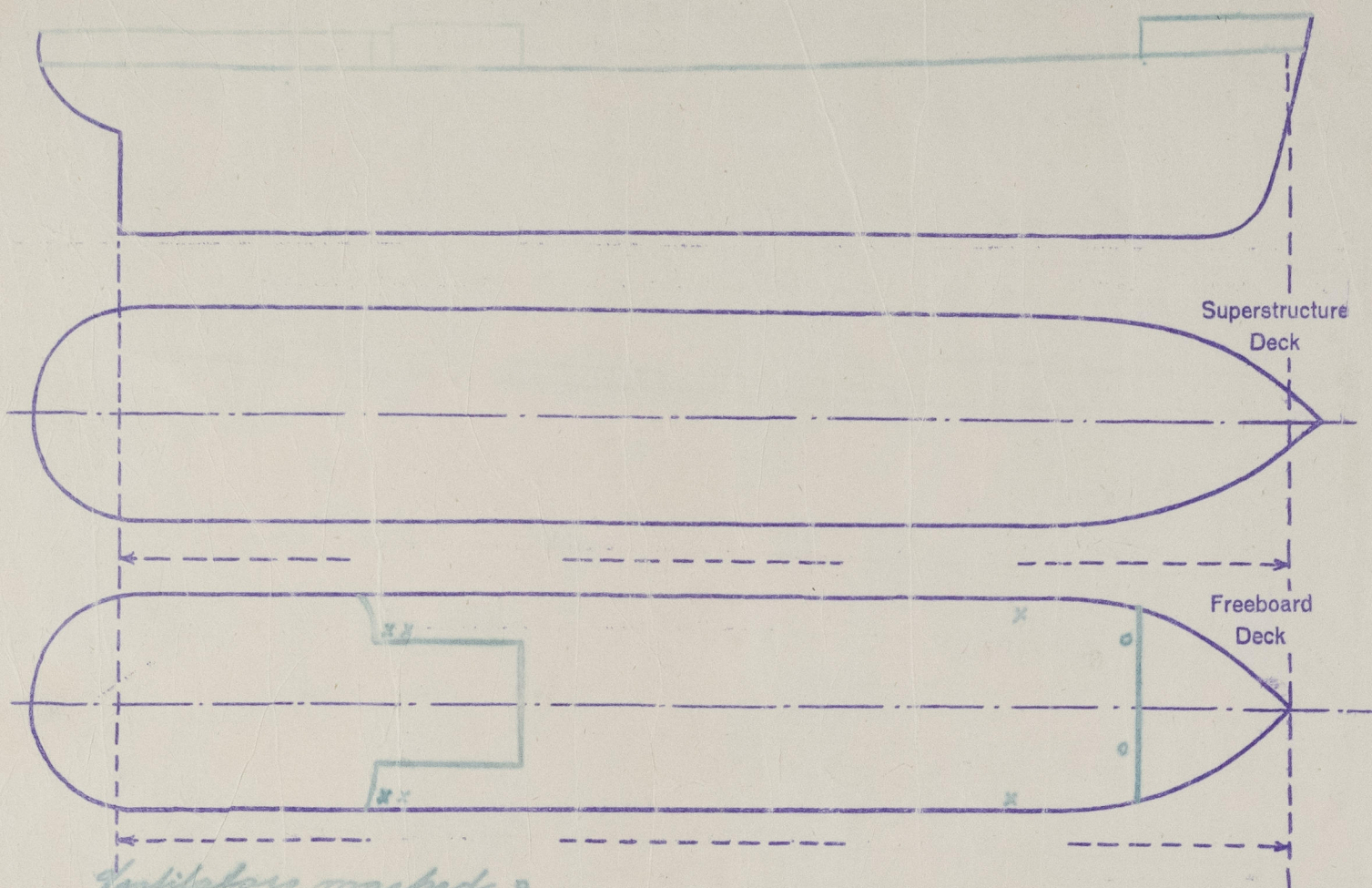
Particulars of Superstructures, Trunks, Casings, Deckhouses.								
	Coaming	Plating	Stiffeners	Spacing	End Attachments of Stiffeners	Size of Openings	Height of Sills	Height of Casings
Poop Bulkhead	150x13.5	7.5	140x65x9.25	240	also internal brackets at top and bottom	No opening	2100	
Raised Quarter Deck Bulkhead								
Bridge, After Bulkhead								
Bridge, Forward Bulkhead								
Forecastle Bulkhead	7.0	6.0	65x65x6	660	Brackets at top	1600x600	220	2150
Trunk, Aft								
Trunk, Forward								
Exposed Machinery Casings on Freeboard on Raised Quarter Decks		7.0	140x65x9.5	690	Keels top and bottom	None		2220
Exposed Machinery Casings on Superstructure Decks (Pump House)	320x7	6.0	65x65x7.0	580	None	1440x600	390	2100
Machinery Casings within Superstructures not fitted with Class I Closing Appliances	400x7	6.0	65x55x7.0	580	None	1540x600	220	2100
Deckhouses on Flush Deck ships (Pump House)	400x8	7.5	140x65x9.25	660	Keels top and bottom	1350x600	500	2200

Particulars of Closing Appliances (state if capable of being manipulated from both sides).

Poop Bulkhead	No opening
Raised Quarter Deck Bulkhead	
Bridge, After Bulkhead	
Bridge, Forward Bulkhead	
Forecastle Bulkhead	Steel door with handle openings both sides.
Exposed Machinery Casings on Freeboard on Raised Quarter Decks	No opening
Exposed Machinery Casings on Superstructure Decks	Steel doors with handles openings both sides
Machinery Casings within Superstructures not fitted with Class I Closing Appliances	Steel doors with handle openings both sides
Deckhouses on Flush Deck ships (Pump House)	Steel doors with handle openings both sides

## PARTICULARS OF PROTECTION TO OPENINGS, ETC.

The following diagrams should be used to indicate the positions of cargo and coaling hatchways, gangway, cargo and coaling ports, ventilators, companionways, etc., which would affect the seaworthiness of the ship —



Particulars of fiddle, funnel and ventilator coamings, engine room skylight and other openings in machinery casing tops and their means of closing:—

*Funnel and ventilators to E.R. fitted on boat deck.  
Engine room skylight of steel. All are efficiently constructed.*

Particulars of Flush Bunker Scuttles:—

*None.*

Particulars of Companionways:—

*None.*

Particulars of Ventilators in exposed positions on freeboard and superstructure decks:—

*Two off 230 Tm diam. 3300 x 9 Tm coaming.  
Ventilator coamings specially supported to be  
forward the bulkhead.  
Wood covers and tarpaulins for closing fitted.*

Particulars of Air Pipes in exposed positions on freeboard, raised quarter, or superstructure decks:

*Two - 2" air pipes, to cross-bunkers, with 2360 Tm high goose necks.  
One - 3" air pipes, to cofferdams, with 860 Tm high goose necks.*

*All air pipes of steel and fitted with means of closing.*



© 2021

Lloyd's Register  
Foundation



30 OCT 1942

370 41  
11-4

of Stockholm.

m/t "DIVINA"

Stockholm

\*100A1

11th Sept., 1942.

Rederi A.-B. Diana, of Stockholm.

XXXX

296	mm.	165	mm.
379	mm.	82	mm.
378	mm.	83	mm.
461	mm.		
544	mm.	83	mm.
595	mm.	134	mm.

3967

*R. J. Anderson*

14' - 6"  
1' - 6 1/4"  
© 2021

*S. B.*



Lloyd's Register  
Foundation

# PARTICULARS OF PROTECTION TO OPENINGS, ETC.

Hatchways on Freeboard and Superstructure Decks.			
Description of Hatchway		DRY Cargo Hold	WATER TIGHT TANK
Dimensions of Hatchway		2300 x 2300	1140 x 240
COAMINGS	Height above Deck	830	930
	Thickness	10	10
	Stiffeners	65x10	10
	Brackets, Stays	Fastenal	✓
HATCH BEAMS	Number		
	Spacing		
FORE AND AFTERS	Number		
	Spacing		
HATCH COVERS	Material	Steel cover	Steel cover
	Thickness	10	10
Spacing of Cleats	Number	390	380
	Number of Tarpaulins	✓	✓

\*) Are wood fore and afters steel shod at all bearing surfaces?  
 Are tarpaulins in good condition and in accordance with rule requirements?  
 Are battens and wedges efficient and in good condition?  
 Are lashings provided in accordance with rule requirements?

\*) This cover has the same dimensions as the one on the H<sub>1</sub> "GLAN".

Particulars of any special features.—

DRAUGHT:—

DISPLACEMENT:—  
(INTERNAL)

TONS PER INCH:—

75 % of depth  
 85 % — — —  
 95 % — — —

1000 tons  
 1160 — —  
 1328 — —

9.38  
 9.54  
 9.78

Similar ship: The H<sub>1</sub> "GLAN" Home to Chambers Ward  
 yard No. 122.

Endorsement at first surveys and at surveys for renewal of Certificate:—

The fittings and appliances are in accordance with the particulars shown on this form (or as now modified) and are in good condition.



© 2021

Lloyd's Register  
 Foundation

Particulars of Gangway Cargo and Coaling Ports:—

*None* ✓

Particulars of Scuppers and Sanitary Discharge Pipes:—

*One discharge pipe is led through the ship's side below main deck, and the other ones are led through the ship's side above main deck.*

*All pipes are fitted with storm valves.* ✓

Particulars of Side Scuttles:—

*All side lights are above main deck and fitted with deadlights.* ✓

Vertical distance of Sill of lower Scuttle above top of keel

Particulars of Guard Rails:—

*Open rails on main deck 1000 fm high with 3 horizontal rods. Stanchions spaced 1180 fm apart.  
Open rails on poop deck 1050 fm high with 3 horizontal rods. Stanchions spaced 1480 fm apart.  
Open rails on quarter deck 1090 fm high with 3 horizontal rods. Stanchions spaced 1300 fm apart.*

Particulars of Gangways, Lifelines, etc.:—

*Life lines will be fitted as convenient.*

*Cargo Stowage Assigned.* ✓

Particulars of Freeing Arrangements.						
<i>Port.</i>	Length of Bulwark	Height of Bulwark	Size of Freeing Ports	Number each side	Area each side	Rule area each side
After Well .....						
Forward Well .....	<i>11.800</i>	<i>1.000</i>	<i>1180 x 340</i>	<i>2</i>	<i>0.57</i>	
State position of each freeing port ..... } <i>After Well:—</i> (F. and A. position and height above deck edge) } <i>Forward Well:—</i> <i>From quarter bulkhead 3.600 - 3.900 fm (300 fm high above deck)</i>						
State whether the freeing ports are fitted with shutters, bars, or rails, and give particulars of such:—						
Additional area where sheer is less than standard.						



© 2021

Lloyd's Register  
Foundation