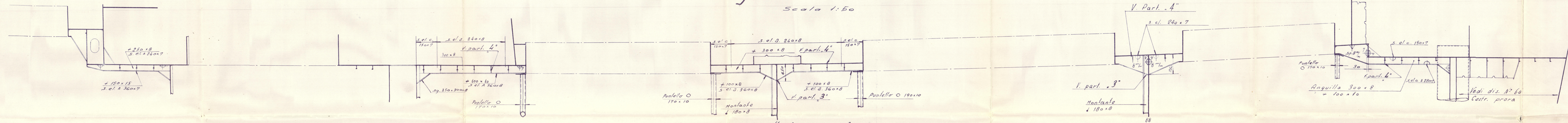
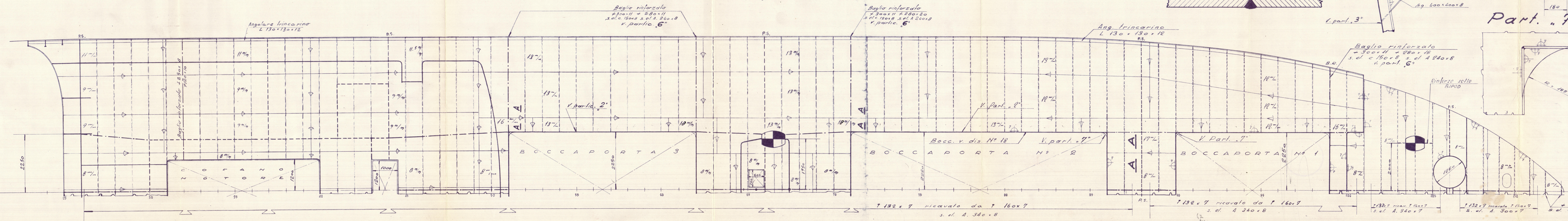
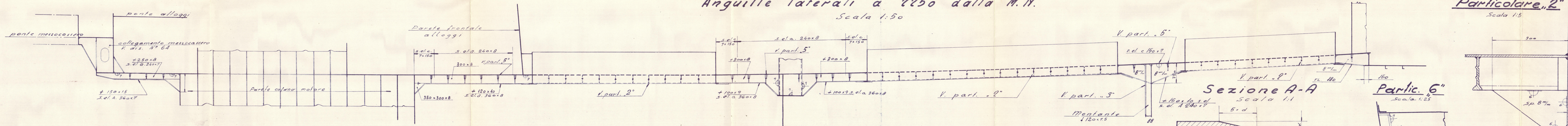


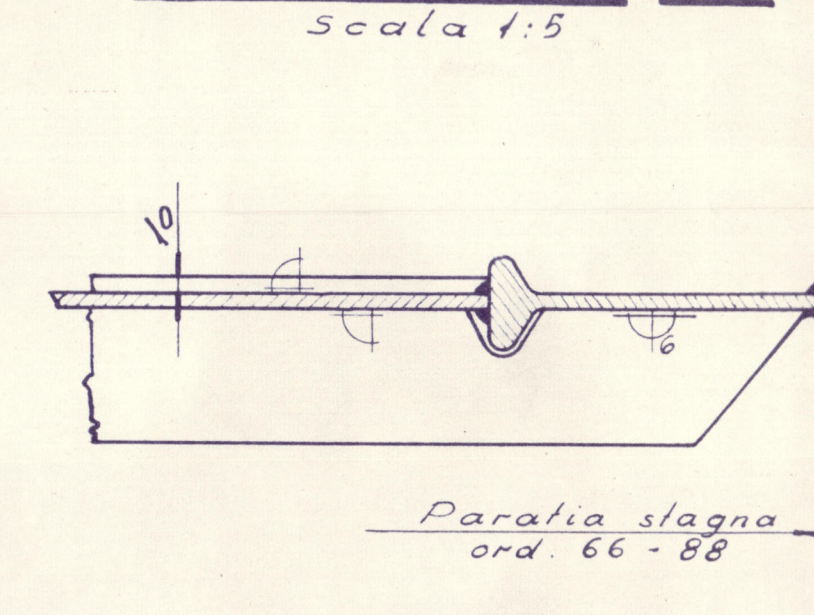
Anguille centrati



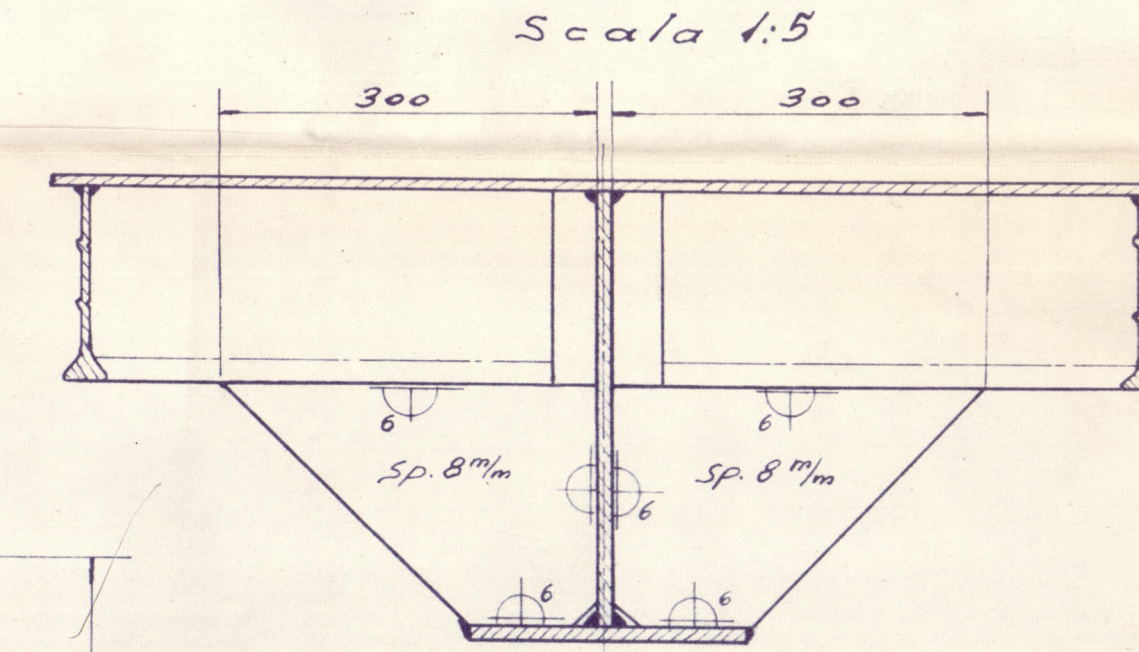
Anguille ⁶⁶ *lateralis* a 2250 dalla M. N.



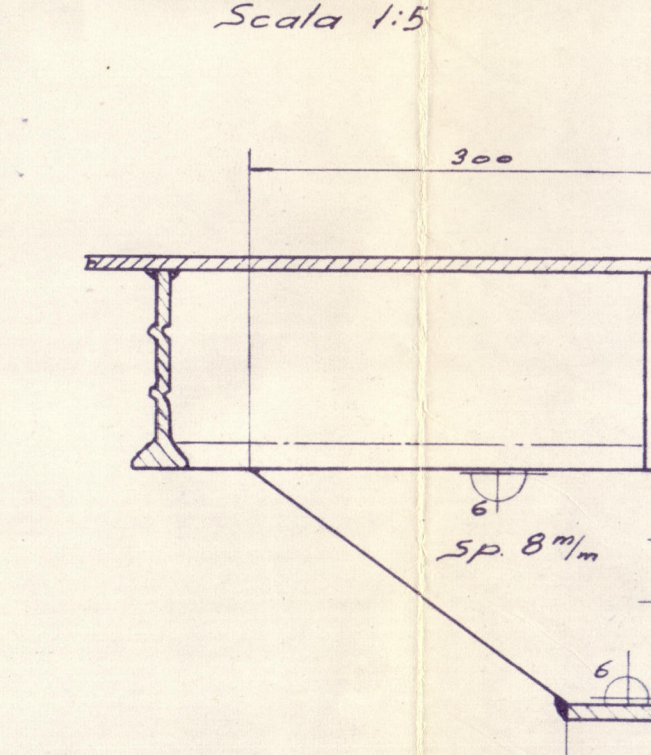
Particolare „3“



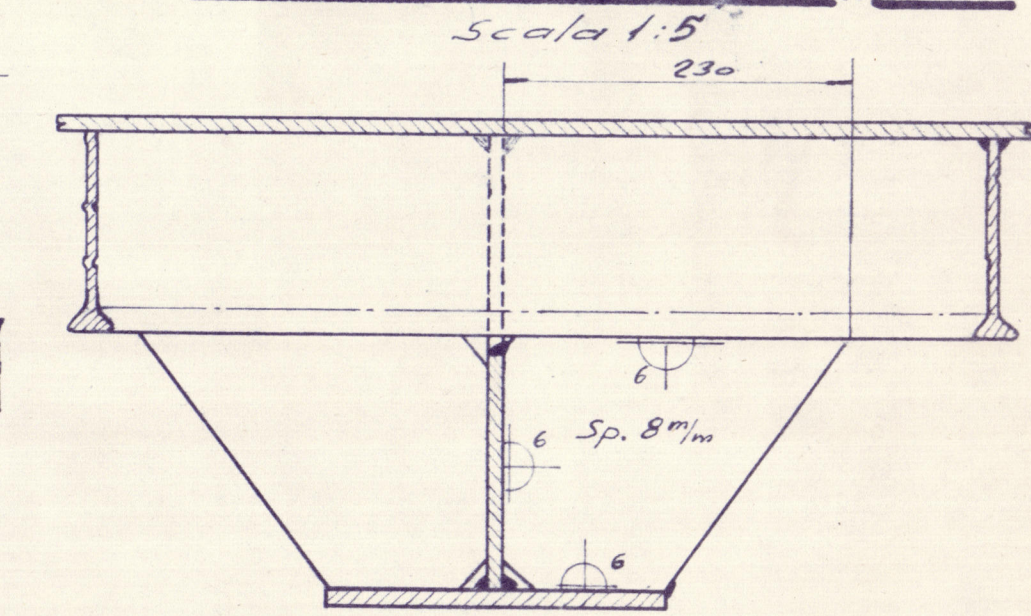
Particolare:



Particolare „2“



UPPER



Disegno aggiornato in data 11-7-

APPROVATO DAL R.I.N.A. IN DATA 21-11-55
APPROVATO DAL R.L. IN DATA 9-11-55
APPROVATO DAL A.B. IN DATA 9-11-55

CANTIERE NAVALE GIULIANO S. GIUSTO
— TRIESTE —

Motonave da carico

COSTR.: *N. 45* Modificato

DIS.: N. 63	SCALA: 1:50 - 1:
-------------	------------------

Ponte coperto

DATA: 17-1-56 DISEGNATO: *Antares*

Foundation

009986-0044430186



M.V. "CAPO FARO"

CANTIERE NAVALE GIULIANO S.GIUSTO

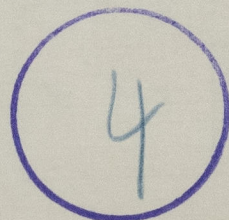
YARD N°. 45

TRIESTE REPORT N°. 14470

UPPER DECK

THIS IS A VERIFIED COPY OF THE APPROVED PLAN

RECORDS DEPT.,
LONDON.



© 2021

Lloyd's Register
Foundation

004486-009445-0186