

VERBOUWING L.C.F. - LANDINGSVAARTUIG TOT MOTORKUSTVAARTUIG

DOORSNEDEN EN HUID

SCHAAL 1:20 EN 1:75

DOORSNEDE OVER LUKSCHILD

DETAIL 1/4 GANGBOORD 1:5

DOORSNEDE OVER BRUG
(SECTION THRU DECKHOUSE)

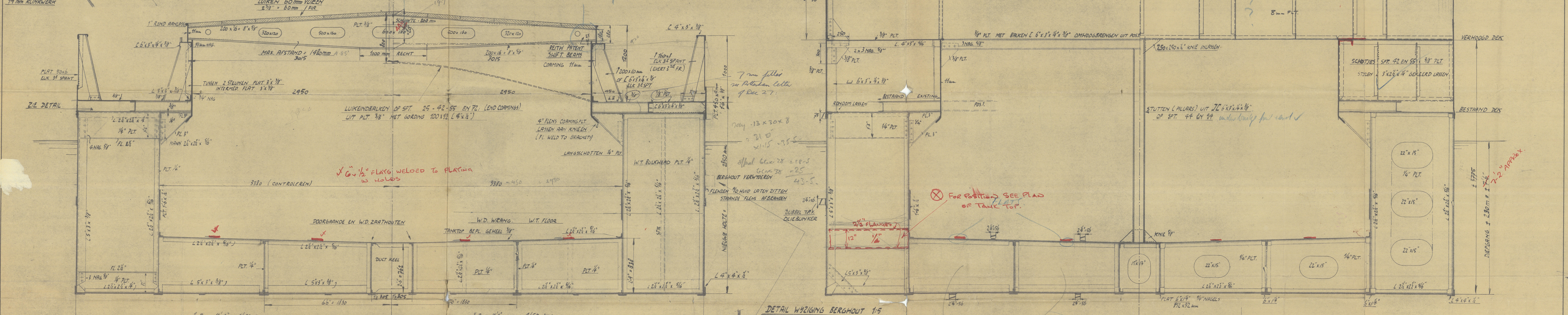
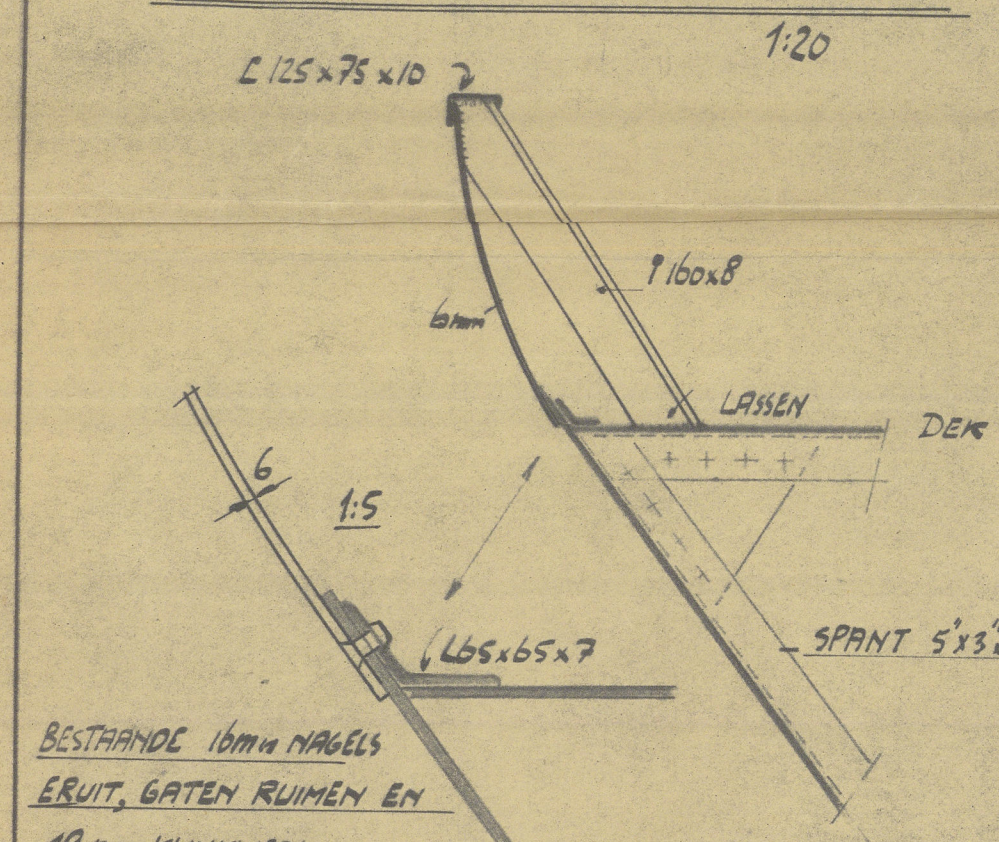
FRONTSCHOT 1/5 BRUG
(DECKHOUSE FRONT BULKHEAD)

ing. G. van Schrick J. Hoozen
Ged. P. de Koning 20
SLIKKERVEER
1:121. 1896

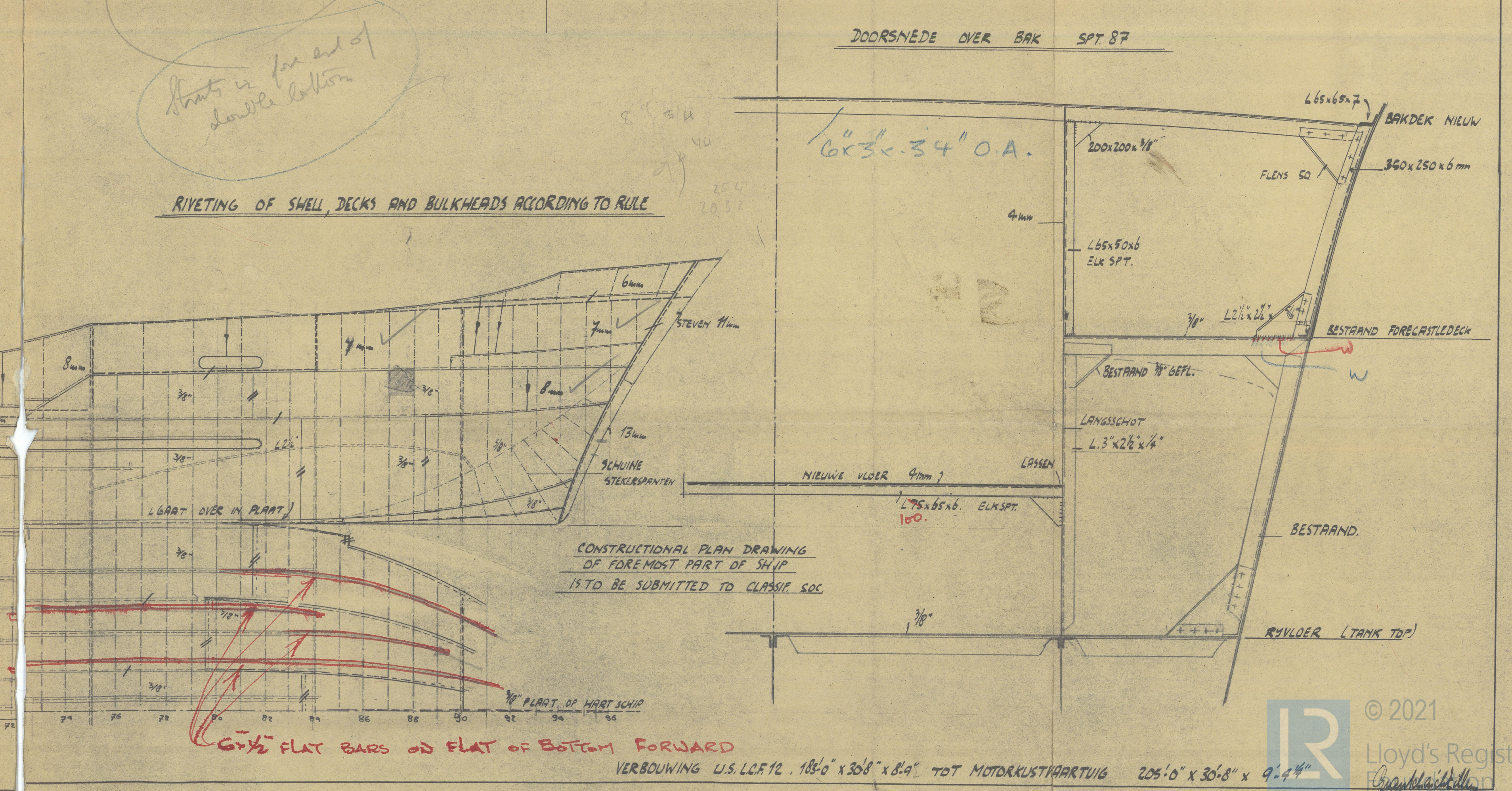
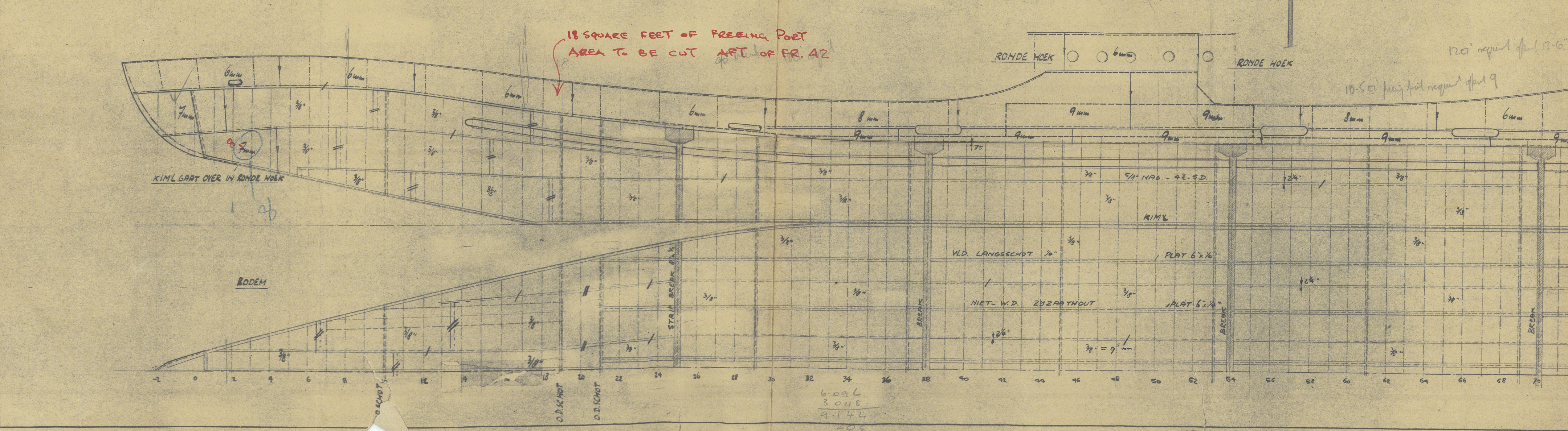
9 DEC 1947

Approved
11/12/47
J.L.A. Jank

CLASS BS (CASTING SERVICE)
Moulored Summer Draught
17'-2" approx
EQUIPMENT GRADE C17
Cubic Tonnage 475.



UITGESLAGEN HUID SCHAAL 1:75
EXPANDED SHELL - SCALE 1:75



1

Sections & Shell Expansion

U.S.N. L.C.F. (12) now Orca

"ORCA" ★ Rotterdam. 11.12.47.

RECORDS DEPT.,
LONDON

2

Sections & Shell Expansion
L.C.F. (12) Conversion

Rotterdam

9 - DEC 1947

Bag