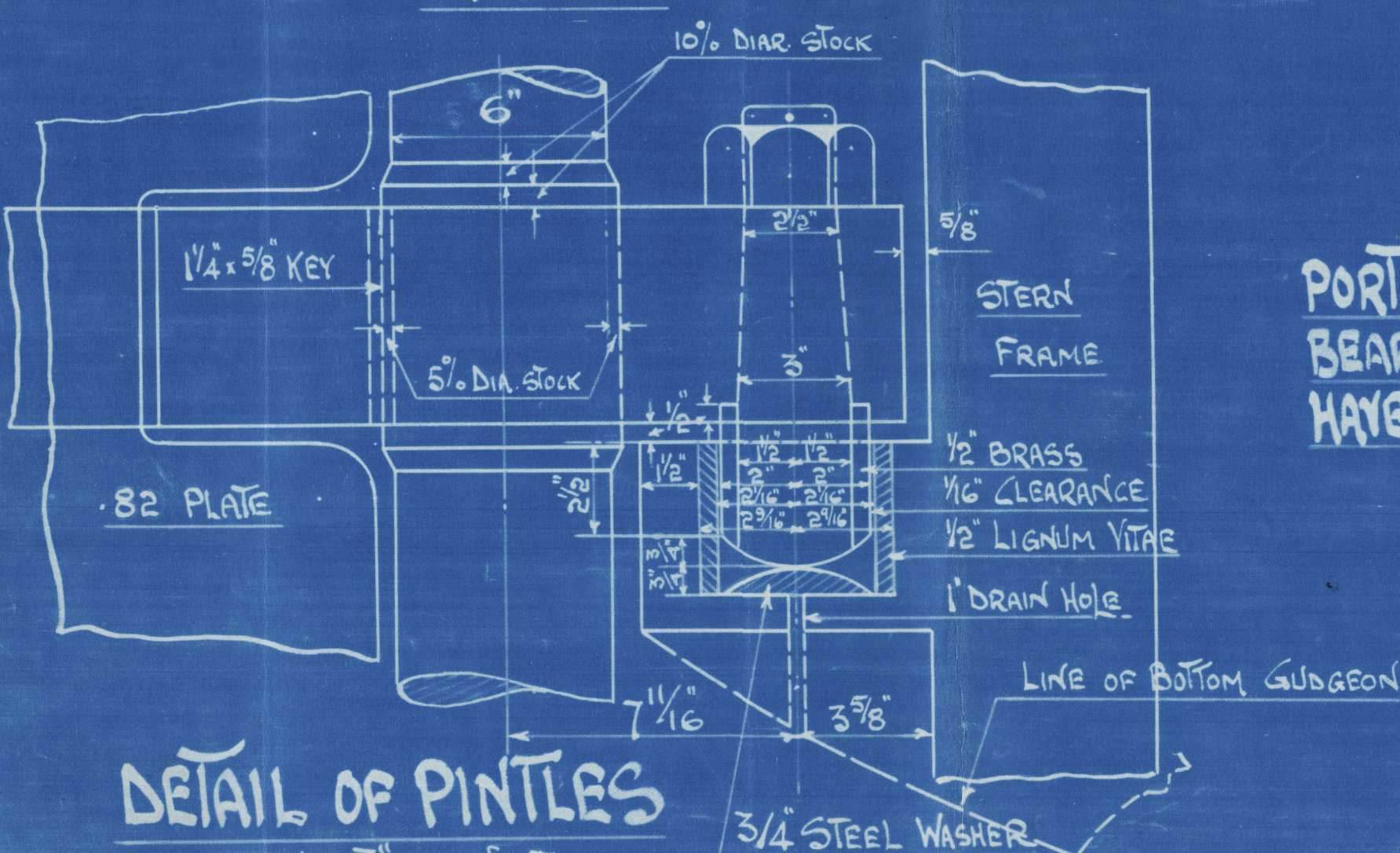
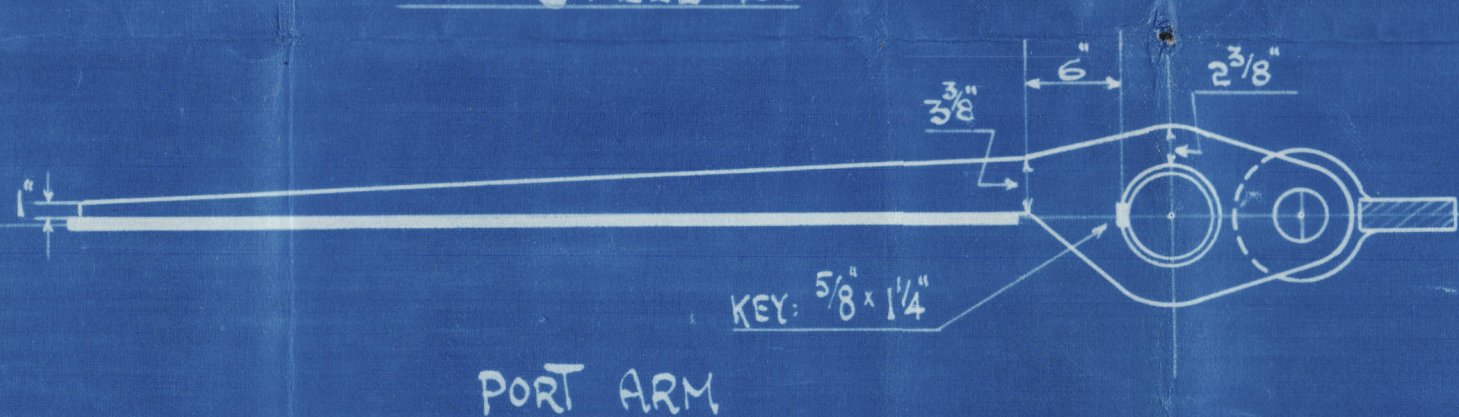
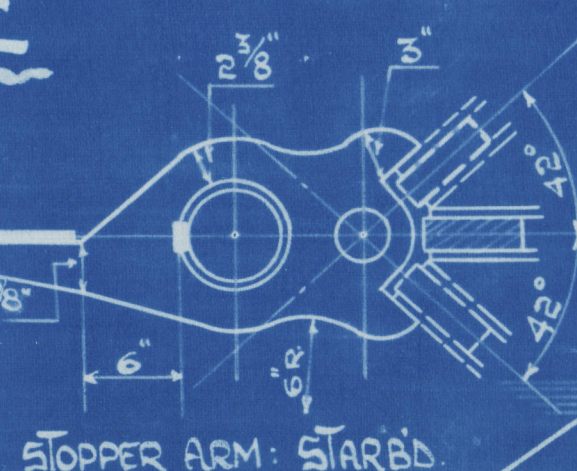
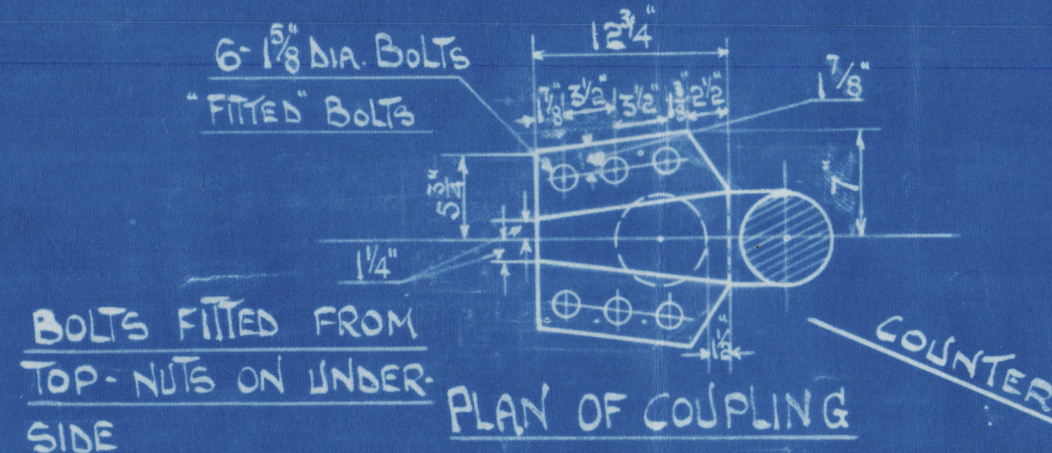


T.S.S. Nos 859m-860m RUDDER & STERNFRAME Scale: 1" = one foot

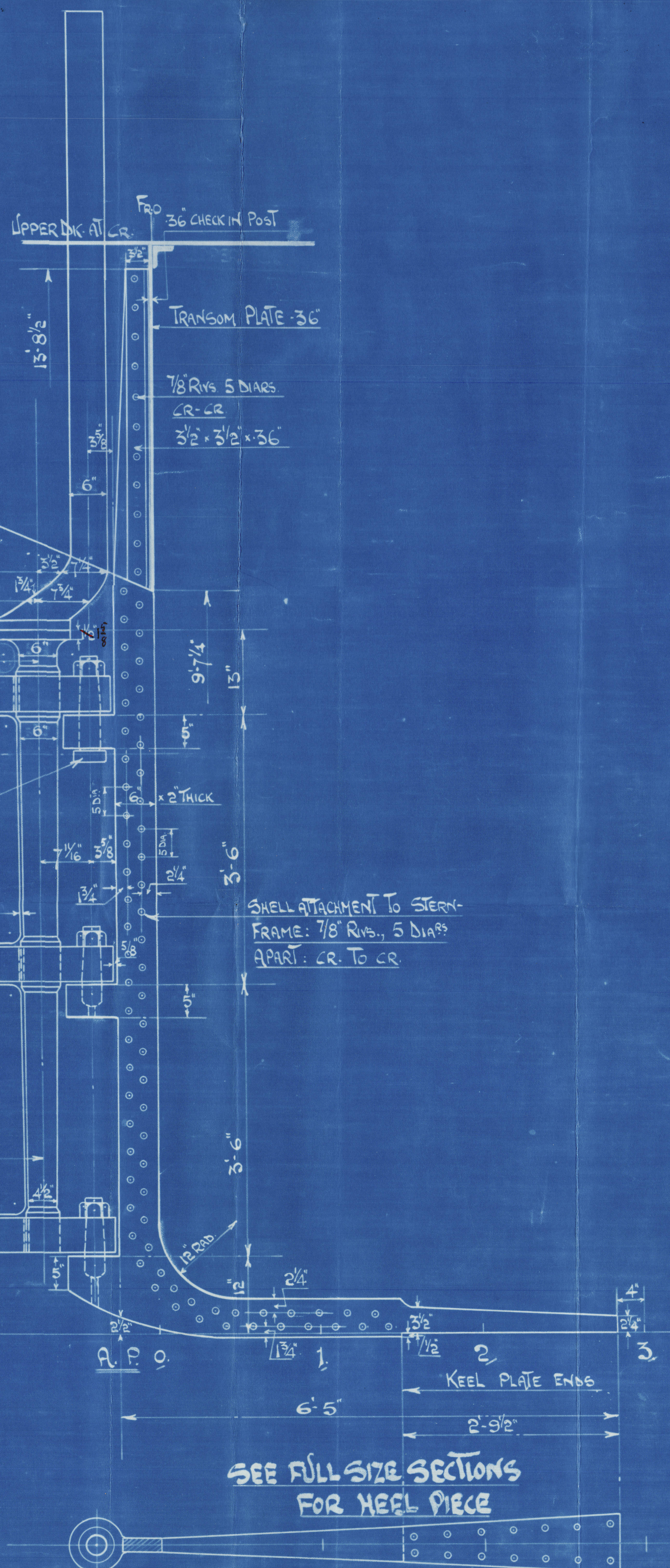
RUDDER PLATE: IRON
 MAINPIECE: FORGED IRON
 STERNFRAME: FORGED IRON
 ZINC PLATES ARRANGED IN WAY
 OF PROPELLERS

Drawn by: *[Signature]*
 Checked by: *[Signature]*
 Date: 24.12.28.



PORT ARM PINTLE & BOTTOM PINTLE
 BEARING. TOP PINTLE ONLY TO
 HAVE LOCKING HEAD.

A = 39.76; D = 3.2; A x D = 127.23.
 RUDDER HEAD: 6" DIA: MAINPIECE 6" DIA.
 SPEED OF VESSEL: 12 KNOTS (SERVICE)
 13 KNOTS (ON TRIALS)



RIVETS ATTACHING STERNFRAME
 TO KEEL: 1" DIA. SPACED 5 DIARS
 CR TO CR.
 DRILLED FROM SQUARE OFF OUTSIDE

APPROVED

Lloyd's Register
 26.1.29

D. & W. Henderson & Co. Ltd.

Nos. 859-860 M.

Rudder & Sternframe -
- Amended plan -

"Irwin"

GLASGOW REPORT No 49593

"Goschen"

GLASGOW REPORT No 49632



© 2021

Lloyd's Register
Foundation

010079-010088-0002