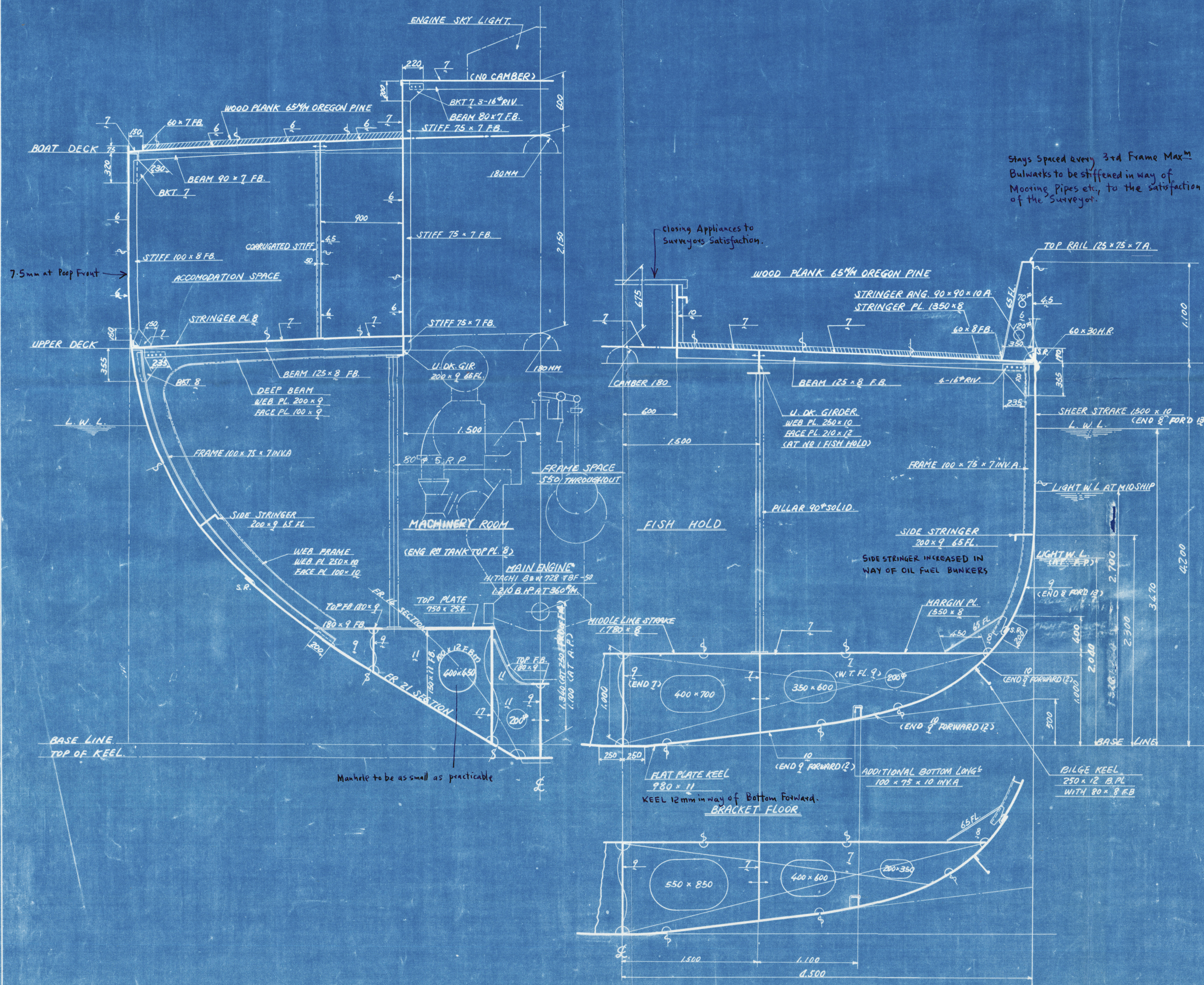


NOTE				
FEB 6TH 1959	FINISHED PLAN	MANUF. NO.	NO. WANTED	DATE
				REMARK

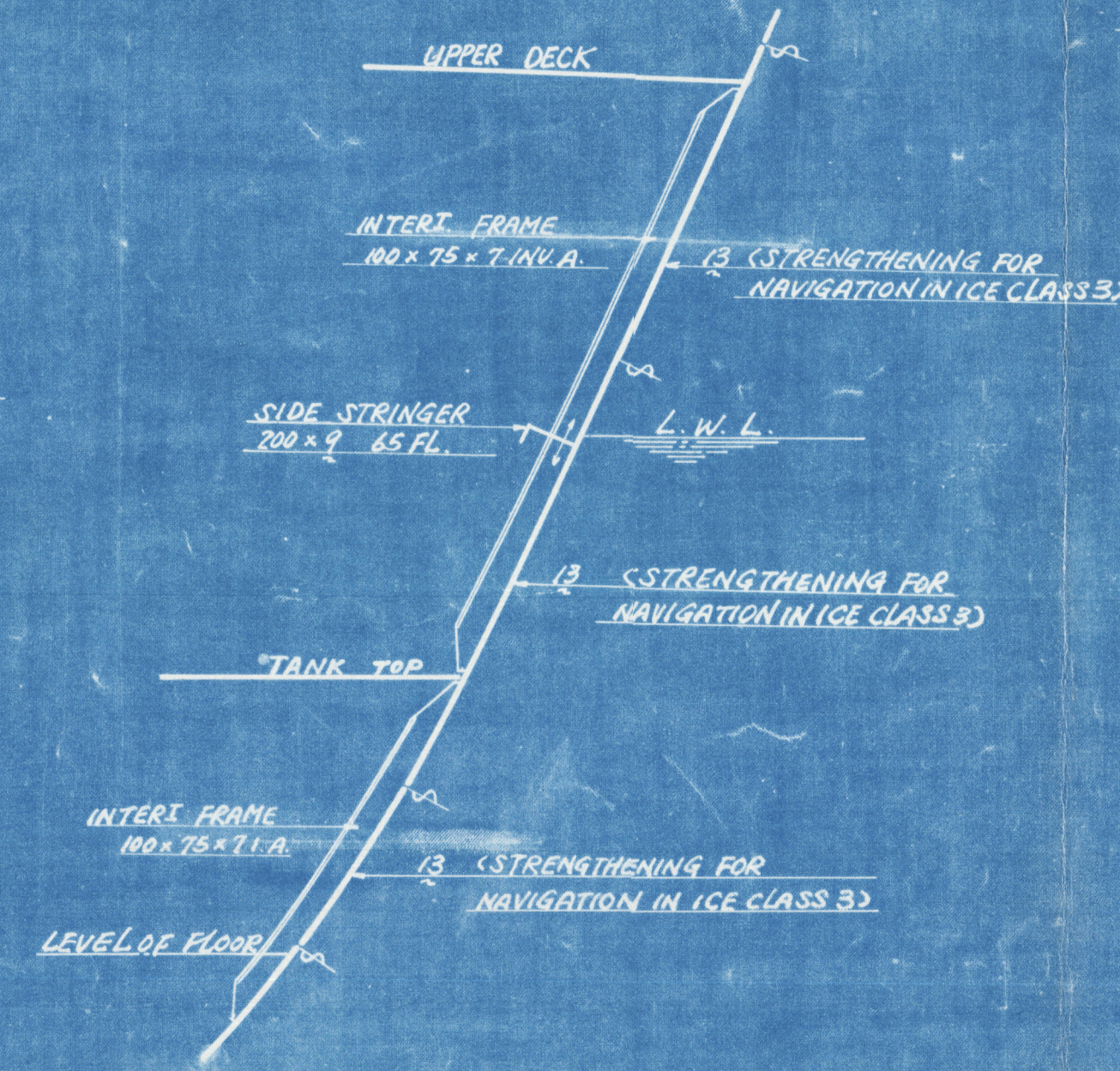


EQUIPMENT NUMERAL	
FOR HULL	
$L(B+d)+0.85L(D-d)$	
$= 47.00(9.00+3.47) + 0.85 \times 47.00(4.20-3.47)$	
$= 615.25$	
FOR SUPERSTRUCTURE	
$FCL 0.85(L \times h) = 0.85(12.36 \times 2.15) = 22.57$	
$POP 0.85(L \times h) = 0.85(13.70 \times 2.15) = 24.12$	
FOR ERECTION	
ON UPPER DECK	
$0.75(L \times h) = 0.75(6.60 \times 2.15) = 10.64$	
ON BOAT DECK	
$0.75(L \times h) = 0.75(4.95 \times 2.05) = 7.61$	
WHEEL HOUSE	
$0.75(L \times h) = 0.75(2.75 \times 2.15) = 4.43$	
TOTAL	684.62 (M ²)

Approved at 684.43 (M²)

EQUIPMENTS "A"		
BOWER ANCHOR (STOCKLESS)	600 kg	3
CHAIN CABLE	28.5 mm	355M
TOW LINE	STEEL WIRE (6x26) 20 mm	16.5M
	(BREAKING STRENGTH 16,580 kg)	
MOORING ROPE	WITH CIRCUMFERENCE 165 mm	2
	(BREAKING STRENGTH 5,180 kg)	

INTERMEDIATE FRAME
(STRENGTHENING FOR
NAVIGATION IN ICE CLASS 3)
90 x 8 F.B. FORWARD OF COLLISION BMR
100 x 75 x 7 I.A. AFTWARD OF COLLISION BMR



CERTIFIED COPY OF APPROVED PLAN	
PLACE OF APPROVAL KOBÉ	DATE 27/10/58
CERTIFIED BY W. H. Henschel	DATE 9/6/59.

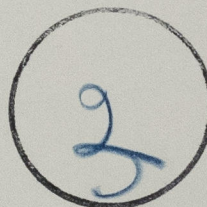
CLASS	
LLOYD'S REGISTER OF SHIPPING	100 A1
FISHING VESSEL	
STRENGTHENED FOR NAVIGATION IN ICE	CLASS 3
SCANTLINGS SUITABLE FOR A SUMMER MOULDED DRAFT OF 11' 4" 8" MEASURED ABOVE TOP OF KEEL	
PRINCIPAL DIMENSIONS	
LENGTH B.P.	47' 00" (15.24)
BREADTH MOULDED	9' 00" (2.74)
DEPTH MOULDED	4' 20" (1.28)
DESIGN DRAUGHT MOULDED	3' 47" (1.07)
SCANTLING DRAUGHT MOULDED	3' 50" (1.10)

Note: Items marked in ink on this as fitted drawing are as indicated on the original approved plan.

M.V. "DNESTR"

B/A	PART	NAME OF PART	MATERIAL	UNIT WEIGHT	REMARK
NO.	NO.			KG	
1		1/2 "SUDDOIMPORT" MOSCOW U.S.S.R.			
2		G.T. 500 TONS TUNA FISHING BOAT			
MIDSHIP SECTION					
SCALE 1/25					
HITACHI SHIPBUILDING & ENGINEERING CO. LTD.			DRAWN BY J. Sasaki		
MUKAISHIMA SHIPYARD			CHECKED BY M. Taniuchi		
DESIGNING SECTION			REVIEWED BY N. Kuroki		
DATE 27/10/58			CHIEF OF SECT. O. Yamaguchi		
MANUF. NO.			SHEET NO. FINAL 11		
CODE NO.			DRAWING NO.		

RECORDS DEPT.
LONDON.



Kobe Rpt. No.	FE 6518
Port of Survey	MUKAISHIMA
Name of Ship	"DNESTR"
Title of Plan.	MIDSHIP SECTION



© 2021

Lloyd's Register
Foundation

010089-010095-0122