

WESTHAV
36507.

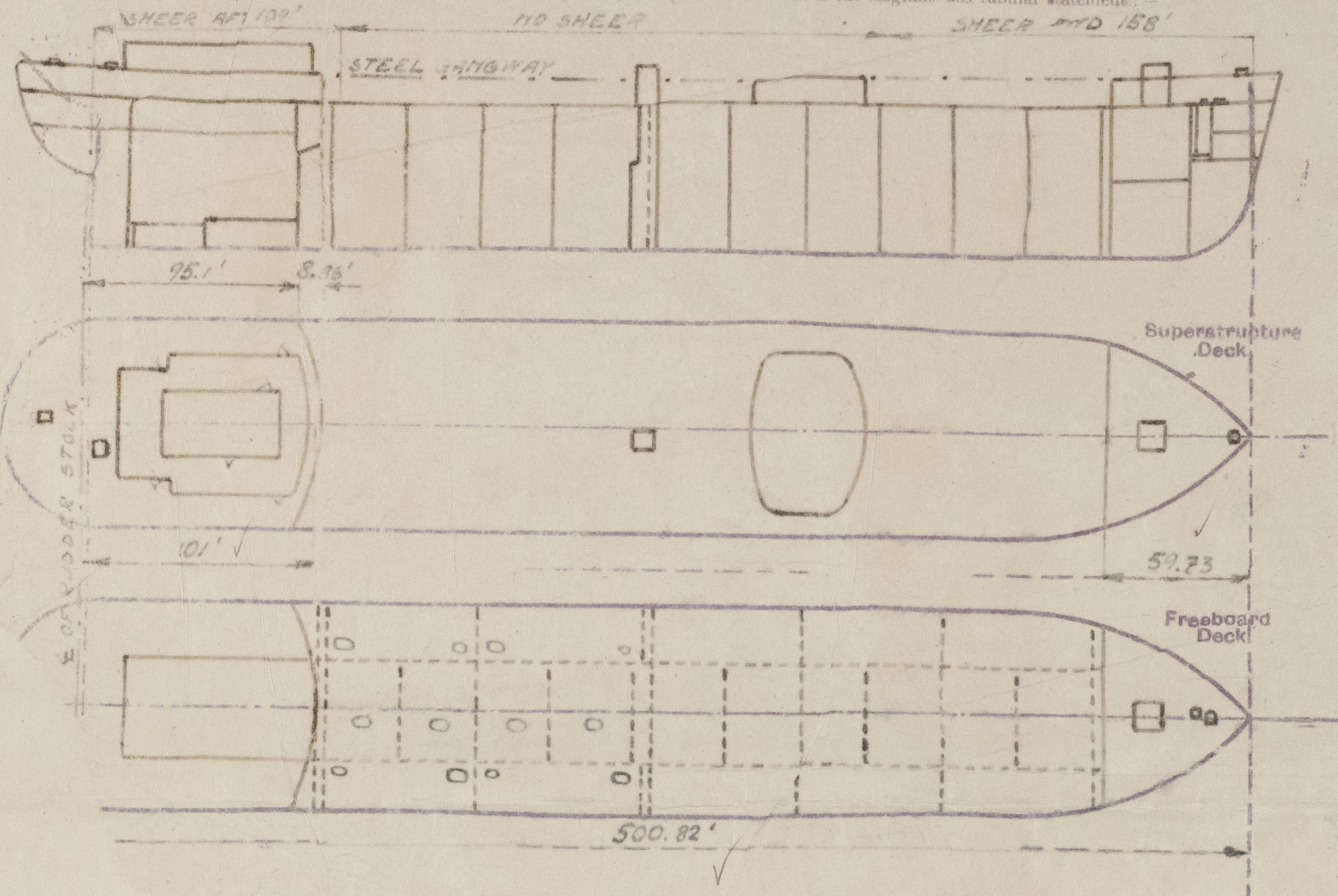
Rpt. No. 2019 A.

23 DEC 1941
3615

SURVEY FOR LLOYD'S REGISTER
(CONDITIONS OF ASSIGNMENT)

Ship's Name: M/T "KATHRINE STENERSEN"
Official Number: (No. mms yard No. 220)
Nationality and Port of Registry: Norwegian, Oslo.
Builder's Signature: Mahrre.
Date of Survey: Whilst building.

Disposition and arrangement of superstructures, trunks, casings and machinery casings to be inserted in the diagrams and tabular statement:



Particulars of Superstructures, Trunks, Casings, Deckhouses.

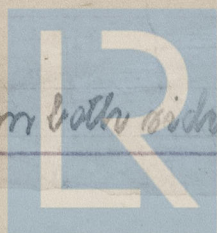
| | Coaming | Plating | Stiffeners | Spacing | End Attachments of Stiffeners | Size of Openings | Height of Sills | Height of Casings |
|------|-----------------------------------|----------------|-----------------------|-------------|-------------------------------|----------------------|-----------------|-------------------|
| Fore | to W. to dk. | 50 | 9 7/8 x 3 1/2 x 56 L | 31-32 | White top and bottom | None | ✓ | 7.75 |
| Mid | " " | 46 | 9 7/8 x 3 1/2 x 44 L | 32 | to W. to dk. bottom | None | ✓ | 7.75 |
| | to W. to dk. | 32 | 3 1/2 x 3 x 34 L | 29 1/2 - 28 | | 60.5 x 49 50 x 29 | 16 25 | 7.5 ✓ |
| | to W. to dk. | 32 | 3 1/2 x 2 1/2 x 32 L | 23 1/2 | to W. top | 54 x 33 | 48 | 9.75 ✓ |
| | the centre part of prop bulkhead! | | | | | | | |
| | | | 28-30 3 x 2 x 28-40 L | 32 | White top and bottom | None | ✓ | 4. ✓ |
| Deck | 6 x 3 x 32 S. | F. 32 S. 28 | 4 x 40 3 x 32 | 25-32 24 | ✓ | 41 x 25 | 18 | 7.5 ✓ |

Particulars of Closing Appliances (state if capable of being manipulated from both sides).

✓ No openings ✓

Reinforced W. S. at all doors, manipulated from both sides. (Pump rooms).
3/4" stiffening boards in welded chambers, full height. (Sole space).
Reinforced W. S. at all doors, manipulated from both sides. (Main pump room).

to, solid bulk doors, manipulated from both sides.



© 2021

Lloyd's Register
Foundation

010171-010178-0048 12

PARTICULARS OF PROTECTION TO OPENINGS, ETC.

| | | HATCHWAYS ON FREEBOARD AND SUPERSTRUCTURE DECKS. | | | | | | | |
|--|-------------------|--|---------------|---------------|---------------|---------------|---------------|---------------|---------------|
| Description of Hatchway | | Foreboard deck. | | Main deck. | | Tide deck. | | Poop deck. | |
| Dimensions of Hatchway | | Foreboard deck. | Main deck. | Main deck. | Tide deck. | Tide deck. | Tide deck. | Tide deck. | Tide deck. |
| GAMINGS | Height above Deck | 32 1/2" | 4" | 4 1/2" | 9" | 32 1/2" | 15" | 6" | 9" |
| | Thickness | 40" | 40" | 44" | 30" | 44" | 28" | 38" | 38" |
| | Stiffeners | 5" x 3" x 40" | | | 20" | 44" | 28" | 38" | 38" |
| | Brackets, Stays | | | | | 4" x 3" x 44" | | | |
| HATCH PLAMS | Number | | | | | | | | |
| | Spacing | | | | | | | | |
| FORE AND AFTERS | Number | | | | | | | | |
| | Spacing | | | | | | | | |
| HATCH COVERS | Material | | | | | | | | |
| | Thickness | 40" | 54" | 40" | 26" | 36" | 32" | 32" | 32" |
| HATCH COVERS | How fitted | 3" x 3" x 40" | 3" x 3" x 40" | 3" x 3" x 40" | 3" x 3" x 40" | 3" x 3" x 40" | 3" x 3" x 40" | 3" x 3" x 40" | 3" x 3" x 40" |
| | Bearing Surface | | | | | | | | |
| Spacing of Cleats | | 14"-16" | 17" | 4" | 12"-17" | | | 17"-20" | |
| Number of Tarps | | | | | | | | | |
| *Are wood fore and afters steel shod at all bearing surfaces? | | Yes. | | | | | | | |
| Are batten and wedges efficient and in good condition? | | Yes. | | | | | | | |
| Are tarpaulins in good condition and in accordance with rule requirements? | | Yes. | | | | | | | |
| Are lashings provided in accordance with rule requirements? | | Yes. | | | | | | | |

Particulars of any special features: — The model is longitudinally framed and all-welded.

Endorsement at first survey and at surveys for renewal of Certificate: —

The fittings and appliances are in accordance with the particulars shown on this form (or as now modified) and are in good condition.



© 2021

Lloyd's Register Foundation

None.

Particulars of Scuppers and Sanitary Discharge Pipes —

No scuppers below foreboard deck. ✓
Sanitary discharge pipes from poop deck house and from poop space are led overboard about 12" above 2nd deck (always accessible) and those from the bridge deck house led overboard above foreboard deck. All discharge pipes are fitted with storm valves and drain pipes from the poop space, also provided with non-detachable screw plugs at their inner ends. ✓

Particulars of Side Scuttles —

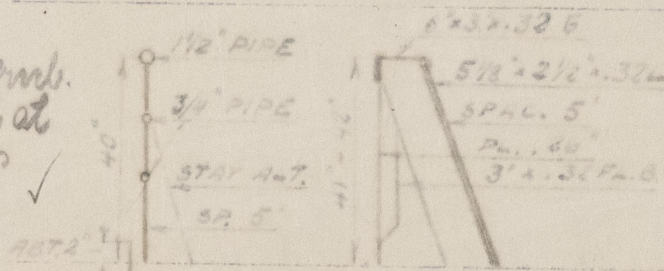
All side scuttles are of strong construction and fitted with hinged leadlights. ✓

Vertical distance of sill of lowest Side Scuttle above top of keel

About 43' ✓

Particulars of Guard Rails —

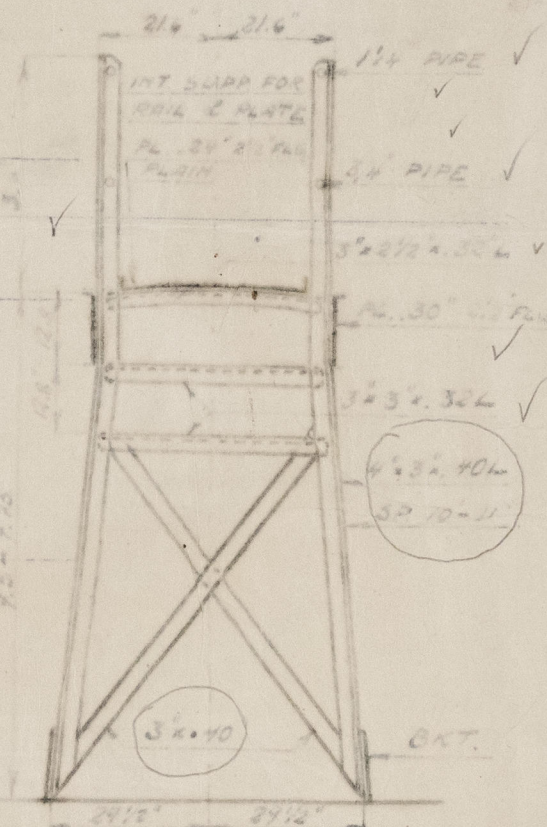
Bulwark at fore part of fore-
poop house. Open rail at
after part of fore- & poop
decks and on fore deck. ✓



Particulars of Gangways, Lifelines, etc. —

Same as
VESTHAV.

Any frame
aft bulwark?



Particulars of Freeing Arrangements.

| Length of Bulwark | Height of Bulwark | Size of Freeing Ports | Number each side | Area each side | Rule area each side |
|--|-------------------|---|------------------|----------------|--|
| None fore. 14 1/2' | 41" - 42" | | 3 x 3 = 9 | 17 0' | one open rails for half length of exposed portion of bulwark deck |
| Freeing port | (After Well) | From fore - 45' - 88' - 122'. Hgt above deck edge 2'. | | | |
| (Height above deck edge) | (Forward Well) | | | | |
| ports are fitted with shutters, bars, or rails, and give particulars of such — | | | | | |
| * less than standard. | | | | | |



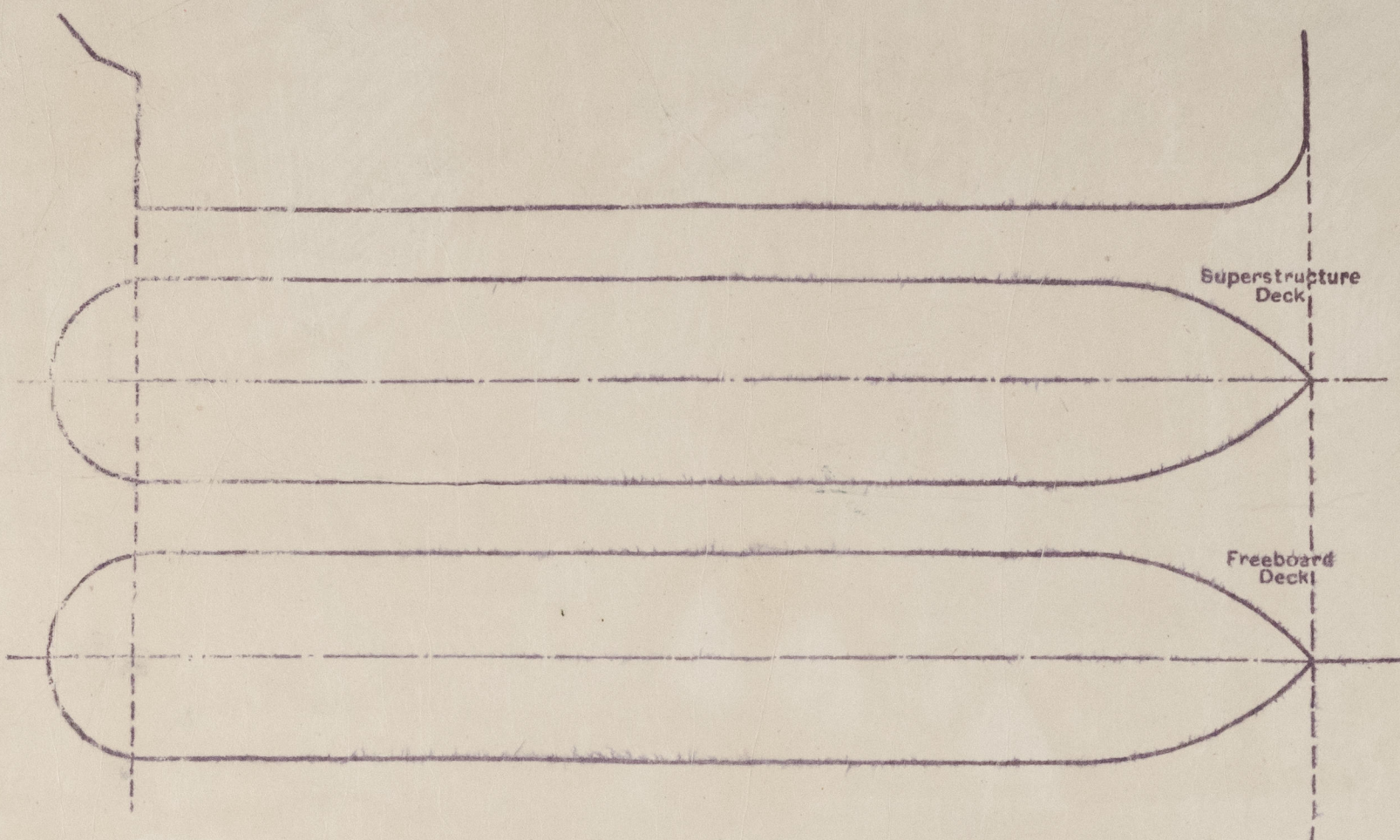
© 2021

Lloyd's Register
Foundation 2 1/2

010171-010178-00 48

PARTICULARS OF PROTECTION TO OPENINGS, ETC.

The following diagrams should be used to indicate the positions of cargo and coaling hatchways, gangways, cargo and coaling ports, ventilators, companionways, etc., which would affect the seaworthiness of the ship.



Particulars of fiddle, funnel and ventilator coamings, engine room skylight and other openings in machinery casing tops and their means of closing:—

Fiddle openings fitted with hinged steel covers. ✓
Funnel plating thickness .20" ✓
Vent. coamings Diam. 24"-36" Thickness .20"-.26" Height 4'-8'6". ✓

Particulars of Flush Bunker Scuttles:— *None* ✓

Particulars of Companionways:— *At sides of poop deck house. Door openings 61" x 25". Height of sill above steel deck 18". 2" solid bulk doors, manov. from both sides. ✓*

Particulars of Ventilators in exposed positions on freeboard and superstructure decks:—

Poop deck: Diam. 6'-9" x 12". Thickness .34"-.38". Height 31". ✓
Side deck: Diam. 12". Thickness .40". Height 36". ✓
Fore deck: Driveline posts of strong construction. ✓
All vent. coamings are connected to deck plating by means of electric welding and all are provided with means for closing. ✓

Types in exposed positions on freeboard, raised quarter, or superstructure decks:—

Garboard 30"-32" in height. ✓
" 30"-32" " " ✓
" 7'-9" high (flanged). ✓
ided with means for closing. ✓