

AMERICAN BUREAU OF SHIPPING

APPOINTED BY THE DEPARTMENT OF COMMERCE TO ASSIGN LOAD LINES UNDER THE PROVISIONS OF THE ACT OF MARCH 2, 1929.

FREEBOARD ASSIGNMENT

OFFICIAL No.	NAME OF VESSEL	PORT OF REGISTRY
219,477 (U.S.)	SS "ABERCOS" <i>now new Asia</i>	--
CENTER OF DISC below the top of Steel Upper deck line		Feet 8 Inches 2
MAXIMUM LOAD LINE in Tropical Fresh Water, above the center of Disc		1 1-3/4
" " in Fresh Water, above the center of Disc		- 7-1/4
" " in Tropical Zones, above the center of Disc		- 6-1/2
" " in Summer, on the center of Disc		- -
" " in Winter, below the center of Disc		- 6-1/2
" " in Winter, North Atlantic, below the center of Disc		- -

NOTE:—Top of Wood deck is the line of wood deck carried out to ship's side on same camber as beam.
Top of Steel deck is top of stringer plate at ship's side.

NEW YORK, December 13, 1940

Sir. R. Roper & Company,

Gentlemen:

I am directed to inform you that your application for a Certificate of Approval of the position of a Load Line Disc under the provisions of the Load Line Act of March 2, 1929, for the above-mentioned vessel, has received consideration, and I am to advise you that a recommendation has been placed before the Committee that they should approve of the position of such Disc if placed as noted above, subject to

Please state when and at what Port the Disc will be marked upon the vessel's sides, in order that the Surveyors to this Bureau may verify the marking, and that the necessary Certificate of Approval may be issued.

Yours very truly,

(Sgd) J. W. Cantillion

Secretary

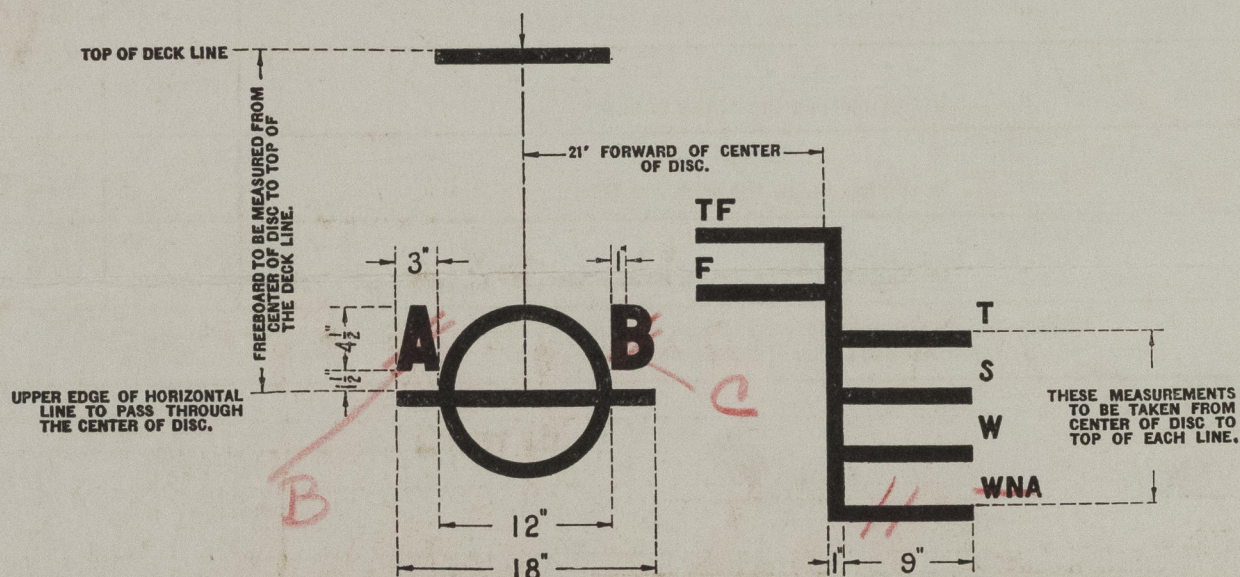
(Sgd) D. Arnett

Chief Surveyor.

(SEE OTHER SIDE)

STEAMSHIP.

DIRECTIONS FOR MARKING DISC ON SIDES.



The Center of Disc to be placed on both sides of vessel at the middle of the length on the load line. The disc and lines must be permanently marked by center punch marks or chisel, and the particulars given in the Load Line Certificate are to be entered in the official log.

The markings shown are for the starboard side; on the port side the markings are to be similar, and forward of disc.

The letters A B	signify	American Bureau of Shipping.
" T F	"	Tropical Fresh Water Allowance.
" F	"	Fresh Water Allowance.
" T	"	Load Line in Tropical Zones.
" S	"	Summer Load Line.
" W	"	Winter Load Line.
" W N A	"	Winter North Atlantic Load Line.



© 2021

Lloyd's Register
Foundation