

U.S. RULES

ITEM	QTY	W.P.
1. SHELL	212	212
2. UPPER HEAD	244	244
3. LOWER HEAD	212	212
4. WING TUBE SHEET	212	212
5. WING FLANGE	212	212
6. WING WRAPPER	212	212
7. CROWN SHEET	212	212
8. CROWN WRAPPER	212	212
9. CROWN FLANGE	212	212
10. CROWN PLATE	212	212
11. CROWN RIB	212	212
12. CROWN RIB	212	212
13. CROWN RIB	212	212
14. CROWN RIB	212	212
15. CROWN RIB	212	212
16. CROWN RIB	212	212
17. CROWN RIB	212	212
18. CROWN RIB	212	212
19. CROWN RIB	212	212
20. CROWN RIB	212	212
21. CROWN RIB	212	212
22. CROWN RIB	212	212
23. CROWN RIB	212	212
24. CROWN RIB	212	212
25. CROWN RIB	212	212
26. CROWN RIB	212	212
27. CROWN RIB	212	212
28. CROWN RIB	212	212
29. CROWN RIB	212	212
30. CROWN RIB	212	212
31. CROWN RIB	212	212
32. CROWN RIB	212	212
33. CROWN RIB	212	212
34. CROWN RIB	212	212
35. CROWN RIB	212	212
36. CROWN RIB	212	212
37. CROWN RIB	212	212
38. CROWN RIB	212	212
39. CROWN RIB	212	212
40. CROWN RIB	212	212
41. CROWN RIB	212	212
42. CROWN RIB	212	212
43. CROWN RIB	212	212
44. CROWN RIB	212	212
45. CROWN RIB	212	212
46. CROWN RIB	212	212
47. CROWN RIB	212	212
48. CROWN RIB	212	212
49. CROWN RIB	212	212
50. CROWN RIB	212	212
51. CROWN RIB	212	212
52. CROWN RIB	212	212
53. CROWN RIB	212	212
54. CROWN RIB	212	212
55. CROWN RIB	212	212
56. CROWN RIB	212	212
57. CROWN RIB	212	212
58. CROWN RIB	212	212
59. CROWN RIB	212	212
60. CROWN RIB	212	212
61. CROWN RIB	212	212
62. CROWN RIB	212	212
63. CROWN RIB	212	212
64. CROWN RIB	212	212
65. CROWN RIB	212	212
66. CROWN RIB	212	212
67. CROWN RIB	212	212
68. CROWN RIB	212	212
69. CROWN RIB	212	212
70. CROWN RIB	212	212
71. CROWN RIB	212	212
72. CROWN RIB	212	212
73. CROWN RIB	212	212
74. CROWN RIB	212	212
75. CROWN RIB	212	212
76. CROWN RIB	212	212
77. CROWN RIB	212	212
78. CROWN RIB	212	212
79. CROWN RIB	212	212
80. CROWN RIB	212	212
81. CROWN RIB	212	212
82. CROWN RIB	212	212
83. CROWN RIB	212	212
84. CROWN RIB	212	212
85. CROWN RIB	212	212
86. CROWN RIB	212	212
87. CROWN RIB	212	212
88. CROWN RIB	212	212
89. CROWN RIB	212	212
90. CROWN RIB	212	212
91. CROWN RIB	212	212
92. CROWN RIB	212	212
93. CROWN RIB	212	212
94. CROWN RIB	212	212
95. CROWN RIB	212	212
96. CROWN RIB	212	212
97. CROWN RIB	212	212
98. CROWN RIB	212	212
99. CROWN RIB	212	212
100. CROWN RIB	212	212

LYOYD'S RULES

ITEM	QTY	W.P.
1. SHELL	212	212
2. UPPER HEAD	244	244
3. LOWER HEAD	212	212
4. WING TUBE SHEET	212	212
5. WING FLANGE	212	212
6. WING WRAPPER	212	212
7. CROWN SHEET	212	212
8. CROWN WRAPPER	212	212
9. CROWN FLANGE	212	212
10. CROWN PLATE	212	212
11. CROWN RIB	212	212
12. CROWN RIB	212	212
13. CROWN RIB	212	212
14. CROWN RIB	212	212
15. CROWN RIB	212	212
16. CROWN RIB	212	212
17. CROWN RIB	212	212
18. CROWN RIB	212	212
19. CROWN RIB	212	212
20. CROWN RIB	212	212
21. CROWN RIB	212	212
22. CROWN RIB	212	212
23. CROWN RIB	212	212
24. CROWN RIB	212	212
25. CROWN RIB	212	212
26. CROWN RIB	212	212
27. CROWN RIB	212	212
28. CROWN RIB	212	212
29. CROWN RIB	212	212
30. CROWN RIB	212	212
31. CROWN RIB	212	212
32. CROWN RIB	212	212
33. CROWN RIB	212	212
34. CROWN RIB	212	212
35. CROWN RIB	212	212
36. CROWN RIB	212	212
37. CROWN RIB	212	212
38. CROWN RIB	212	212
39. CROWN RIB	212	212
40. CROWN RIB	212	212
41. CROWN RIB	212	212
42. CROWN RIB	212	212
43. CROWN RIB	212	212
44. CROWN RIB	212	212
45. CROWN RIB	212	212
46. CROWN RIB	212	212
47. CROWN RIB	212	212
48. CROWN RIB	212	212
49. CROWN RIB	212	212
50. CROWN RIB	212	212
51. CROWN RIB	212	212
52. CROWN RIB	212	212
53. CROWN RIB	212	212
54. CROWN RIB	212	212
55. CROWN RIB	212	212
56. CROWN RIB	212	212
57. CROWN RIB	212	212
58. CROWN RIB	212	212
59. CROWN RIB	212	212
60. CROWN RIB	212	212
61. CROWN RIB	212	212
62. CROWN RIB	212	212
63. CROWN RIB	212	212
64. CROWN RIB	212	212
65. CROWN RIB	212	212
66. CROWN RIB	212	212
67. CROWN RIB	212	212
68. CROWN RIB	212	212
69. CROWN RIB	212	212
70. CROWN RIB	212	212
71. CROWN RIB	212	212
72. CROWN RIB	212	212
73. CROWN RIB	212	212
74. CROWN RIB	212	212
75. CROWN RIB	212	212
76. CROWN RIB	212	212
77. CROWN RIB	212	212
78. CROWN RIB	212	212
79. CROWN RIB	212	212
80. CROWN RIB	212	212
81. CROWN RIB	212	212
82. CROWN RIB	212	212
83. CROWN RIB	212	212
84. CROWN RIB	212	212
85. CROWN RIB	212	212
86. CROWN RIB	212	212
87. CROWN RIB	212	212
88. CROWN RIB	212	212
89. CROWN RIB	212	212
90. CROWN RIB	212	212
91. CROWN RIB	212	212
92. CROWN RIB	212	212
93. CROWN RIB	212	212
94. CROWN RIB	212	212
95. CROWN RIB	212	212
96. CROWN RIB	212	212
97. CROWN RIB	212	212
98. CROWN RIB	212	212
99. CROWN RIB	212	212
100. CROWN RIB	212	212

3 MAR 1941

210 W.P.

BOILER TO PASS

U.S. STEAMBOAT INSPECTION

AND LLOYD'S REGISTER AND AMERICAN BUREAU

315* TEST PRESSURE - U.S. RULES

315* TEST PRESSURE - LLOYD'S RULES

315* TEST PRESSURE - AMERICAN BUREAU RULES

HEATING SURFACE

TUBES 2194 Sq. Ft.

FURNACES 235 "

COMB. CHRS. 275 "

TOTAL - 2704 Sq. Ft.

MATERIAL:

PLATES - STEEL - SHELLS, BUTT

STRAPS MARINE ST. 60000 PSI T.S.

CROWN BARS FLANGE ST. 50000 PSI T.S.

ALLOTTED PLATES AND FURNACES 54000 PSI T.S.

RIVETS STEEL RIVET QRS 50000 PSI T.S.

STAY BOLTS TESTED VERT. HORIZ. - 40000 PSI T.S.

NOTE: ALL STAY BOLTS TO HAVE 1/2" DRILLED HOLE IN EACH END OF BUTT HOLE TO PROTECT BEYOND SHEET SUPPORTED.

NOTE: RIVET HOLES DRILLED 1/8" LARGER THAN RIVET IN PLATES THAT ARE FLAT WHEN FINISHED. SHELL - ROUNDABOUT SEAMS DRILLED 1/8" IN FLAT PLATE EXCEPT UNDER BUTT STRAPS - HOLES UNDER BUTT STRAPS DRILLED FULL SIZE FROM BUTT STRAP IN PLATE.

1941 - 1942 O. SCOTCH MARINE BOILER

WILLAMETTE IRON AND STEEL WORKS

PORTLAND, OREGON

1941 - 1942 O. SCOTCH MARINE BOILER

WILLAMETTE IRON AND STEEL WORKS

PORTLAND, OREGON

5

TRANSFERRED TO:
L. R. SYSTEM

Boiler

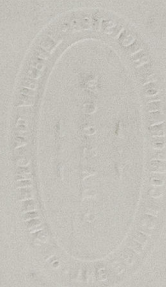
Novelty
ex

EMPIRE PTARMIGAN

now new Asia

" " KINGFISHER

TRANSFERRED TO:
L. R. SYSTEM



Boiler

COAXET
&

ABERCOS

010208-010218-0145



© 2021

Lloyd's Register
Foundation