

INIS
INTATA
LOSANGI
INDARI

Lloyd's Register of Shipping.

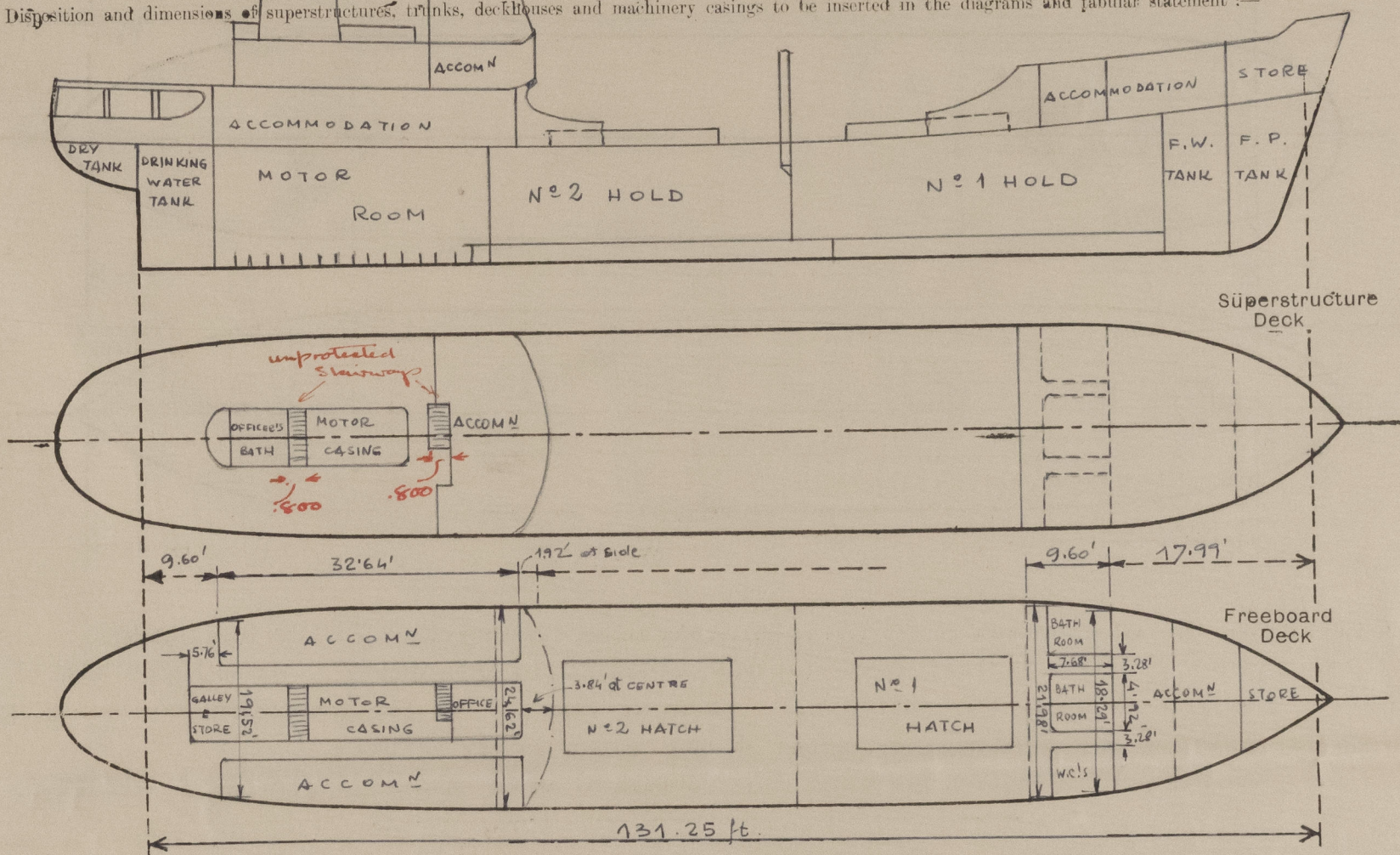
SURVEYS FOR FREEBOARD.

(CONDITIONS OF ASSIGNMENT.)

26 JUN 1953

Ship's Name "INDARI" Port of Survey TRIESTE
 Official Number ✓ Surveyor's Signature Alex M Hopkins
 Nationality and Port of Registry INDONESIAN DJAKARTA Date of Survey DURING CONSTRUCTION

Disposition and dimensions of superstructures, trunks, deckhouses and machinery casings to be inserted in the diagrams and tabular statement:—



Particulars of Superstructures, Trunks, Casings, Deckhouses.

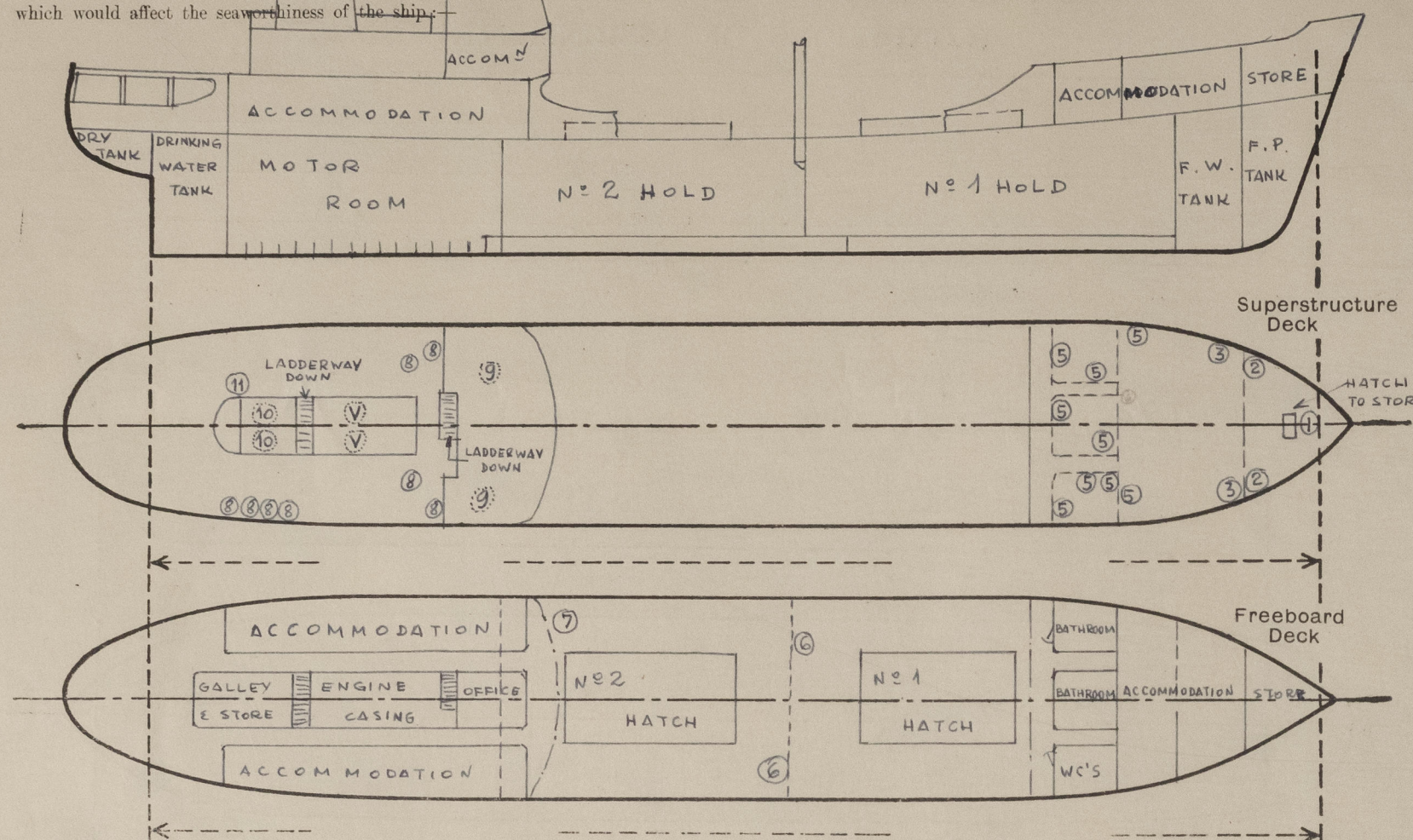
	Coaming	Plating	Stiffeners	Spacing	End Attachments of Stiffeners	Size of Openings	Height of Sills	Height of Casings
Poop Bulkhead	6 $\frac{1}{2}$ "	5 $\frac{1}{2}$ "	50x4 $\frac{1}{2}$ " flats	650 $\frac{1}{2}$ "	WELDED TOP E BOTTOM	✓	✓	2100 $\frac{1}{2}$ "
Raised Quarter Deck Bulkhead ...			✓					
Bridge, After Bulkhead			✓					
Bridge, Forward Bulkhead			✓					
Forecastle Bulkhead (WITH RECESSES).	5 $\frac{1}{2}$ "	4.5 $\frac{1}{2}$ "	50x4 $\frac{1}{2}$ " flats	500 $\frac{1}{2}$ "	WELDED TOP E BOTTOM	2 @ 600 x 1900 2 @ 650 x 1900	320 $\frac{1}{2}$ "	2100 $\frac{1}{2}$ "
Trunk, Aft								
Trunk, Forward								
Exposed Machinery Casings on Freeboard or Raised Quarter Decks ...	5 $\frac{1}{2}$ "	5 $\frac{1}{2}$ "	70x5.5 flats	585 $\frac{1}{2}$ "	WELDED TOP E BOTTOM	2 @ 700 x 1300	610 $\frac{1}{2}$ "	2100 $\frac{1}{2}$ "
Exposed Machinery Casings on Superstructure Decks	5 $\frac{1}{2}$ "	4 $\frac{1}{2}$ "	50x5 $\frac{1}{2}$ " flats	585 $\frac{1}{2}$ "	WELDED TOP E BOTTOM	✓	✓	2100 $\frac{1}{2}$ "
Machinery Casings within Superstructures not fitted with Class I Closing Appliances			NONE					
Deckhouses on Flush Deck Ships ...			NONE					

Particulars of Closing Appliances (state if capable of being manipulated from both sides).

Poop Bulkhead	OPEN POOP
Raised Quarter Deck Bulkhead ...	✓
Bridge, After Bulkhead	✓
Bridge, Forward Bulkhead	✓
Forecastle Bulkhead	WOOD DOORS CAPABLE OF BEING OPERATED FROM BOTH SIDES
Exposed Machinery Casings on Freeboard or Raised Quarter Decks ...	STEEL HINGED DOORS CAPABLE OF BEING OPERATED FROM BOTH SIDES
Exposed Machinery Casings on Superstructure Decks	✓
Machinery Casings within Superstructures not fitted with Class I Closing Appliances	✓
Deckhouses on Flush Deck Ships ...	✓

PARTICULARS OF PROTECTION TO OPENINGS, ETC.

The following diagrams should be used to indicate the positions of cargo and coaling hatchways, gangway, cargo and coaling ports, ventilators, companionways, etc., which would affect the seaworthiness of the ship.



Particulars of filley, funnel and ventilator coamings, engine room skylight and other openings in machinery casing tops and their means of closing:—

MOTOR CASING OF STRONG STEEL CONSTRUCTION, EFFICIENTLY STIFFENED, 2100^{mm} ABOVE POOP DECK
 FUNNEL STEPPED DIRECTLY ON CASING TOP. ENGINE ROOM & GALLEY SKYLIGHTS ON CASING TOP OF
 STRONG CONSTRUCTION WITH HINGED STEEL FLAPS EFFICIENTLY SECURED.
 VENTILATORS - 2 @ 500^{mm} DIA x 5^{mm} THICK x 1350^{mm} ABOVE CASING TOP, EFFICIENTLY SUPPORTED.

Particulars of Flush Bunker Scuttles:—

NONE

Particulars of Companionways:—

NONE

Particulars of Ventilators in exposed positions on freeboard and superstructure decks:—

DIST. NUMBER	Nº	M/M DIA	M/M THK	M/M HGT	POSITION	LEADING TO
1	1	200	7.5	965	F'CLE DECK	BOSUN'S STORE
2	2	200	6.4	460	"	"
3	2	200	7.5	965	"	CREW'S ACCOM.
4	1	300	8.5	965	"	HOLD Nº1
5	9	200	5.0	300	M.V. "	CREW'S ACC. W.C. ETC.
6	2	300	8.5	965	MAIN DECK	HOLD'S Nº1 & 2
7	1	300	8.5	965	"	HOLD Nº2
8	8	200	5.0	300	M.V. POOP DECK	ACCOMMODATION
9	2	200	5.0	300	M.V. BRIDGE DECK	"
10	2	200	5.0	300	M.V. CASING TOP	OFFICER'S BATH
11	1	200	6.4	460	POOP DECK	GALLEY

VENTILATORS EFFICIENTLY SUPPORTED AS REQUIRED
 COWL VENTILATORS SUPPLIED WITH WOOD PLUGS AND CANVAS COVERS
 G.N. VENTS SUPPLIED WITH HINGED STEEL W.T. COVERS

Particulars of Air Pipes in exposed positions on freeboard, raised quarter, or superstructure decks:—

Nº	POSITION	M/M SIZE	LEADING TO
1	FORECASTLE DECK	73 x 83	FORE PEAK TANK
2	"	60 x 70	F.W. TANK
2	"	60 x 70	Nº1 D.B. TANK
2	MAIN DECK	73 x 83	Nº2 D.B. TANK
2	"	47 x 57	COPPERDAM
2	"	73 x 83	Nº3 D.B. TANK
2	"	73 x 83	Nº4 D.B. TANK
2	POOP DECK	60 x 70	DRINKING WATER TANK
1	MAIN DECK	47 x 57	RUBBER TRUNK
1	"	47 x 57	DRY TANK AFT.

AIR PIPES TO OIL TANKS FITTED WITH PERFORATED PLATES AND HINGED COVERS
 REMAINDER OF AIR PIPES FITTED WITH HINGED COVERS
 ALL HINGED COVERS SECURED BY SPRING CLIPS
 AIR PIPES 315^{mm} HIGH ON MAIN DECK AND 460^{mm} HIGH ON POOP AND FORECASTLE DECKS

Particulars of Gangway Cargo and Coaling Ports:—

Indari. 26 JUN 1953

Particulars of Scuppers and Sanitary Discharge Pipes:—

SCUPPERS FROM POOP & FORECASTLE DECK DRAIN ON FREEBOARD DECK. FREEBOARD DECK
 SCUPPERS 64^{mm} DIA, 5 IN Nº (PES) DRAIN DIRECTLY OVER BOARD / AT LOWER ENDS
 SCUPPERS FROM CREW'S QUARTERS DISCHARGE TO MOTOR ROOM BILGE WITH SELF CLOSING COCKS
 ALL SANITARY DISCHARGES ARE FROM SPACES ABOVE FREEBOARD DECK AND DISCHARGE TO A
 COLLECTOR PIPE WITH NON RETURN VALVE AT SHIPS SIDE ABOVE L.W.L.

Particulars of Side Scuttles:—

SIDE SCUTTLES FITTED ON SHELL IN WAY OF FORECASTLE AND POOP OF BRASS STRONGLY
 CONSTRUCTED AND FITTED WITH HINGED DEADLIGHTS

Vertical distance of Sill of lowest Side Scuttle above top of keel 4.5 metres

Particulars of Guard Rails:—

GUARD RAILS ON FORECASTLE DECK 1000^{mm} HIGH, 4 RAILS
 STANCHIONS SPACED 1500^{mm} APART

Particulars of Gangways, Lifelines, etc.:—

LIFELINES PROVIDED (P. AND S.) FROM FORECASTLE TO POOP

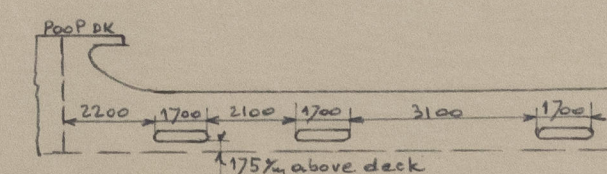
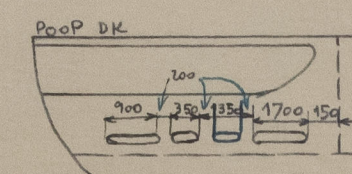
Particulars of Freeing Arrangements.

	Length of Bulwark	Height of Bulwark	Size of Freeing Ports	Number each side	Area each side	Rule area each side
After Well ...	5.90 m	1100 ^{mm}	1 @ 1700 x 250 ^{mm} 1 @ 900 x 250 ^{mm} 2 @ 350 x 250 ^{mm}	FOUR	792 m ²	783 m ²
Forward Well ...	18.72 m 19.30 m	1100 ^{mm}	1700 x 250 ^{mm}	THREE	1236 m ²	1192 m ²

State position of each freeing port ... { After Well:—
 (F. and A. position and height above deck edge) { Forward Well:— } SEE SKETCH

State whether the freeing ports are fitted with shutters, bars, or rails, and give particulars of such:— VERTICAL BARS 3 IN Nº, SPACED 125^{mm} APART

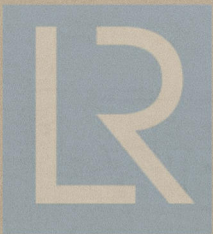
Additional area where sheer is less than standard.



PARTICULARS OF PROTECTION TO OPENINGS, ETC.

HATCHWAYS ON FREEBOARD AND SUPERSTRUCTURE DECKS.									
		← MAIN DECK →		FORE DECK					
		Nº 1	Nº 2	HATCH TO STORE					
Description of Hatchway	...	CARGO	CARGO						
Dimensions of Hatchway	...	5850	3500	585 x 800					
COAMINGS	Height above Deck	...	900 mm	610 mm					
	Thickness	Sides	10 mm	7 mm					
		Ends	10 mm	7 mm					
	Stiffeners	...	180x60 FLANGED PLATE	✓					
	Brackets, Stays	...	180x9 BULB PLATE	✓					
HATCH BEAMS	Number	...	3						
	Spacing	...	1460 mm						
	Scantling and Sketch	...	60x8						
		...	150x9	80x8	✓				
	Bearing Surface	...	80 mm						
FORE AND AFTERS	Number	...							
	Spacing	...							
	Unsupported Lengths	...							
	Scantling* and Sketch	...	← NONE →	✓					
	Bearing Surface	...							
HATCH COVERS	Material	...	YANGWOOD	HINGED STEEL					
	Thickness	...	65 mm	W.T. COVER					
	How fitted	...	F E A	RUBBER					
	Bearing Surface	...	65 mm	PACKING					
Spacing of Cleats	...	610 mm	SECURED WITH TUGGLES						
Number of Tarpaulins	...	2							
*Are wood fore and afters steel shod at all bearing surfaces? ✓									
Are battens and wedges efficient and in good condition? YES ✓									
Are tarpaulins in good condition and in accordance with rule requirements? YES									
Are lashings provided in accordance with rule requirements? YES ✓									

Particulars of any special features :—



© 2021

Lloyd's Register Foundation