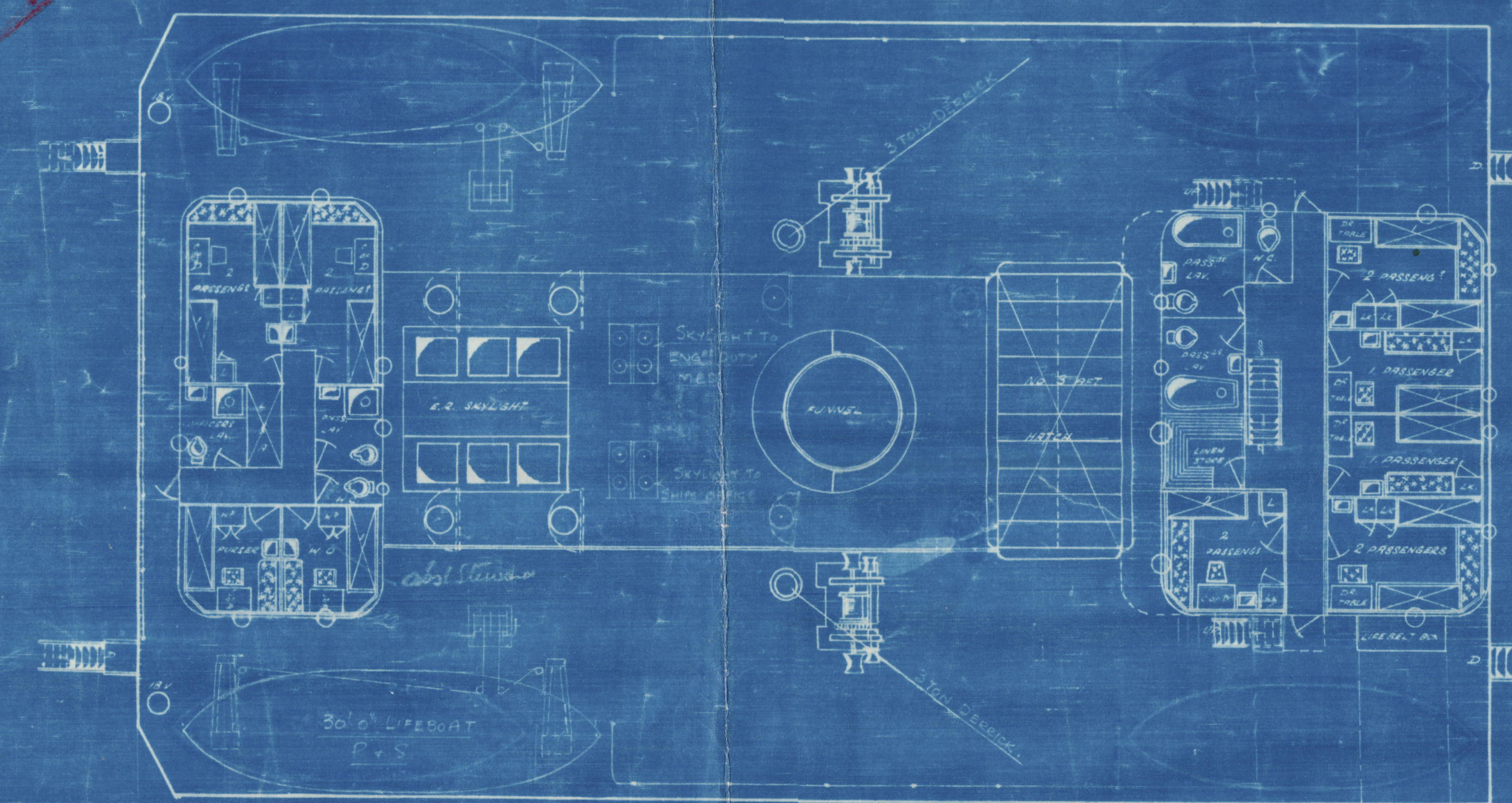


CH

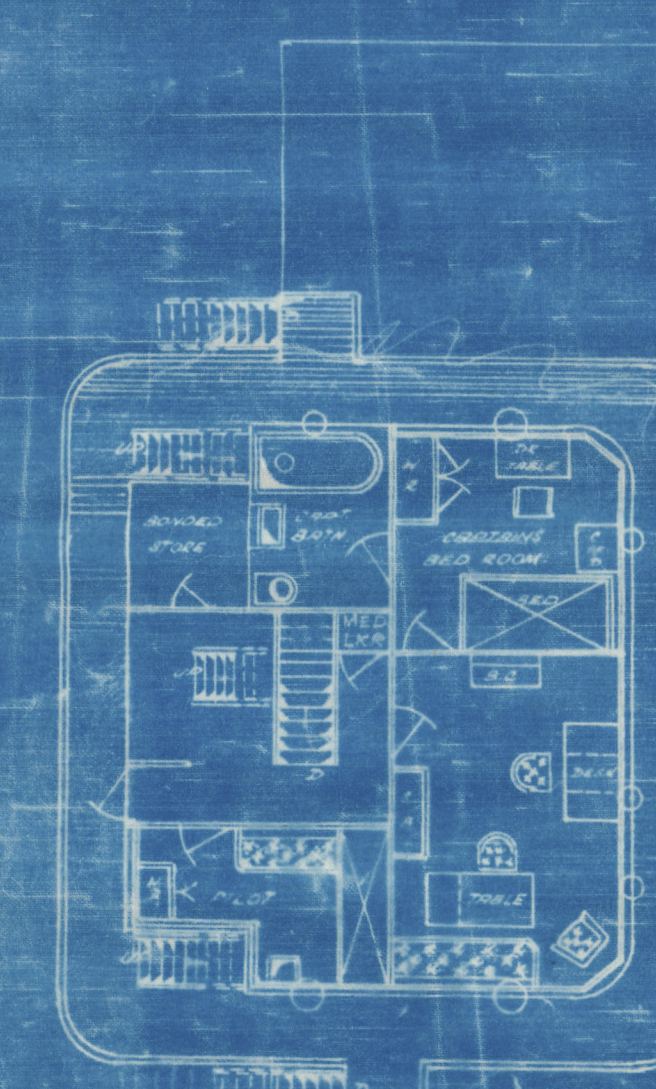
BOAT DECK



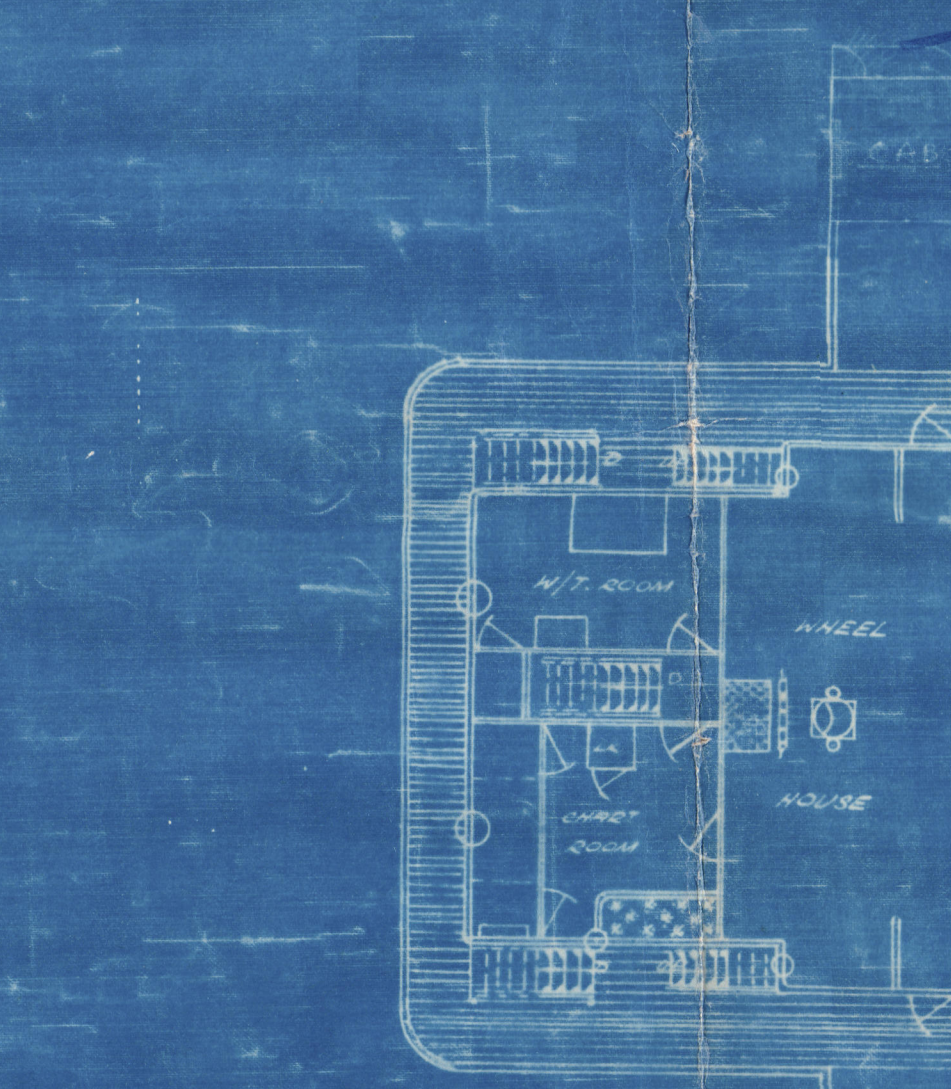
DESIGNED BY  
J. ROSS & CO.  
LONDON-ON-TYNE

SS. STANFIRTH

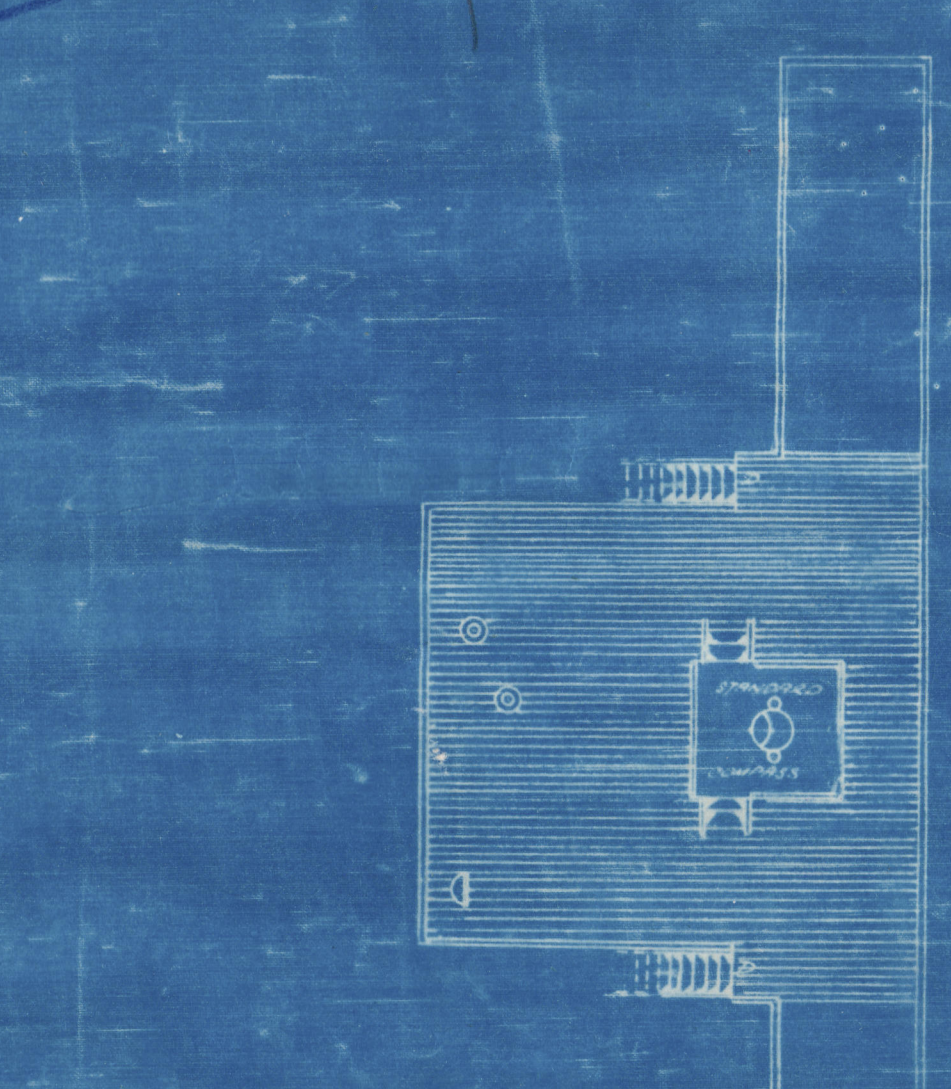
PROPOSED CONVERSION OF H.M.S. "BEAULY FIRTH" TO A MERCHANT SHIP



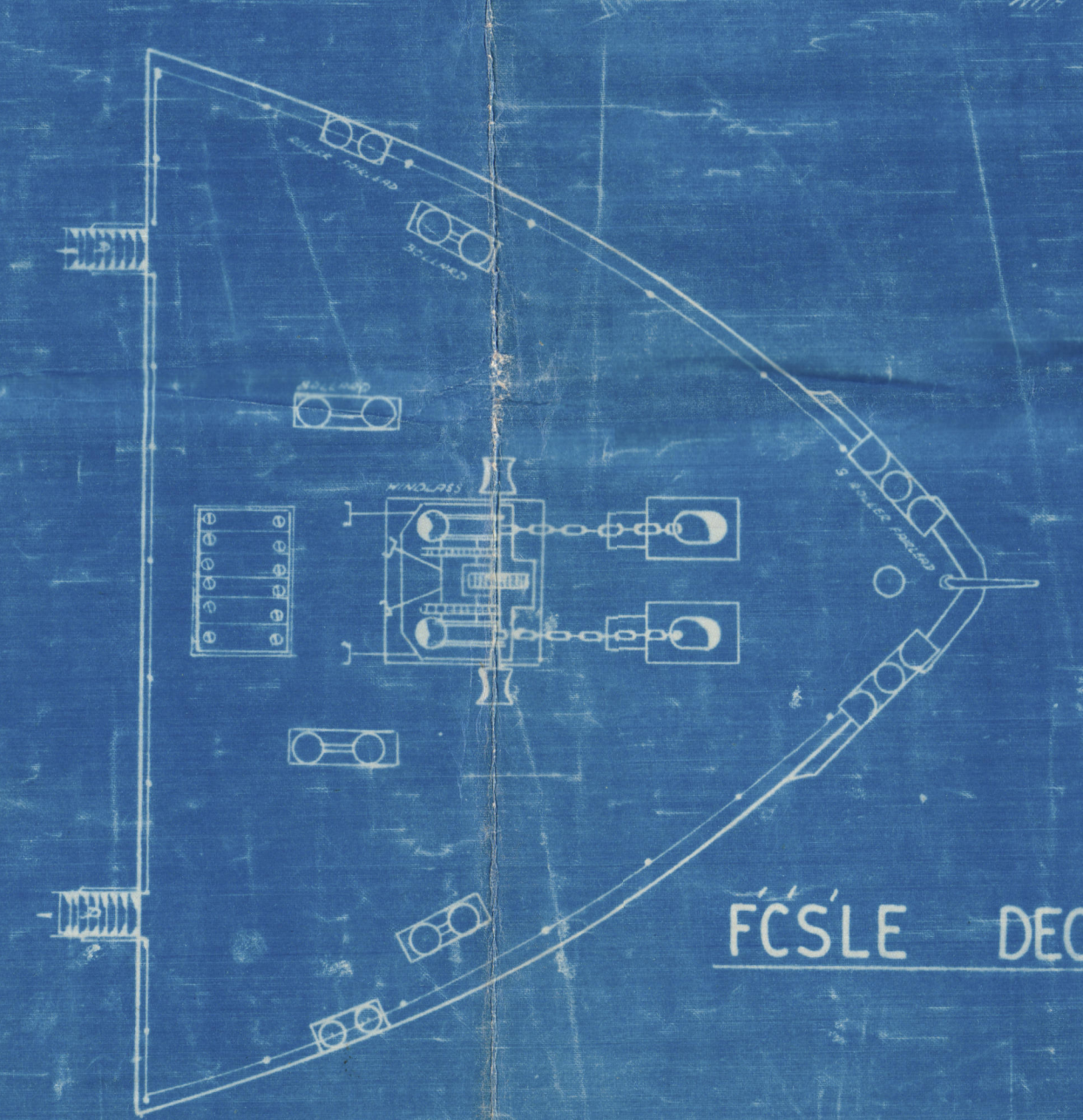
LOWER BRIDGE



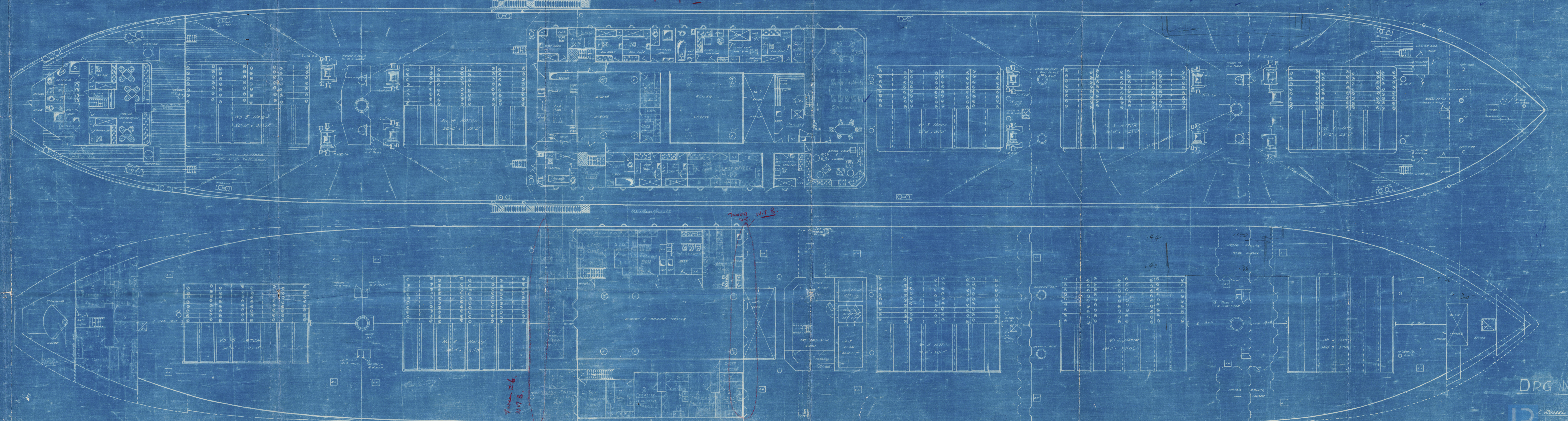
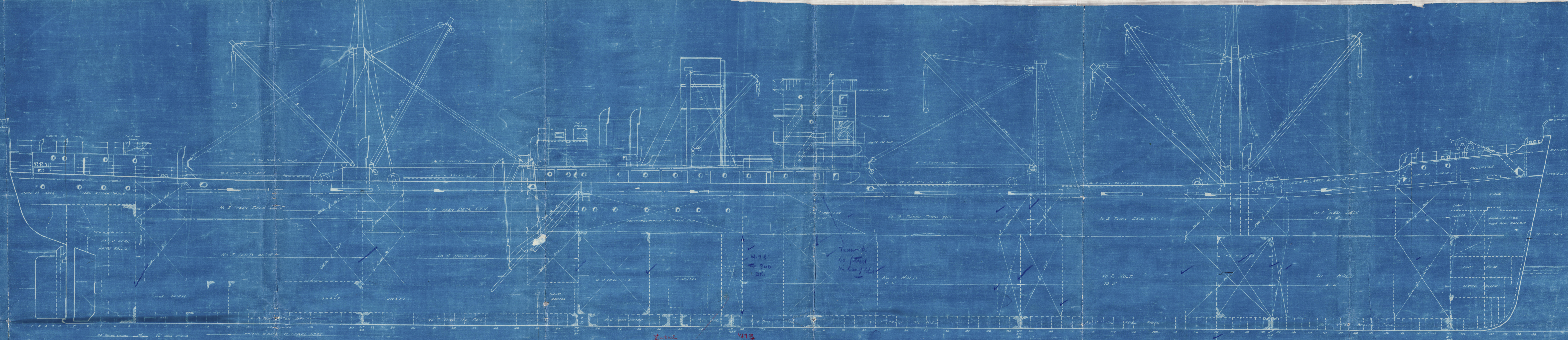
NAVIGATING BRIDGE



WHEELHOUSE TOP



FORECASTLE DECK



DRG. N° 3

J. ROSS & CO.  
MARINE ENGINEERS  
LONDON-ON-TYNE

010219-010228-0253



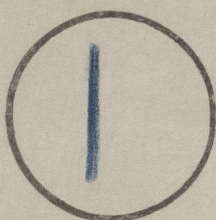
STANFIRTH

0253

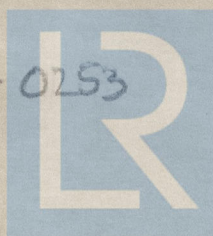
"STANFIRTH" ★

General arr. of conversion to merchant ship

RECORDS DEPT.,  
LONDON



010219~ 010228~ 0253



© 2021

Lloyd's Register  
Foundation