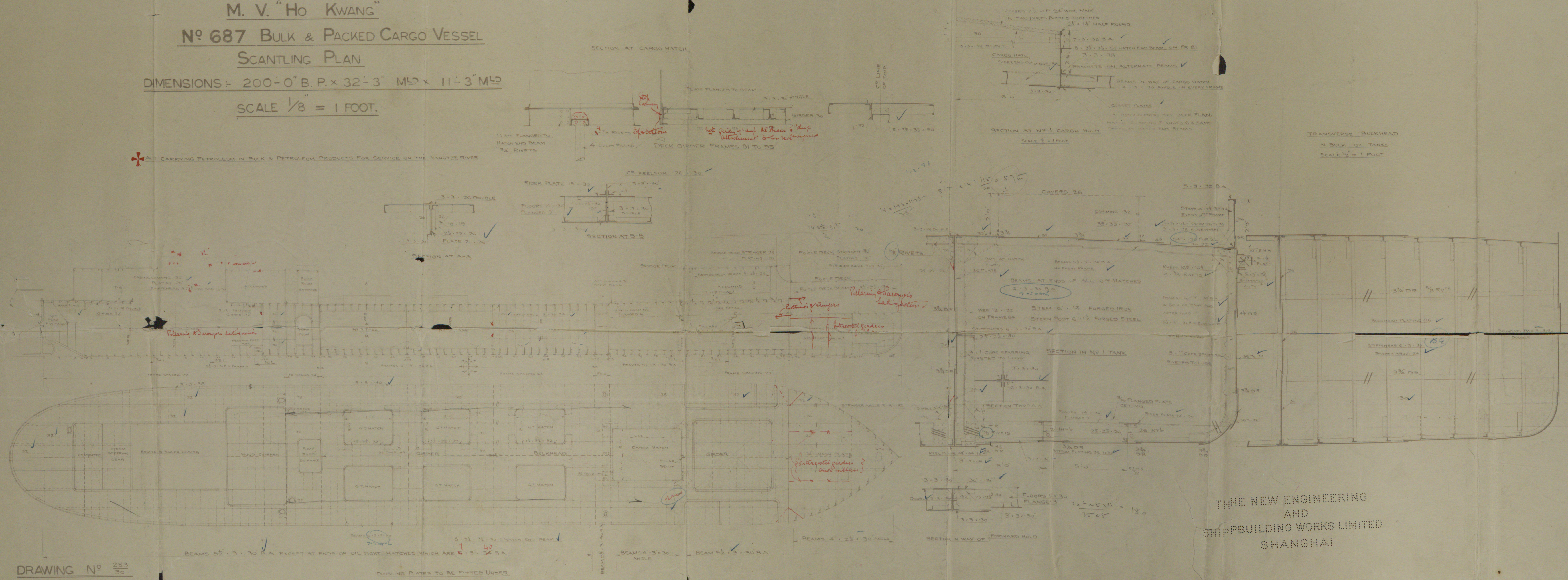


M. V. "Ho Kwang"
 No 687 BULK & PACKED CARGO VESSEL
 SCANTLING PLAN

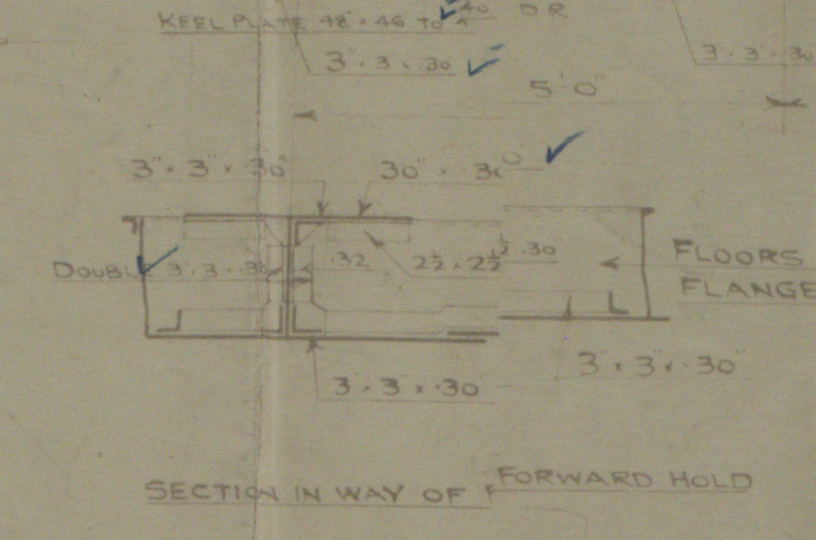
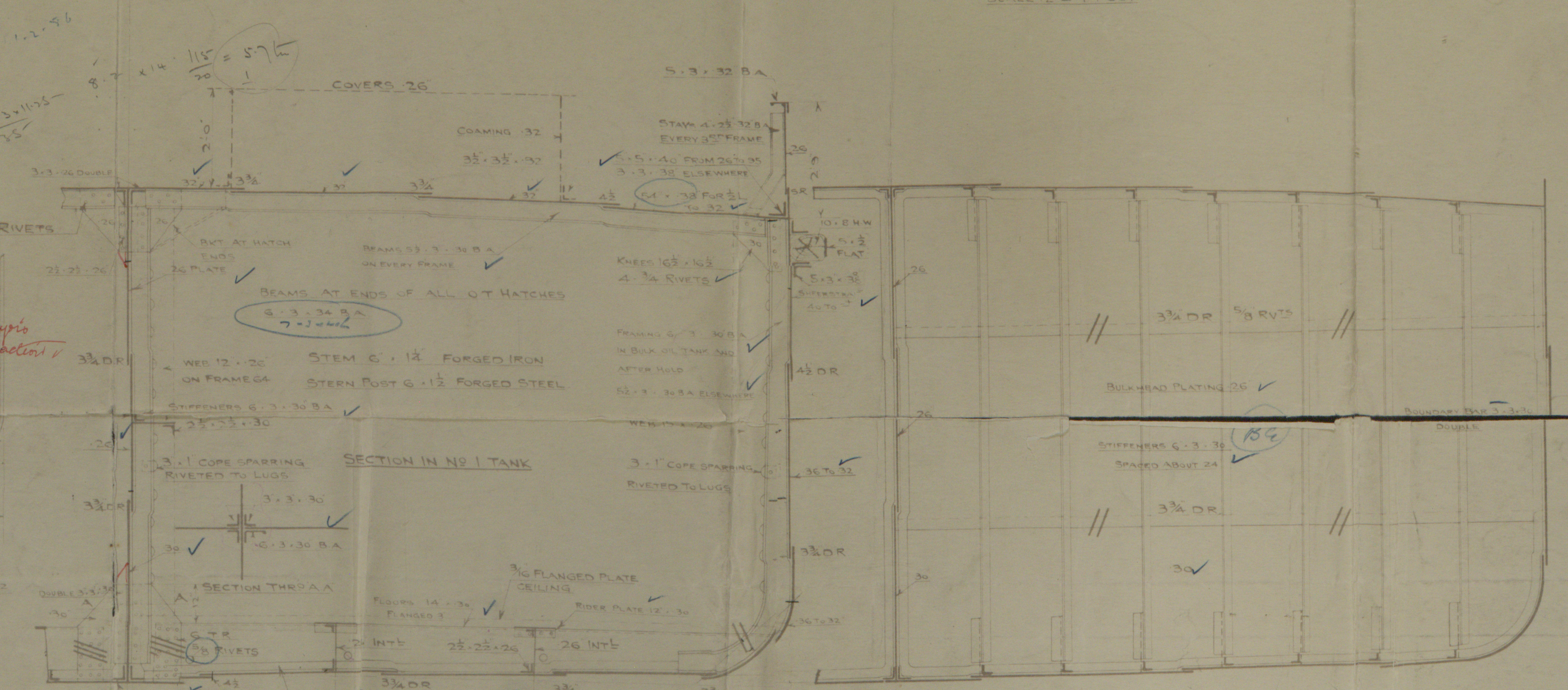
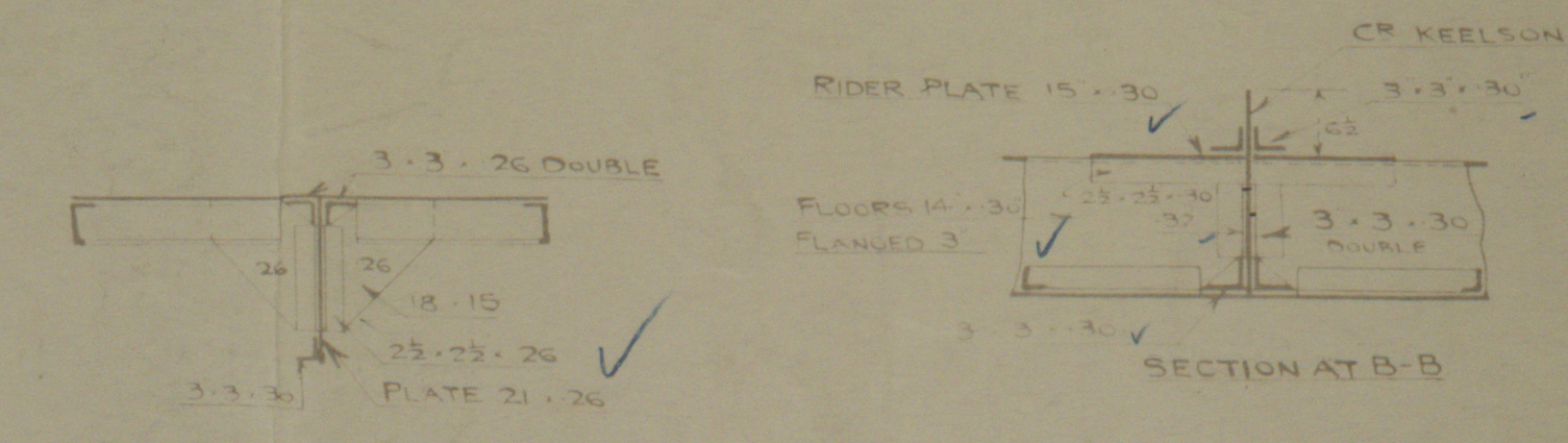
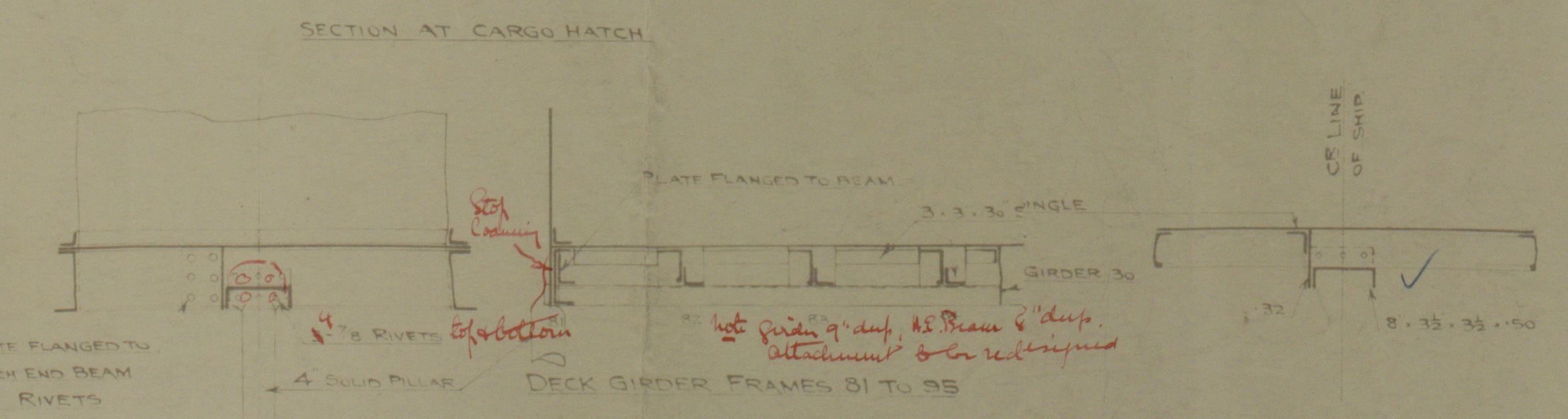
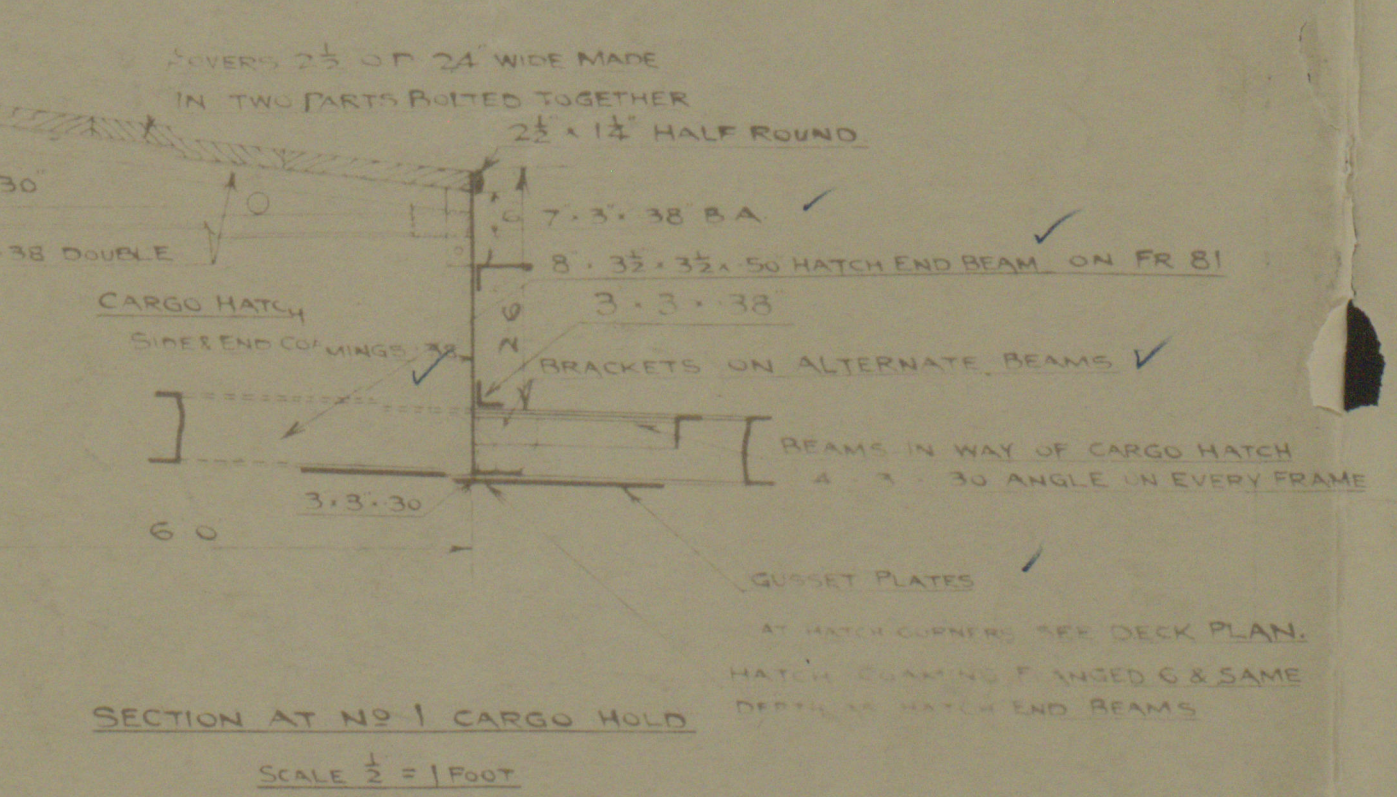
DIMENSIONS: 200'-0" B.P. x 32'-3" MLD x 11'-3" MLD
 SCALE 1/8" = 1 FOOT.

⊕ CARRYING PETROLEUM IN BULK & PETROLEUM PRODUCTS FOR SERVICE ON THE YANGTZE RIVER



DRAWING No 283
 30

DOUBLING PLATES TO BE FITTED UNDER
 ALL BOLLARDS & FAIRLEAD STOOLS

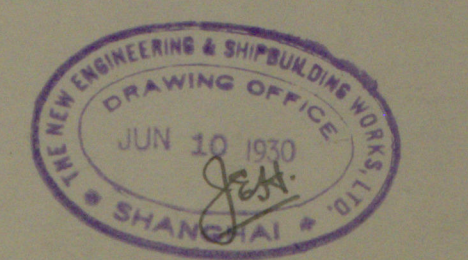
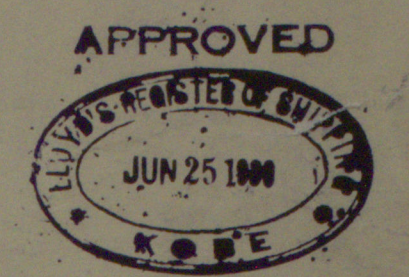


TRANSVERSE BULKHEAD
 IN BULK OIL TANKS
 SCALE 1/2" = 1 FOOT

RIVETING		SPACING OF RIVETS		DIA	SPACING
SHELL	KEEL BUTTS OVERLAPPED & DOUBLE RIV. FOR 1/2 L. AMIDSHIP	DOUBLE	REMAINDER	5/8	3 3/4
BUTTS OF SHEER STRAKE & STRAKE BELOW W. THROUGHOUT	DOUBLE	DOUBLE	REMAINDER	5/8	3 3/4
BUTTS OF STRAKE A B C D DOUBLE RIVETED THROUGHOUT	DOUBLE	DOUBLE	REMAINDER	5/8	3 3/4
BUTTS OF BOSS PLATING DOUBLE RIVETED	DOUBLE	DOUBLE	REMAINDER	5/8	3 3/4
ALL SEAMS DOUBLE RIVETED	DOUBLE	DOUBLE	REMAINDER	5/8	3 3/4
DECK BUTTS OF MAIN DECK STRINGER OVERLAPPED & DOUBLE RIV.	DOUBLE	DOUBLE	REMAINDER	5/8	3 3/4
BUTTS OF PLATING	DOUBLE	DOUBLE	REMAINDER	5/8	3 3/4
SEAM OF 25' 0" D R REMAINDER SINGLE	DOUBLE	DOUBLE	REMAINDER	5/8	3 3/4
BULKHEAD BUTTS SEAMS OF OIL TIGHT BULKHEAD OVERLAPPED & DOUBLE RIVETED THROUGHOUT	DOUBLE	DOUBLE	REMAINDER	5/8	3 3/4
BUTTS OF W T BULKHEADS OVERLAPPED & DOUBLE RIVETED	DOUBLE	DOUBLE	REMAINDER	5/8	3 3/4
SEAM OF LOWER STRAKE OF W T BULKHEAD DOUBLE RIVETED	DOUBLE	DOUBLE	REMAINDER	5/8	3 3/4
REMAINDER OF SEAMS SINGLE RIVETED	DOUBLE	DOUBLE	REMAINDER	5/8	3 3/4
CENTRE KEELSON BUTTS OVERLAPPED & DOUBLE RIVETED	DOUBLE	DOUBLE	REMAINDER	5/8	3 3/4
TRIMMING TANK BUTTS OVERLAPPED & DOUBLE RIVETED	DOUBLE	DOUBLE	REMAINDER	5/8	3 3/4
FOUR DECK BUTTS OF STRINGER PLATE OVERLAPPED & DOUBLE RIV.	DOUBLE	DOUBLE	REMAINDER	5/8	3 3/4
REMAINDER OF BUTTS OVERLAPPED & SINGLE RIVETED	DOUBLE	DOUBLE	REMAINDER	5/8	3 3/4
ALL SEAMS SINGLE RIVETED	DOUBLE	DOUBLE	REMAINDER	5/8	3 3/4
ENGINE CASING BUTTS OF COAMING OVERLAPPED & DOUBLE RIVETED	DOUBLE	DOUBLE	REMAINDER	5/8	3 3/4
REMAINDER OF BUTTS OVERLAPPED & SINGLE RIVETED	DOUBLE	DOUBLE	REMAINDER	5/8	3 3/4
ALL SEAMS SINGLE RIVETED	DOUBLE	DOUBLE	REMAINDER	5/8	3 3/4
OIL TIGHT & CARGO BUTTS OF COAMING OVERLAPPED & DOUBLE RIVETED	DOUBLE	DOUBLE	REMAINDER	5/8	3 3/4
PLATING TO DECK	DOUBLE	DOUBLE	REMAINDER	5/8	3 3/4
STRINGER TO BEAMS	DOUBLE	DOUBLE	REMAINDER	5/8	3 3/4
PLATING TO CHANNEL BEAM	DOUBLE	DOUBLE	REMAINDER	5/8	3 3/4
OIL TIGHT HATCH DECK ANGLE	DOUBLE	DOUBLE	REMAINDER	5/8	3 3/4
STEM & STERN POST	DOUBLE	DOUBLE	REMAINDER	5/8	3 3/4

NOTE: ALL RIVET HOLES IN WAY OF OIL OR
 GASTIGHT WORK TO BE PUNCHED 1/8"
 SMALL AND REAMED OUT FULL SIZE.

EQUIPMENT	
2 - BOWER ANCHORS EACH 14 1/2 CWT'S STOCKLESS HALLS MAKE	
1 - STREAM 4 1/2 CWT'S EX. STOCK	
125 FATHOMS 1 1/2" STUD CHAIN CABLE	
60 3 SW ROPE FOR STREAM ANCHOR FITTED ON REEL	
75 8 1/2 HEMP TOW LINE	
20 2 1/2 SW ROPE HAWSER FITTED ON REEL	
30 4 1/2 MANILA HAWSER	



THE NEW ENGINEERING AND
 SHIPBUILDING WORKS, LTD.

New Engineering Co. N° 6817

"
M.S. + Profile"

GEN. BOX NO ~~100~~

Ho. Kwang
Shi 3152.



© 2021

Lloyd's Register
Foundation

010229-010235-0208