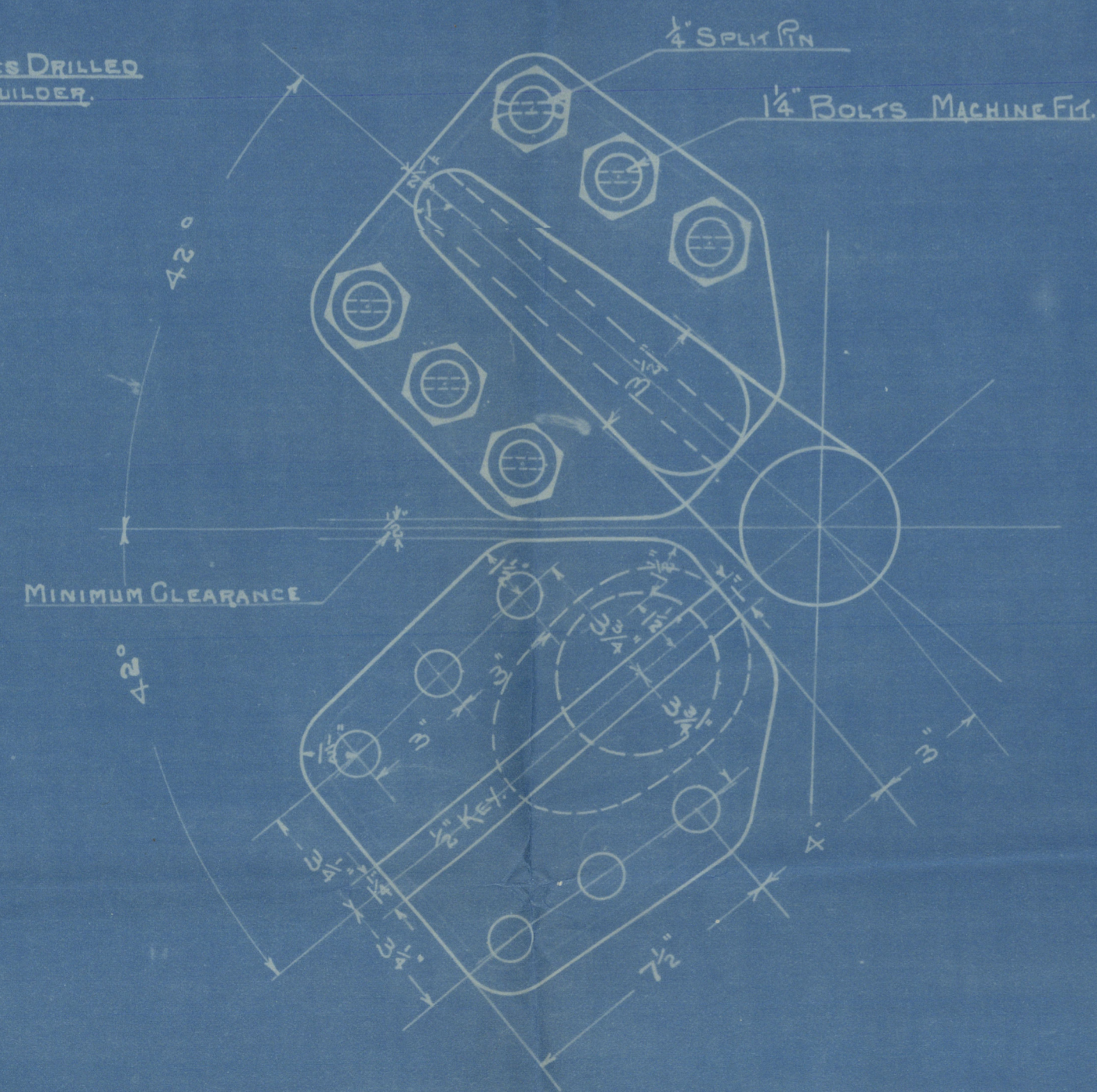


SIDE ELEVATION OF COUPLING

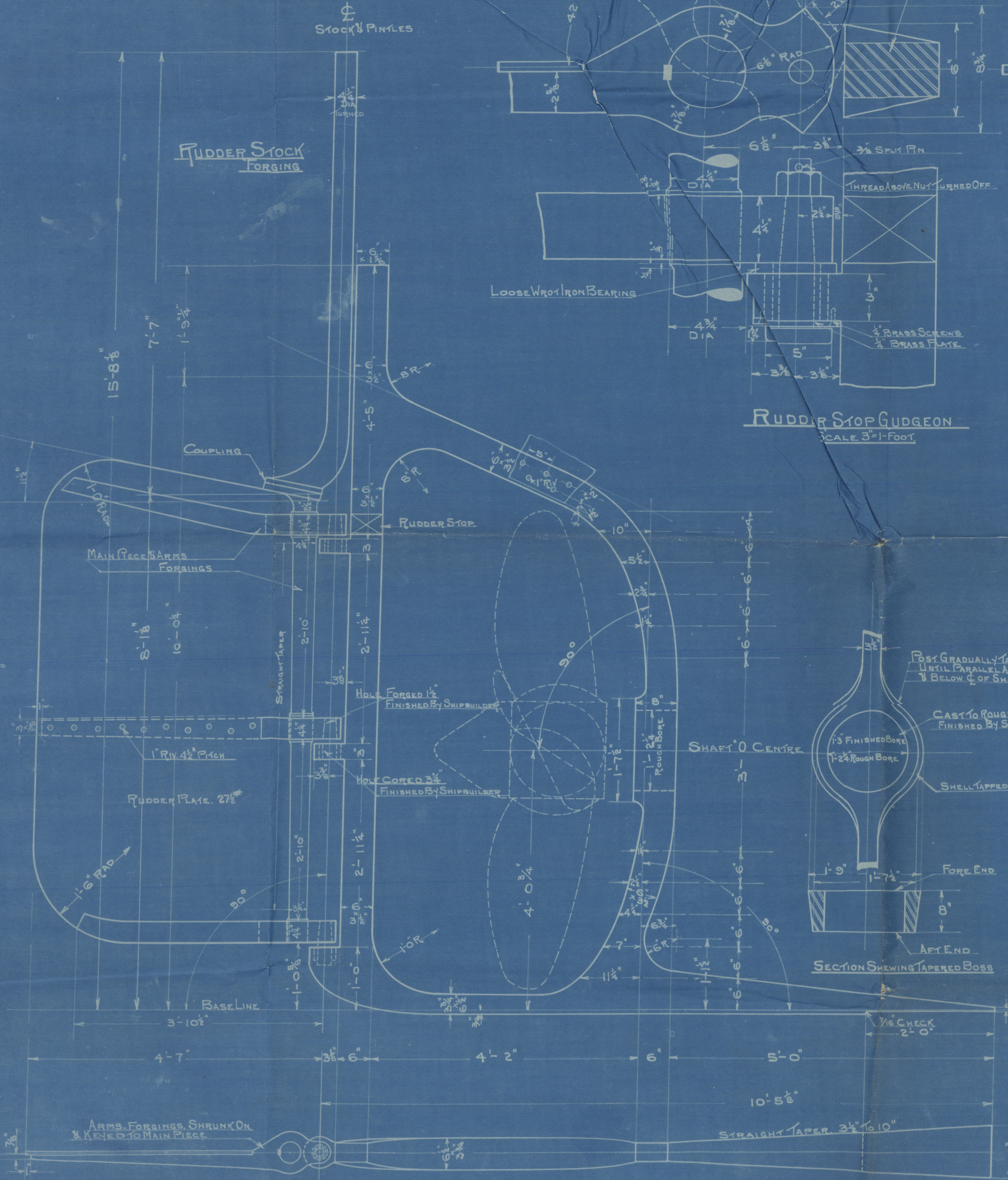
END ELEVATION OF COUPLING

NOTE:
SURFACES MACHINED HOLES DRILLED
& KEYWAY CUT BY SHIPBUILDER.



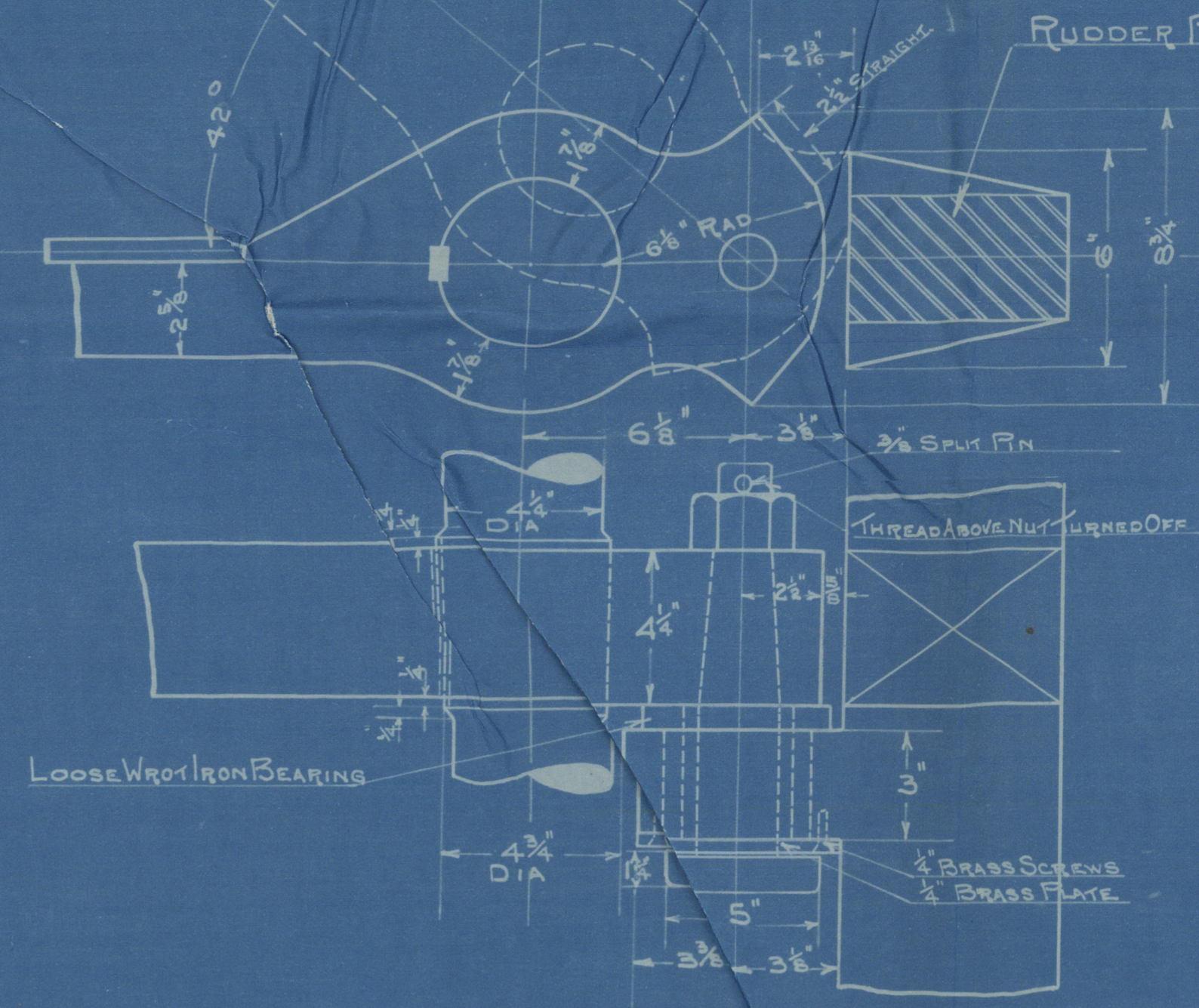
PLAN OF COUPLING
SCALE 3"=1' FOOT.

RUDDER STOCK
FORGING

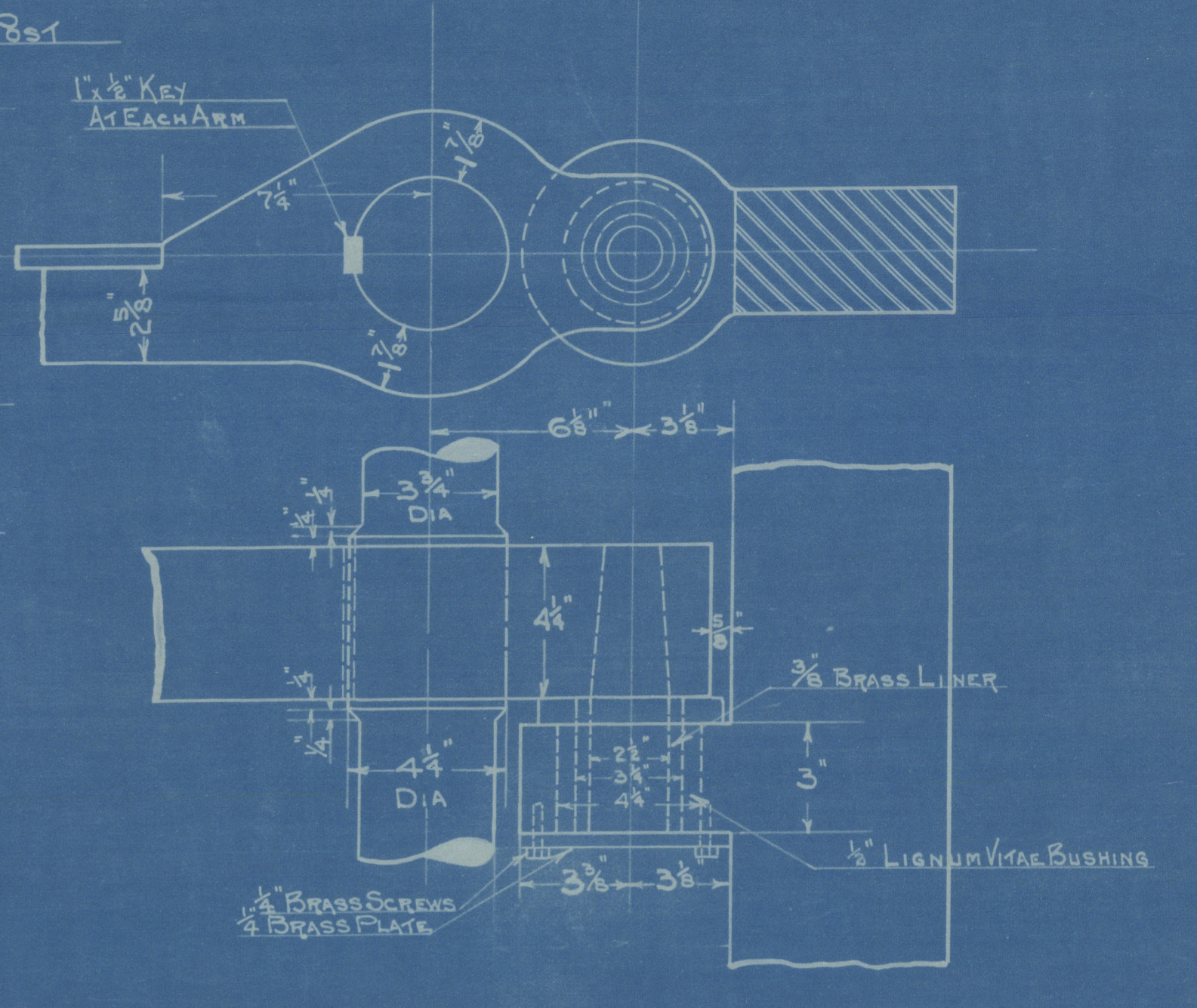


RUDDER FRAME
FORGING

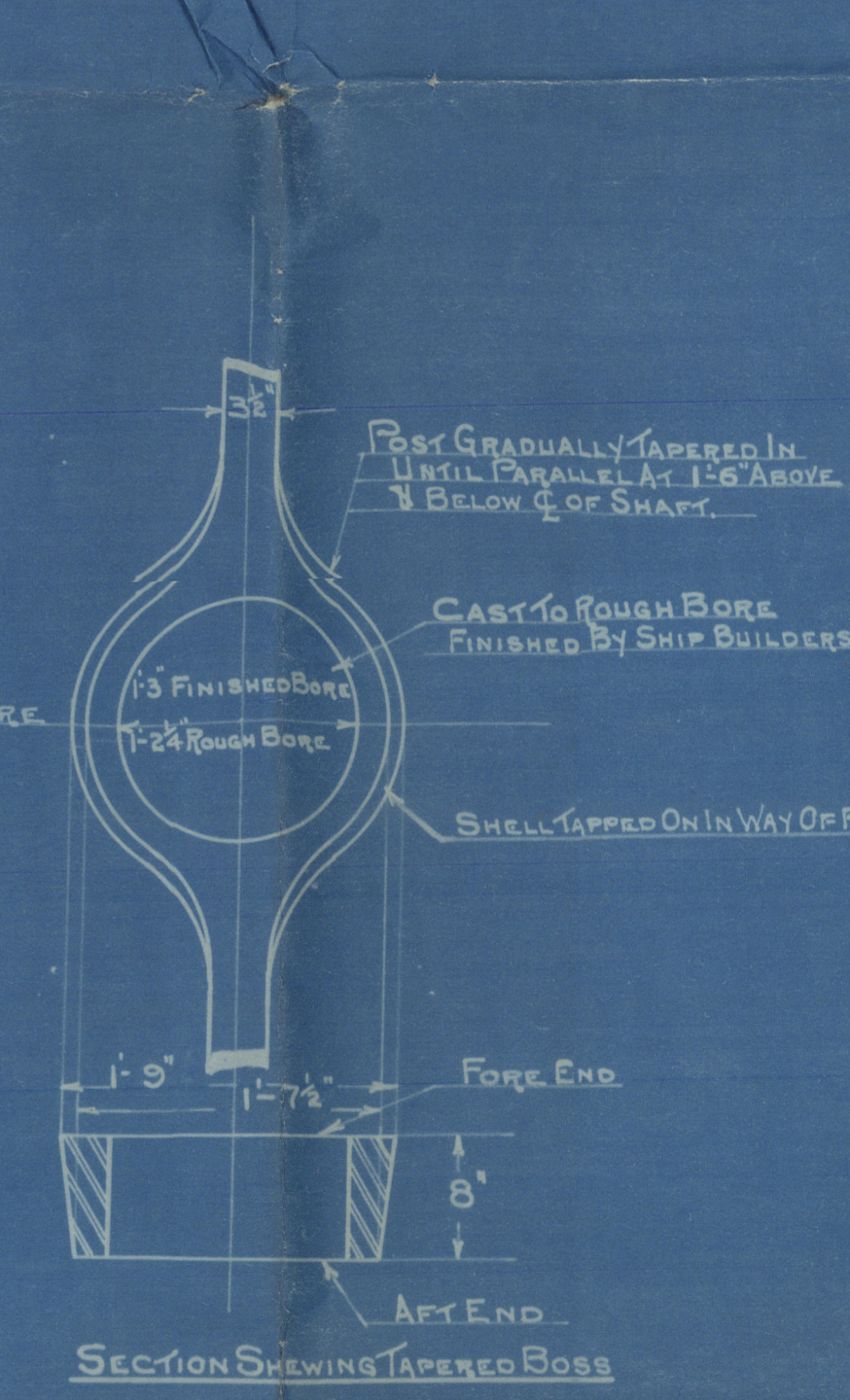
STERN FRAME, CAST STEEL.



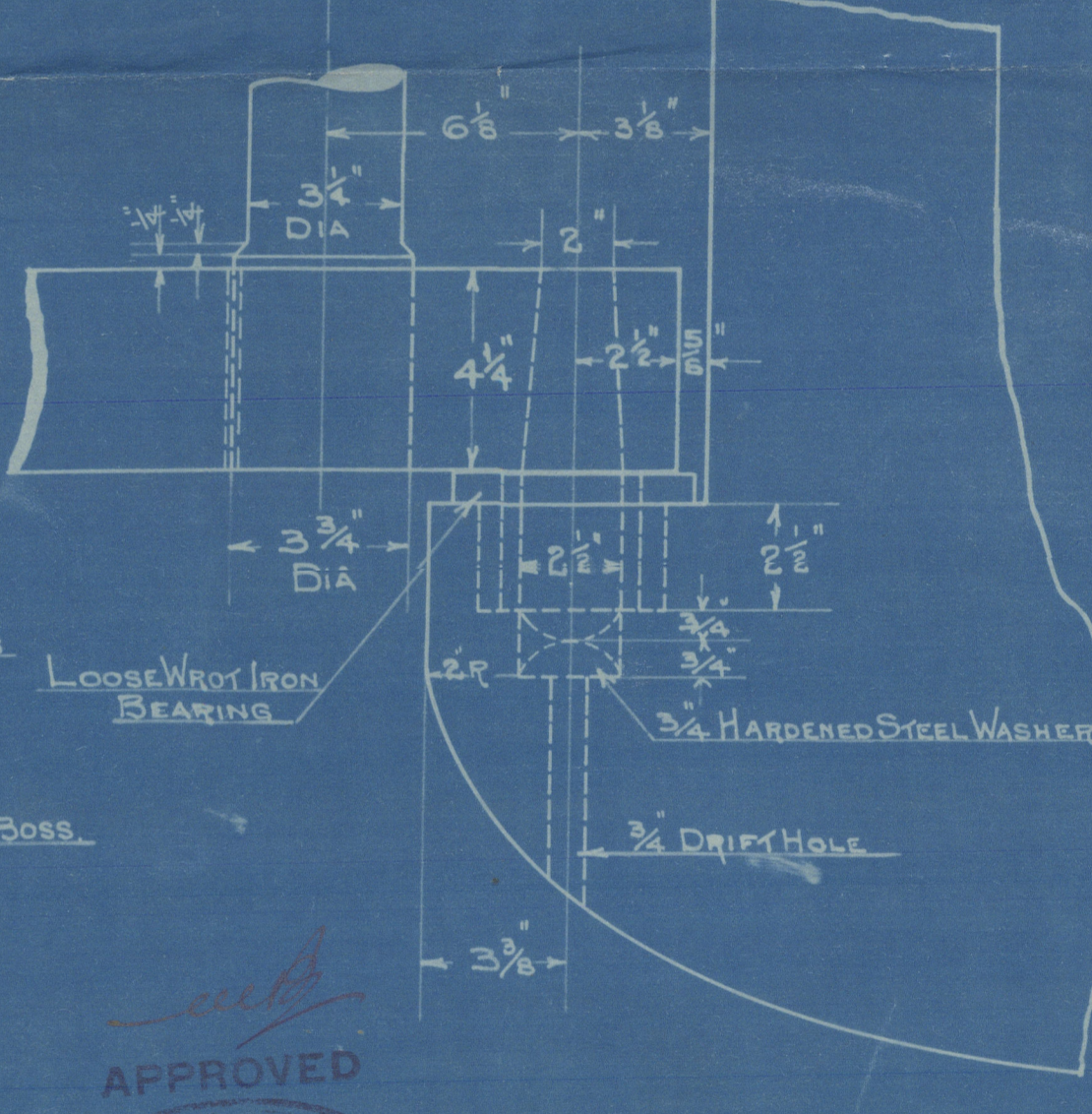
RUDDER STOP GUDGEON
SCALE 3"=1' FOOT.



CENTRE GUDGEON
SCALE 3"=1' FOOT.



SECTION SHOWING TAPERED BOSS



LOWER GUDGEON
SCALE 3"=1' FOOT.



TESTED TO LLOYD REQUIREMENTS

THE COLLINGWOOD SHIPBUILDING
COMPANY, LIMITED

COLLINGWOOD, ONTARIO

— STERN FRAME & RUDDER —

DRAWN BY A.P.M. & Q.

FILED MCH. 23. 1920 CHECKED BY

DATE MCH. 23. 1920 CHECKED BY

For 166

LONDON COPY

LL0105

PRINTS		
NO.	DEPT.	DATE