

N°506 S.S.

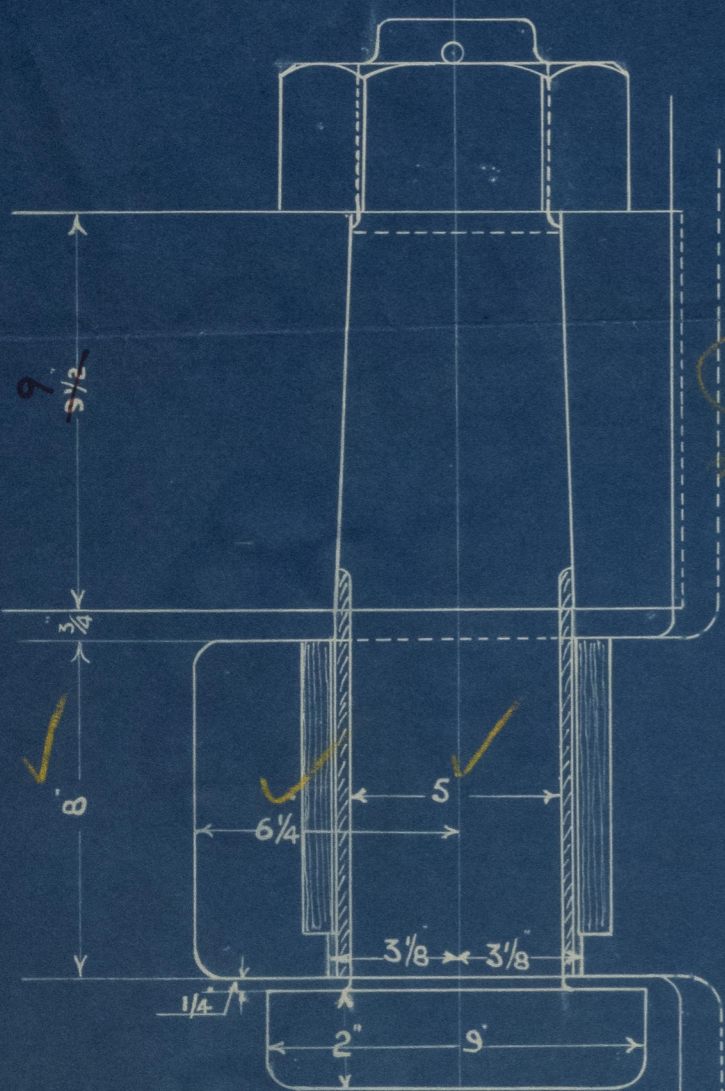
PROPOSED PLAN OF RUDDER

FORGED STEEL OR FORGED IRON

TO LLOYDS APPROVAL

SCALE $\frac{1}{2}$ " = 1 FOOT

DETAIL OF N°1 PINTLE



LENGTH OF VESSEL 420' 0"
 SPEED 11 KNOTS
 RUDDER AREA 160 SQ FT
 CENTRE OF GRAVITY ABAFT
 CENTRE OF PINS 3.73'
 A x D 596

SIX 3/4 BOLTS

2 x 1 1/2 STEEL FEATHER
 TAPPED TO LOWER FLANGE



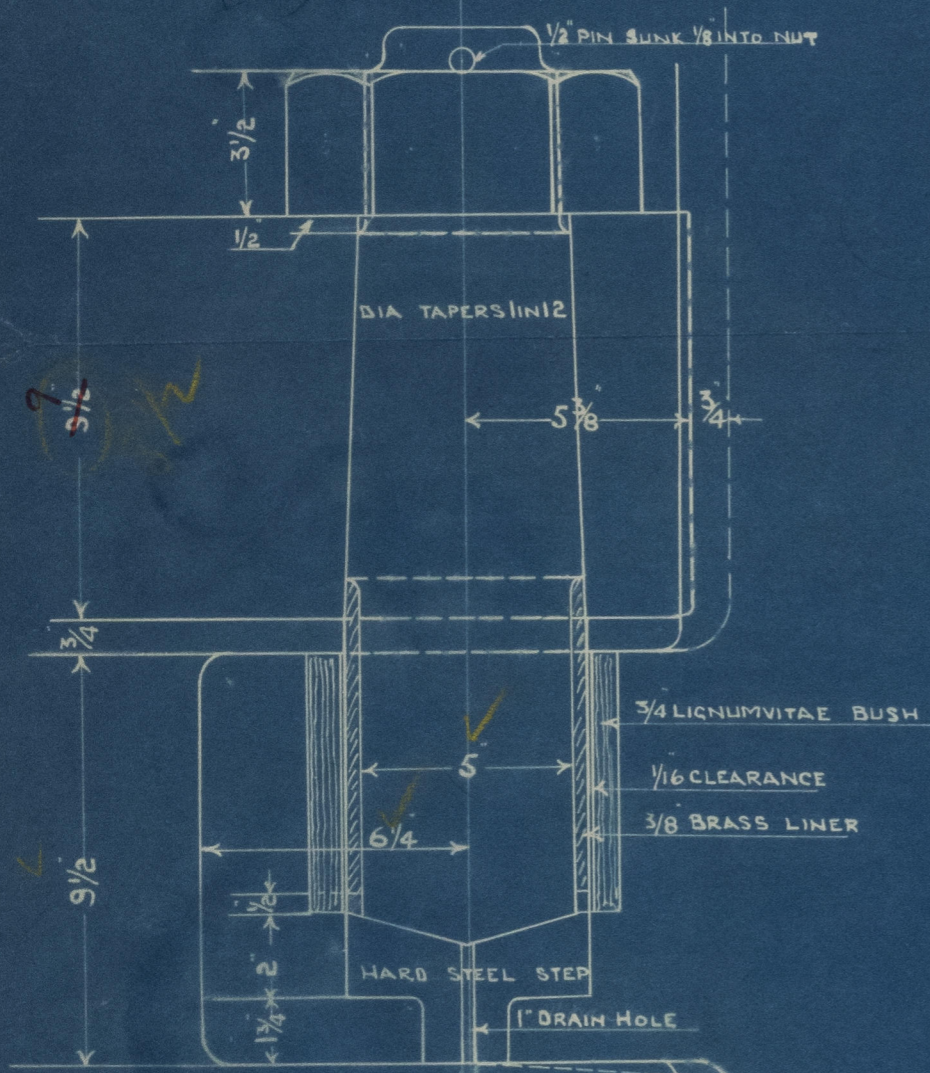
LOAD LINE

$$55 - \frac{58}{67} = 43\frac{1}{2}$$

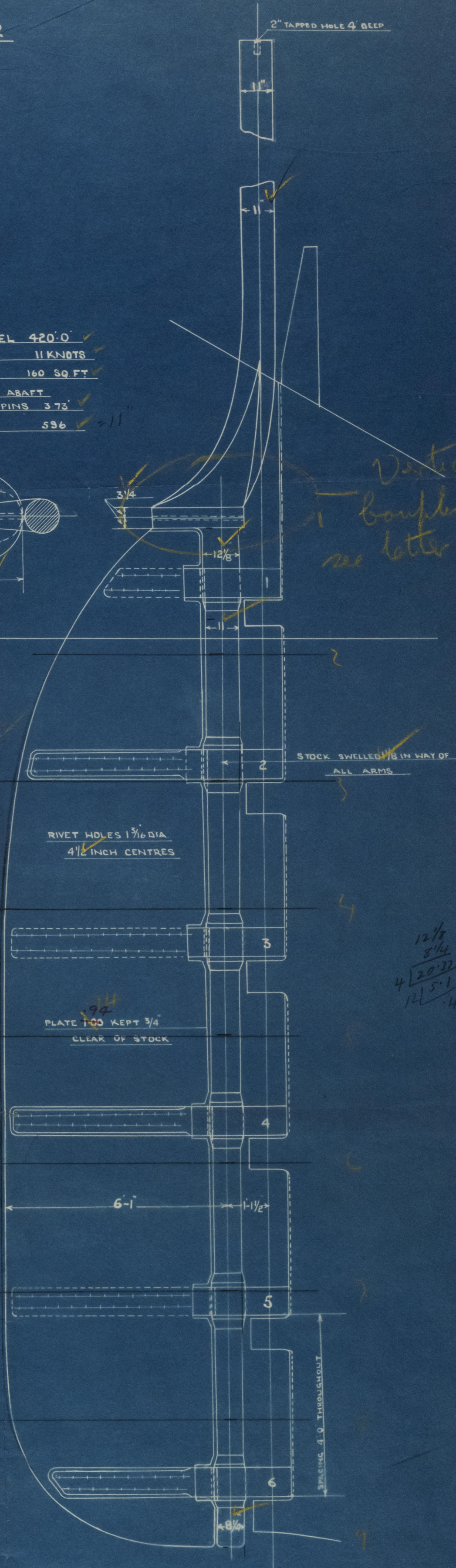
$$77 \times 55 = 4235$$

$$4235 \div 67 = 63.2$$

$$8 - 5 = 3$$



DETAIL OF ALL PINTLES EXCEPT N°1



Vertical
 bending
 see letter 24.29

$$\frac{12 \frac{1}{8} \times 8 \frac{1}{4}}{4} = 20.375$$

$$20.375 \div 5.1 = 4.0$$

$$2 \frac{1}{2} \times \frac{3}{4} \times \frac{1}{16} = \frac{3}{128}$$

$$\frac{3}{128} \times 67 = 1.7$$

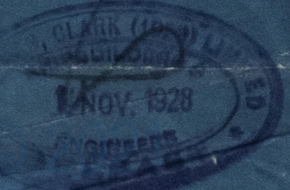
$$1.7 \div 2 = 0.85$$

KEY 2 3/8 x 1 1/16



TYPICAL RUDDER ARM

W.S.
 3. 11. 28



Lloyd's Register
 Foundation

Workman Clark

506

Rudder (amended)

~~GEN. EXH. 822~~

ss "Subank. 1"

Bel 10192

Office