

TABLE OF RIVETING

SHEERSTRAKE BUTTS: QUADRUPE OVERLAPS. THICK PLATES AT BRIDGE ENDS.

TO BE DOUBLE STRAPPED TREBLE RIV. TREBLE OVERLAPS IN BRIDGE AND AT ENDS.

STRAKE BELOW SHEERSTRAKE: QUADRUPE OVERLAPS. TREBLE OVERLAPS IN BRIDGE ENDS.

BRIDGE SHEER & STRAKE BELOW BUTTS TREBLE OVERLAPS.

DECK STRINGER BUTTS: QUADRUPE OVERLAPS. THICK PLATES AT BRIDGE ENDS QUADRUPE OVERLAPS.

TREBLE OVERLAPS IN BRIDGE & AT ENDS.

DECK PLATING BUTTS: TREBLE RIV. OVERLAPS DOUBLE IN BRIDGE SINGLE AT ENDS.

TRUNK SIDE BUTTS: DOUBLE.

TRUNK TOP PLATING BUTTS: OUTSIDE STRAKE MARKED (X) TREBLE OVERLAPS REMAINDER TO RULE.

ML BULKHEAD BUTTS: IN AFT OIL TANKS SINGLE RIVETED. TOP STRAKE DOUBLE RIVETED.

SEAMS: CLEAR OF OIL FUEL TANK SINGLE RIV. IN WAY OF OIL FUEL TANK DOUBLE.

LONG 7-14 RIVETS SPACED 4 1/2 DIA. APART FOR 10 RIVETS EACH SIDE OF B 5/8 DIA. ELSEWHERE.

IN WAY OF OIL FUEL TANK RIVETS SPACED 4 1/2 DIA. APART FOR 10 RIVETS EACH SIDE.

OF B 5/8 AND TRANSVERSES, 6 DIA. ELSEWHERE.

BRIDGE STRINGER BUTTS: TREBLE OVERLAPS.

BRIDGE DECK PLATING BUTTS: DOUBLE OVERLAPS & AS PER RULE.

SHELL PLATING BOTTOM & SIDE, TREBLE RIVETED OVERLAPS ALL FORE & AFT.

ALL RIVETING IN B 5/8 7/8 DIA EXCEPT IN 4 1/2 SEAMS WHERE 3/4 DIA.

TRANSVERSES 7/8 DIA THROUGHOUT.

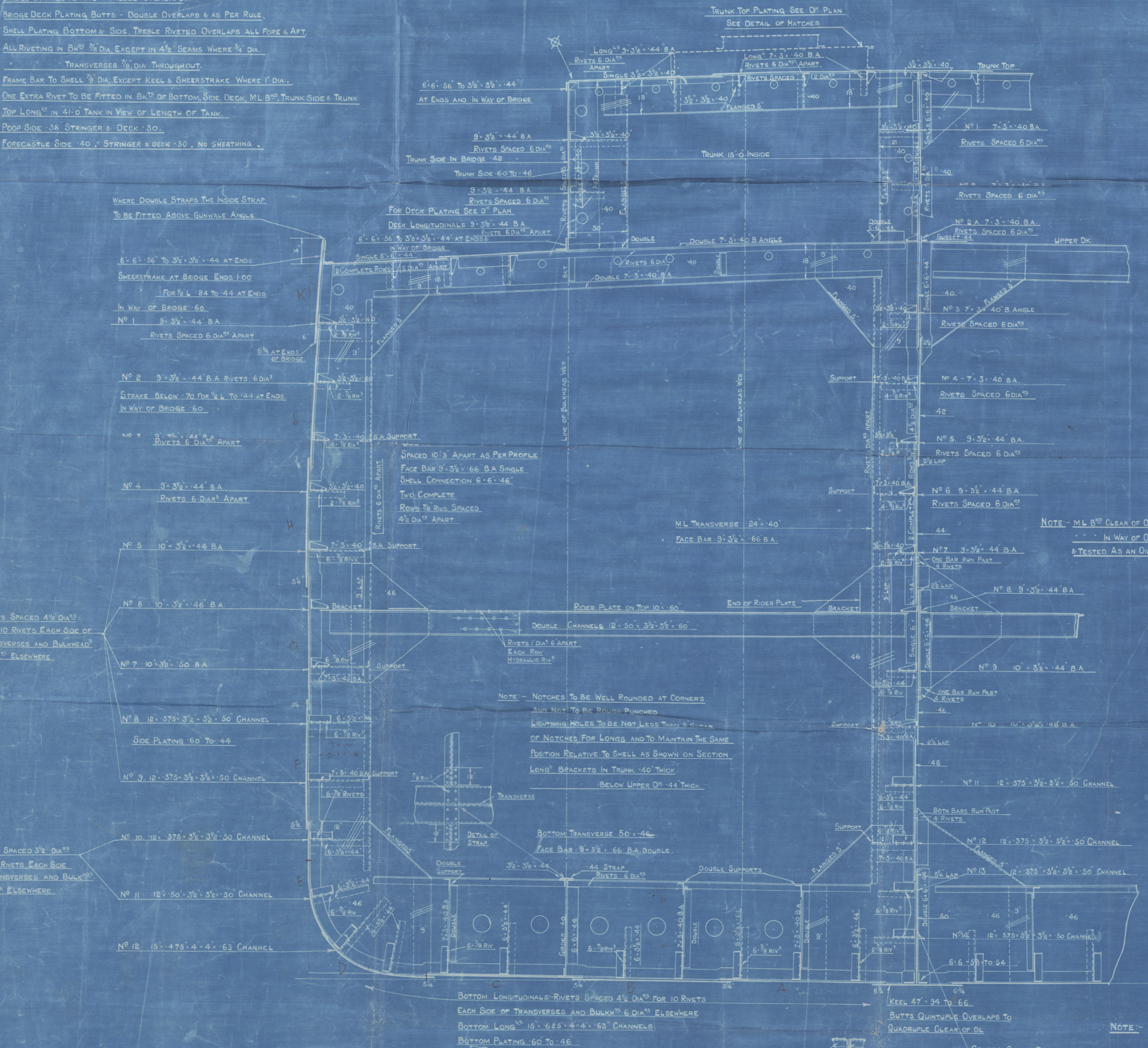
FRAME BAR TO SHELL 7/8 DIA EXCEPT KEEL & SHEERSTRAKE WHERE 1 DIA.

ONE EXTRA RIVET TO BE FITTED IN BKT OF BOTTOM SIDE DECK ML B 5/8 TRUNK SIDE & TRUNK TOP LONG 1/2 IN 4:0 TANK IN VIEW OF LENGTH OF TANK.

POOR SIDE 3/8 STRINGER & DECK 3/8.

FORECASTLE SIDE 40 & STRINGER & DECK 30. NO SHEATHING.

TRANSVERSE IN WAY OF OIL COMPARTMENTS.



COMPLETE LIST OF SECTIONS USED IN BUILDING THIS VESSEL	
15' x 4' x 4" CHANNEL	
10' x 3 1/2' x 3/8" BULB ANGLE	
9' x 3 1/2'	
8' x 3'	
7' x 3'	
8' x 3 1/2' ANGLE	
6' x 6'	
6' x 3 1/2'	
4' x 3'	
3 1/2' x 3 1/2'	

NOTE - ML B 5/8 CLEAR OF OIL FUEL TANK NOT TO BE CAULKED.

IN WAY OF OIL FUEL TANK TO BE CAULKED CONSTRUCTED & TESTED AS AN OIL TIGHT COMPARTMENT. (SEE TESTING PLAN).

5000 TON TANKER.

MIDSHIP SECTION.

LENGTH BP 400' x 52' 0" MLD x 31' 0" DEPTH MLD.

SCALE 1/8" = 1 FOOT

ISHERWOOD SYSTEM

LYDD'S NUMERALS

BREADTH MLD 52' 00

DEPTH 31' 00

83' 00 1ST N°

LENGTH BP 400

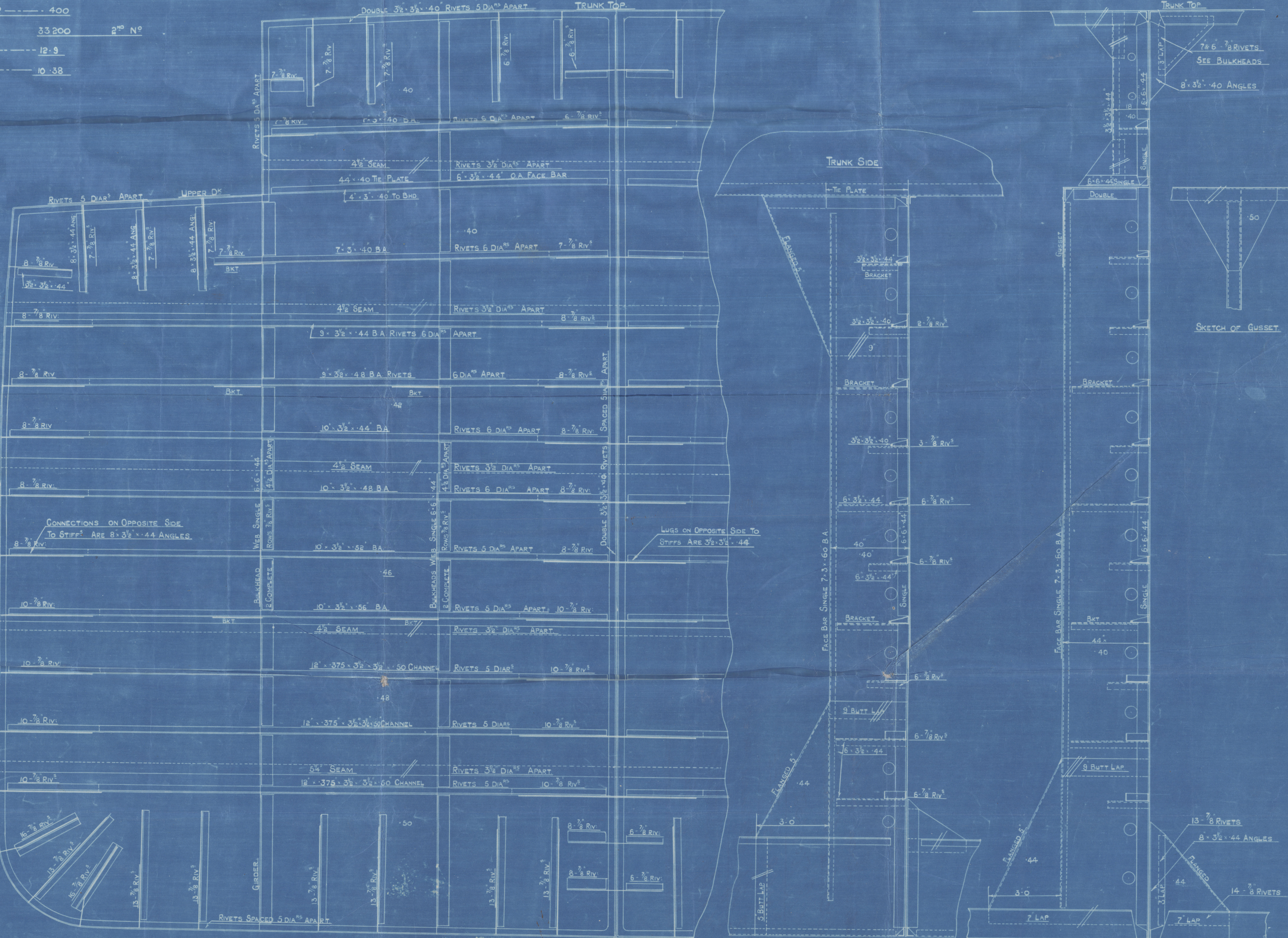
33' 00 2ND N°

1/2 D TO UPPER D° 12' 9

1/2 D BRIDGE 10' 38

EQUIPMENT TO RULE

OILTIGHT BULKHEAD



NOTE - BILGE BOTTOM AND 10 RIVET BRACKETS TO BE FLANGED

NOTE - FOR MACHINERY SPACES SEE SEPARATE SECTION

Wm & Robt Hunter &
Wigham Richardson Ltd.
P. No 1052.

ARGO

'WAR RANEE'

No. 71078.

"Z" Type Standard vessel.

Midship Section of
vessel as built.



© 2021

Lloyd's Register
Foundation