

11 JUN 1941

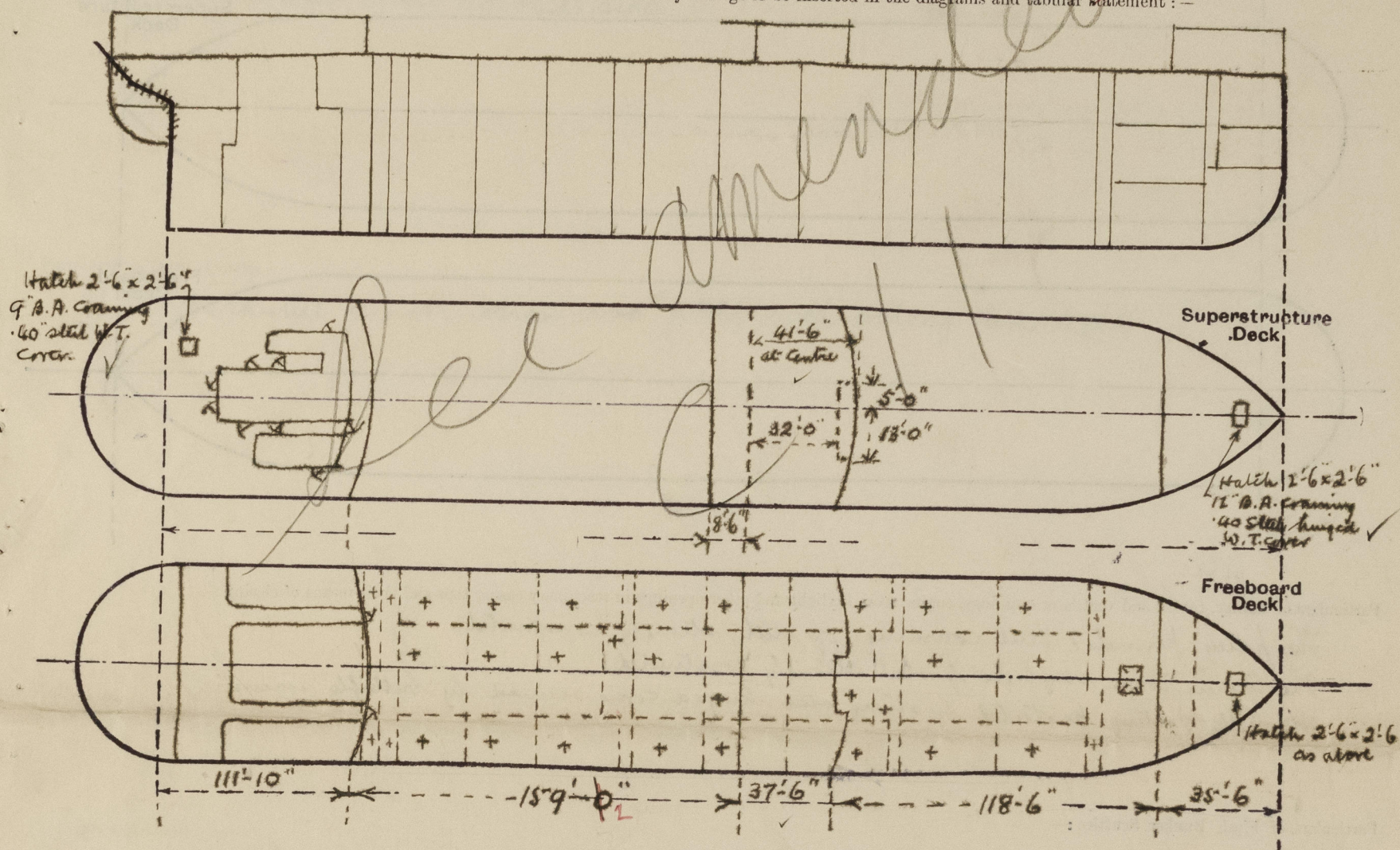
# Lloyd's Register of Shipping.

## SURVEYS FOR FREEBOARD.

(CONDITIONS OF ASSIGNMENT.)

Ship's Name **"ENNERDALE"** Port of Survey **Newcastle-on-Tyne (Walker).**  
 Official Number **168196** Surveyor's Signature **E.H. Dean.**  
 Nationality and Port of Registry **British, London.** Date of Survey **During Construction.**

Disposition and dimensions of superstructures, trunks, deckhouses and machinery casings to be inserted in the diagrams and tabular statement:—



Particulars of Superstructures, Trunks, Casings, Deckhouses.

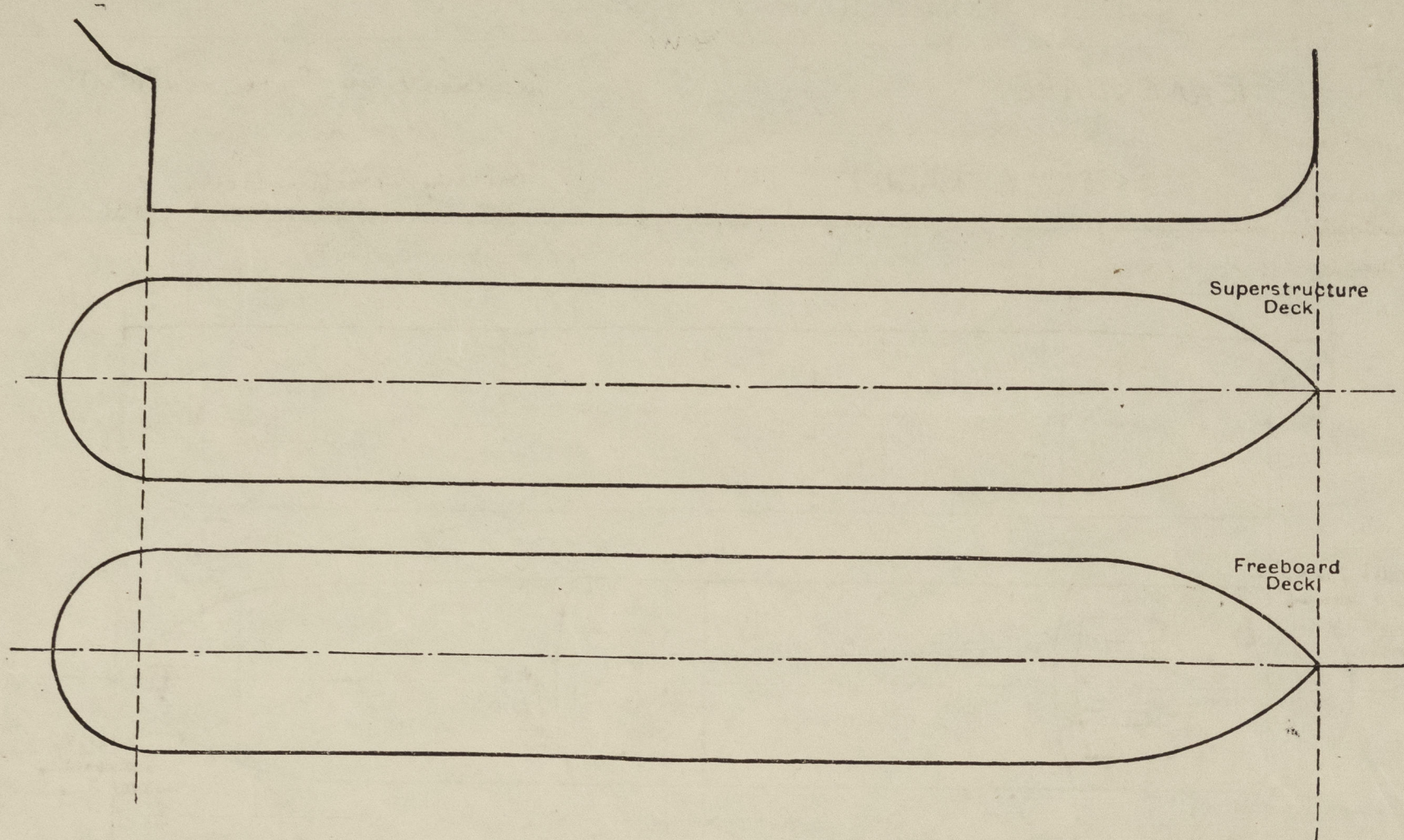
	Coaming	Plating	Stiffeners	Spacing	End Attachments of Stiffeners	Size of Openings	Height of Sills	Height of Casings
Poop Bulkhead ...	-	44"	10 x 3 1/2 x 7/16	30" V	Lugged	2 hinged W.T. doors - 5' x 2'-6"	18" ✓	7'-6" ✓
Raised Quarter Deck Bulkhead ...	-	-	-	-	-	-	-	-
Bridge, After Bulkhead ...	-	30"	4 x 3 x 5/16	32"	-	1 hinged W.T. door 4'-3" x 2'-3"	18" ✓	7'-6"
Bridge, Forward Bulkhead ...	-	44"	10 x 3 1/2 x 7/16 B.A.	30"	Lugged	2 openings 4'-1" x 3'-1"	18" ✓	7'-6" ✓
Forecastle Bulkhead ...	-	30"	4 x 3 x 5/16	30"	-	1 hinged W.T. door 5'-1" x 2'-6"	18" ✓	7'-6" ✓
Trunk, Aft ...	-	-	-	-	-	2 hinged W.T. doors 4'-2" x 2'-6"	18" ✓	7'-6" ✓
Trunk, Forward ...	-	-	-	-	-	-	-	-
Exposed Machinery Casings on Freeboard or Raised Quarter Decks ...	-	-	-	-	-	-	-	-
Exposed Machinery Casings on Superstructure Decks ...	-	34"-30"	4 x 3 x 5/16-40	31"	Shield alternately	2 hinged doors 5'-0" x 2'-0"	18"	7'-6"
Machinery Casings within Superstructures not fitted with Class I Closing Appliances ...	-	34"-26"	4 x 3 x 5/16	31"	✓	1 hinged door 5' x 2'	18"	7'-6"
Deckhouses on Flush Deck Ships ...	-	-	-	-	-	-	-	-

Particulars of Closing Appliances (state if capable of being manipulated from both sides).

Poop Bulkhead ...	2 steel hinged watertight doors, operated both sides. ✓
Raised Quarter Deck Bulkhead ...	-
Bridge, After Bulkhead ...	1 steel hinged watertight door, operated from both sides. ✓
Bridge, Forward Bulkhead ...	1 steel hinged watertight door, operated from both sides. ✓
Forecastle Bulkhead ...	1 steel hinged watertight door & 1 steel hinged door, both operated from both sides. ✓
Exposed Machinery Casings on Freeboard or Raised Quarter Decks ...	-
Exposed Machinery Casings on Superstructure Decks ...	4 steel hinged doors operated from both sides. ✓
Machinery Casings within Superstructures not fitted with Class I Closing Appliances ...	-
Deckhouses on Flush Deck Ships ...	-



The following diagrams should be used to indicate the positions of cargo and coaling hatchways, gangway, cargo and coaling ports, ventilators, companionways, etc., which would affect the seaworthiness of the ship:—



The fidley, funnel & Vent Coamings of steel, strongly constructed. ✓  
The Engine room skylight of steel strongly constructed. ✓  
The fidley gratings protected by strong steel hinged covers secured by butterfly screws. ✓

home.

bone.

Foile Deck.

2 @ 8" dia. Coaming 36" x 30" ✓  
4 @ 10" " " 36" x 32"

Upper Deck

4 @ 24" dia. Coaming 36" x 45" *offensively*  
1 @ 12" " " 11" x 32" *supported.*

Bridge Deck

2 @ 6" dia Coaming 32" x 30"  
a number of strong goose-necks 6 x 3 1/2" 18" to mouth.  
2 Fan Bats of strong construction 3'-3" to "

Pop Deck

4 @ 6" dia. Coaming 30"x-30" ✓

a number of strong goosehicks  $6 \times 3\frac{1}{2}$  33" to month. ✓

1 @ 9" dia. cranium 32" x 32" ✓

2 @ 10" Mushroom Cap. 32" craming 34" to opening.

2 @ 10" " Mushroom Cap. 32" cranning 34" to opening.

all Vent Coamings closed, wood plugs &  
Canvas covers. ✓

on	Jock head	to	Fae peak tank	2 -	4"	"	18"	high ✓
"	"	"	" Deep	2 -	4"	"	18"	"
"	upper Deck	"	" Coffdam	2 -	4"	"	36"	"
"	"	"	" aft	2 -	4"	"	36"	"
"	prop Oude	"	O.F.D.B. Tank	4 -	4"	"	18"	" above ✓
"	"	"	O.F. Bunker	4 -	4"	"	18"	" ✓
"	"	"	Coffdam	1 -	2½"	"	18"	"
"	"	"	Flod Bank D.B.	2 -	3"	"	18"	"
"	"	"	aft peak tank	2 -	2½"	"	18"	"
"	"	"	F.W. Tanks	4 -	2½"	"	18"	" ✓
"	"	"	Rudder tank	1 -	3"	"	18"	"

Air pipes where not fitted with ganges  
closed by wood plugs & canvas covers.

Ennerdale. No. 99503.

None

Scuppers from upper decks through deck stringers angle thus:- ✓  
 " " Port, Bridge & Fore decks discharge outboard through open pipe. ✓  
 Scuppers Sanitary discharges from port & Bridge accommodation discharge outboard with  
 strong brass storm valves at ship's side. ✓

of Substantial construction and fitted with strong deadlights. ✓

bone below freeboard deck

at Post, Bridge & pole decks - 3 1/2" high, 8 rails - stanchions spaced about 4' 9" apart. ✓  
at Foreboard deck - open rails - ditto.  
Bulwarks - 3 1/2" high x .20 thick. 7 "B.A. rail bar - 6" bulk plate stays. ✓  
about 6' 0" apart, specially stayed adjacent to erection ends.

The image contains two hand-drawn diagrams of trapezoidal structures, possibly chimneys or towers, with dimensions and material specifications.

**Left Diagram:**

- Top width:  $1' \frac{1}{2}''$  and  $1' 6''$
- Bottom width:  $10' \frac{1}{2}''$
- Height:  $7' - 10' \frac{1}{2}''$
- Top thickness:  $40''$  Brk.
- Inner wall thickness:  $4'' \times 4'' \times 40''$
- Outer wall thickness:  $3'' \times 3'' \times 40''$
- Bottom thickness:  $40''$  Brk.
- Base width:  $10' \frac{1}{2}''$
- Base height:  $2' - 6''$

**Right Diagram:**

- Top width:  $12'$
- Bottom width:  $8' - 0''$
- Height:  $7' - 10' \frac{1}{4}''$
- Top thickness:  $3' \frac{1}{2}'' \times 3' \frac{1}{2}'' \times 4''$
- Inner wall thickness:  $4'' \times 4'' \times 40''$

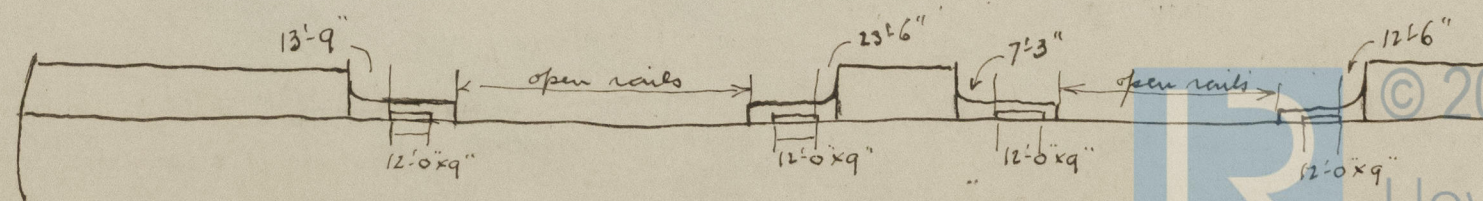
Notes:- The access from normal F.R.A. gangway & the F.R.A. gangway incorporated in the gangway arrangements are satisfactory.

Particulars of Freeing Arrangements.						
	Length of Bulwark	Height of Bulwark	Size of Freeing Ports	Number each side	Area each side	Rule area each side
After Well ... ..	159'-6" <sup>2</sup>	3'6"	12'-0" x 9"	4	Open rails for half length of exposure of weather deck	Open rails for half length of exposure of weather deck
Forward Well ... ..	118'-6"	3'6"	12'-0" x 9"			

State position of each freeing port ... .. } After Well :—  
(F. and A. position and height above deck edge) Forward Well :— } See sketch - 12" above deck to opening  
1.3.15. Home

State whether the freeing ports are fitted with shutters, bars, or rails, and give particulars of such: —

Additional area where sheer is less than standard.





PARTICULARS OF PROTECTION TO OPENINGS, ETC.

HATCHWAYS ON FREEBOARD AND SUPERSTRUCTURE DECKS									
Description of Hatchway			6 Centre Cargo Tanks	16 Side Cargo Tanks	2 Centre Cargo Tanks	To fore hold	To pump rooms	To Coffey dunn	To O.F. Bunkers
Dimensions of Hatchway			4'-6" x 3'-6"	4'-6" x 3'-6"	4'-6" x 3'-6"	8'-0" x 8'-0"	2'-6" x 2'-8"	23' x 18'	3'-0" x 3'-0"
COAMINGS	{	Height above Deck	30"	13"	13"	30"	24"	O.T.	20"
		Thickness { Sides	.40"	.40"	.40"	.44"	.36"	handles with	.40"
		Ends	.40" ✓	.40" ✓	.40" ✓	.44" ✓	.36" ✓	12 x 3 1/2 x 3 1/2 channel	.40" ✓
		Stiffeners	-	-	-	-	-	-	-
Brackets, Stays			-	-	-	-	-	-	- ✓
HATCH BEAMS	{	Number	/	/	/	/	/	coaming round	/
		Spacing	/	/	/	/	/	✓	/
Scantling and Sketch			/	/	/	/	/	/	/
FORE AND AFTERS	{	Bearing Surface	/	/	/	/	/	/	/
		Number	/	/	/	/	/	/	/
Spacing			/	/	/	/	/	/	/
Unsupported Lengths			/	/	/	/	/	/	/
Scantling* and Sketch			/	/	/	/	/	/	/
HATCH COVERS	{	Material	.60"	.60"	.60"	.36"	.36"		.60"
		Thickness	Steel	Steel	Steel	Steel	Steel		Steel
		How fitted	hinged	hinged	hinged	hinged	hinged		hinged
		Bearing Surface	O.T. ✓	O.T. ✓	O.T. ✓	O.T. ✓	O.T. ✓		O.T. ✓
Spacing of Cleats			-	-	-	-	-	-	-
Number of Tarpaulins			-	-	-	-	-	-	-
*Are wood fore and afters steel shod at all bearing surfaces? ✓									
Are battens and wedges efficient and in good condition? ✓									
Are tarpaulins in good condition and in accordance with rule requirements? ✓									
Are lashings provided in accordance with rule requirements? ✓									

Particulars of any special features:—

Displacement at 28'-0" draught 17111 - 2 tons per inch 56.77 ✓  
" " 27'-0" 16428 - " " " 56.15 ✓  
J. L. 16428

Endorsement at first survey and at surveys for renewal of Certificate:—

The fittings and appliances are in accordance with the particulars shown on this form (or as now modified) and are in good condition.

