

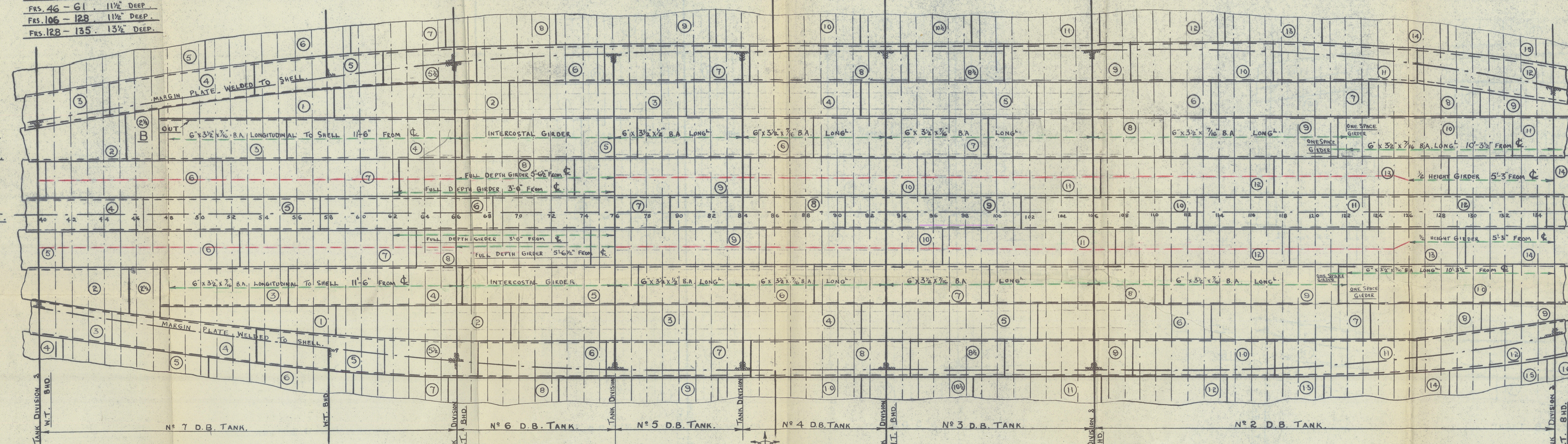
NOTE:-

1/2" THICK PLATE GIRDER FITTED BETWEEN:-  
FRS. 40-46. 13 1/2" DEEP.  
FRS. 46-61. 11 1/2" DEEP.  
FRS. 106-128. 11 1/2" DEEP.  
FRS. 128-135. 13 1/2" DEEP.

GIRDERS FITTED ON P.S.  
SIDES APPROX. 17'-9" FROM CL.

PORT SIDE

E STRAKE IN.  
D STRAKE OUT.  
B STRAKE IN.  
A STRAKE IN.  
KEEL OUT.



IN A STRAKE  
OUT B STRAKE  
IN C STRAKE  
OUT D STRAKE  
IN E STRAKE

STARBOARD SIDE

THE  
BARRY CRAVING DOCK  
& ENGINEERING CO. LTD.  
BARRY DOCK

S.S. TAVISTOCK.

SHELL STIFFENING IN WAY OF DOUBLE

BOTTOM TANKS.

SCALE:- 1/8" = 1 FOOT.

NOTE:- FRAMES & SHELL PLATES  
ARE NUMBERED FROM AFT.  
FRAME SPACING 2'-6".

EXISTING GIRDERS. (IN GREEN)

NEW GIRDERS (IN RED)  
INTERCOSTAL BARS 2'-6" x 6" x 3" x 1/2" O.A. WITH TOE  
OF 6" FLANGE INTERMITTENT-WELDED TO SHELL,  
& ENDS OF BARS WELDED SOLID TO FLOORS.  
(AT 5'-6 1/2" FROM CL.)

9TH APRIL 1952.

B.G.D. & ENG. CO. LTD. D. N° 109.



CARDIFF

s/s. Yavistock

Cardiff Report No: 54492

010484-010494-0201

RECORDS DEPT.  
LONDON.



© 2021

Lloyd's Register  
Foundation