

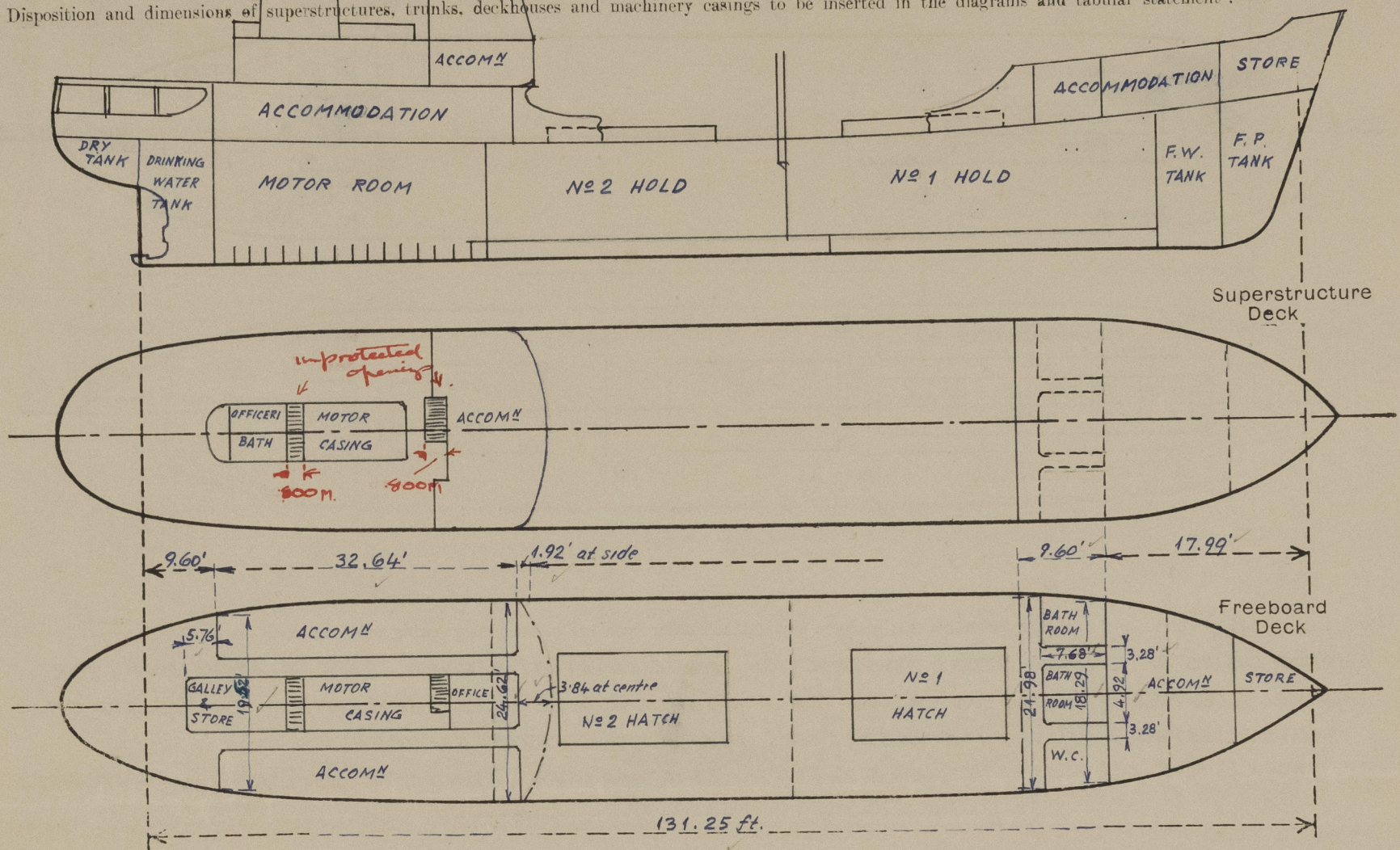
Lloyd's Register of Shipping.

SURVEYS FOR FREEBOARD.

(CONDITIONS OF ASSIGNMENT.)

Ship's Name " ILOSANGI " Port of Survey TRIESTE
 Official Number ✓ Surveyor's Signature Alex M. Hopkins
 Nationality and Port of Registry INDONESIAN - DJAKARTA Date of Survey DURING CONSTRUCTION

Disposition and dimensions of superstructures, trunks, deckhouses and machinery casings to be inserted in the diagrams and tabular statement:—



Particulars of Superstructures, Trunks, Casings, Deckhouses.

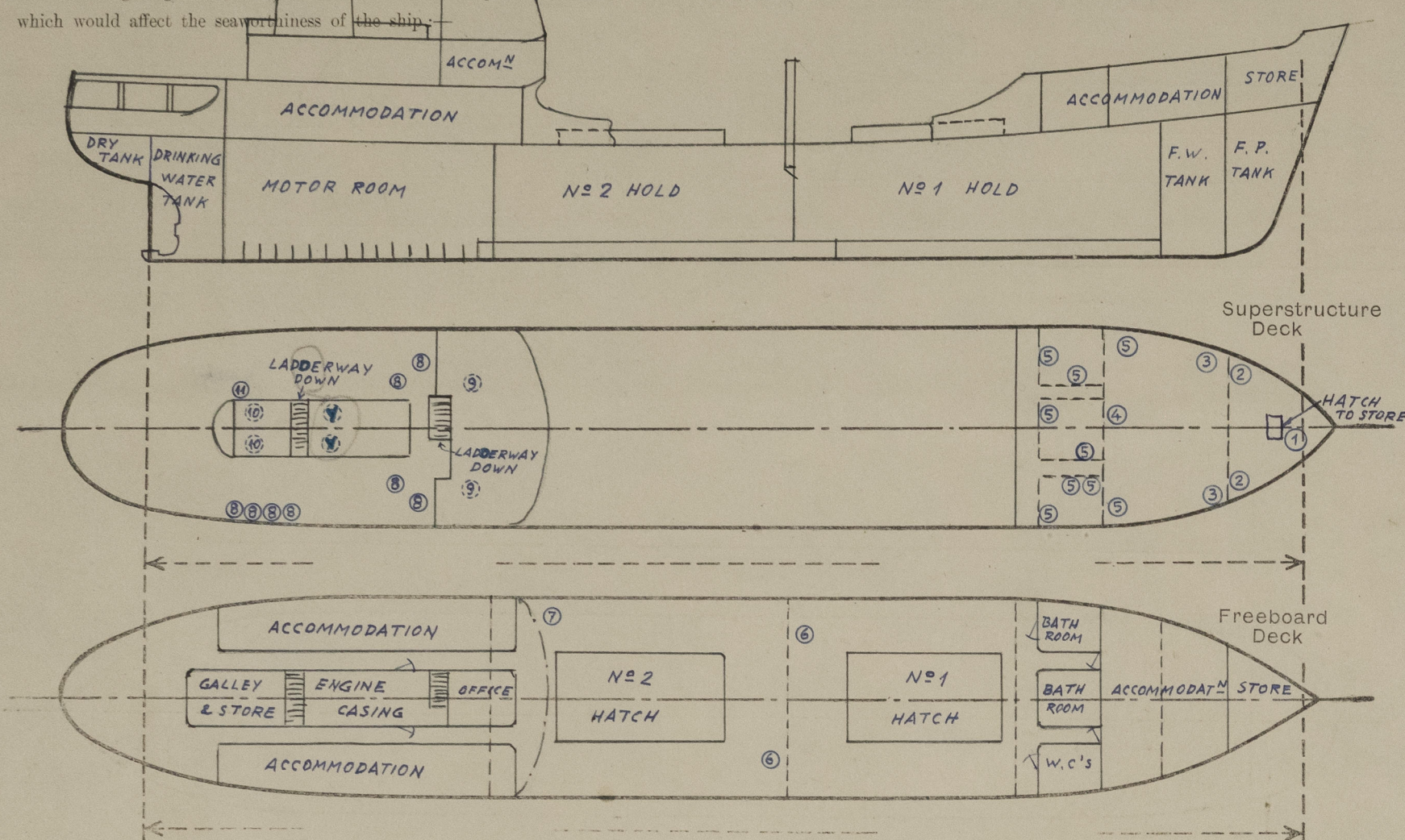
	Coaming	Plating	Stiffeners	Spacing	End Attachments of Stiffeners	Size of Openings	Height of Sills	Height of Casings
Poop Bulkhead ...	6 mm	5 mm	50 x 4 mm flats	650 mm	WELDED TOP & BOTTOM	✓	✓	2100 mm
Raised Quarter Deck Bulkhead ...			✓					
Bridge, After Bulkhead ...			✓					
Bridge, Forward Bulkhead ...			✓					
Forecastle Bulkhead (WITH RECESSES)	5 mm	4.5 mm	50 x 4 mm flats	500 mm	WELDED TOP & BOTTOM	2@ 600 x 1900 2@ 650 x 1900	320 mm	2100 mm
Trunk, Aft ...			✓					
Trunk, Forward ...			✓					
Exposed Machinery Casings on Freeboard or Raised Quarter Decks ...	5 mm	5 mm	70 x 5.5 mm flats	585 mm	WELDED TOP & BOTTOM	2@ 700 x 1300	610 mm	2100 mm
Exposed Machinery Casings on Superstructure Decks ...	5 mm	4 mm	50 x 5 mm flats	585 mm	WELDED TOP & BOTTOM	✓	✓	2100 mm
Machinery Casings within Superstructures not fitted with Class I Closing Appliances ...			NONE					
Deckhouses on Flush Deck Ships ...			NONE					

Particulars of Closing Appliances (state if capable of being manipulated from both sides).

Poop Bulkhead ...	OPEN POOP + Bridge
Raised Quarter Deck Bulkhead ...	✓
Bridge, After Bulkhead ...	✓
Bridge, Forward Bulkhead ...	✓
Forecastle Bulkhead ...	WOOD DOORS CAPABLE OF BEING OPERATED FROM BOTH SIDES. ✓
Exposed Machinery Casings on Freeboard or Raised Quarter Decks ...	STEEL HINGED DOORS CAPABLE OF BEING OPERATED FROM BOTH SIDES. ✓
Exposed Machinery Casings on Superstructure Decks ...	✓
Machinery Casings within Superstructures not fitted with Class I Closing Appliances ...	✓
Deckhouses on Flush Deck Ships ...	✓

PARTICULARS OF PROTECTION TO OPENINGS, ETC.

The following diagrams should be used to indicate the positions of cargo and coaling hatchways, gangway, cargo and coaling ports, ventilators, companionways, etc., which would affect the seaworthiness of the ship.



Particulars of fillay, funnel and ventilator coamings, engine room skylight and other openings in machinery casing tops and their means of closing :-

MOTOR CASING OF STRONG STEEL CONSTRUCTION, EFFICIENTLY STIFFENED, 2100 mm ABOVE POOP DECK
FUNNEL STEPPED DIRECTLY ON CASING TOP. ENGINE ROOM & GALLEY SKYLIGHTS ON CASING TOP OF
STRONG CONSTRUCTION WITH HINGED STEEL FLAPS EFFICIENTLY SECURED.

VENTILATORS - 2 @ 500 mm DIA x 5 mm THICK x 1350 mm ABOVE CASING TOP, EFFICIENTLY SUPPORTED.

Particulars of Flush Bunker Scuttles :-

NONE

Particulars of Companionways :-

NONE

Particulars of Ventilators in exposed positions on freeboard and superstructure decks :-

DIST. NUMBER	No	M/M DIA	M/M THK.	M/M HGT.	POSITION	LEADING TO
1	1	200	7.5	965	F'CLE DECK	BOS'UNS STORE
2	2	200	G.N.	460	" "	" "
3	2	200	7.5	965	" "	CREWS ACCOM
4	1	300	8.5	965	" "	HOLD No 1
5	9	200	5.0	300	M.V. "	CREWS ACC. W.C'S ETC.
6	2	300	8.5	965	MAIN DECK	HOLDS No 1 & 2
7	1	300	8.5	965	" "	HOLD No 2
8	8	200	5.0	300	M.V. POOP DECK	ACCOMMODATION
9	2	200	5.0	300	M.V. BRIGDE DECK	"
10	2	200	5.0	300	M.V. CASING TOP	OFFICERS BATH
11	1	200	G.N.	460	POOP DECK	GALLEY

VENTILATORS EFFICIENTLY SUPPORTED AS REQUIRED
COWL VENTILATORS SUPPLIED WITH WOOD PLUGS AND
CANVAS COVERS.

G.N. VENTS SUPPLIED WITH HINGED STEEL W.T. COVERS.

Particulars of Air Pipes in exposed positions on freeboard, raised quarter, or superstructure decks :-

No	POSITION	M/M SIZE	LEADING TO
1	FORECASTLE DECK	73 x 83	FORE PEAK TANK
2	"	60 x 70	F.W. TANK
2	"	60 x 70	No 1 D.B. TANK
2	MAIN DECK	73 x 83	No 2 D.B. TANK
2	"	47 x 57	COFFERDAM
2	"	73 x 83	No 3 D.B. TANK
2	"	73 x 83	No 4 D.B. TANK
2	POOP DECK	60 x 70	DRINKING WATER TANK
1	MAIN DECK	47 x 57	RUDDER TRUNK
1	"	47 x 57	DRY TANK AFT

AIR PIPES TO OIL TANKS FITTED WITH PERFORATED PLATES
AND HINGED COVERS REMAINDER OF AIR PIPES
FITTED WITH HINGED COVERS
ALL HINGED COVERS SECURED BY SPRING CLIPS
AIR PIPES 915 mm HIGH ON MAIN DECK AND 460 mm HIGH
ON POOP AND FORECASTLE DECKS.

Particulars of Gangway Cargo and Coaling Ports :-

NONE

Particulars of Scuppers and Sanitary Discharge Pipes :-

SCUPPERS FROM POOP & FORECASTLE DECKS DRAIN ON FREEBOARD DECK. FREEBOARD DECK
SCUPPERS 64 mm DIA, 5 IN No (P & S) DRAIN DIRECTLY OVERBOARD / AT LOWER ENDS.
SCUPPERS FROM CREW'S QUARTERS DISCHARGE TO MOTOR ROOM BILGE WITH SELF CLOSING COCKS
ALL SANITARY DISCHARGES ARE FROM SPACES ABOVE FREEBOARD DECK AND DISCHARGE TO A
COLLECTOR PIPE WITH NON-RETURN VALVE AT SHIPS SIDE L.W.L.

Particulars of Side Scuttles :-

SIDE SCUTTLES FITTED ON SHELL IN WAY OF FORECASTLE AND POOP OF BRASS STRONGLY
CONSTRUCTED AND FITTED WITH HINGED DEADLIGHTS.

Vertical distance of Sill of lowest Side Scuttle above top of keel 4.5 METRES

Particulars of Guard Rails :-

GUARD RAILS ON FORECASTLE DECK 1000 mm HIGH, 4 RAILS
STANCHIONS SPACED 1500 mm APART.

Particulars of Gangways, Lifelines, etc. :-

LIFELINES PROVIDED (P. AND S.) FROM FORECASTLE TO POOP.

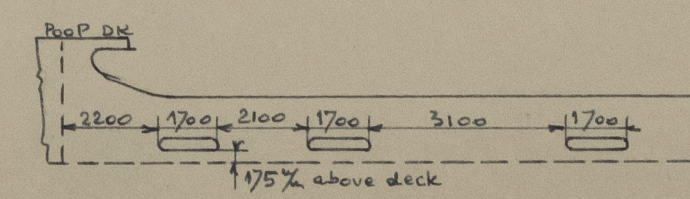
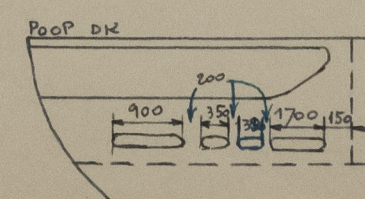
Particulars of Freeing Arrangements.

	Length of Bulwark	Height of Bulwark	Size of Freeing Ports	Number each side	Area each side	Rule area each side
After Well ...	5.90 m.	1100 mm	1 @ 1700 x 250 mm 1 @ 900 x 250 mm 2 @ 350 x 250 mm	FOUR	.792 m ²	.783 m ²
Forward Well ...	18.72 m. 19.305	1100 mm	1700 mm x 250 mm	THREE	1236 m ²	1.192 m ²

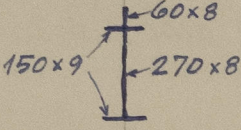
State position of each freeing port ... { After Well :- } SEE SKETCH
(F. and A. position and height above deck edge) { Forward Well :- }

State whether the freeing ports are fitted with shutters, bars, or rails, and give particulars of such :- VERTICAL BARS 3 IN NO SPACED 125% APART.

Additional area where sheer is less than standard.



PARTICULARS OF PROTECTION TO OPENINGS, ETC.

HATCHWAYS ON FREEBOARD AND SUPERSTRUCTURE DECKS.											
			← MAIN DECK →		F'CLE DECK						
Description of Hatchway			Nº 1	Nº 2	HATCH TO STORE						
Dimensions of Hatchway			5850 x 3500		585 x 800						
COAMINGS	{	Height above Deck ...	900 mm		610 mm						
		Thickness {	Sides ...	10 mm	7 mm						
			Ends ...	10 mm	7 mm						
		Stiffeners ...	180 x 60 flange plate		✓						
Brackets, Stays ...	180 x 9 bulb plate		✓								
HATCH BEAMS	{	Number ...	3								
		Spacing ...	1460 mm								
		Scantling and Sketch ...			✓						
Bearing Surface ...											
FORE AND AFTERS	{	Number ...									
		Spacing ...									
		Unsupported Lengths ...									
		Scantling* and Sketch ...	← NONE →		✓						
Bearing Surface ...											
HATCH COVERS	{	Material ...	YANGWOOD		HINGED STEEL						
		Thickness ...	65 mm		W.T. COVER						
		How fitted ...	F. & A. ✓		RUBBER						
		Bearing Surface ...	65 mm		PACKING SECURED WITH TUGGLES						
Spacing of Cleats ...	610 mm										
Number of Tarpaulins...	2										
*Are wood fore and afters steel shod at all bearing surfaces? ✓											
Are battens and wedges efficient and in good condition? YES											
Are tarpaulins in good condition and in accordance with rule requirements? YES											
Are lashings provided in accordance with rule requirements? YES											

Particulars of any special features :—

