

GROSS AREA 28 1/2' x 33 1/2' = 6' 63' 39 FT
NET AREA 27 1/2' x 32' = 6' 12' 56 FT

WELDING NOTES

1. WELDING IN ACCORDANCE WITH LLOYDS RULES FOR THE APPLICATION OF ELECTRIC ARC WELDING TO SHIP CONSTRUCTION.
2. ALL CONNECTIONS ELECTRIC WELDED WITH EXCEPTION OF SIDE FRAMES TO SHELL PLATING AND RIDER PLATES OF HATCH SIDE GIRDERS AND END BEAMS WHICH ARE RIVETED.

PRINCIPAL DIMENSIONS.

LENGTH B.P.	416 FT 0 IN
BREADTH MOULDED	56' 10 3/8"
DEPTH MOULDED TO UPPER DECK	37' 4"
DEPTH MOULDED TO 2ND DECK	28' 7"
DEPTH TO LENGTH	11.14

CLASS

LLOYDS REGISTER OF SHIPPING #100 A1
"WITH FREEBOARD"
SCANTLING SUITABLE FOR A MOULDED DRAUGHT OF 26'10".

* EQUIPMENT & T.

- 2 STOCKLESS BOWER ANCHORS
- 1 STOCKLESS STRENGTH ANCHOR
- 225 FATHOMS STUD CHAIN CABLE
- 90 FATHOMS
- 120 FATHOMS TOWLINE
- 2 HAWSERS EACH 30 FATHOMS
- 2 WARPS EACH 30 FATHOMS

2 5/16" DIA
(5 1/8" SWR) 9/12
(5 1/8" SWR) 9/24
(2 3/4" SWR) 9/12
(2 1/2" SWR) 9/12

* EQUIPMENT SUPPLIED IS IN ACCORDANCE WITH WAR REDUCTION OF EQUIPMENT REQUIREMENTS.

SECTION OF TYPICAL HATCH SIDE GIRDER

TANK TOP PLATING 2 1/2" CEILING FOR 2'-0"
OUTSIDE THE HATCH LINE IN NO. 2, 3 AND 4
HOLDS - ALL CEILED IN NO. 1 AND 5 HOLDS.
TANK MARGIN BRACKETS CEILED IN
ALL HOLDS

RIDER PL. 1/4" x 1/4" FRS 47 TO 59 4.18 TO 51 INCL.
RIDER PL. 1/4" x 1/4" FRS 41 TO 53 INCL.
RIDER PL. 1/4" x 1/4" FRS 17 TO 21 INCL.

MARGIN PLATE - .54" HOLDS AND ENG. RM. - .60" IN BOILER SP.
TANK TOP PLATING - .44" TO .40" IN HOLDS - .52" IN ENG. RM. - .58" IN BOILER SP.

4.10% OK F.P.R. IN THE FLAT
PORTION OF SHIP FOR
DRYDOCKING - SEE DRG NO.
11261-511-3-2

S.S. OCEAN VETERAN
HULL NO. 17

TODD-CALIFORNIA SHIPBUILDING CORPORATION

DESIGN AND ENGINEERING BY
GIBBS & COX, INC.
NEW YORK

MIDSHIP SECTION

SCALE 1/2" = 1' FOOT
DRAWN BY D.M.B. L.M.K.
TRACED BY J.L.H.E.S.
CHECKED BY G.D.M.K.

DATE NOVEMBER 25 1940
APPROVED *[Signature]*
APPROVED *[Signature]*
APPROVED *[Signature]*

DR. 11261-511-11-2

VAULT # 5192

5-11-113

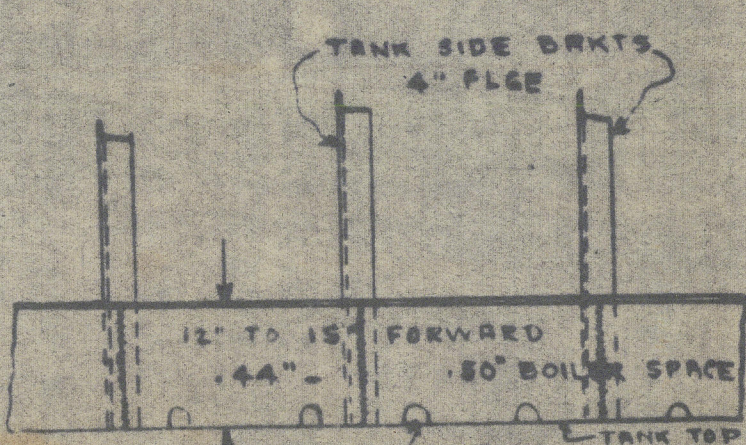
SIDE SHELL 64" WITH 30" SPACING
TO .40" AT ENDS.

SIDE SHELL 25% ABOVE END
THICKNESS .58" IN WAY OF
PAINTING IN LIEU OF STRINGER
FOR A DISTANCE AFT OF RULE
POSITION OF COLLISION END
EQUAL TO 10% L OF VESSEL

SIDE SHELL 25% ABOVE
END THICKNESS .58" IN WAY
OF FOREPEAK TANK IN LIEU
OF STRINGER CONNECTIONS
TO SHELL.

BOSS PLATING .62"

BREADTH OF STRINGER PLATES
UPPER DK. 65"
2ND DK. 108"



SKETCH OF GUSSET PLATE

BILGE KEEL CUT FROM
10" x 5 1/2" x 27 1/2" B.A.

BOTTOM SHELL 64" WITH 30" SPACING TO .50" AT ENDS
TWO FRAMES OF SHELL (EXTRA WIDE) NEXT TO KEEL TO BE 10%
ABOVE RULE THICKNESS .67" FROM 1/2 L FORWARD TO
COLLISION BULKHEAD

SOLID FLOORS ON EVERY FRAME IN ENGINE ROOM - UNDER BOILER STOODS
UNDER BULKHEADS AND FORWARD OF 1/2 L - PARTIAL SOLID FLOORS TO
LONGITUDINAL IN WAY OF THRUST. SOLID FLOORS ON EVERY 4TH FRAME
ELSEWHERE (= 10'-0" MAXIMUM SPACING)