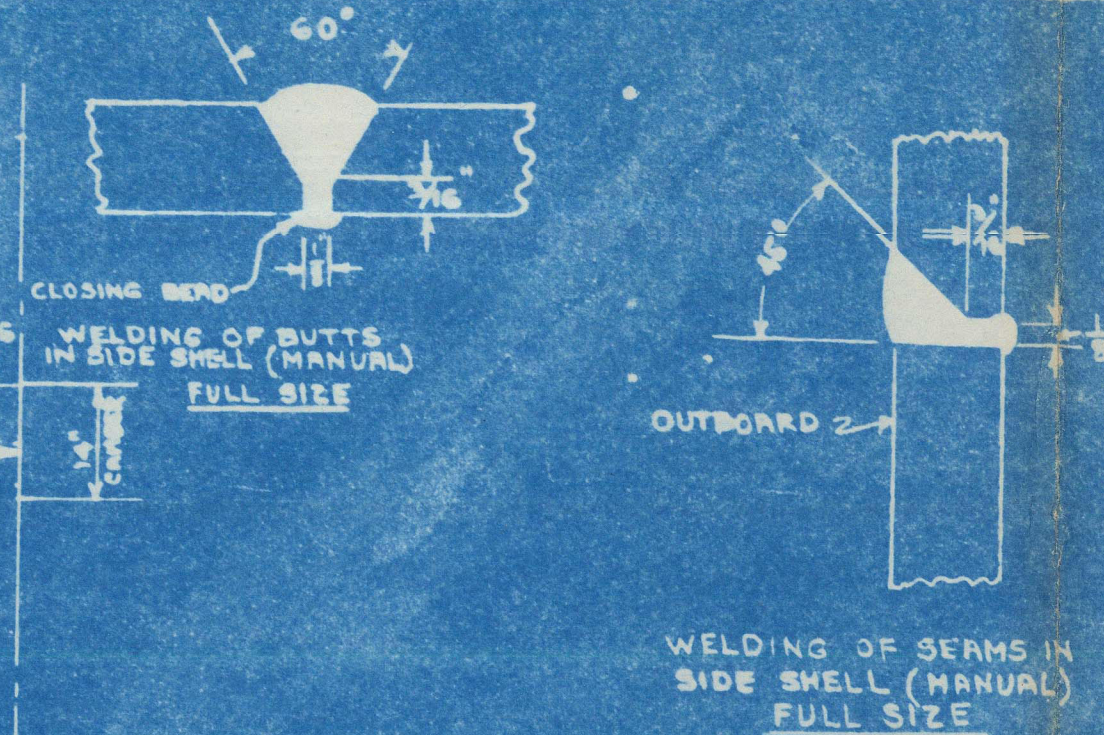


CROSS AREA 27 1/2' X 33 1/2' = 916.50 SQ. FT.
NET AREA 27 1/2' X 32' = 880.00 SQ. FT.

WELDING NOTES

INNER BOTTOM BUTTS: V WELDS.
MARGIN PLATE TO SHELL: SEE DETAIL.
CENTER GIRDER 3/4" CONTINUOUS TOP AND BOTTOM.
SIDE GIRDER 5/16" CONTINUOUS TOP AND BOTTOM.
IN ENGINE ROOM.
FLOORS 1/2" CONTINUOUS BOTH SIDES.

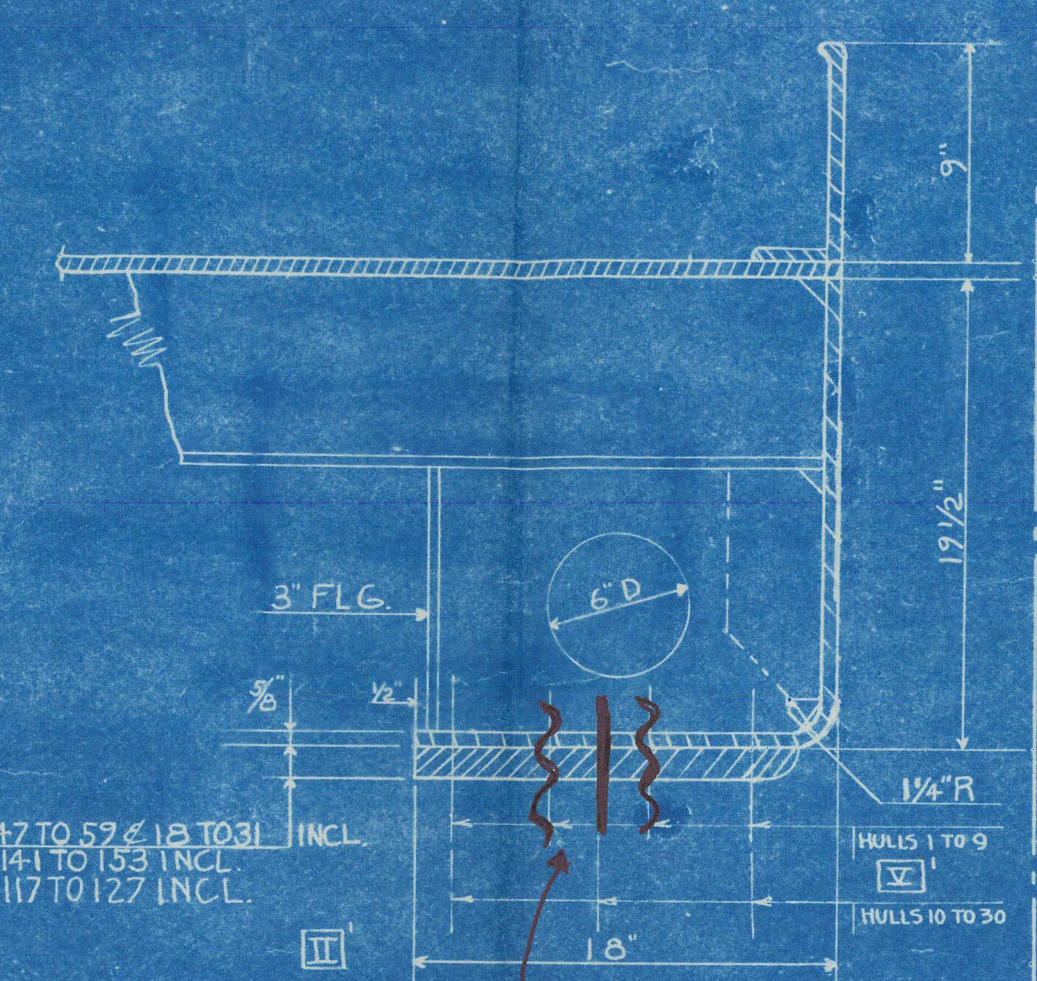


STERN FRAME AS PER DETAIL PLAN
STEM BAR 10" X 2 1/2" TO L.W.L.
PLATE STEM ABOVE L.W.L.
RUDDER AS PER DETAIL PLAN
FOR STEEL C.L. BULKHEADS SEE
STRUCTURAL INBOARD PROFILE

EQUIPMENT

- 2 STOCKLESS BOWER ANCHORS EACH 7616 LBS
- 1 STOCKLESS STREAM ANCHOR 2660 LBS
- 225 FATHOMS STUD CHAIN CABLE 2 5/16" DIA
- 90 FATHOMS OF 5/8" SWR
- 120 FATHOMS TOWLINE 5/8" SWR
- 2 HAWSERS EACH 90 FATHOMS 2 3/4" SWR
- 2 WARPS EACH 90 FATHOMS 2 1/2" SWR

SECTION OF TYPICAL HATCH SIDE GIRDER

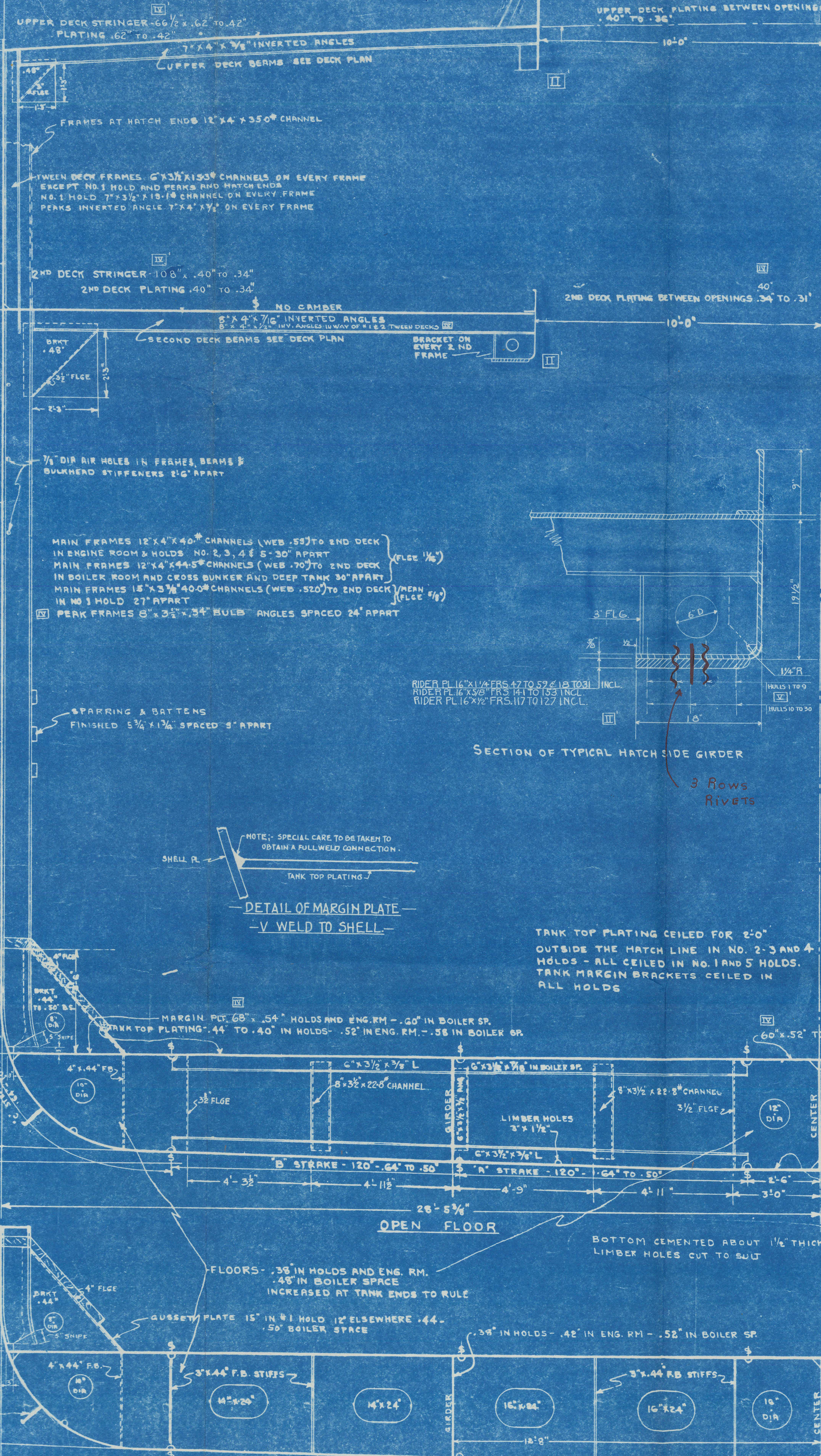


3 Rows Rivets

DETAIL OF MARGIN PLATE - V WELD TO SHELL -



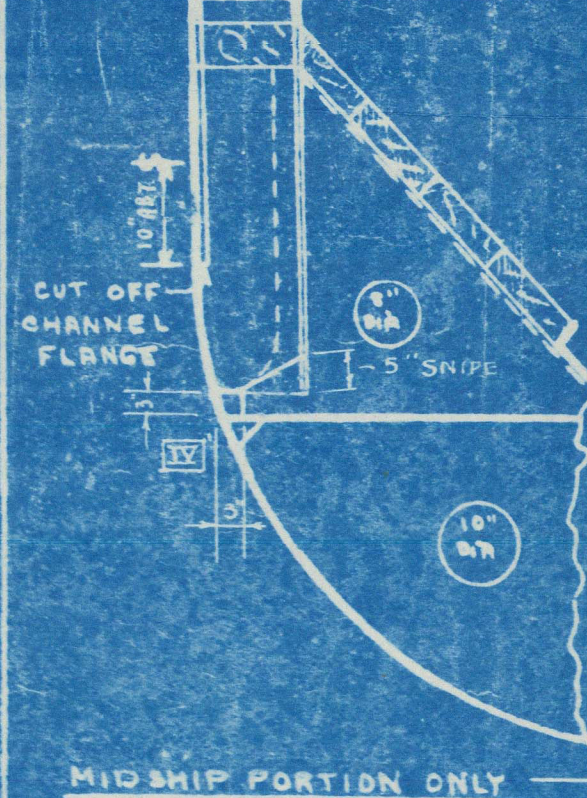
TANK TOP PLATING CEILED FOR 2'-0" OUTSIDE THE HATCH LINE IN NO. 2-3 AND 4 HOLDS - ALL CEILED IN NO. 1 AND 5 HOLDS. TANK MARGIN BRACKETS CEILED IN ALL HOLDS



SIDE SHELL 24" WITH 30 SPRINGS TO .46" AT ENDS.
SIDE SHELL 25% ABOVE END THICKNESS .58" IN WAY OF PARTING IN LIEU OF STRINGER FOR A DISTANCE APT OF RULE POSITION OF COLLISION BND. EQUAL TO 10% L OF VESSEL

SIDE SHELL 25% ABOVE END THICKNESS .58" IN WAY OF FOREPEAK TANK IN LIEU OF STRINGER CONNECTIONS TO SHELL.

BOSS PLATING .70"



SKETCH OF GUSSET PLATE

10" BULB PLATE, BILGE KEEL CUT FROM 10" X 32" X 1/4"

BOTTOM SHELL 24" WITH 30 SPRINGS TO .50" AT ENDS. TWO STRAKES OF SHELL (EXTRA WIDE) NEXT TO KEEL TO BE 10% ABOVE RULE THICKNESS .69" TO .58" FWD - .62" IN FOREPEAK .54" AFT

SOLID FLOORS ON EVERY FRAME IN ENGINE ROOM - UNDER BOILER STUOLS UNDER BULKHEADS AND FORWARD OF 1/6 L - PARTIAL SOLID FLOORS TO LONGITUDINAL IN WAY OF THRUST. SOLID FLOORS ON EVERY 4TH FRAME ELSEWHERE (10'-0" MAXIMUM SPACING)

PRINCIPAL DIMENSIONS

LENGTH B.P.	111'-0"
BREADTH MOULDED	56'-10"
DEPTH MOULDED TO UPPER DECK	37'-4"
DEPTH MOULDED TO 2ND DECK	28'-7"
DEPTH TO LENGTH	11.14

CLASS

LLOYDS REGISTER OF SHIPPING 100A1
"WITH FREEBOARD"
SCANTLINGS SUITABLE FOR A MOULDED DRAUGHT OF 26'-10", WHICH IS 18 INCHES IN EXCESS OF THAT FOR A C.B.S. VESSEL

NO.	REVISION	DESCRIPTION	DATE	BY	APPROVED
A	1	WELDING NOTES: INNER BOTTOM BUTTS V WELDS - MARGIN PLATE TO SHELL SEE DETAIL SKETCH	11-1-2	W. J. GIBBS	W. J. GIBBS
B	1	MAIN FRAMES ADDED FOR HOLD NO. 2 TO AGREE WITH DR 11261-511-3-2	11-1-2	W. J. GIBBS	W. J. GIBBS
I	1	IN "CLASS" NOTE, WORDING "EXTREME DRAUGHT" CHANGED TO "MODULO DRAUGHT" IN ACCORD WITH LLOYD'S REGISTER OF SHIPPING LETTER OF 11-2-2	11-1-2	W. J. GIBBS	W. J. GIBBS
II	1	HATCH COAMINGS & HATCH SIDE GIRDERS ON BOTH DECKS CHANGED TO SUIT MODULO DRAUGHT. HATCH SIDE GIRDER CORRECTED TO SUIT STRUCTURAL PLANS. LOCATION OF PART OF BOTH DECKS BEING NOTED.	11-1-2	W. J. GIBBS	W. J. GIBBS
III	1	EQUIPMENT 20 FATHOMS STUD CHAIN CABLE CHANGED TO 22.5 FATHOMS. STREAM ANCHOR CHANGED TO 2660 LBS. 5/8" SWR HAWSERS DELETED FORWARD 7' BENCH DELETED AFT OF THE ABOVE TO AGREE WITH ALLOWANCE LIST	11-1-2	W. J. GIBBS	W. J. GIBBS
IV	1	SHELL KEEL REVISED TO SUIT SHELL EXPANSION PLAN	11-1-2	W. J. GIBBS	W. J. GIBBS

TODD-BATH IRON SHIPBUILDING CORPORATION
TODD-CALIFORNIA SHIPBUILDING CORPORATION

DESIGN AND ENGINEERING BY
W. J. GIBBS & COX, INC.
SAN FRANCISCO, CALIF.

"S.S. Ocean Wanderer"
MIDSHIP SECTION
As Built

SCALE 1/2", 1 1/2", 12" = 1 FOOT
DRAWN BY D. M. L. L. MCK.
TRACED BY J. L. MCK.
CHECKED BY J. L. MCK.
DATE NOVEMBER 25, 1940
APPROVED W. J. GIBBS
APPROVED J. L. MCK.

DR 11261-511-11-2 VAULT 5192

Lloyd's Register of Shipping