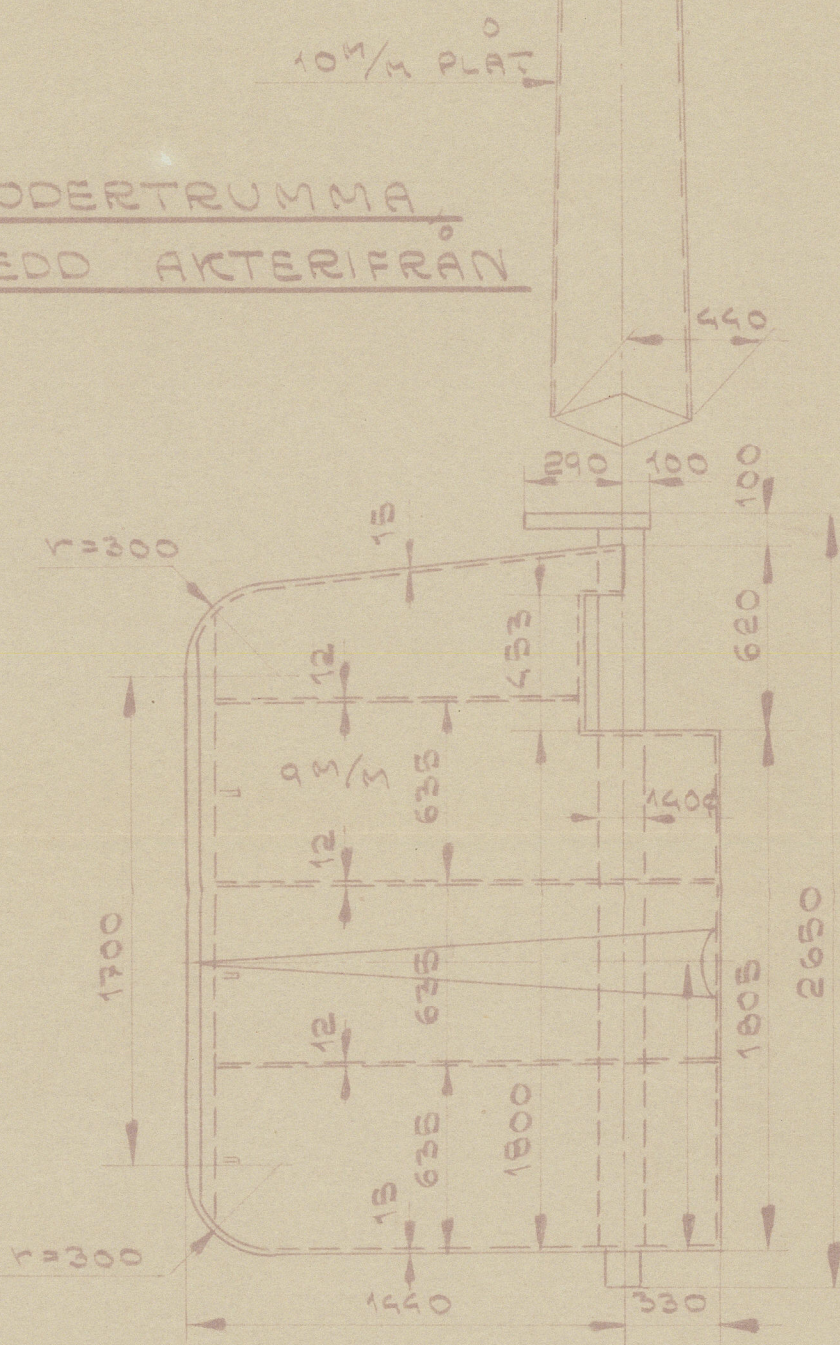
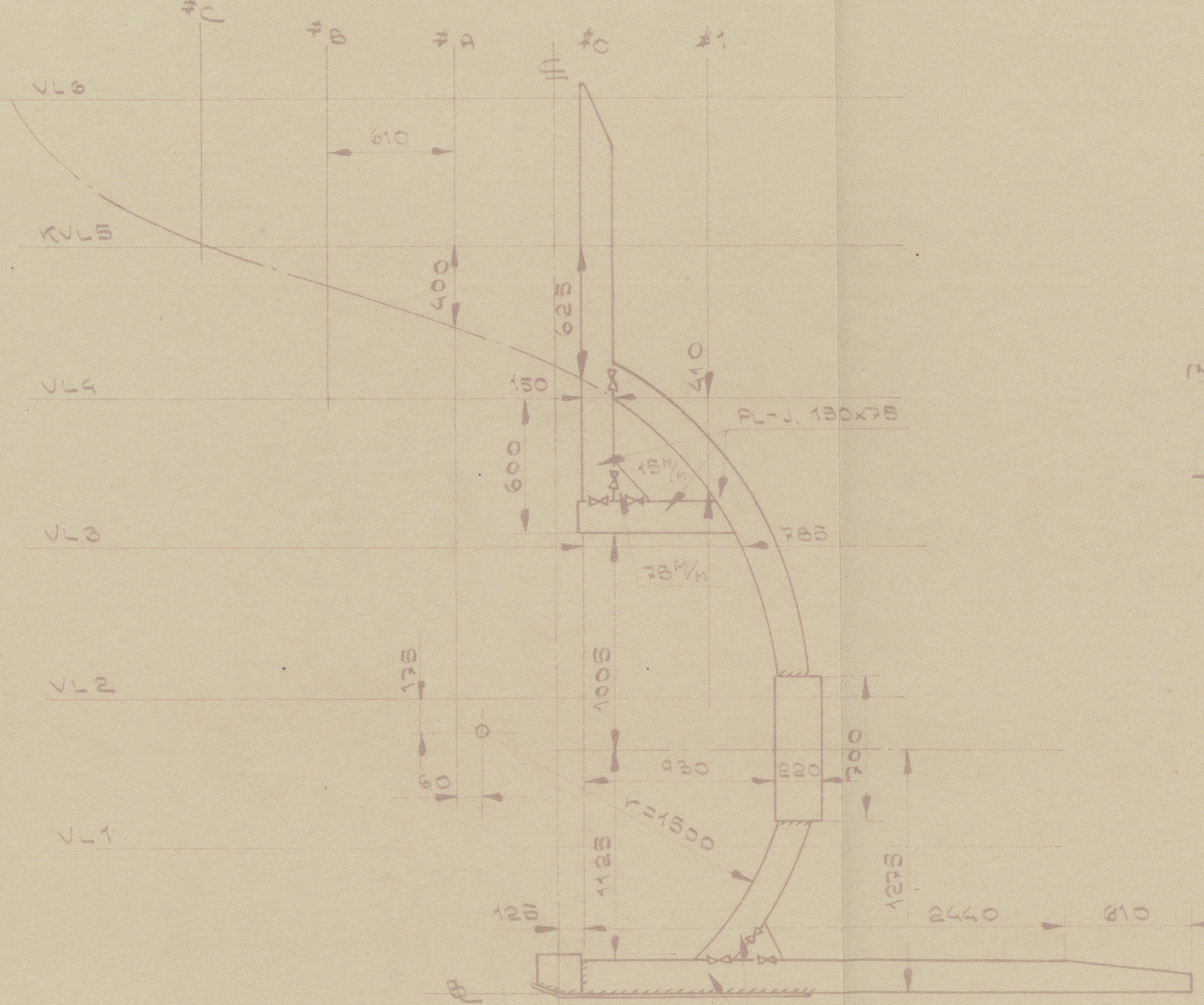


RODERAXELKOPPLINGAR:  
 NYB #359 - VARVETS TILLVERKN.  
 NYB #361 - SKIF - 226242  
 NYB #362 " " "  
 NYB #363 " " "  
 NYB #364 " " "  
 NYB #365 " " "

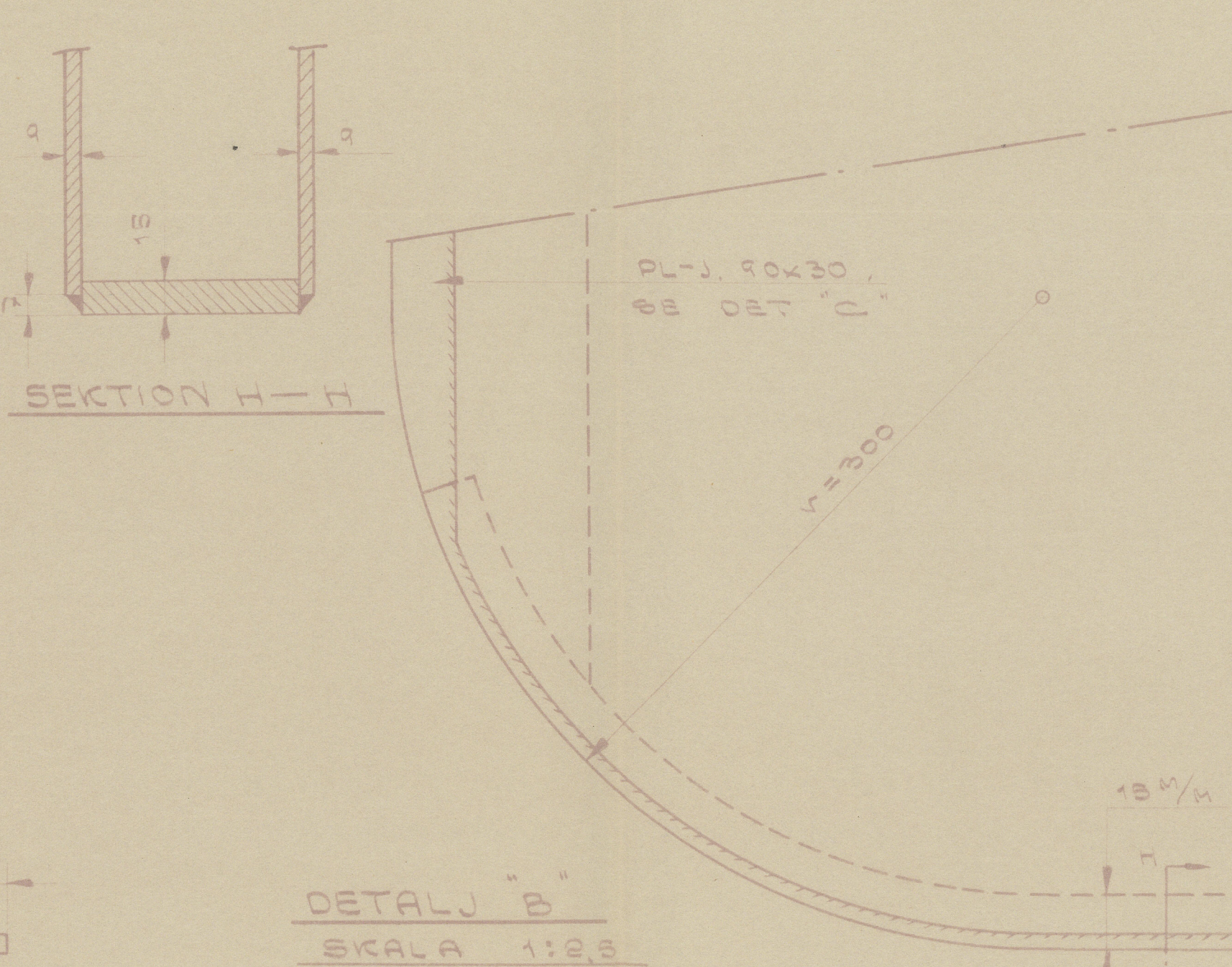
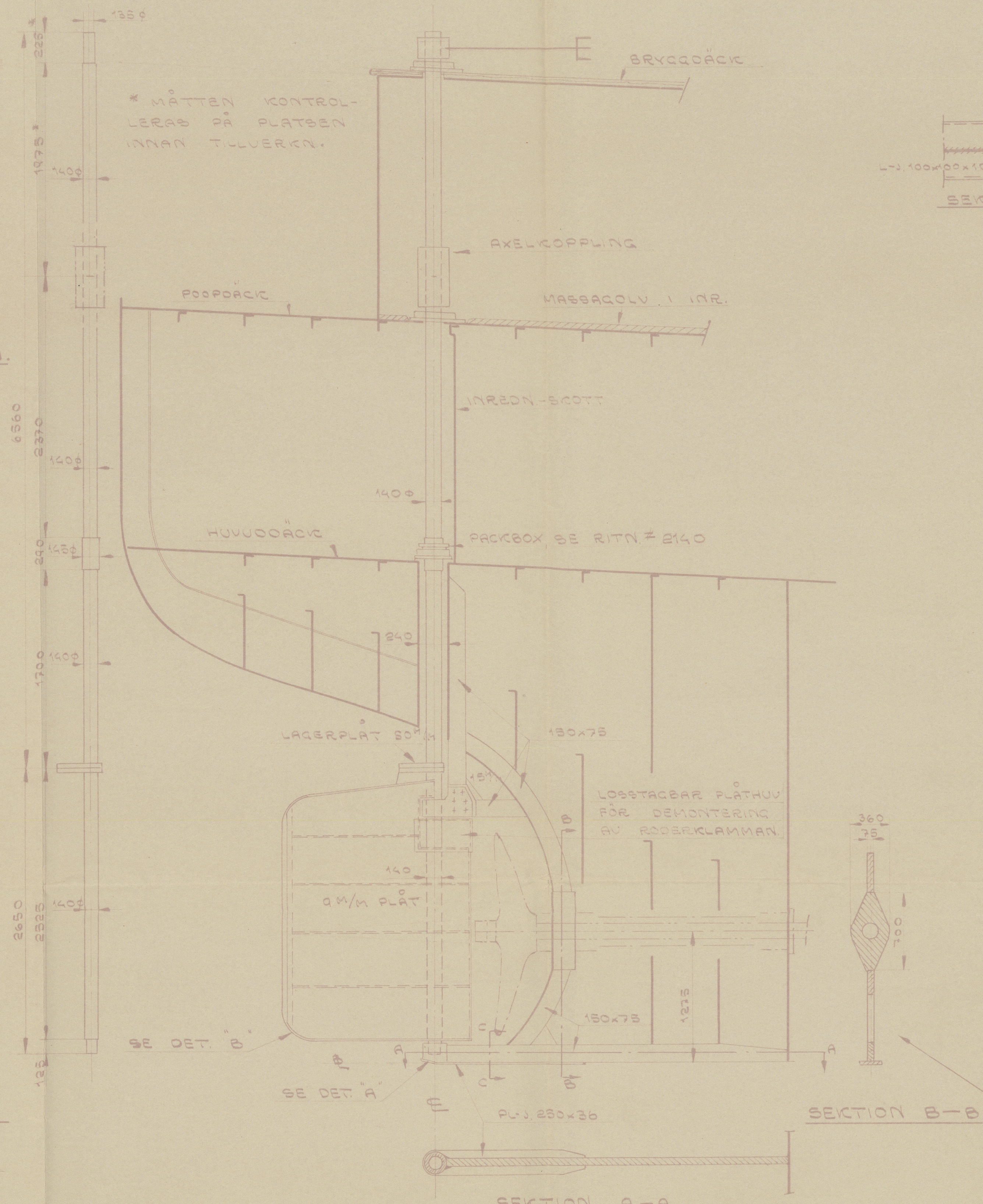
RODERTRUMMA  
 SEDD AKTERIFRAN



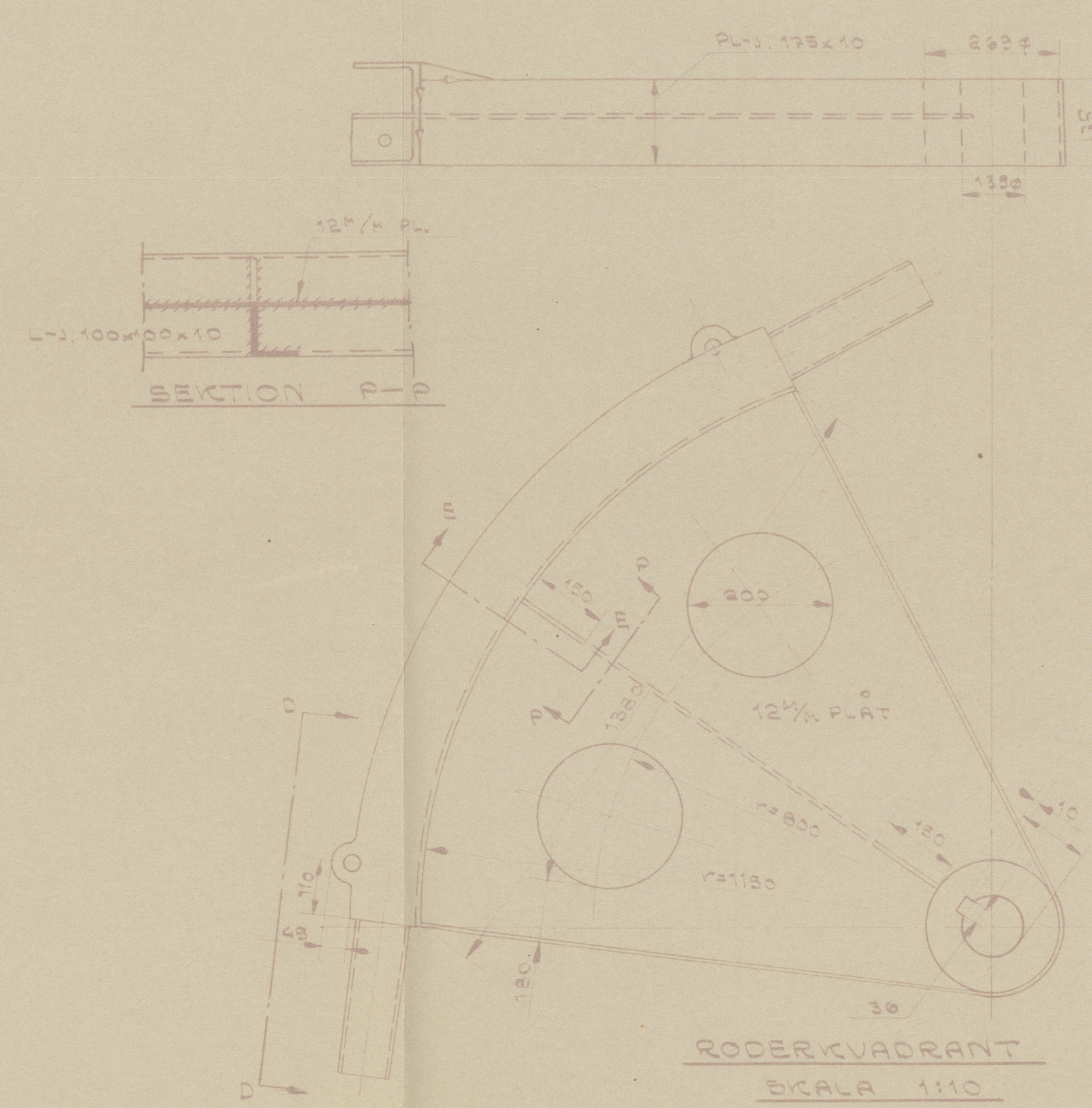
UTSLAG AV RODER



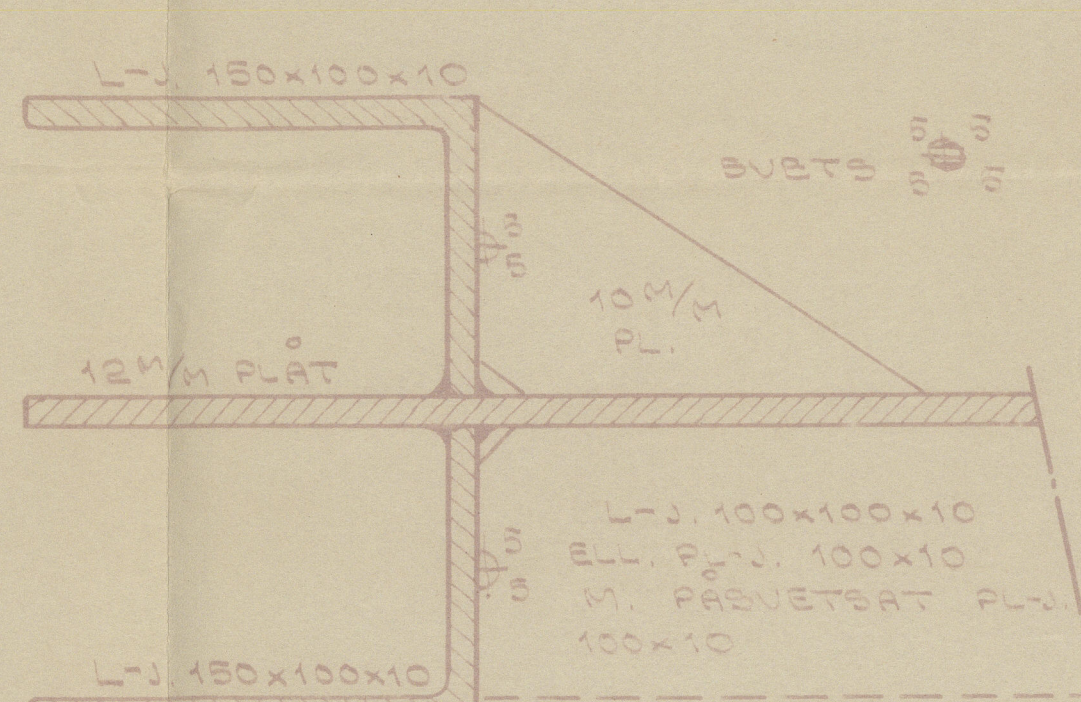
UTSLAG AV AKTERSTAV



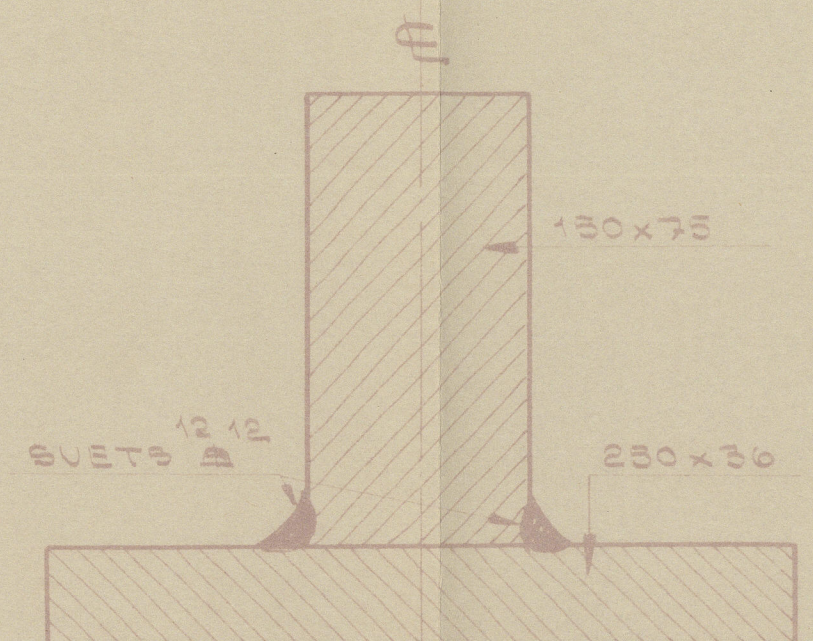
DETALJ B  
 SKALA 1:2,5



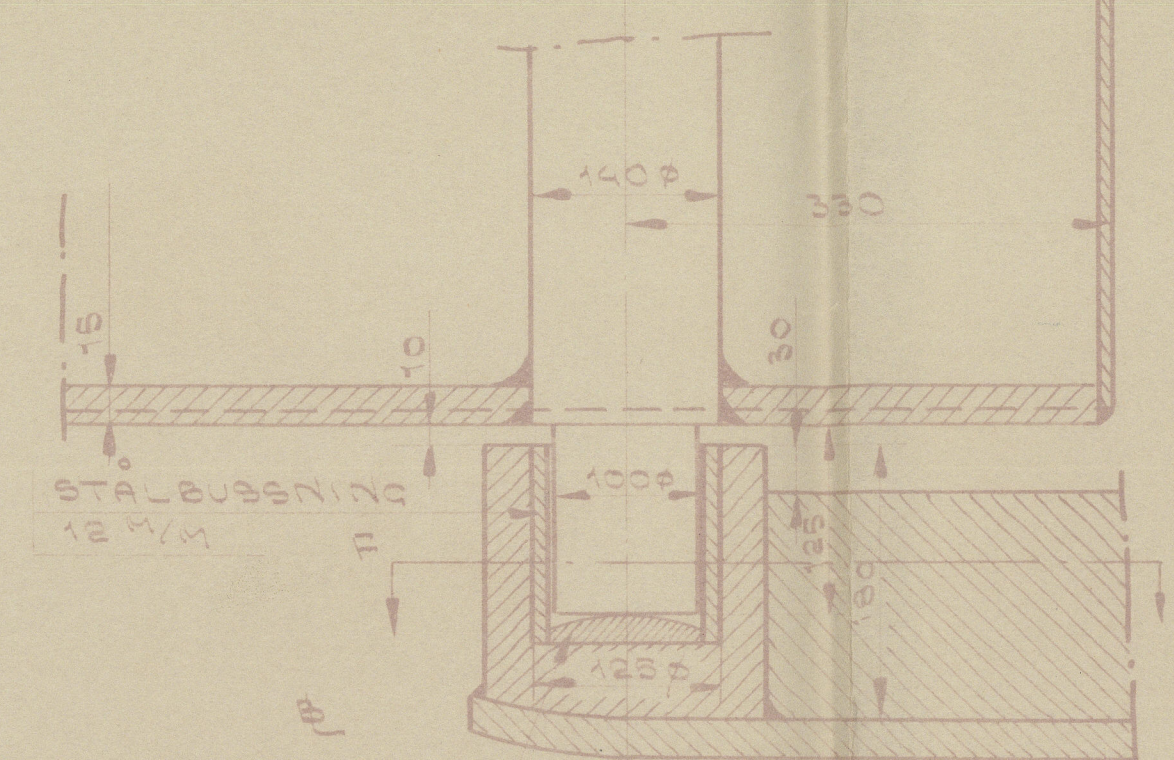
DETALJ C  
 SKALA 1:10



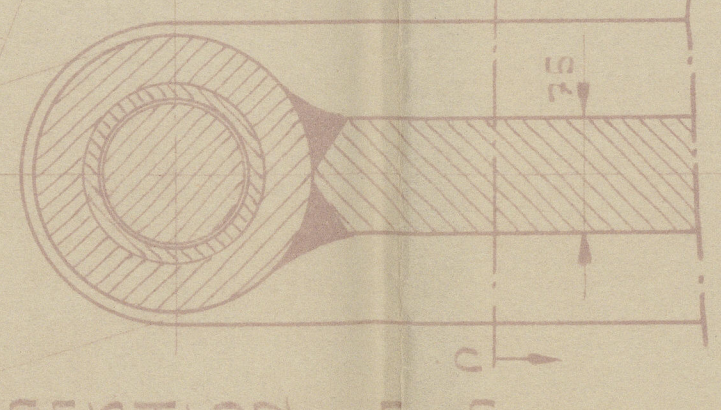
DETALJ D  
 SKALA 1:10



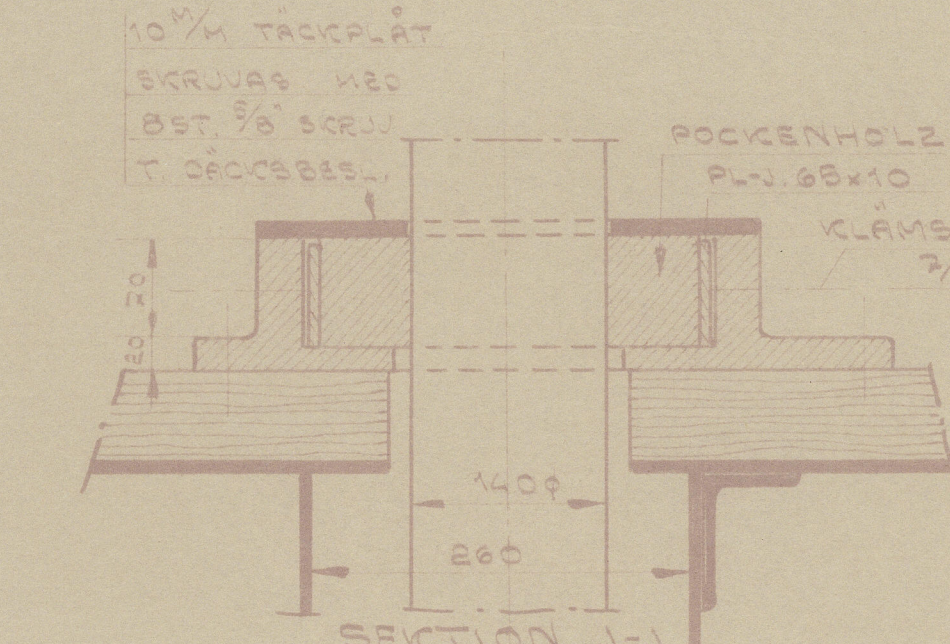
DETALJ E  
 SKALA 1:10



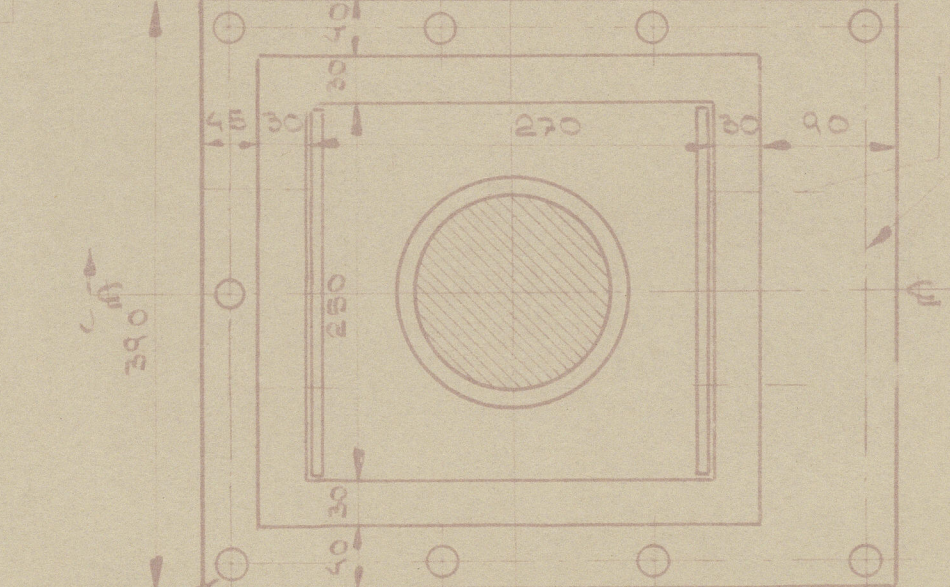
DETALJ F  
 SKALA 1:10



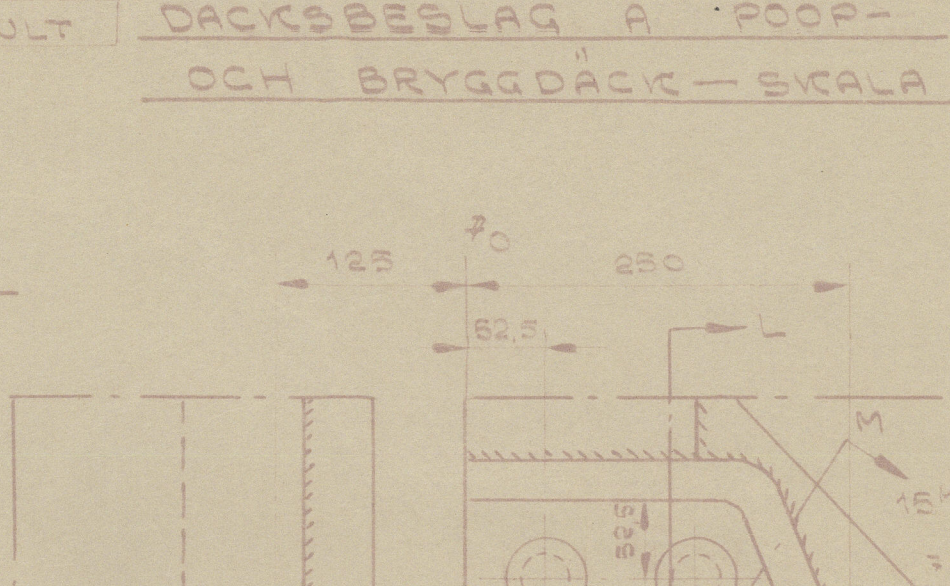
DETALJ G  
 SKALA 1:10



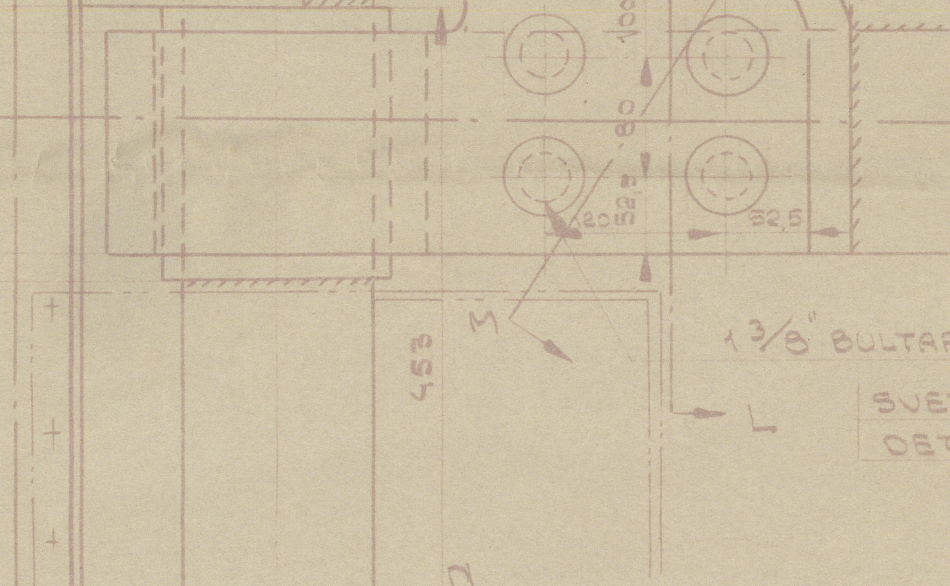
DETALJ H  
 SKALA 1:10



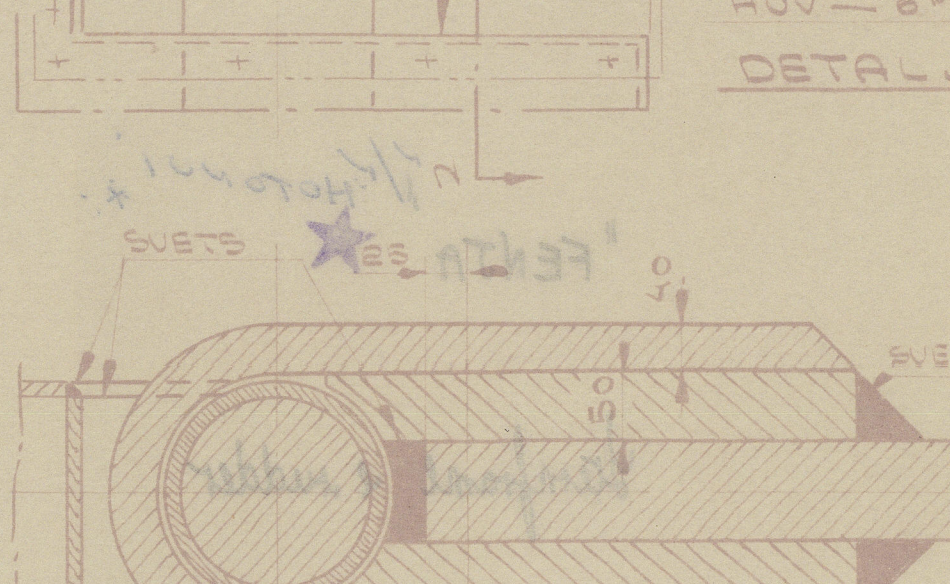
DETALJ I  
 SKALA 1:10



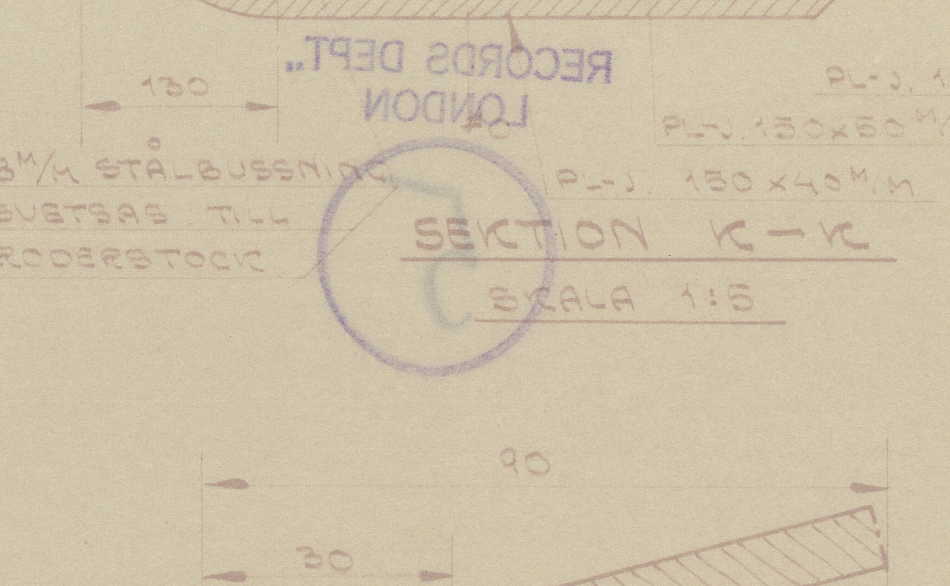
DETALJ J  
 SKALA 1:10



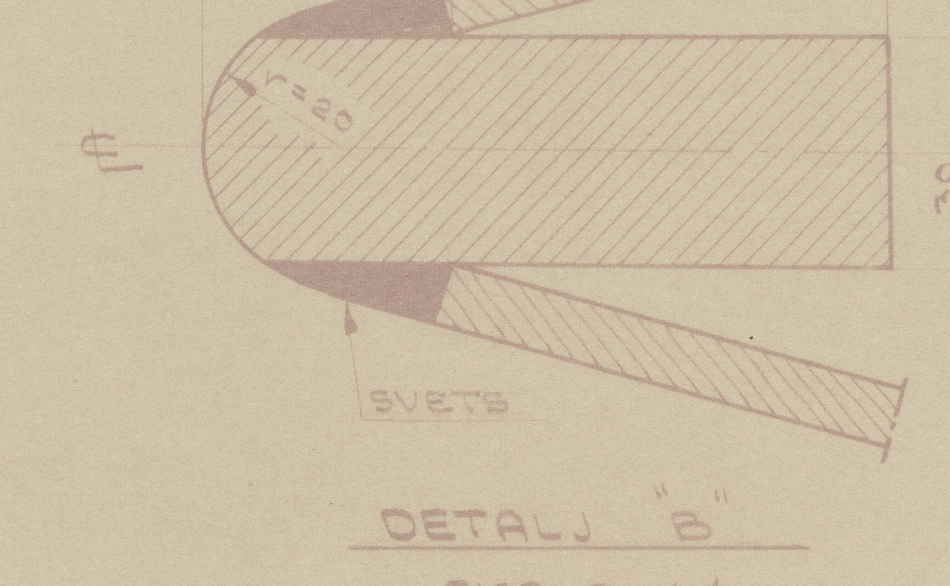
DETALJ K  
 SKALA 1:10



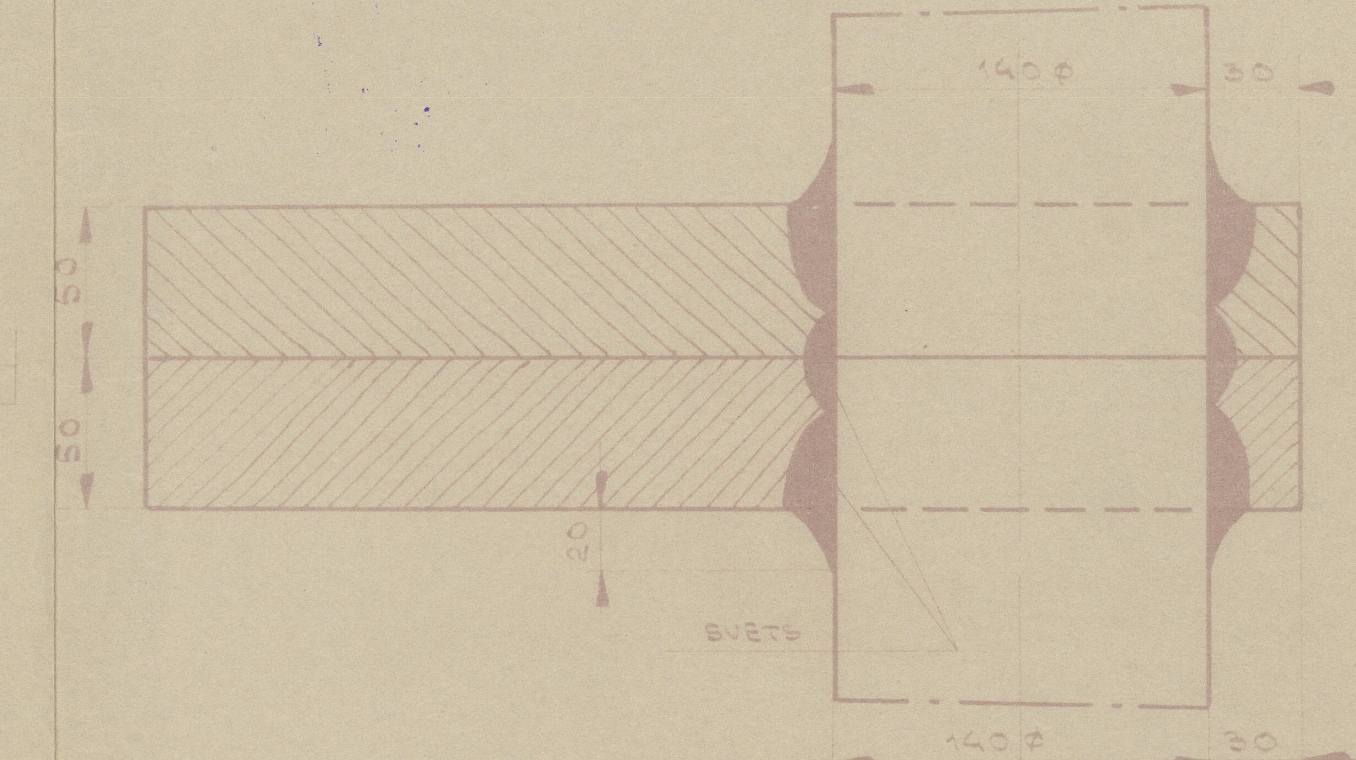
DETALJ L  
 SKALA 1:10



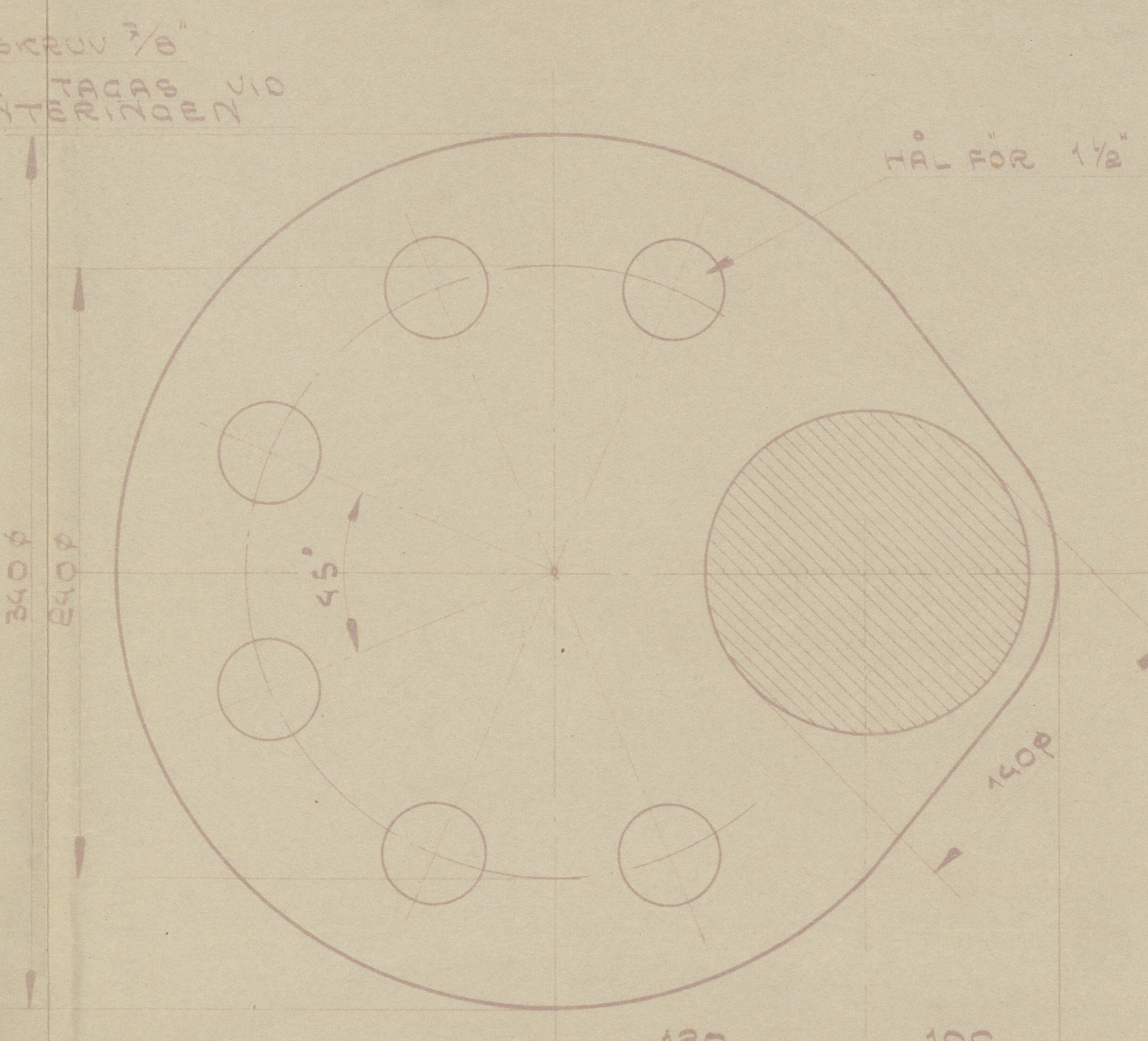
DETALJ M  
 SKALA 1:10



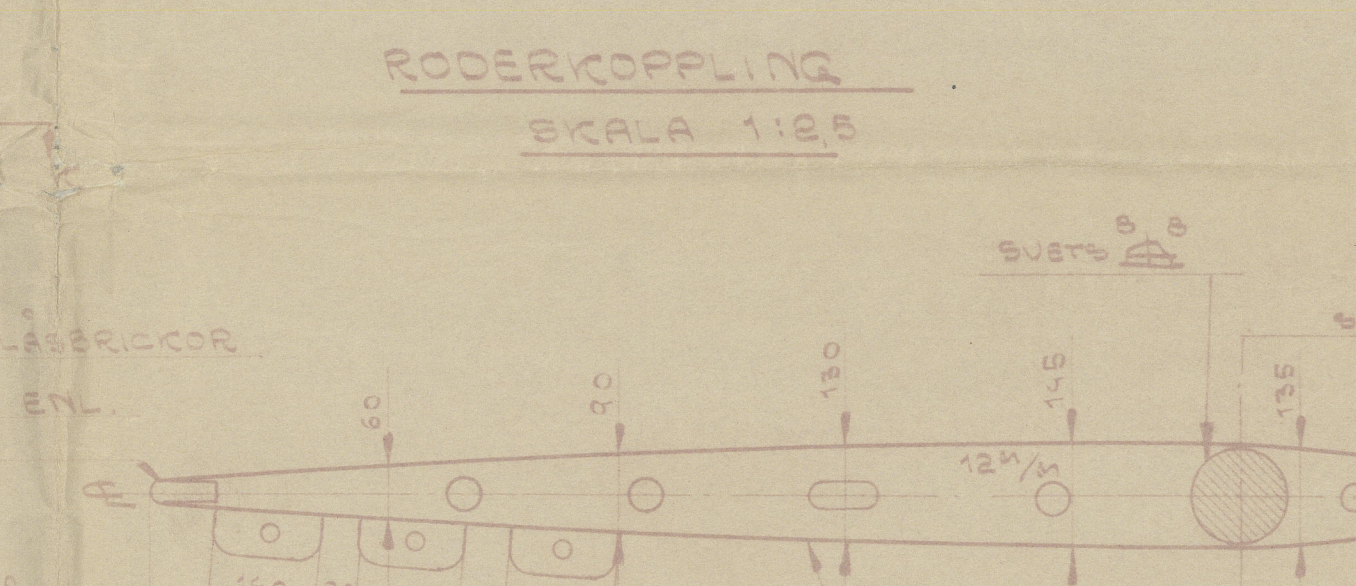
DETALJ N  
 SKALA 1:10



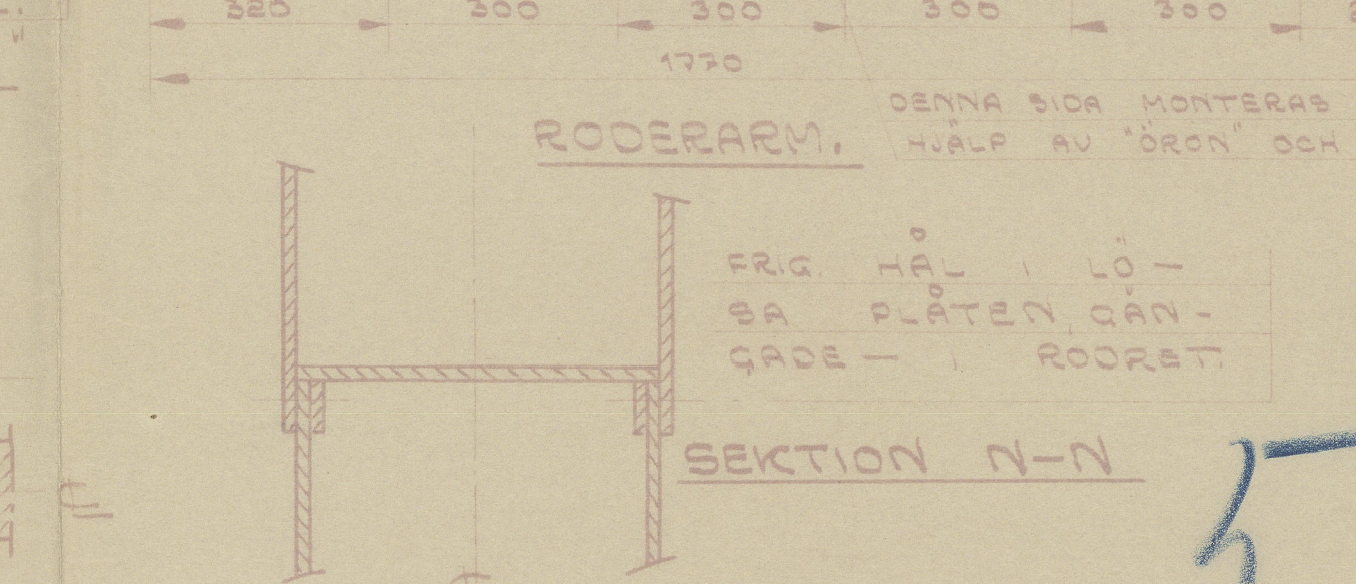
DETALJ O  
 SKALA 1:10



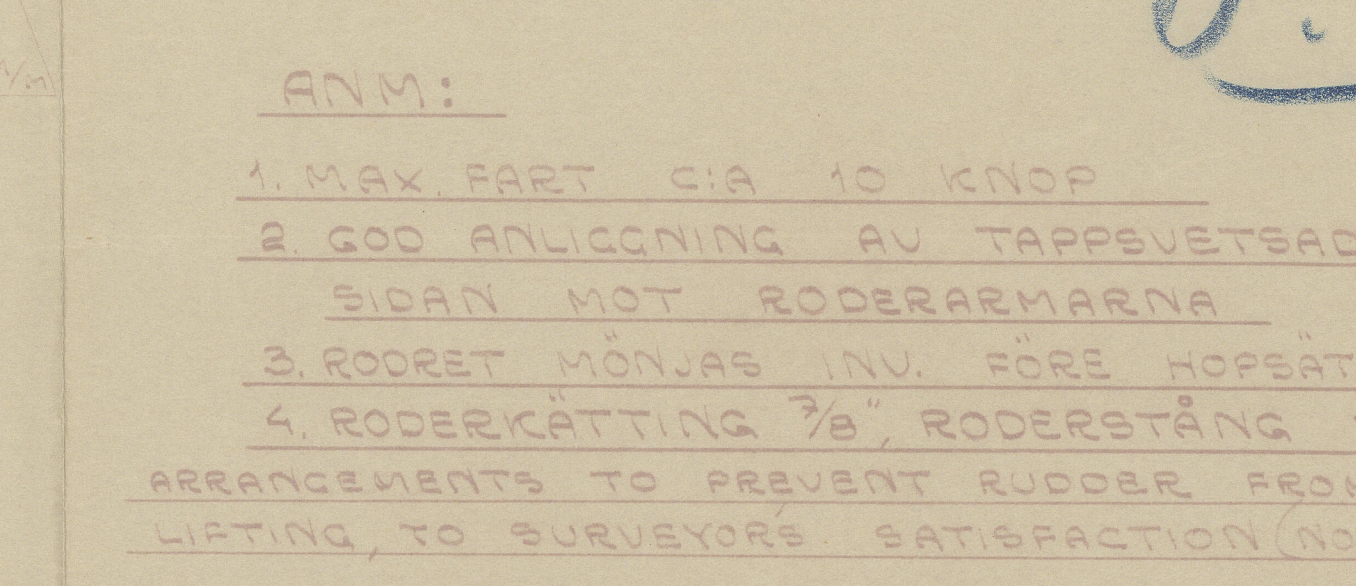
DETALJ P  
 SKALA 1:10



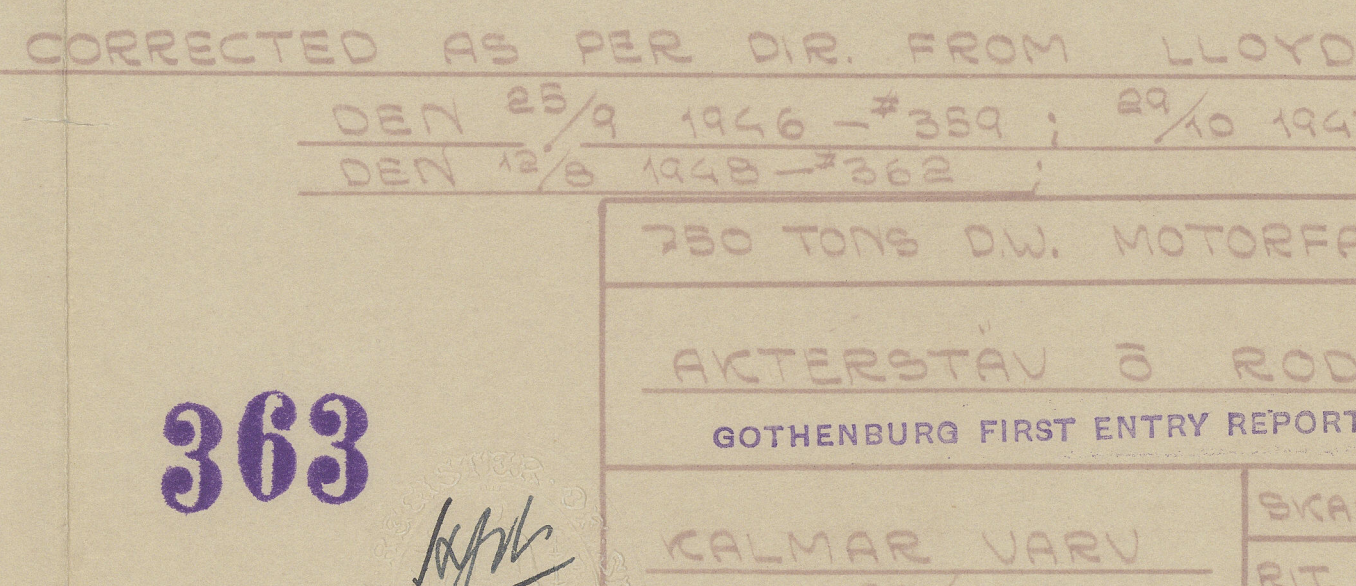
DETALJ Q  
 SKALA 1:10



DETALJ R  
 SKALA 1:10



DETALJ S  
 SKALA 1:10



DETALJ T  
 SKALA 1:10

ANM:  
 1. MAX FART CIA 10 KNOP  
 2. GOD ANLIGNING AV TAPPEVETSADE  
 SIDAN MOT RODERARMARNA  
 3. ROORET MONJAS INV. FÖRE HÖPSTÄLLNING.  
 4. RODERSTÄLLNING 7/8" FÖRSTÄLLNING 1 1/8"  
 ARRANGEMENTS TO PREVENT RUDDER FROM  
 LIFTING, TO SURVEYORS SATISFACTION (NOTICE 186)


CORRECTED AS PER D.R. FROM LLOYDS  
 DEN 23/9 1946 - #359 ; 29/10 1947 - #361  
 DEN 12/8 1948 - #362

780 TONS D.W. MOTORFARTYD  
 AKTERSTAV 3 RODER  
 GÖTHEBURG FIRST ENTRY REPORT NO. 16561  
 KALMAR VARV  
 DEN 23/4 1948  
 NYB # 359 361 362  
 BEET # 8400 8600 8700

5.P

363



"FENJA"  *HOTONUI*

*Stemframe & rudder*

RECORDS DEPT.,  
LONDON

5



© 2020

Lloyd's Register  
Foundation

010631-010639-0223