

J-1406 - YARD N^o. 578 705 741-2-3.

LOWER DECK.

SCALE 1/4 INCH = 1 FOOT.

DRAWING N^o 28.

APPROVED BY ADMIRALTY 15th AUGUST 1951.

9' x 36" BA STRINGER
INTERCOSTAL BETWEEN
WEB FRAMES & BHDS

6' x 3' x 36" BA FRAME
6' x 6' x 36" LUGS
ON EVERY FRAME
4-3/4 RVS TO FRAME
STRINGER 9' x 36" BA

DETAIL OF STRINGER
CONNECTION TO FRAMES

6' x 6' x 36" LUGS
5-3/4 RVS TO STRINGER
STRINGER 9' x 36" BA

DETAIL OF STRINGER
CONNECTION TO WEB FRAME

STRINGER CONNECTION AT
FRAME 66, PORT & STARB^o

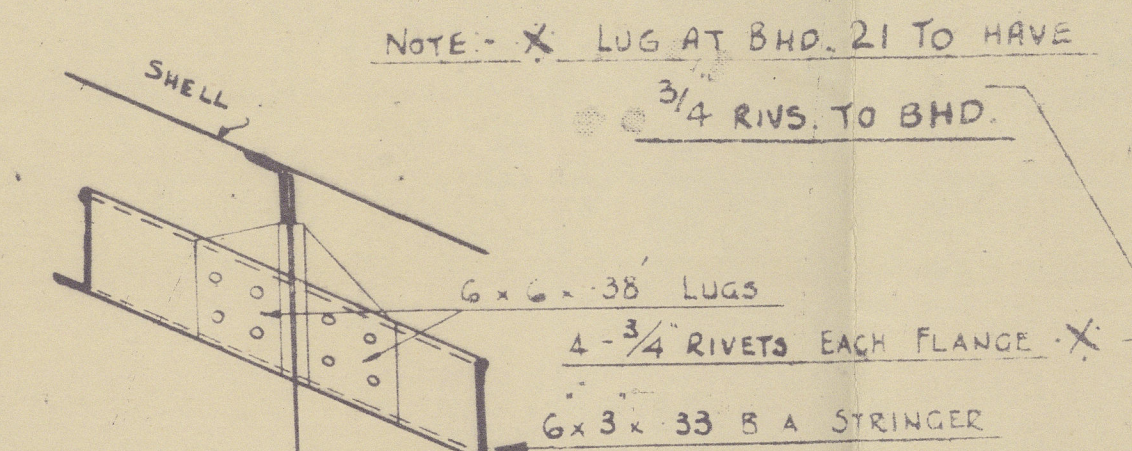
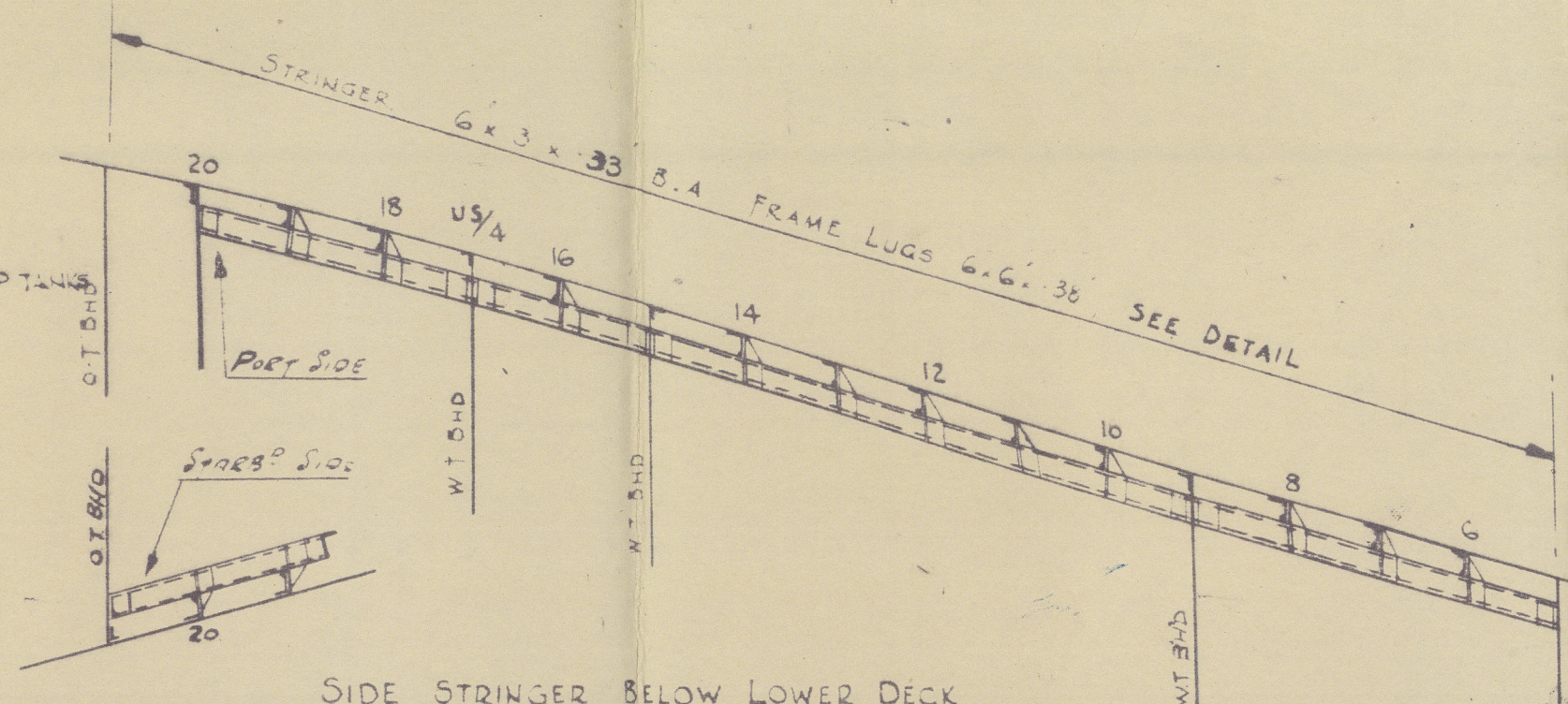
BHD. 51 CONNECTION

RIVETING		
END LAPS OF STRINGER PLATE	ALL - 5 DR	3/4 DIA RIVETS SPACED 2 3/8 CENTRES
END LAPS OF PLATING	5 DR x 3 SR	3/4
* SEAMS ALL 2 1/2 SR 6-3/4 RIVETS PER FRAME SPACE EACH BEAM RIVET 7-1/4 RVS IN WAY OF DECK TANKS		
DILIGHT BHD BOUNDARY ANGLES TO DECK	3/4	3 3/4
WATERTIGHT BHD	3/4	3 3/4
SEAMS TO DECK IN OIL TANKS	3/4	4 1/2
SEAMS TO DECK IN F.W. TANKS	3/4	4 1/2
SEAMS TO DECK ELSEWHERE	3/4	5 1/4
NON-WT BOUNDARY ANGLES	3/4	4 1/2

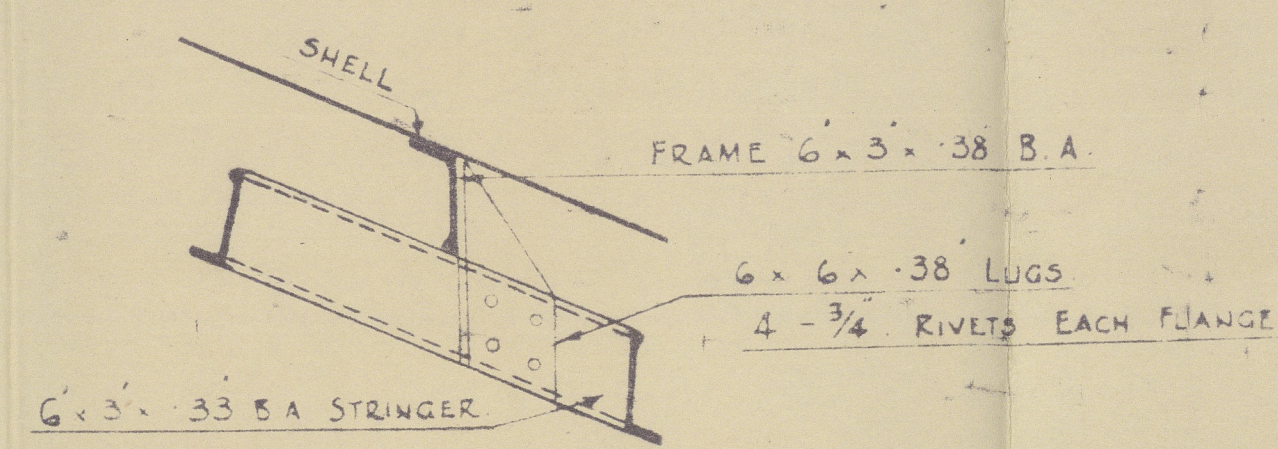
ALL SEAMS SINGLE RIVETED 2 1/2
ALL DOUBLE RIVETED END LAPS 5
ALL SINGLE RIVETED END LAPS 3

AIR ESCAPE HOLES PUNCHED IN BEAMS IN OIL FUEL TANKS, F.W. TANKS,
& DIESEL OIL TANK
FOR BRACKETS AT CUT FRAMES SEE FRAME ARRANGEMENT
ALL DILIGHT & WATERTIGHT MANHOLES 21 x 15

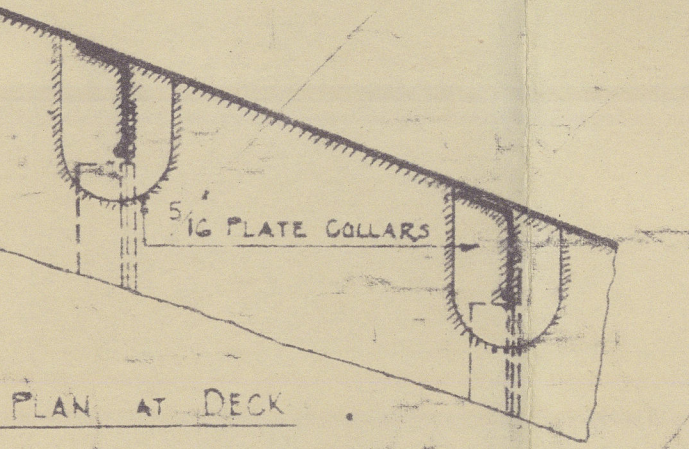
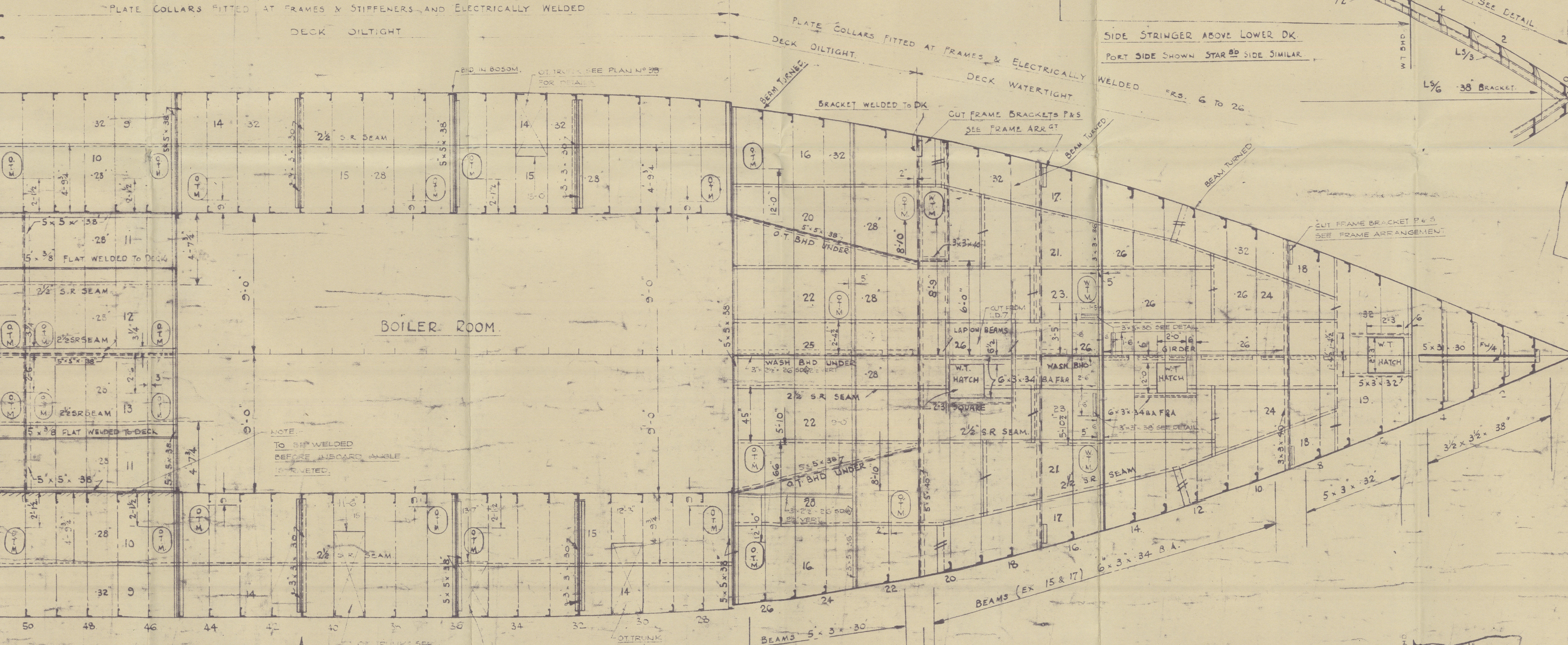
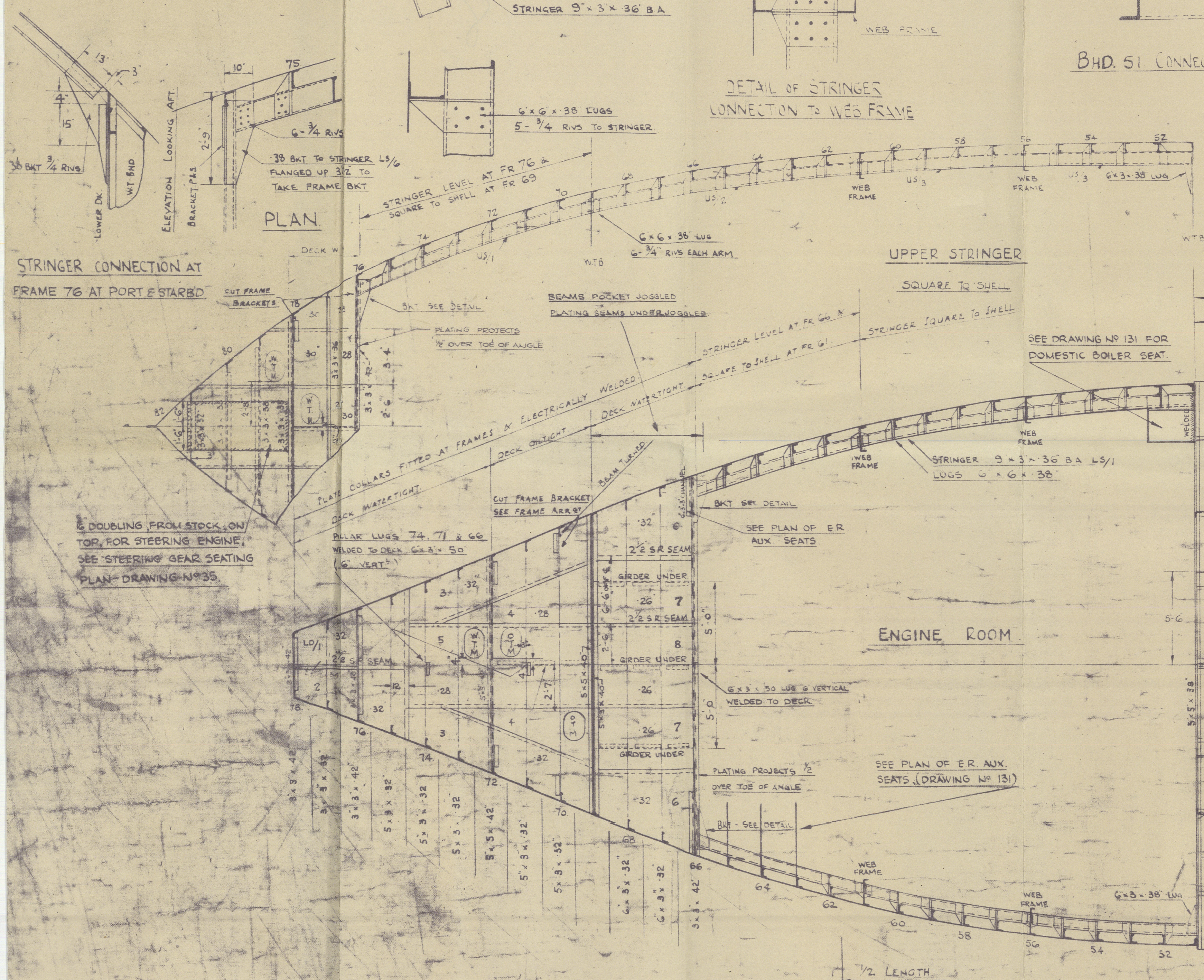
* WHEREVER OF SEAM DOES NOT EXCEED 24"



BULKHEAD CONNECTION
SCALE 1" = 1'-0"

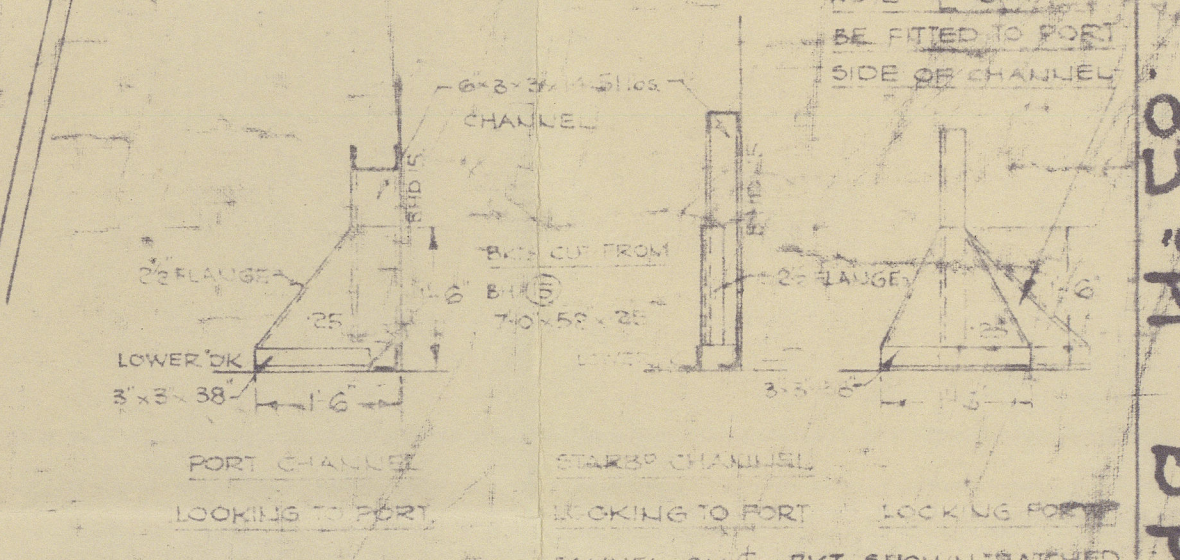
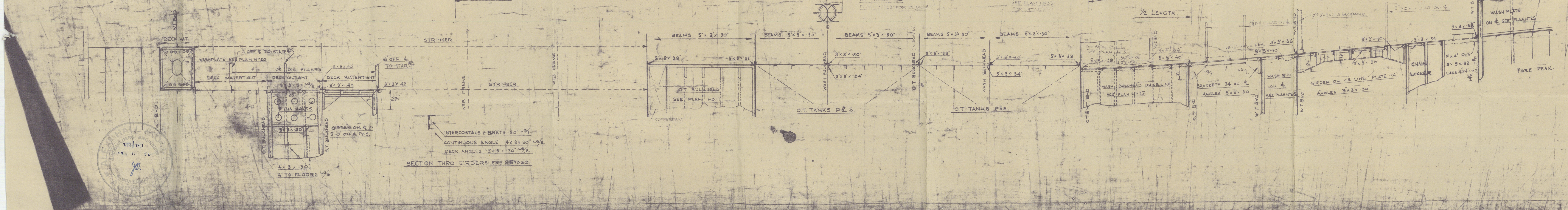


FRAME CONNECTION
SCALE 1" = 1'-0"

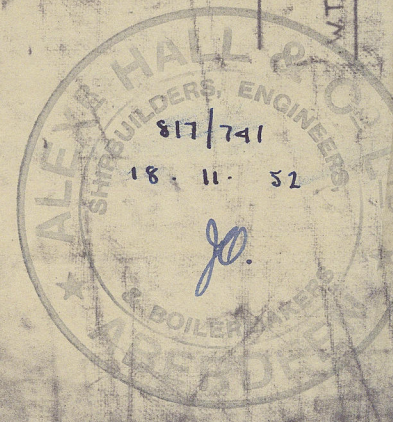


DETAIL OF ELECTRIC WELDING
(STRINGER PL TO SHELL)

SECTION AT FRAME



DETAIL OF CHANNEL CONNECTIONS TO DECK
AT BHD 15



2/5 626

H.M.T.S. Tug "SAMSON"

Messrs A.Hall and Co.

Yard No. 741 Eng. No 453/4

ABERDEEN Report No. 23645

March 1954

Lower Deck (as fitted)

RECORDS DEPT.
LONDON.



© 2021

Lloyd's Register
Foundation

010697-010704-0090