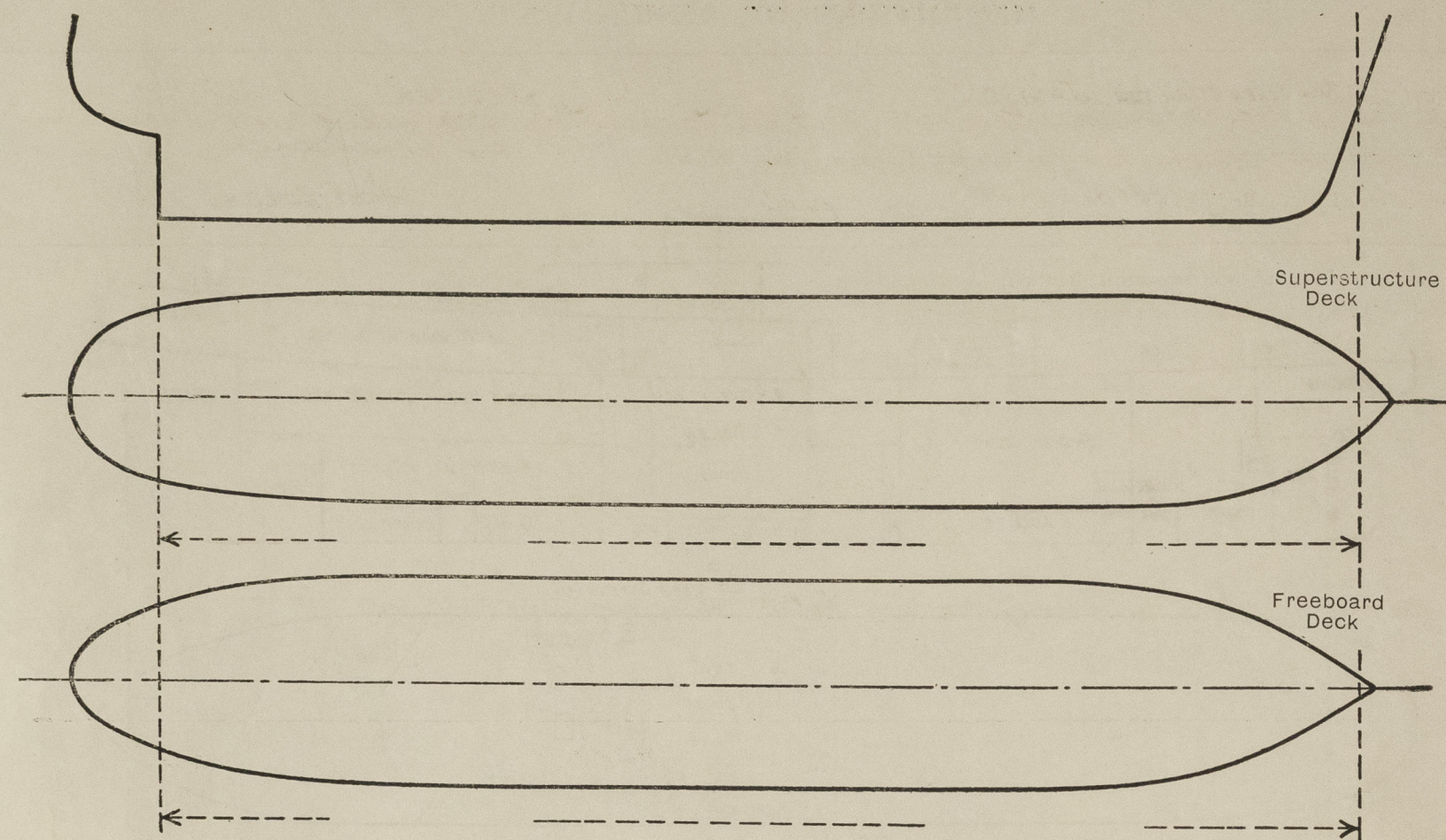






## PARTICULARS OF PROTECTION TO OPENINGS, ETC.

The following diagrams should be used to indicate the positions of cargo and coaling hatchways, gangway, cargo and coaling ports, ventilators, companionways, etc., which would affect the seaworthiness of the ship:—



Particulars of fiddle, funnel and ventilator coamings, engine room skylight and other openings in machinery casing tops and their means of closing:—  
ENGINE ROOM SKYLIGHT 20'-0" x 16'-0" PLATING 30 STIFFENERS 8" x 24" x 25' SPACED 24", TOP PLATING 26 STIFFENERS 4" x 24" x 28', HEIGHT AT CENTRE 3'-0", SIDES 3'-9", 8 OPENING FLAPS ON SKYLIGHT TOP, STRONGLY CONSTRUCTED OF STEEL WITH 10" DIA FIXED LIGHTS.  
FUNNEL STRONGLY CONSTRUCTED OF STEEL. 3/4" THICK WITH STEEL COVERS.

Particulars of Flush Bunker Scuttles:— **SCREWED TYPE**

1-18" DIA FLUSH BUNKER SCUTTLE OF STEEL WITH PERMANENT CHAIN ATTACHMENT. (ON FOLE OK. (P) TO GALLEY COAL BUNKER. ✓

Particulars of Companionways:—

ENTRANCE TO ENGINE ROOM AT AFT END. E.K. SKYLIGHT (P.S.) 3'-4" x 2'-0" OPENING, COAMING 24", CLOSED BY MEANS OF HINGED STEEL W.T. DOORS CAPABLE OF BEING MANIPULATED FROM BOTH SIDES. ✓

Particulars of Ventilators in exposed positions on freeboard and superstructure decks:—

FORECASTLE DECK.

3-4" DIA GAS TIGHT MUSHROOM VENTILATORS, COAMING 24" x 17" } CLOSED BY  
4-6" " " " " " " 24" x 25" } HINGED STEEL  
5-4" " " " " " " 29" x 28" } W.T. COVERS ✓  
1-8" " " " " " " 30" x 30" } 3/16" THICK.  
6-9" " " " " " " 30" x 32" } PERMANENTLY ATTACHED.

1-2 1/2" G.N. VENT 2'-6" HIGH WITH PLUG COCK, WIRE GAUZE AND CANVAS COVER. ✓

1-3" DIA G.N. VENT 2'-6" HIGH, CLOSED BY WOOD PLUG & CANVAS COVER. ✓  
2-4" " MUSHROOM VENTS COAMING 24" x 17" } WITH CANVAS  
2-6" " " " " " 24" x 25" } COVERS. ✓

2-4" DIA MUSHROOM VENT COAMING 25" x 17" } CLOSED BY W.T. (SCREWED)  
2-6" " " " " " 30" x 25" } STEEL COVERS, READILY STOWED  
1-9" " " " " " 30" x 32" } IN ACCESSIBLE POSITION AND  
CANVAS COVERS.

Particulars of Air Pipes in exposed positions on freeboard, raised quarter, or superstructure decks:—

UPPER DECK AIRPIPES 26" HIGH. } WITH WOOD PLUGS OR WIRE  
FOLE DECK " 18" HIGH. } CANVAS COVERS.  
GAUZE AND CANVAS COVERS.

UPPER DECK.

2-6" DIA GAS TIGHT MUSHROOM VENTS COAMING 24" x 25".  
1-8" " " " " " " 24" x 30".  
CLOSED BY HINGED STEEL W.T. COVERS 3/16" THICK, PERMANENTLY ATTACHED. ✓

2-3" GOOSENECK VENTS 2'-6" HIGH (CLOSED BY WOOD PLUGS & C.C.) ✓  
2-9" DIA MUSHROOM VENT COAMING 30" x 32" } CLOSED BY  
2-21" x 11" " " " 30" x 40" } CANVAS  
2-18" x 10" " " " 30" x 38" } COVERS. ✓

1-12" DIA COWL VENT COAMING 36" x 34" WITH WOOD PLUG & CANVAS COVER. ✓  
3-4" x 14" GOOSENECK VENTS 3'-0" HIGH (CLOSED WITH  
W.T. STEEL COVER PLATE PERMANENTLY ATTACHED. ✓  
& CANVAS COVER.

Particulars of Gangway Cargo and Coaling Ports:—

GANGWAY DOOR IN BULKHEADS (P.S.) ON UPPER DECK 2'-6" x 2'-3" - 9" ABOVE DECK ✓

Particulars of Scuppers and Sanitary Discharge Pipes:—

ALL SCUPPERS & DISCHARGES FROM SPACES ON OR ABOVE UPPER DECK LED TO GUNMETAL STORM VALVES DISCHARGING ABOVE LOWER DECK. — NO DISCHARGES FROM SPACES BELOW UPPER DECK ✓

Particulars of Side Scuttles:—

SIDE SCUTTLES OF STRONG CONSTRUCTION & FITTED WITH STRONGLY CONSTRUCTED HINGED DEADLIGHTS. ✓

Vertical distance of Sill of lowest Side Scuttle above top of keel

15'-11"

AT 50' ABEFT FORE. PERP.

Particulars of Guard Rails:—

STEEL BULKHEADS ON UPPER DECK (AFT OF FOLE END) STRONGLY CONSTRUCTED AND EFFICIENTLY SUPPORTED.  
GUARD RAILS ON FOLE DECK 3'-3" HIGH WITH 1 TOP WIRE @ 2" F.S.W.R. & 2 LOWER WIRES @ 1 1/4" F.S.W.R. — FITTED WITH 1 1/2" DIA HINGED STANCHIONS SPACED 4'-3" APART. WITH STRETCHING SCREWS FITTED TO ALL WIRES.

Particulars of Gangways, Lifelines, etc.:—

HAND RAILS ON CASING SIDES.

Particulars of Freeing Arrangements.

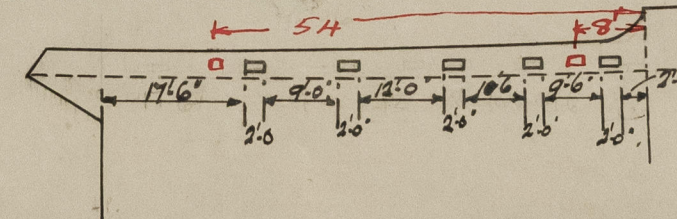
	Length of Bulwark	Height of Bulwark	Size of Freeing Ports	Number each side	Area each side	Rule area each side
After Well ...	70'-6"	3'-0"	24" x 12" 25" x 12"	5 2	10 1/2 4-16	14-1 1/2
Forward Well ...					14-16.	

State position of each freeing port ... { After Well:—

(F. and A. position and height above deck edge) { Forward Well:—

State whether the freeing ports are fitted with shutters, bars, or rails, and give particulars of such:— SHUTTERS FITTED. ✓

Additional area where sheer is less than standard.





### PARTICULARS OF PROTECTION TO OPENINGS, ETC.

HATCHWAYS ON FREEBOARD AND SUPERSTRUCTURE DECKS.											
			FORECASTLE DECK.		UPPER DECK ENCLOSED		UPPER DECK EXPOSED.				
Description of Hatchway ... ..			TO UPPER DECK. ACCOMMODATION.		TO LOWER DECK ACCOMMODATION.		TO CENTRAL STOLE	<del>TO ENGINE ROOM</del>	TO AFT HOLD	TO STEERING GEAR.	
Dimensions of Hatchway ... ..			4'-0" x 2'-6"	24" DIA	24" DIA	3'-6" x 2'-6"	2'-0" x 2'-0"	<del>2'-0" x 2'-0"</del>	3'-6" x 3'-0"	24" DIA.	
COAMINGS	{	Height above Deck ... ..	21"	24"	10"	9"	24"	24"	24"	16"	
		Thickness {	Sides ... ..	.25	.20	.20	.38	.38	.38	.38	.26
			Ends ... ..	.25	.20	.20	.38	.38	.38	.38	.26
		Stiffeners ... ..	✓	✓	✓	✓	✓	✓	✓	✓	
		Brackets, Stays ... ..	✓	✓	✓	✓	✓	✓	✓	✓	
HATCH BEAMS	{	Number ... ..									
		Spacing ... ..									
FORE AND AFTERS	{	Scantling and Sketch ... ..	ADMIRALTY PATTERN TYPE "A" ESCAPE SCUTTLE CAPABLE OF BEING OPERATED FROM BOTH SIDES.		ADMIRALTY PATTERN TYPE "A" ESCAPE SCUTTLE CAPABLE OF BEING OPERATED FROM BOTH SIDES.		FITTED WITH ADMIRALTY PATTERN ESCAPE HATCH 1'-6" x 1'-6" x 20 THICK. 3" HIGH COAMING WITH HINGED STEEL IN IT. COVER CAPABLE OF BEING MANIPULATED FROM BOTH SIDE. ON TOP OF HATCH.		ADMIRALTY PATTERN TYPE "A" ESCAPE HATCH CAPABLE OF BEING MANIPULATED FROM BOTH SIDES.		
		Bearing Surface ... ..									
		Number ... ..									
		Spacing ... ..									
		Unsupported Lengths ... ..									
HATCH COVERS	{	Scantling* and Sketch ... ..									
		Bearing Surface ... ..									
		Material ... ..	STEEL	STEEL	STEEL	STEEL	STEEL	<del>STEEL</del>	STEEL	STEEL	
		Thickness ... ..	.25	.20	.20	.25	.25	<del>.21</del>	.25	.20	
		How fitted ... ..	HINGED W.T.	HINGED W.T.	HINGED W.T.	HINGED W.T.	HINGED W.T.	<del>HINGED W.T.</del>	HINGED W.T.	HINGED W.T.	
Spacing of Cleats	{	Bearing Surface ... ..	.25	.20	.20	.38	.38	.38	.38	.20	
		Number of Tarpaulins ... ..	16"	✓	✓	15"	15"	<del>15"</del>	20"	✓	

\*Are wood fore and afters steel shod at all bearing surfaces? ✓

Are battens and wedges efficient and in good condition? ✓

Are tarpaulins in good condition and in accordance with rule requirements? ✓

Are lashings provided in accordance with rule requirements? ✓

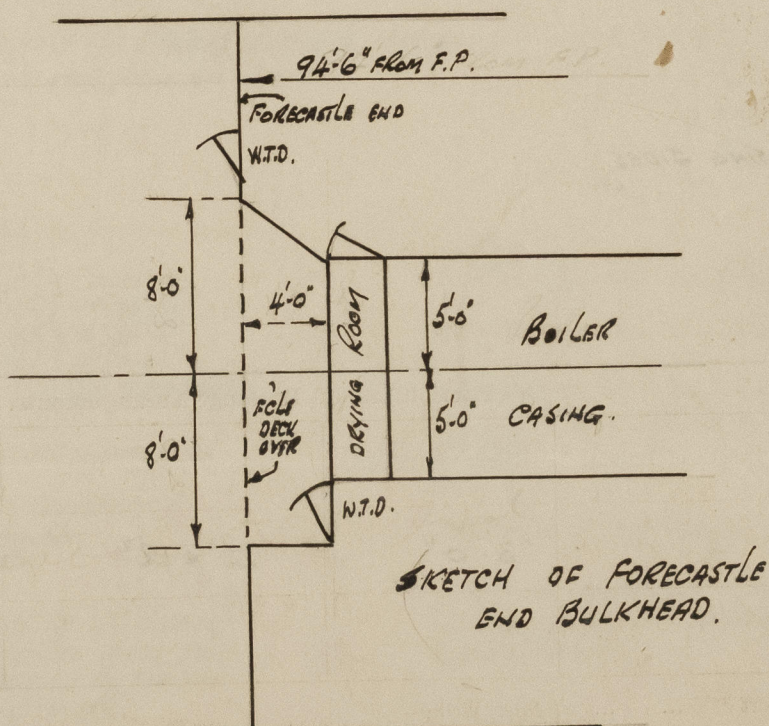
Particulars of any special features :—

SKYLIGHTS ON FORECASTLE DECK.

SKYLIGHTS ON FORECASTLE DECK.  
2 @ 3'-0" x 2'-0" - 30" HIGH x 20" THICK FITTED WITH STRONGLY CONSTRUCTED HINGED STEEL W.T. COVERS 2 FIXED GLASS PANELS ON EACH COVER.  
2 @ 3'-0" x 2'-0" - 25" " x 20" " " " " " " " " 2 " " " " " "

26" diam. ADMIRALTY TYPE  
ESCAPE HATCH.

COATING 16" x 20" ON  
TOP OF ENGINE ROOM  
SKYLIGHT.



THE PARTICULARS GIVEN HEREWITH ARE AS PROPOSED & COMPLETION OF SAME WILL BE CONFIRMED WITH VERIFICATION OF MARKING FORM.