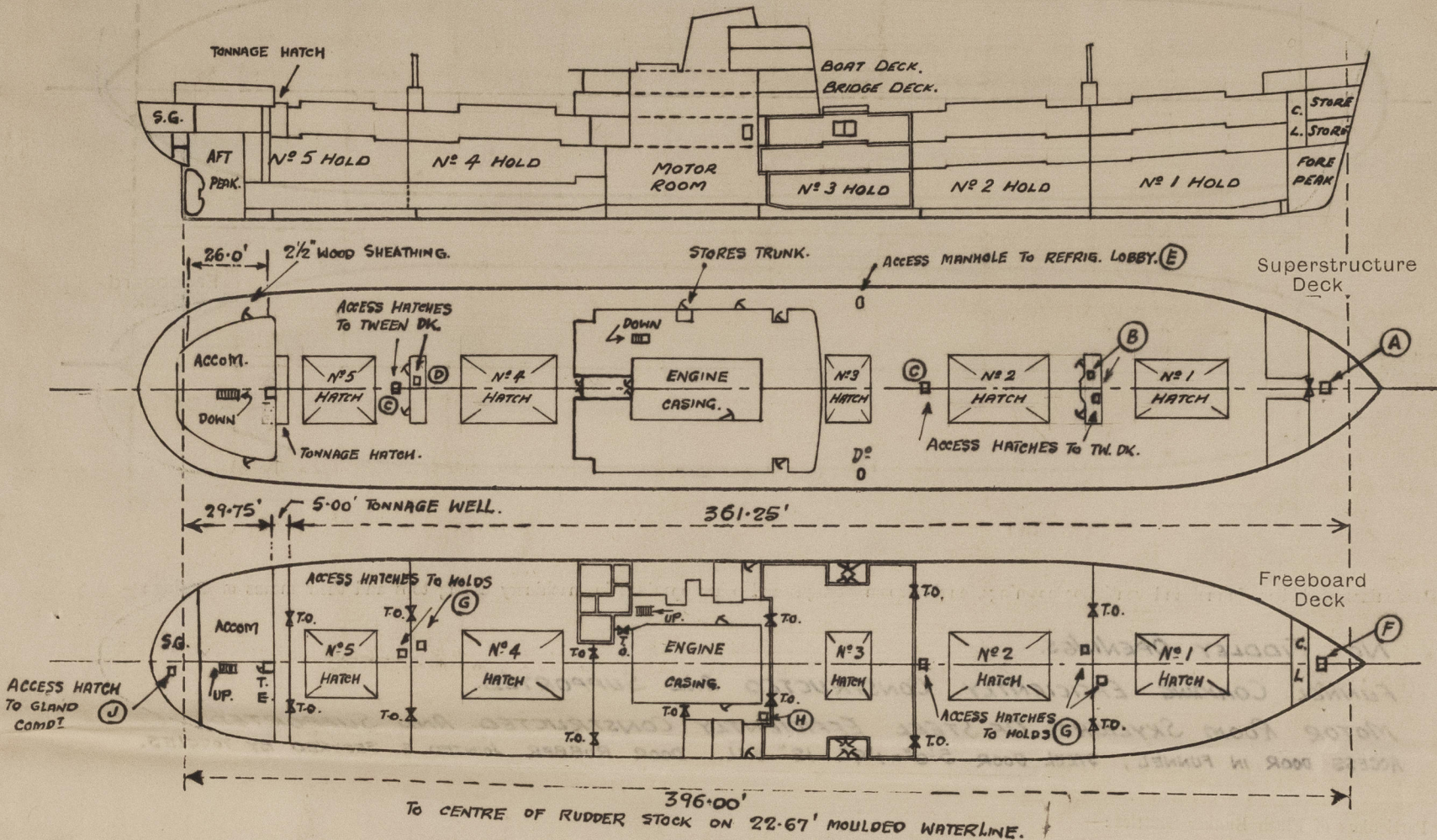


Lloyd's Register of Shipping.
SURVEYS FOR FREEBOARD.
(CONDITIONS OF ASSIGNMENT.)

Ship's Name "CIUDAD DE BARQUISIMETO" Port of Survey GLASGOW.
Official Number Surveyor's Signature W. Macmillan
Nationality and Port of Registry VENEZUELA. LA GUAIRA. Date of Survey WHILST BUILDING.

Disposition and dimensions of superstructures, trunks, deckhouses and machinery casings to be inserted in the diagrams and tabular statement:—



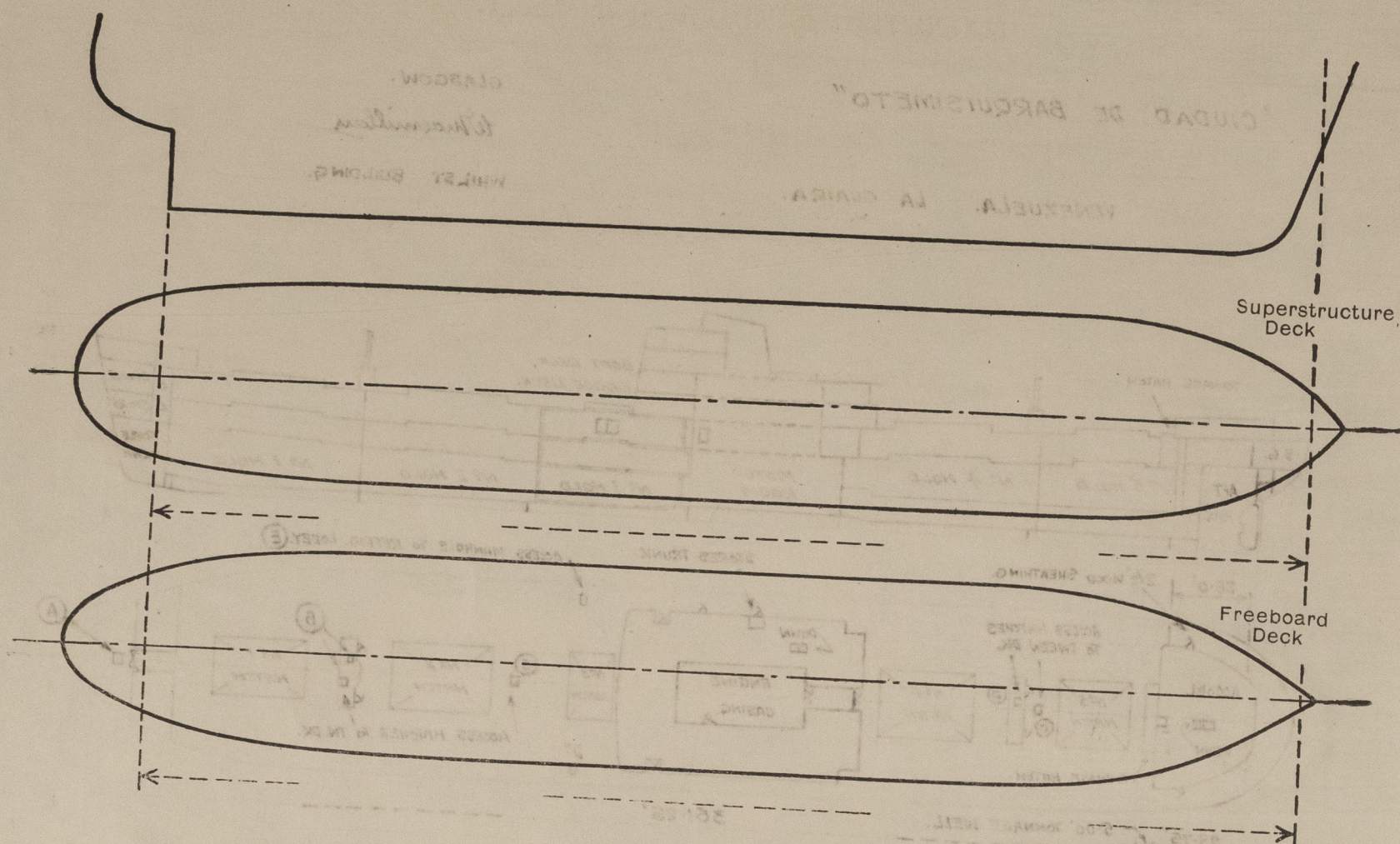
Particulars of Superstructures, Trunks, Casings, Deckhouses.								
	Coaming	Plating	Stiffeners	Spacing	End Attachments of Stiffeners	Size of Openings	Height of Sills	Height of Casings
Poop Bulkhead ... CENTRE SIDES28 .25	.28 .25	3" x 2½" x 30	30"-32"	FREE	NONE	—	10'-1¾" 9'-0"
Raised Quarter Deck Bulkhead ...								
Bridge, After Bulkhead ... CENTRE SIDES28 .25	.28 .25	3" x 2½" x 30	30"-32"	FREE	2 @ 5'-0" x 3'-0"	11"	10'-1¾" 9'-0"
Bridge, Forward Bulkhead ...								
Forecastle Bulkhead ON SUPERSTRUCTURE DECK	.28	.28	3" x 2½" x 26	27"-30"	TOP & BOTTOM JOINTER	1 @ 5'-1" x 4'-0"	12"	7'-6"
Trunk, Aft ...								
Trunk, Forward ...								
Exposed Machinery Casings on Freeboard or Raised Quarter Deck26	.26	3" x 2½" x 26 3" x 3" x 50	24"-30"	BOT. JOINTER	2 @ 5'-3" x 2'-2"	18"	10'-0"
Exposed Machinery Casings on Superstructure Deck26-.30	.26	3" x 2½" x 26 3" x 3" x 50	24"-30"	TOP JOINTER	1 @ 5'-6" x 3'-8" 1 @ 5'-0" x 2'-0"	12"	8'-0"
Machinery Casings within Superstructures not fitted with Class I Closing Appliances MIDSHIP DECKHOUSE	FRONT .33 SIDES .28 END .26	.33 .28 .26	6" x 3" x 40 4" x 3" x 30 3½" x 3" x 26	32"-36" 30" 30"	WELDED T. & B. TOP RIV. TO BEAM BOT. BRACKETED	1 @ 5'-3" x 2'-0" 2 @ 4'-8½" x 2'-3" 1 @ 5'-0" x 3'-11"	18"	8'-0"
AFT Deckhouse ON SUPERSTRUCTURE DECK	FRONT .25 SIDES .25 END .25	.25 .25 .25	3" x 2½" x 5½"	28"-30" 27"	BOT. JOINTER BOT. BRACKETED BOT. JOINTER	2 @ 4'-6" x 2'-0"	18"	7'-6"

Particulars of Closing Appliances (state if capable of being manipulated from both sides).	
Poop Bulkhead ...	NO OPENINGS.
Raised Quarter Deck Bulkhead ...	
Bridge, After Bulkhead ...	PORTABLE STEEL PLATES SECURED BY HOOK BOLTS NOT PASSING THROUGH BULKHEAD.
Bridge, Forward Bulkhead ...	
Forecastle Bulkhead ...	3" SHIFTING BOARDS IN D.A. TO BE WELDED TO BULKHEAD.
Exposed Machinery Casings on Freeboard or Raised Quarter Deck ...	HINGED STEEL DOORS. OPERATED BOTH SIDES.
Exposed Machinery Casings on Superstructure Deck ...	HINGED STEEL DOORS. OPERATED BOTH SIDES.
Machinery Casings within Superstructures not fitted with Class I Closing Appliances MIDSHIP DECKHOUSE	2" SOLID HARDWOOD DOORS, AND 1-HINGED STEEL DOOR. OPERATED BOTH SIDES.
AFT Deckhouse ON SUPERSTRUCTURE DECK	2" SOLID HARDWOOD DOORS. OPERATED BOTH SIDES.

"CIUDAD DE BARQUISIMETO"

PARTICULARS OF PROTECTION TO OPENINGS, ETC.

The following diagrams should be used to indicate the positions of cargo and coaling hatchways, gangway, cargo and coaling ports, ventilators, companionways, etc., which would affect the seaworthiness of the ship :-



Particulars of filley, funnel and ventilator casings, engine room skylight and other openings in machinery casing tops and their means of closing :-

NO FIDDLEY OPENINGS.

FUNNEL COAMING EFFICIENTLY CONSTRUCTED AND SUPPORTED.

MOTOR ROOM SKYLIGHT OF STEEL EFFICIENTLY CONSTRUCTED AND SUPPORTED.

ACCESS DOOR IN FUNNEL; STEEL DOOR 5'0" x 1'9". 12" SILL. DOOR RUBBER JOINTED & SECURED BY TONGUES.

Particulars of Flush Bunker Scuttles :-

NONE

Particulars of Companionways :-

ACCESS LADDERWAYS TO SPACES BELOW SUPERSTRUCTURE DECK ARE SITUATED WITHIN MIDSHIP & AFT DECKHOUSES (SEE PREVIOUS PAGE FOR SCANTLINGS OF HOUSES & PARTICULARS OF CLOSING APPLIANCES)

STORES TRUNK IN MIDSHIP DECKHOUSE FITTED WITH HINGED STEEL DOOR, 18" SILL. DOOR OPERATED BOTH SIDES.

TUNNEL ESCAPE TRUNK WITHIN POOP SPACE FITTED WITH HINGED STEEL DOOR, 14" SILL. DOOR OPERATED BOTH SIDES.

Particulars of Ventilators in exposed positions on freeboard and superstructure decks :-

SUPERSTRUCTURE DECK

14 - 19" DIA COWL VENTS. 40 COAMING 36" HIGH, FITTED WITH AXIAL FLOW FAN IN 25 CASING 23" HIGH MOUNTED ON COAMING & SPECIALLY SUPPORTED. (AS APPROVED).

2 - 10" x 6" COWL VENTS FIXED HEADS 25 COAMING 30" HIGH.

8 - 6" DIAM. GOOSENECK VENTS 25 COAMING 30" HIGH.

FORECASTLE DECK

3 - 9" DIAM. COWL VENTS 32 COAMING 36" HIGH

3 - 6" DIAM. GOOSENECK VENTS 25 COAMING 30" HIGH.

BRIDGE DECK

2 - 19" DIAM. COWL VENTS. 40 COAMING 36" HIGH, FITTED WITH AXIAL FLOW FAN IN 25 CASING 23" HIGH MOUNTED ON COAMING & SPECIALLY SUPPORTED (AS APPROVED)

DOCKING BRIDGE

1 - 21" DIAM. COWL VENT 40 COAMING 24" HIGH.

1 - 12" " " 34 " 30" ".

1 - 12" DIAM. COWL VENT 34 COAMING 30" HIGH.

2 - 10" DIAM. S.D.M.V. 25 " 16" HIGH

ALL VENTS CLOSED BY WOOD PLUGS AND OR CANVAS COVERS.

Particulars of Air Pipes in exposed positions on freeboard, raised quarter, or superstructure decks :-

SUPERSTRUCTURE DECK

8 - 2" DIAM. 3 - 2 1/2" DIAM. 14 - 3" DIAM.

10 - 3 1/2" DIAM. 1 - 4" DIAM. 6 - 5" DIAM.

FORECASTLE DECK

2 - 3" DIAM.

ALL GOOSENECKS 18" HIGH. CLOSED BY WOOD PLUGS EXCEPT OIL FUEL AIR PIPES WHICH ARE FITTED WITH WIRE GAUZE AND CLOSED BY CANVAS COVERS.

"CIUDAD DE BARQUISIMETO"

Particulars of Gangway Cargo and Coaling Ports :-

CARGO GANGWAY DOORS :- BETWEEN FREEBOARD AND SUPERSTRUCTURE DECKS, 2 @ 6'5" x 7'0" WIDE HINGED STEEL WATERTIGHT DOORS IN HALVES, RUBBER JOINTED; OF SUBSTANTIAL CONSTRUCTION AND EFFICIENTLY SECURED BY VERTICAL STRONGBACKS.

FUELLING SHELL DOORS :- BETWEEN FREEBOARD AND SUPERSTRUCTURE DECKS, 2 @ 3'7" x 2'10" WIDE HINGED STEEL WATERTIGHT DOORS, RUBBER JOINTED; OF SUBSTANTIAL CONSTRUCTION AND EFFICIENTLY SECURED BY VERTICAL STRONGBACKS.

Particulars of Scuppers and Sanitary Discharge Pipes :-

SCUPPERS

SCUPPERS FROM FORECASTLE DECK DRAIN TO EXPOSED SUPERSTRUCTURE DECK.

SCUPPERS FROM EXPOSED SUPERSTRUCTURE DECK DRAIN OVERBOARD THROUGH OPEN BENDS, FITTED ABOVE L.W.L.

5 - 2 1/2" SCUPPERS FROM FREEBOARD DECK DRAIN TO HOLD BILGES, FITTED AT DECK WITH SCREW-DOWN VALVES GEARED TO SUPERSTRUCTURE DECK; INDICATOR PLATES FITTED.

2 - 2 1/2" SCUPPERS FROM FREEBOARD DECK DRAIN TO HOLD BILGES, FITTED BELOW DECK WITH SCREW-DOWN NON-RETURN VALVES GEARED TO SUPERSTRUCTURE DECK; INDICATOR PLATES FITTED.

2 - 5" SCUPPERS FROM TENNAGE WELL DRAIN OVERBOARD THROUGH SCREW-DOWN STORM VALVES GEARED TO SUPERSTRUCTURE DECK; INDICATOR PLATES FITTED. SCUPPERS FROM ENCLOSED SPACES ON FREEBOARD DECK DRAIN TO MOTOR ROOM BILGES AND FITTED WITH SELF-CLOSING COCKS AT LOWER ENDS.

DISCHARGES

SANITARY DISCHARGES FROM SPACES ON FREEBOARD DECK, SUPERSTRUCTURE DECK AND ABOVE DRAIN OVERBOARD THROUGH STORM VALVES.

NO OVERBOARD SCUPPERS OR DISCHARGES FROM SPACES BELOW FREEBOARD DECK.

ALL STORM VALVES OF BACK-BALANCED TYPE IN GUNMETAL CASINGS.

Particulars of Side Scuttles :-

BETWEEN FREEBOARD AND SUPERSTRUCTURE DECKS :- 12" OPENING TYPE IN BRASS FRAMES, FITTED WITH BRASS HINGED DEADLIGHTS, TO STEERING COMPARTMENT & CREW'S ACCOMMODATION AFT.

NO SIDE SCUTTLES FROM SPACES BELOW FREEBOARD DECK.

Vertical distance of Sill of lowest Side Scuttle above top of keel.

Particulars of Guard Rails :-

SOLID BULWARKS ALL AFT & AFT ON SUPERSTRUCTURE DECK, EFFICIENTLY CONSTRUCTED AND SUPPORTED.

GUARD RAILS ON FORECASTLE DECK 3'6" HIGH. 2 RODS. STANCHIONS 4'3" - 5'6" APART.

" " " BRIDGE " " 3 " 5'3" - 5'6" "

" " " DOCKING BRIDGE " " 2 " 4'5" - 5'6" "

Particulars of Gangways, Lifelines, etc. :-

LIFELINE FITTED BETWEEN MIDSHIP DECKHOUSE AND AFT DECKHOUSE.

Particulars of Freeing Arrangements.

	Length of Bulwark	Height of Bulwark	Size of Freeing Ports	Number each side	Area each side	Rule area each side
After Well ...	366.5'	3'6 1/2"	7'0" x 9"	4	52.5 sq	27.7 sq
ON SUPERSTRUCTURE DECK FROM AFT END OF FORECASTLE			14'0" x 9"	3		
Forward Well ...						

State position of each freeing port ... (F. and A. position and height above deck edge)

State whether the freeing ports are fitted with shutters, bars, or rails, and give particulars of such :-

Additional area where sheer is less than standard.

CLEAR OPENINGS.

CIUDAD DE BARQUISIMETO

PARTICULARS OF PROTECTION TO OPENINGS, ETC.

HATCHWAYS ON FREEBOARD AND SUPERSTRUCTURE DECKS.											
SUPERSTRUCTURE DECK						FREEBOARD DECK					
Description of Hatchway	N° 1	N° 2	N° 3	N° 4	N° 5	N° 1	N° 2	N° 3	N° 4	N° 5	
Dimensions of Hatchway	31'-6" x 16'-0"	36'-0" x 20'-0"	15'-0" x 20'-0"	32'-6" x 20'-0"	25'-0" x 20'-0"	31'-6" x 16'-0"	36'-0" x 20'-0"	15'-0" x 20'-0"	35'-0" x 20'-0"	25'-0" x 20'-0"	
COAMINGS	Height above Deck ... 30" AT CENTRE LINE & LEVEL ATHWARTSHIPS					9" x 3 1/2" x .40" B.A.					
	Thickness { Sides }44"										
	Stiffeners ... HORIZ. B.A. ... 8 x 3 1/2 x .46					8 x 3 1/2 x .46					
	Brackets, Stays ... SIDES ... 3 ONE					3 ONE					
HATCH BEAMS	Number ...					6					
	Spacing ...					4'-6"					
	Scantling and Sketch ...					5'-1 3/4"					
	Bearing Surface ...					3"					
FORE AND AFTERS	Number ...					2					
	Spacing ...					5'-0"					
	Unsupported Lengths ...					5'-0"					
	Scantling* and Sketch ...					5'-0"					
HATCH COVERS	Material ...					WOOD					
	Thickness ...					2 3/8"					
	How fitted ...					F & A					
	Bearing Surface ...					2 1/2"					
Spacing of Cleats ...						24"					
Number of Tarpaulins ...						ONE					

COVERS

*Are wood fore and afters steel shod at all bearing surfaces? YES.

Are battens and wedges efficient and in good condition? YES.

Are tarpaulins in good condition and in accordance with rule requirements? YES.

Are lashings provided in accordance with rule requirements? LOCKING BARS AT ALL SUPERSTRUCTURE DECK HATCHWAYS.

HATCHWAYS (CONTINUED)

ON SUPERSTRUCTURE DECK

Particulars of any special features: — TONNAGE HATCH:— 4'-6" x 20'-0". 9" B.A. COAMING. 2 1/2" WOOD COVERS SECURED BY LASHINGS. NO TARPULINS OR BATTENING ARRANGEMENTS.

- | | | | | | | | | |
|---------------------------|-------------------------|-------------|---------------------|--------------------------------------|---------|-----|-------|-----|
| (A) | 36" x 36" | 9" COAMING. | HINGED STEEL COVER. | RUBBER JOINTED & SECURED BY TOGGLES. | COAMING | 40" | COVER | 40" |
| (B) | 21" x 21" AND 24" x 21" | 9" COAMING. | HINGED STEEL COVER. | RUBBER JOINTED & SECURED BY TOGGLES. | " | 44" | " | 44" |
| (C) | 23" x 27" AND 27" x 27" | 18" | " | " | " | 44" | " | 44" |
| (D) | 24" x 21" | 9" | " | " | " | 44" | " | 44" |
| (E) | 21" x 17" MANHOLE. | 13" | " | " | " | 56" | " | 50" |
| <u>ON FREEBOARD DECK.</u> | | | | | | | | |
| (F) | 36" x 36" | 9" COAMING. | HINGED STEEL COVER. | RUBBER JOINTED & SECURED BY TOGGLES. | " | 40" | " | 40" |
| (G) | 21" x 21" TO 27" x 27" | 9" | " | " | " | 44" | " | 44" |
| (H) | 24" x 24" | 9" | " | " | " | 50" | " | 44" |
| (J) | 20" x 28" | 6" | " | " | " | 50" | " | 44" |

HATCHWAYS MARKED (B) AND (D) ABOVE ARE SITUATED WITHIN STEEL MASTHOUSES OF SUBSTANTIAL CONSTRUCTION, AND ARE PROTECTED BY HINGED STEEL DOORS 30" WIDE x 30" THICK, OPERATED BOTH SIDES: 24" SILLS ON FORWARD DOORS: 18" SILLS ON AFTER DOORS. ✓

Endorsement at first survey and at surveys for renewal of Certificate :—

The fittings and appliances are in accordance with the particulars shown on this form (or as now modified) and are in good condition.