

# Nº330. TAY FERRIES STEAMER. MIDSHIP SECTION. AS FITTED.

SCALE  $\frac{1}{2}$  = 1 FOOT.

DIMENSIONS - 161'-0" x 31'-0" x 8'-3" MLD  
164'-0" x 50'-0" OVER BELTING.

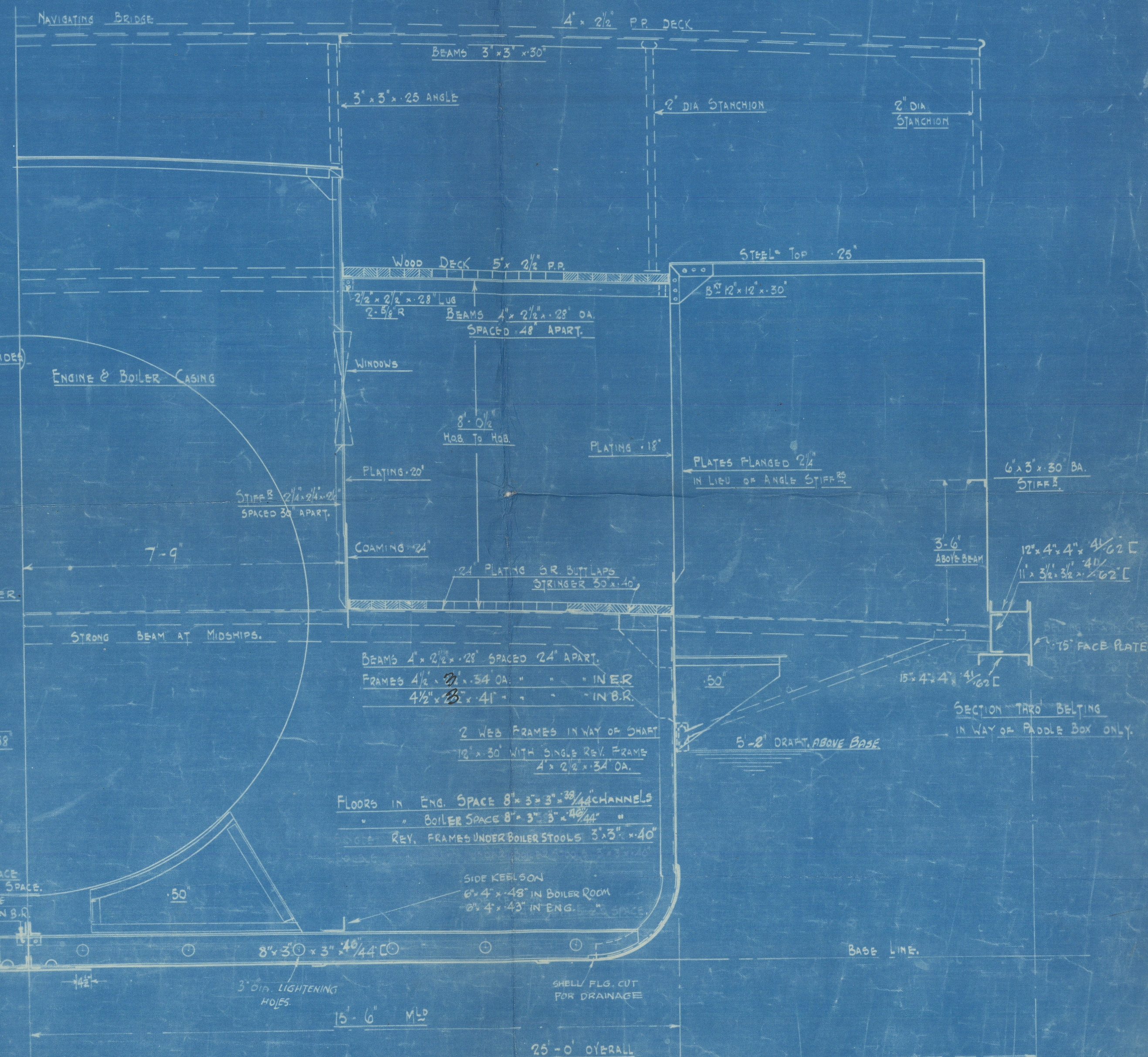
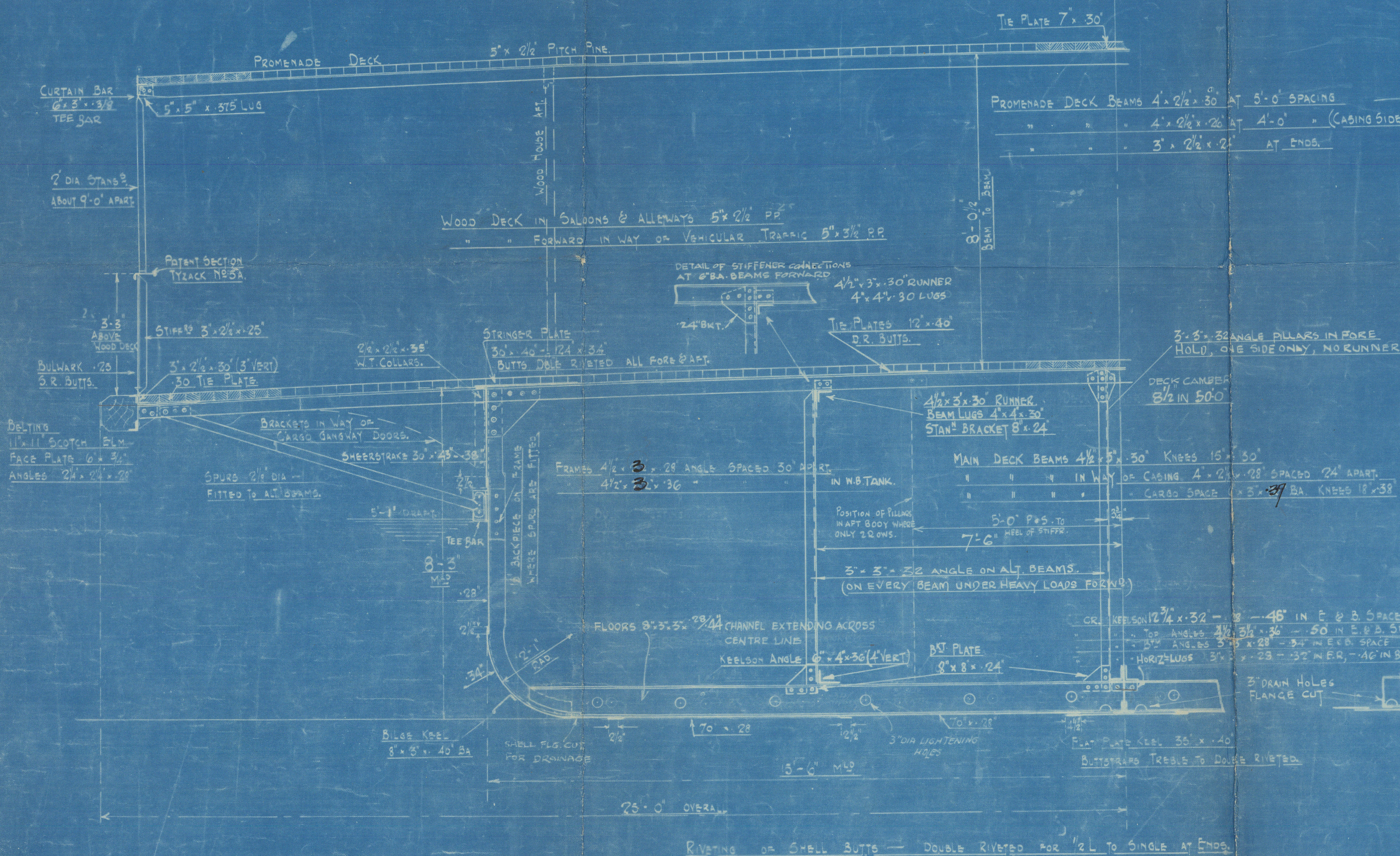
CLASS - LLOYD'S SPECIAL SURVEY FOR RIVER SERVICE ON THE TAY.  
WITH B.O.T. PASSENGER CERT<sup>s</sup> 4 & 5.

SCANTLINGS INCLUDE UNDERMENTIONED  
OWNER INCREASES.

SHEERSTAKE	=	.07
BILGE SHELL PLATES	=	.06
FRAMES IN ENGINE SPACE	=	.06
" " BOILER	=	.07
FLOORS IN ENG. SPACE	=	.06
" " BOILER	=	.08
KEELSONS & B BARS	=	.08
" VERT PLATE	=	.08
SIDE KEELSON BARS B.R.	=	.08
" " " ER	=	.07

NUMERALS	
DEPTH "D"	8.25
1 <sup>st</sup> LONG N <sup>o</sup>	13 5 2 37
2 <sup>nd</sup> " "	6 3 3 8 37
7 <sup>th</sup> " "	19.57
2 <sup>nd</sup> " "	7.52

EQUIPMENT	
ANCHOR	6 1/2 CWT. STOCKLESS
60 FATHOMS	1/8" STUD LINK CABLE
120 "	5/4" MANILLA
10 "	HEAVING LINE





MESS<sup>RS</sup> THE CALEDON S. F & G. LD.

N<sup>o</sup> 330

MIDSHIP SECTION AS FITTED.

Dundee Report N<sup>o</sup>. 8695.



© 2021

Lloyd's Register  
Foundation

010874-010881-0013