

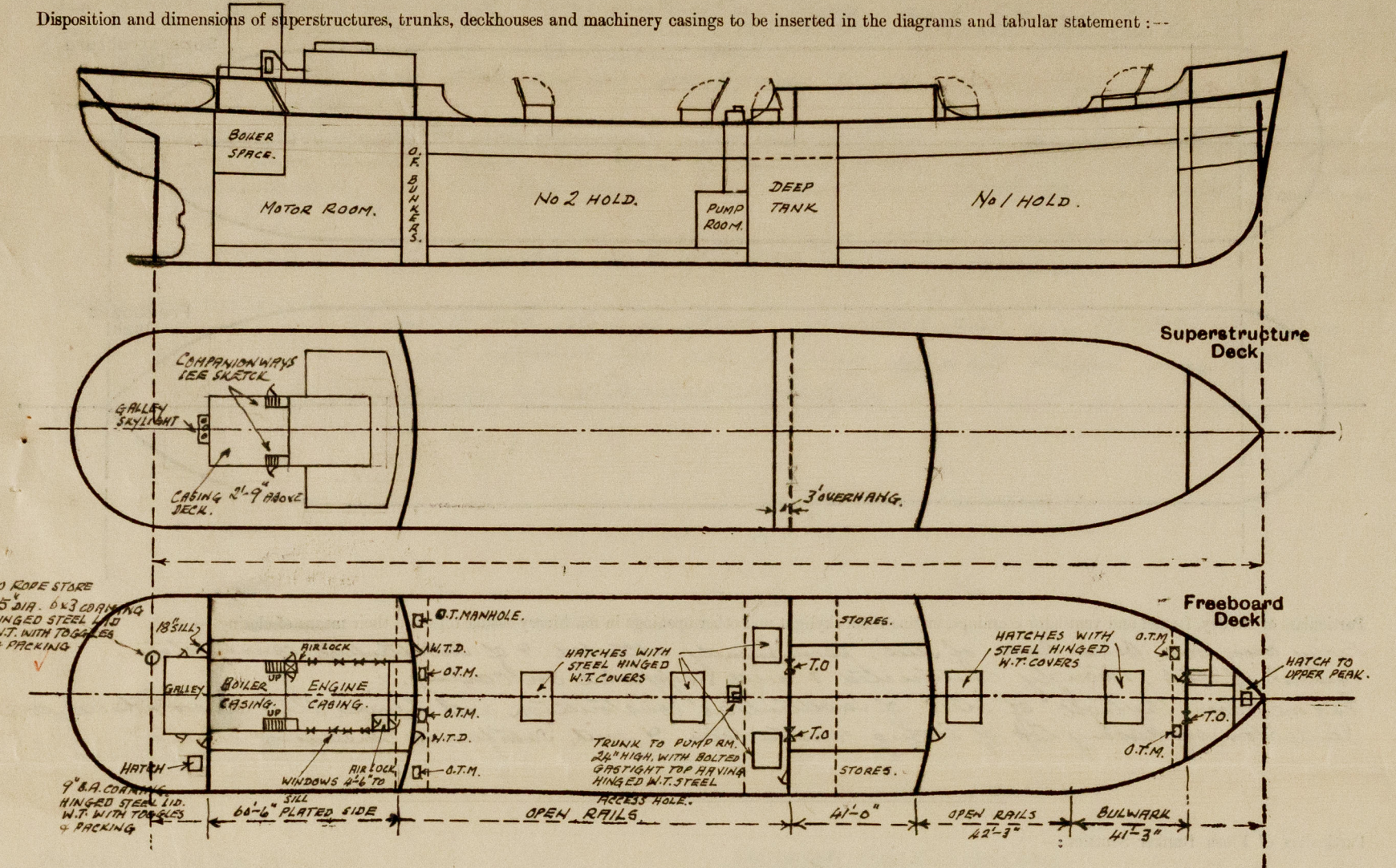
20 JAN 1947

Index No. 38029
(For London Office only.)

Lloyd's Register of Shipping.

SURVEYS FOR FREEBOARD. MOD. 18160.
(CONDITIONS OF ASSIGNMENT.)

Ship's Name *"CYRENA"* Port of Survey *Middlesbrough.*
Official Number _____ Surveyor's Signature *A. P. Scott.*
Nationality and Port of Registry *British. London.* Date of Survey *Whilst Building 1946-7.*

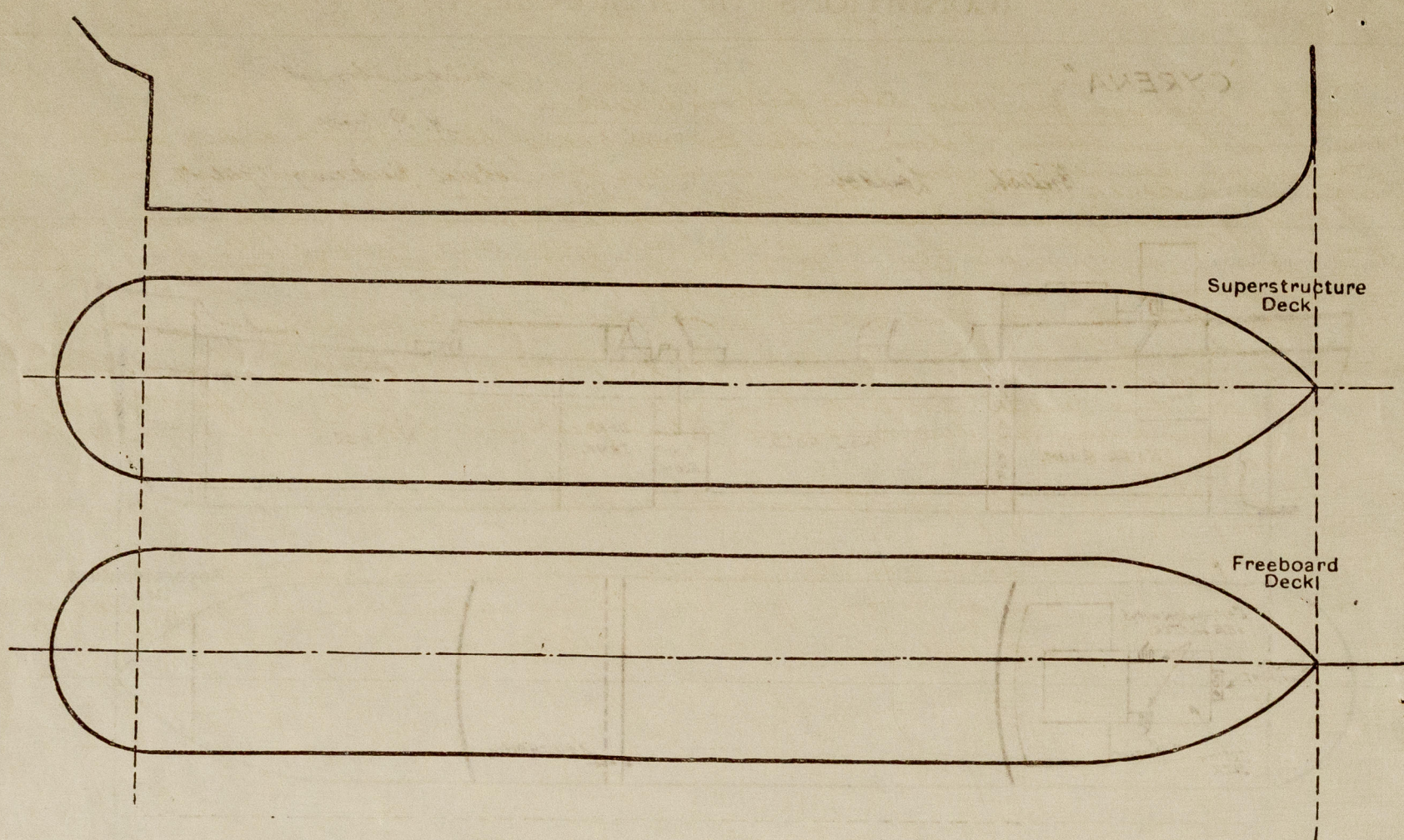


Particulars of Superstructures, Trunks, Casings, Deckhouses.								
	Coaming	Plating	Stiffeners	Spacing	End Attachments of Stiffeners	Size of Openings	Height of Sills	Height of Casings
AFTER BRIDGE FORWARD								
Peep/Bulkhead	✓	42 ✓	8 x 3 x 50 B.A.	2'-4 1/2"	WELDED TOP AND BOTTOM.	2 @ 4'-8" x 2'-5"	18" ✓	8'-0" ✓
AFTER BRIDGE AFTER								
Raised Quarter Deck/Bulkhead	✓	32 ✓	5 x 3 x 40 O.A. 9 STEEL BULKHEADS	3'-0"	NONE. JOINTER RIVET.	2 @ 5'-0" x 2'-2"	18" ✓	8'-0" ✓
Bridge, After Bulkhead	✓	29 ✓	4 x 3 x 34 O.A. 4 5 x 3 x 40 O.A.	2'-8"	NONE.	2 @ 4'-1" x 3'-1" WIDE	22" ✓	7'-6" ✓
Bridge, Forward Bulkhead	✓	42 ✓	8 x 3 x 48 B.A.	2'-8 1/2"	WELDED TOP AND BOTTOM.	1 @ 4'-6" x 2'-3"	18" ✓	7'-6" ✓
Forecastle Bulkhead	✓	29 ✓	4 x 3 x 32 O.A.	2'-6"	NONE. JOINTER RIVET.	PORT 4'-9" x 2'-6" WIDE. — 18" ✓ STBD. 5'-0" x 4'-0" WIDE — 22" ✓		7'-6" ✓
Trunk, Aft	✓							
Trunk, Forward	✓							
Exposed Machinery Casings on Freeboard or Raised Quarter Decks	✓							
Exposed Machinery Casings on Superstructure Decks	✓	26	3 1/2 x 2 1/2 x 30 O.A.	2'-3"	BRACKETS TOP TO CASING TOP.	4'-6" x 2'-3" IN COMPANIONWAY.	21" ✓	2'-9" AND 8'-0" ✓
Machinery Casings within Superstructures not fitted with Class I Closing Appliances	✓	26	3 1/2 x 2 1/2 x 30 O.A.	2'-3"	NONE.	5'-6" x 1'-10" — 12" ✓ 8 WINDOWS 3'-9" x 2'-6" — 3'-9" ✓		8'-0" ✓
Deckhouses on Flush Deck Ships	✓							

Particulars of Closing Appliances (state if capable of being manipulated from both sides).	
AFTER BRIDGE AFTER BULKHEAD.	
Peep Bulkhead	2 openings with hinged wood doors manipulated from both sides. ✓
AFTER BRIDGE FORWARD	
Raised Quarter Deck Bulkhead	2 openings with hinged steel W.T. doors manipulated from both sides. ✓
Bridge, After Bulkhead	2 openings with portable steel plates & hook bolts & 1 opening with steel hinged W.T. door manipulated both sides. ✓
Bridge, Forward Bulkhead	1 opening with steel hinged W.T. door manipulated from both sides. ✓
Forecastle Bulkhead	1 opening with portable steel plate & hook bolts & 1 opening with steel hinged W.T. door manipulated both sides. ✓
Exposed Machinery Casings on Freeboard or Raised Quarter Decks	✓
Exposed Machinery Casings on Superstructure Decks	Hinged steel weathertight door P & S in companion manipulated both sides. ✓
Machinery Casings within Superstructures not fitted with Class I Closing Appliances	Hinged steel gastight doors manipulated both sides. ✓
Deckhouses on Flush Deck Ships	✓

PARTICULARS OF PROTECTION TO OPENINGS, ETC.

The following diagrams should be used to indicate the positions of cargo and coaling hatchways, gangway, cargo and coaling ports, ventilators, companionways, etc., which would affect the seaworthiness of the ship:—



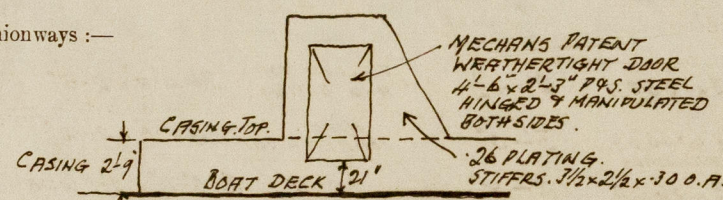
Particulars of fiddle, funnel and ventilator coamings, engine room skylight and other openings in machinery casing tops and their means of closing:—

Fiddle covers over Boiler Room of steel, permanently attached & of substantial construction.
Funnel of steel, strongly constructed & well supported on casing.
Engine room skylight of steel, of substantial construction with hinged steel covers & bulwarks.
Ventilators on casing top of strong construction & with satisfactory means of closing.

Particulars of Flush Bunker Scuttles:—

none.

Particulars of Companionways:—



Particulars of Ventilators in exposed positions on freeboard and superstructure decks:—

UPPER DECK.
2 off to steering gear 6" dia. 36" x 30."
1 " " Rope locker 6" " " " "
2 " " Reel rack 6" " " " "
2 " " Pump room 12" " " " " " 6" dia. x 36" EFFICIENTLY STRAIGHT.
FORECASTLE DECK.
2 off to tonnage space 18" dia. 36" x 32"
1 " " paint store 8" " 36" x 30"
1 " " Store & lower store 8" " 36" x 30"

Vents on deckhouse tops & upper bridges of substantial construction & ample height.

All ventilators provided with efficient means of closing.

BRIDGE DECK.

7 off to lower deck stores 6" dia. 30" x 30"

AFTER BRIDGE DECK.

2 off to passageway 11" dia. 30" x 32"
14 " to accomm. 6" high S.D. mushroom.

Particulars of Air Pipes in exposed positions on freeboard, raised quarter, or superstructure decks:—

Six pipes on freeboard deck from ballast and oil fuel tanks of substantial construction with minimum height of 36" to opening. Double gauges fitted to air pipes from oil fuel tanks.
Six pipes on superstructure decks of substantial construction with minimum height of 18" to opening.
All air pipes fitted with efficient means of closing.

Particulars of Gangway Cargo and Coaling Ports:—

none.

"Cyrena."

Particulars of Scuppers and Sanitary Discharge Pipes:—

Overboard discharges from spaces below freeboard deck:—

- From drain hat in bottom of chain locker, led overboard below load waterline with 2" screw down non-return valve at shell controlled from above freeboard deck and fitted with indicator to show whether valve is open or shut.
- From refrigerated spaces on lower deck aft. 1 port and 1 starboard, 2" scuppers led overboard just above load waterline with storm valves at shell, and having plug cocks controlled from above freeboard deck & fitted with indicators to show whether open or shut. In addition the scuppers are fitted with a water sealed trap.

Other than the above there are no overboard scuppers or discharges from spaces below freeboard deck.

Enclosed tween decks are drained to hold bilges and machinery space bilges. Scuppers and sanitary discharges from accommodation in after bridge and mess ship accommodation, all led overboard below freeboard deck through storm valves at the ship's side.

All storm valves of gunmetal and of substantial construction.

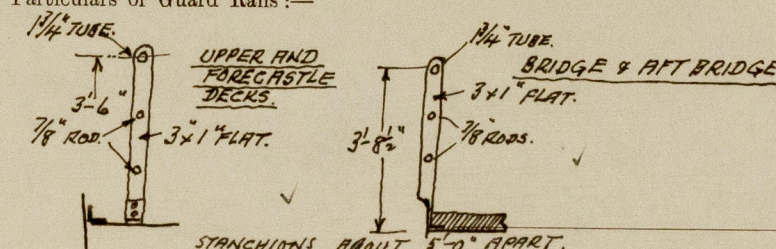
Particulars of Side Scuttles:—

10" and 12" dia through shell of substantial construction of brass and of approved type, all having efficient hinged deadlights of cast steel and secured watertight.

Vertical distance of Sill of lowest Side Scuttle above top of keel

Approximately 31'-0" ✓

Particulars of Guard Rails:—



Particulars of Gangways, Lifelines, etc.:—

Efficient lifelines provided in forward and after wells with permanent eyeplates for attachment to superstructure bulwarks and derrick tables.

Particulars of Freeing Arrangements.

	Length of Bulwark	Height of Bulwark	Size of Freeing Ports	Number each side	Area each side	Rule area each side
After Well ...	NONE.	✓	✓	✓	✓	✓
Forward Well ...	4'-3"	3'-6"	NONE. BULWARK AFT OF FORE END OPEN RAILS FOR ABOUT 50% WELL.	✓	✓	✓

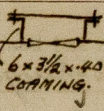
State position of each freeing port ... After Well:— ✓ ✓

(F. and A. position and height above deck edge) Forward Well:— ✓ ✓

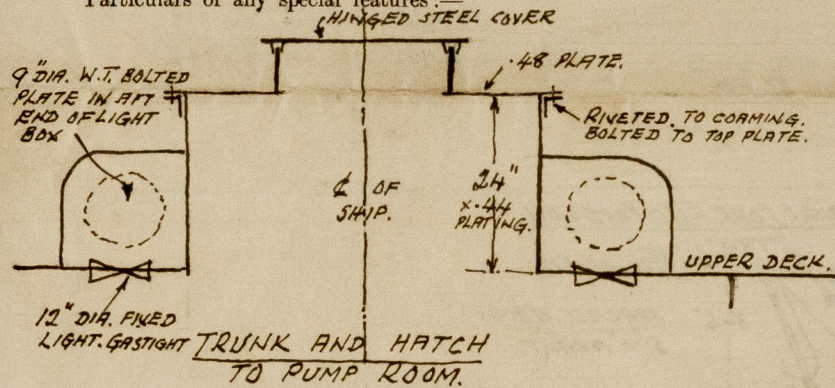
State whether the freeing ports are fitted with shutters, bars, or rails, and give particulars of such:— ✓ ✓

Additional area where sheer is less than standard. ✓ ✓

PARTICULARS OF PROTECTION TO OPENINGS, ETC.

HATCHWAYS ON FREEBOARD AND SUPERSTRUCTURE DECKS.											
Description of Hatchway	No.1	No.2	No.3	No.4	2 OFF DEEP TANK MATCHES	To PUMP ROOM ON TRUNK ROPESTORE AFT.	ACCESS SCUTTER TO ROPESTORE AFT.	MANHOLES TO CAPPERDAIN, O.P. BUNKER & O.P. SETTLING TKS.	ACCESS HATCH AFT OF AFTER BRIDGE.	ACCESS TO STAIRS BELOW FORECASTLE.	
Dimensions of Hatchway	10' F9A x 12' THWARTSHIPS	10' x 12'	10' x 12'	10' x 12'	8' F9A x 10' THWARTSHIPS	2' x 1'-6"	15" DIA.	24" x 18"	2'-6" x 2'-6"	2'-6" x 2'-6"	
COAMINGS	Height above Deck ... 2'-6" Thickness { Sides44 Ends50 Stiffeners ... NONE Brackets, Stays ... 7x.44 B.P.	As No.1.	As No.1.	As No.1.	2'-6" .44 .44 NONE 7x.44 B.P.	6" ABOVE TRUNK. 6x3x.320A .38 .38 NONE NONE	 6x3 1/2 x .40 COAMING.	9" B.A. COAMING	9" B.A. COAMING		
HATCH BEAMS	Number ... Spacing ... Scantling and Sketch ... Bearing Surface ...	NONE	NONE	NONE	NONE	NONE	✓	✓	✓	✓	
FORE AND AFTERS	Number ... Spacing ... Unsupported Lengths ... Scantling and Sketch ... Bearing Surface ...	NONE	NONE	NONE	NONE	NONE	✓	✓	✓	✓	
HATCH COVERS	Material ... STEEL Thickness50 How fitted ... HINGED GASTIGHT 7x3x.35 B.A. STIFFERS SPACED 2'-6" "GROO" Bearing Surface ...	As No.1.	As No.1.	As No.1.	STEEL .50 HINGED GASTIGHT. 6x3x.35 B.A. STIFFERS SPACED 2'-6" "GROO" PACKING & HINGED TOGGLES 15" APART GASTIGHT MANHOLE FOR ACCESS IN L.D. 24" x 18" ON 3/2" COAMING	STEEL .40 5 TOGGLES "GROO" PACKING.	STEEL .32 HINGED N.T. WITH 3/4" APART O.T. PACKING	STEEL .40 3/4" BOLTS N.T. WITH 3/4" APART O.T. PACKING & TOGGLES	HINGED STEEL .40 N.T. WITH PACKING & TOGGLES	HINGED STEEL .40 N.T. WITH PACKING & TOGGLES	
Spacing of Cleats	PACKING & HINGED TOGGLES 15" APART										
Number of Tarpaulins	GASTIGHT MANHOLE FOR ACCESS IN L.D. 24" x 18" ON 3/2" COAMING		✓	✓							
*Are wood fore and afters steel shod at all bearing surfaces? ✓ Are battens and wedges efficient and in good condition? ✓ Are tarpaulins in good condition and in accordance with rule requirements? ✓ Are lashings provided in accordance with rule requirements? ✓											

Particulars of any special features:—



There are no latches on superstructure decks. ✓

Endorsement at first survey and at surveys for renewal of Certificate:—

The fittings and appliances are in accordance with the particulars shown on this form (or as now modified) and are in good condition.

ML-D



© 2021

Lloyd's Register Foundation