

10 JAN 1948

Index No. 33611
(For London Office only)

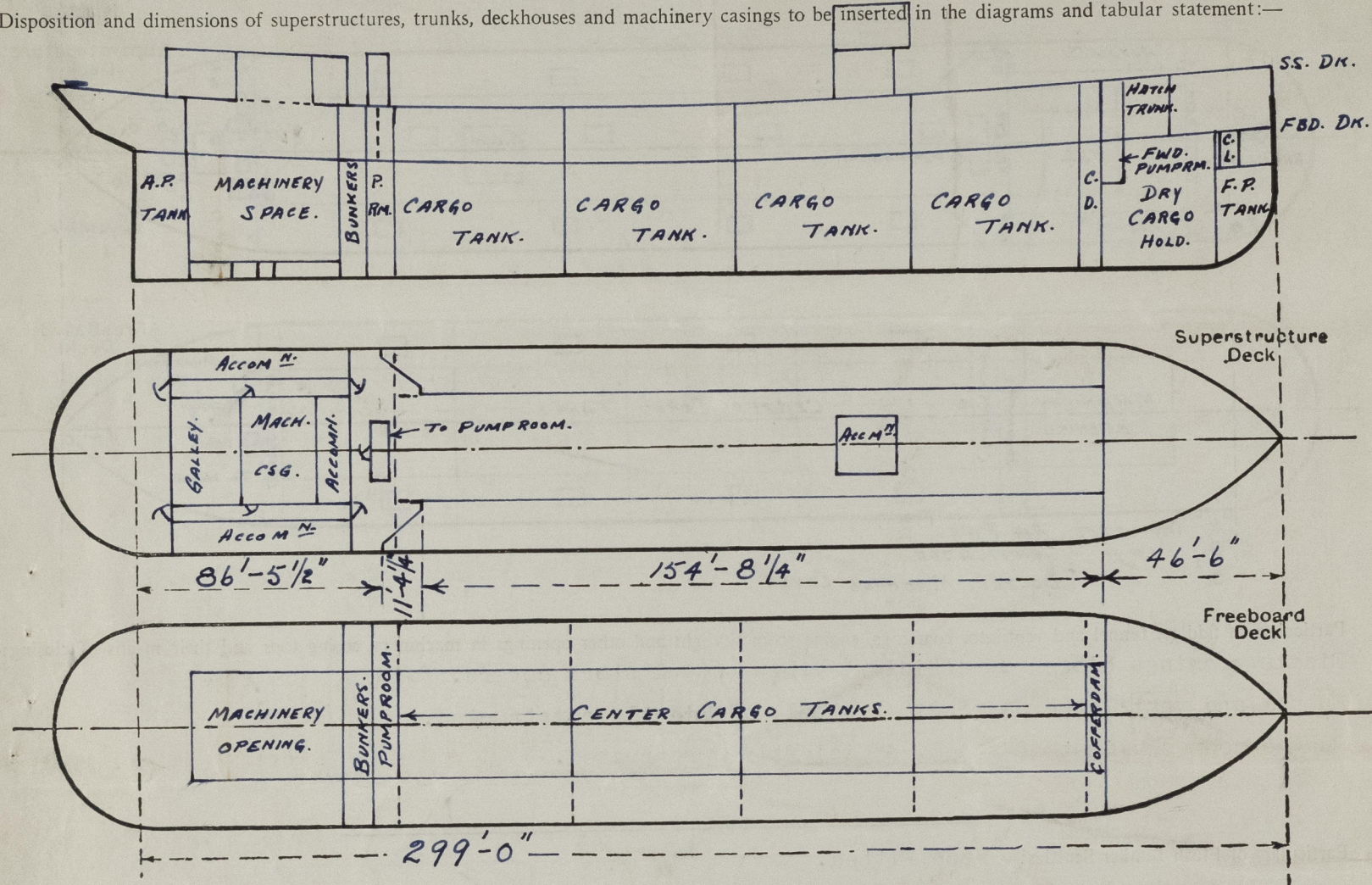
Lloyd's Register of Shipping.

SURVEYS FOR FREEBOARD.

(CONDITIONS OF ASSIGNMENT.)

Ship's Name "ALDEGONDA" Port of Survey Hong Kong
 Official Number - Surveyor's Signature J. Hill
 Nationality and Port of Registry Netherlands, The Hague Date of Survey December, 1947.

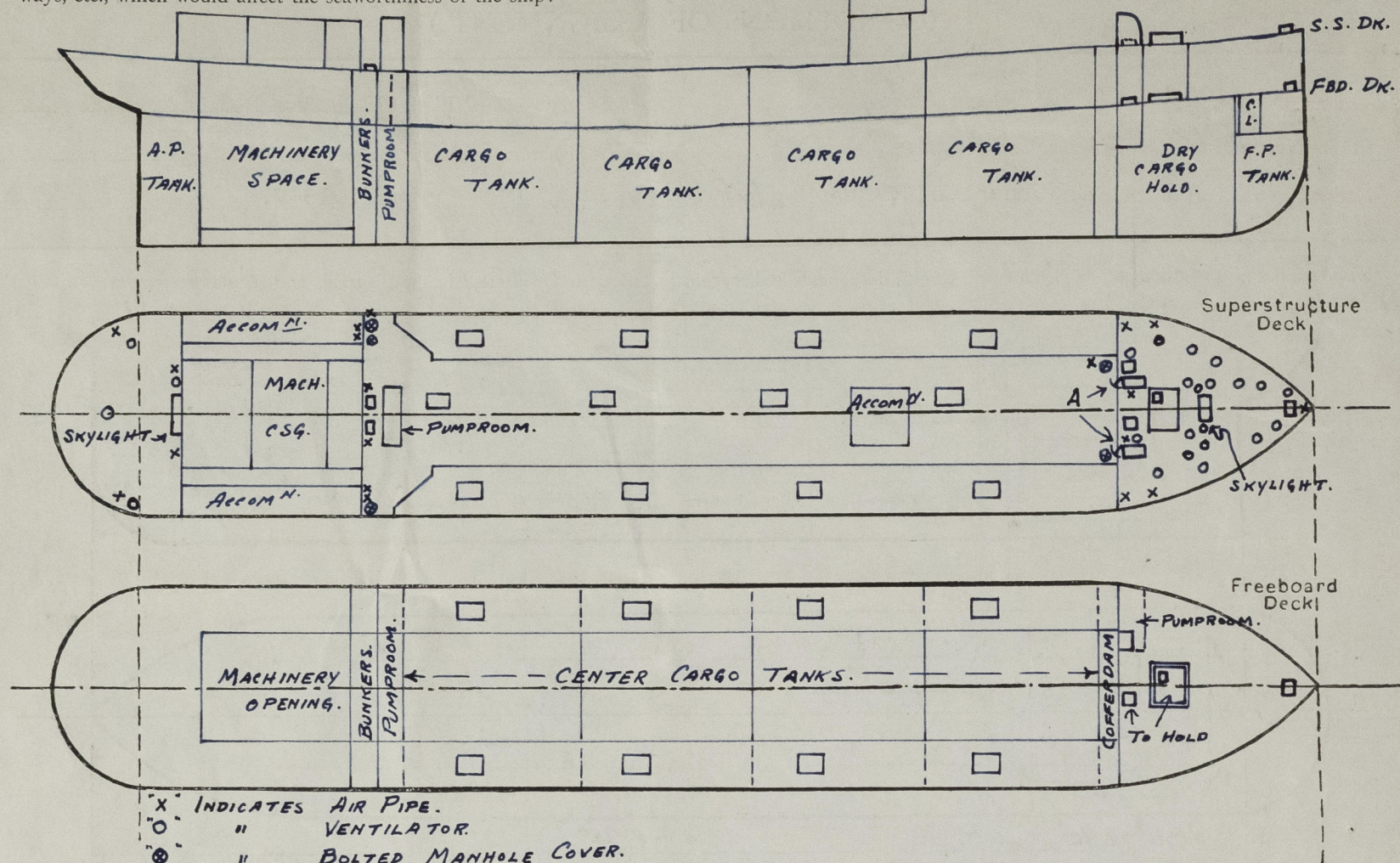
Disposition and dimensions of superstructures, trunks, deckhouses and machinery casings to be inserted in the diagrams and tabular statement:—



Particulars of Superstructures, Trunks, Casings, Deckhouses								
	Coaming Ins.	Plating Ins.	Stiffeners Ins.	Spacing Ins.	End Attachments of Stiffeners	Size of Openings Ins.	Height of Sills Ins.	Height of Casings
Poop Bulkhead	-	.44	6x3x.30 B.A.	26	Brackets top & B.T.M.	None	-	7'-3"
Poop S.S. Bulkhead	-	.44	6x3x.30 B.A.	26	Brackets top & B.T.M.	None	-	7'-6"
Raised Quarter Deck Bulkhead	.38	.30	3 1/2 x 2 1/2 x .31 O.A.	26	None	54 x 27	18	7'-6"
Bridge, After Bulkhead	-	-	-	-	-	-	-	-
Bridge, Forward Bulkhead	-	-	-	-	-	-	-	-
Forecastle Bulkhead	-	.40	3 1/2 x 3 x .30 O.A.	30	None	None	-	7'-3"
Trunk, Aft	.40	.40	6x3x.31 B.A.	26	Brackets at top	None	-	7'-3"
Trunk, Forward	-	-	-	-	-	-	-	-
Exposed Machinery Casings on Freeboard or Raised Quarter Decks	-	-	-	-	-	-	-	-
Exposed Machinery Casings on Superstructure Decks Pump RM.	.25	.25	4x2 1/2 x .31 O.A.	26	None	54 x 27	17	7'-6"
Machinery Casings within Superstructures not fitted with Class I Closing Appliances	-	-	-	-	-	-	-	-
S.S. Deck	.40	.25	3 1/2 x 2 1/2 x .28 O.A.	25	Brackets top & B.T.M.	59 x 24	18	7'-0"
Deckhouses on Push Deck Ships	-	-	-	-	-	-	-	-
Particulars of Closing Appliances (state if capable of being manipulated from both sides)								
Poop Bulkhead	No openings.							
Poop S.S. Bulkhead	Hinged steel W.T. Doors capable of being manipulated from both sides.							
Raised Quarter Deck Bulkhead	Hinged steel W.T. Doors capable of being manipulated from both sides.							
Bridge, After Bulkhead Trunk	No openings.							
Bridge, Forward Bulkhead	-							
Forecastle Bulkhead	No openings							
Exposed Machinery Casings on Freeboard or Raised Quarter Decks	-							
Exposed Machinery Casings on Superstructure Decks Pump RM.	Hinged steel W.T. Door capable of being manipulated from both sides.							
Machinery Casings within Superstructures not fitted with Class I Closing Appliances	-							
S.S. Deck	Hinged steel doors capable of being manipulated from both sides.							
Deckhouses on Push Deck Ships	-							

PARTICULARS OF PROTECTION TO OPENINGS, ETC.

The following diagrams should be used to indicate the positions of cargo and coaling hatchways, gangway, cargo and coaling ports, ventilators, companionways, etc., which would affect the seaworthiness of the ship:—



Particulars of fiddle, funnel and ventilator coamings, engine room skylight and other openings in machinery casing tops and their means of closing:—
Fiddle openings closed by efficient hinged steel storm covers. ✓

Funnel and ventilator coamings of steel, efficiently constructed. ✓

Engine room skylight of steel, efficiently constructed. ✓

Particulars of Flush Bunker Scuttles:— None Fitted. ✓

Particulars of Companionways:—

"A" - opg. 58" x 25", cmg. 19½" with hinged steel door manipulated from both sides to strong steel companionway to accommodation spaces in forecastle ✓

Particulars of Ventilators in exposed positions on freeboard and superstructure decks:—

- 2 @ 11" dia., cmg. 36" x .34" to dry cargo hold.
- 1 @ 9" dia., cmg. 36" x .32" to forward pump room.
- 2 @ 8" dia., cmg. 36" x .31" to lower forepeak store.
- 3 @ 8" dia., cmg. 30" x .32", 1 to A.P. tank, 1 to steering engine compartment, and 1 to crew's Accommodation in poop.
- 12 @ 7" dia., cmg. 36" x .31" to accommodation spaces in Forecastle.
- 1 @ 5" dia., Gooseneck type, opg. 7½" above deck, to upper F.P. Store in forecastle.
- 1 @ 3½" dia., Gooseneck type, opg. 9" above deck to crew washroom in poop.
- 4 @ 2½" dia., Gooseneck type, opg. 6" above deck, to W.C. & Bathrooms in forecastle.

No ventilators fitted to exposed freeboard deck.

All ventilator coamings provided with wood plugs and canvas covers. ✓

Particulars of Air Pipes in exposed positions on freeboard, raised quarter, and superstructure decks:—

- To built-in Fresh Water Tank in Forecastle - 2½" dia., opg. 12" above forecastle Deck
- To F.P. tank, 3" dia., opg. 9" above forecastle deck.
- To built-in Fresh water tank in poop, 3" dia., opg. 7" above poop deck.
- To A.P. Tank, 3" dia., opg. 9" above poop deck.
- To E.R. Double Bottom Tanks, 3½" dia., opg. 24" above poop deck.
- To O.F. Bunkers, 3" dia., opg. 7'-6" above poop deck.
- To Forward Cofferdam, 3" dia., opg. 30" above forecastle deck.

All air pipes provided with wood plugs at openings, except those from O.F. tanks which have hinged steel covers at openings. ✓

Particulars of Gangway Cargo and Coaling Ports:— None Fitted

ALDEGONDA.

Particulars of Scuppers and Sanitary Discharge Pipes:—

Scuppers and sanitary discharges from superstructure on poop discharge overboard through open ended pipes fitted to poop side plating. ✓

Scuppers and sanitary discharges from enclosed poop and forecastle discharge overboard immediately below the freeboard deck and fitted with brass automatic non-return storm valves at ship's sides. ✓

Scuppers from refrigerated chambers on freeboard deck aft, Port side, discharge to engine room bilges ✓

No sanitary discharges are led from spaces below the freeboard deck. ✓

Particulars of Side Scuttles:—

To Poop and Forecastle, 11" dia., efficiently constructed with brass frames and permanently attached deadlights. ✓

To superstructure on Poop, 14" dia., efficiently constructed with brass frames and permanently attached deadlights. ✓

To deckhouse on superstructure deck, 10" & 14" dia., efficiently constructed with brass frames and permanently attached deadlights. ✓

No side scuttles fitted in shell plating below freeboard deck. ✓

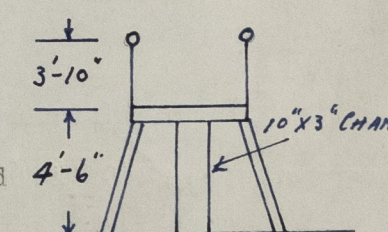
Vertical distance of Sill of lowest Side Scuttle above top of keel 21'-0½" ✓

Particulars of Guard Rails:— On freeboard deck, strong steel stanchions 3'-6" in height, spaced about 4 ft. apart, with 3 rails and efficiently stayed to deck. ✓

On superstructure decks, strong steel stanchions 3'-6" in height, spaced about 5 ft. apart, with 3 rails and efficiently stayed to deck. ✓

Particulars of Gangways, Lifelines, etc.:—

Gangway from poop to midship house, on trunk deck, of steel plates and angles, 4'-6" in height, supports of 10" x 3" channels, spaced about 8 ft. apart, efficiently stayed and fitted with guard rails with strong steel stanchions 3'10" in height, spaced about 6 ft. apart, with one rail and efficiently stayed to platform ✓



Particulars of Freeing Arrangements						
	Length of Bulwark	Height of Bulwark	Size of Freeing Ports	Number each side	Area each side	Rule area each side
After Well						
Forward Well						
State position of each freeing port { After Well:— X						
(F. and A. position and height above deck edge) {			Forward Well:— X			
State whether the freeing ports are fitted with shutters, bars, or rails, and give particulars of such:— X						
Additional area where sheer is less than standard. X						

PARTICULARS OF PROTECTION TO OPENINGS, ETC.

HATCHWAYS ON FREEBOARD AND SUPERSTRUCTURE DECKS										In Forecastle Freeboard Deck	
Description of Hatchway	Dry Cargo Hold	Dry Cargo Hold Escape	F.P. Store	FWD. Pump Rm.	To D.C. Hatch Cover	Cargo Tanks Center	Cargo Tanks Wing	Cross Bunker	Dry Cargo	F.P. Store Lower	
Dimensions of Hatchway	9'1"x10'0"	3'0"x2'1-6"	2'1-0"x2'1-0"	3'1-0"x2'1-6"	2'1-6"x2'1-6"	4'4'1-6"x3'1-6"	8'3'1-1"x1'1-10"	2'2'x2'2'1-2"	9'1-0"x8'1-6"	2'x2'1"	
COAMINGS	Height above Deck	31"	9"	9"	9"	40"	9"	9"	9"	9"	
	Thickness { Sides	.50"	.50"	.50"	.50"	.50"	.50"	.42"	.50"	.50"	
	Ends	.50"	.50"	.50"	.50"	.50"	.50"	.42"	.50"	.50"	
	Stiffeners B.A. FLG.	3 1/2"	-	-	-	-	-	-	-	-	
Brackets, Stays	-	-	-	-	-	-	-	-	-	-	
HATCH BEAMS	Number										
	Spacing										
FORE AND AFTERS	Number										
	Spacing										
HATCH COVERS	Material				STEEL						
	Thickness	.55"	.50"	.50"	.50"	.50"	.38"	.40"	.50"	.60"	
Spacing of Cleats	How fitted	W.T.	W.T.	W.T.	W.T.	W.T.	O.T.	O.T.	O.T.	W.T.	
	Bearing Surface	-	-	-	-	-	-	-	-	-	
Number of Tarpaulins	16"	16 1/2"	12"	16 1/2"	12"	12"	14 1/2"	14 1/2"	16"	12"	

*Are wood fore and afters steel shod at all bearing surfaces? X
Are battens and wedges efficient and in good condition? X
Are tarpaulins in good condition and in accordance with rule requirements? X
Are lashings provided in accordance with rule requirements? X

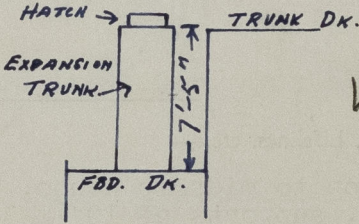
Particulars of any special features:—

Skylight on forecastle deck to accomodation in forecastle, of steel, 7'-2" x 2'-8" x .31" thick, openings 23" above wood deck, fitted with hinging steel W.T. covers secured by toggles.

Skylight on poop deck to steering engine compartment, of steel 8'-3" x 2'-1" x .25" thick, openings 26" above steel deck, fitted with hinging steel W.T. covers secured by toggles.

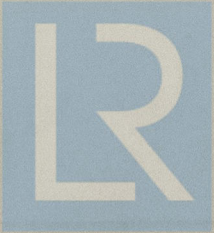
Access openings to forward cofferdam and wing bunkers, cmg. 18" x 14" x 9" high x .35" thick, fitted with steel plate covers. 31" thick, bolted oiltight.

Wing tank hatchways fitted on top of efficiently constructed steel trunks 7'-5" in height above freeboard deck.



Endorsement at first survey and at surveys for renewal of Certificate:—

The fittings and appliances are in accordance with the particulars shown on this form (or as now modified) and are in good condition.



© 2021

Lloyd's Register
Foundation