

LLOYD'S REGISTER OF SHIPPING

SURVEYS FOR FREEBOARD

(COMPUTATION FOR STEAMER, SAILING SHIP, TANKER)

SPLIT RPT. N° 2390 F

Received

Index No.

Govt. Copy

Owners C11

Ship's Name WIENIAWSKI	Official Number	Nationality and Port of Registry POLISH GDYNIA	Gross Tonnage 9100 (APPROX)	Date of Build 1962	Port of Survey SPLIT
Moulded Dimensions: Length 140.40 M Breadth 18.80 M Depth 11.993 M					Date of Survey WHILST BUILDING
Freeboard Length 140.40 M (TO CENTRE OF RUDDER STOCK)					Surveyor's Signature James G. Lambie
Moulded displacement at moulded draught = 85 per cent. of moulded depth 20095 CUBIC METRES					Particulars of Classification + 100A1 (CONTEMPLATED)
Coefficient of fineness for use with Tables 0.747					

DEPTH FOR FREEBOARD (D).		DEPTH CORRECTION.		ROUND OF BEAM CORRECTION.	
Moulded depth	11.993	(a) Where D is greater than Table depth (D-Table depth) R =		Moulded Breadth (B)	18.80
Stringer plate	25 mm	8.33(12.018-9.36) 30 = +664 mm		Standard Round of Beam = $\frac{B \times 12}{50}$	376
Wood Sheathing on exposed deck	NONE	(b) Where D is less than Table depth (if allowed) (Table depth-D) R =		Ship's Round of Beam	380 mm
$T \left(\frac{L-S}{L} \right) =$		If restricted by superstructures	—	Difference	A
Depth for Freeboard (D) =	12.018			Restricted to	
				Correction = $\frac{\text{Diff}}{4} \times \left(1 - \frac{S_1}{L} \right)$	$= \frac{A}{4} \times 7373 = -1 m$

DEDUCTION FOR SUPERSTRUCTURES.

SEE SKETCH
OVERLEAF

	Mean Covered Length (S)	Equivalent Enclosed Length (S ₁)	Height	Height Correction	Effective Length (E)
Poop enclosed	860	860	2.475		860
" overhang	740	370			370
R.Q.D. enclosed					
" overhang					
Bridge enclosed	24.423	24.423	2.475		24.423
" overhang aft	690	518			518
" overhang forward					
F'cle enclosed	9.915	9.915	2.290		9.915
" overhang	835	794			794
Trunk aft					
" forward					
Tonnage opening aft					
" forward					
Total	37.463	36.880			36.880

Standard Height of Superstructure **2.290 m**

" " R.Q.D. **—**

Deduction for complete superstructure **1.067**

Percentage covered $\frac{S}{L} = 26.68$

" " $\frac{S_1}{L} = 26.27$

" " $\frac{E}{L} = 13.14$

Percentage from Table, Line A. **13.14**

(corrected for absence of forecastle (if required))

Percentage from Table, Line B.

(corrected for absence of forecastle (if required))

Interpolation for bridge less than 2L (if required)

Deduction = $1.067 \times 13.14 = -140 m$

SHEER CORRECTION.

Station	Standard Ordinate	S	M	Product	Actual Ordinate	Effective Ordinate	S	M	Product
A.P.	1424	1		1424	1390	1424	1		1424
1/2 L from A.P.	632	4		2528	725	632	4		2528
1/4 L	158	2		316	260	158	2		316
Amidships	0	4		0	0	0	4		0
1/4 L from F.P.	316	2		632	300	300	2		600
1/2 L	1265	4		5060	1180	1180	4		4720
F.P.	2847	1		2847	2560	2560	1		2560
Total				12807					12148

Correction = $\frac{\text{Difference between sums of products}}{18} \left(75 - \frac{S}{2L} \right) = \frac{659}{18} \times (75 - 1334) = + 23 m$

If limited on account of midship superstructure.

Mean actual sheer aft = Excess (limited)

Mean standard sheer aft

Mean actual sheer forward = Deficient.

Mean standard sheer forward

Length of enclosed superstructure forward of amidships =

" " aft of " =

Deduction for Tropical Freeboard.

Addition for Winter and Winter North Atlantic Freeboard.

Depth to Freeboard Deck = 12.018

Summer freeboard = 3.018

Moulded draught (d) = 9.000

Keel allowance =

Extreme draught =

Deduction for Tropical freeboard and addition for =

Winter freeboard = $\frac{d}{48}$ inches = 188 m

Addition for Winter North Atlantic Freeboard (if required) = Not Required

SEE OVER

Deduction for Fresh Water.

Displacement in salt water at summer load water line

$\Delta = 17780$

Tons per inch immersion at summer load water line

T = 57.40

Deduction = $\frac{\Delta}{40 T}$ inches

= 7.74

= 197 m

TABULAR FREEBOARD corrected for Flush Deck (if required)

Correction for coefficient

Depth Correction

Deduction for superstructures

Sheer correction

Round of Beam correction

Correction for Thickness of Deck amidships

Other corrections, scantlings, etc.

E.g. S.M. draught 7.9000 m.

+	-
664	—
—	140
23	—
—	1
64	—
751	141

Summer Freeboard = 3018 mm

SUMMER FREEBOARD amidships from Centre of Disc to top of Deck Line, Wood, Steel, Deck :-

Tropical Fresh Water Line above Centre of Disc

Fresh Water Line

Tropical Line

Winter Line below

Winter North Atlantic Line

Tropical Fresh Water Freeboard

Fresh Water

Tropical

Winter

Winter North Atlantic

3018 mm

2633 mm

2821 mm

2830 mm

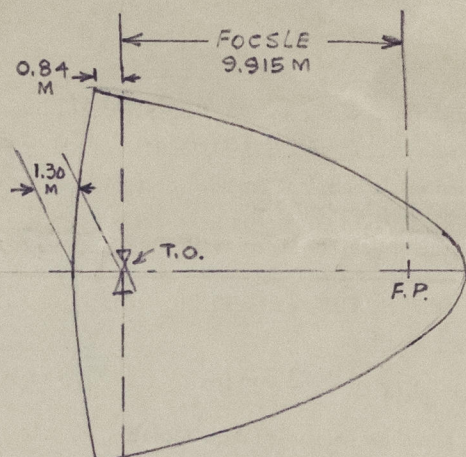
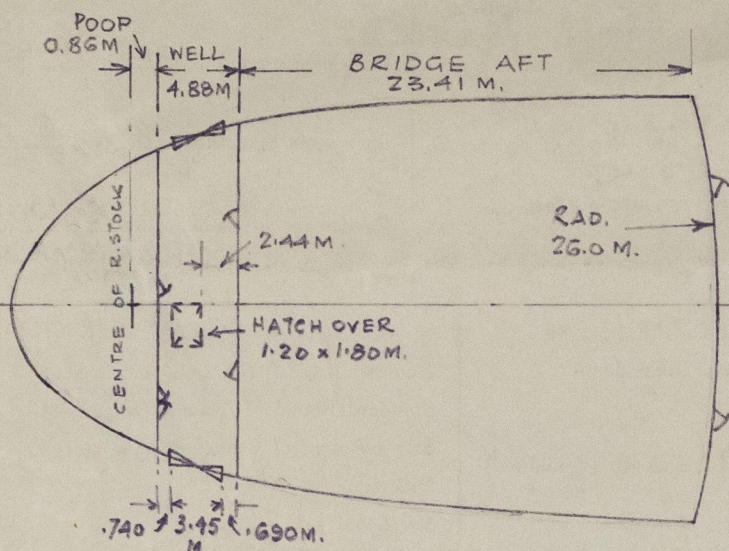
3206 mm

Not Required

Wieniewski.

C.S.D.

A new form should be prepared if any alterations that affect the freeboard have been made. If no such alterations have been made, the Surveyor should endorse the form on this side with his signature and the date.



BREADTH OF FREEBOARD DECK AT BRIDGE FRONT 18.61M
 " " " " FORECASTLE BHD. 11.97M

DRAUGHT METRES	DISPLACEMENT (FULL) 1 TON = 1016 Kg.	TONS PER INCH
9.50	18,880	58.2
9.20	18,190	57.7
8.90	17,510	57.2
8.60	16,835	56.7
8.30	16,170	56.2
8.00	15,510	55.7
7.70	14,855	55.2

Trade of ship INTERNATIONAL CARGO

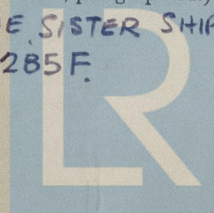
Names of sister ships 'SZYMANOWSKI' YARD N° 168
'NOWONIEJSKI' " " 171

Builder's name and yard number BRODOGRADILISTE 'SPLIT' N° 176

Owners POLISH OCEAN LINES, GDYNIA

TO BE CHARGED
 Fee £ WITH FIRST ENTRY.

List of plans forwarded for reference. (See "Instructions to Surveyors, Part 4, 1950", paragraph 11.)
 PLANS FORWARDED WITH C 11 (COMP) FOR THE SISTER SHIP
 'SZYMANOWSKI', YARD N° 168, SPLIT RPT N° 2285 F.



© 2021

Lloyd's Register
 Foundation