

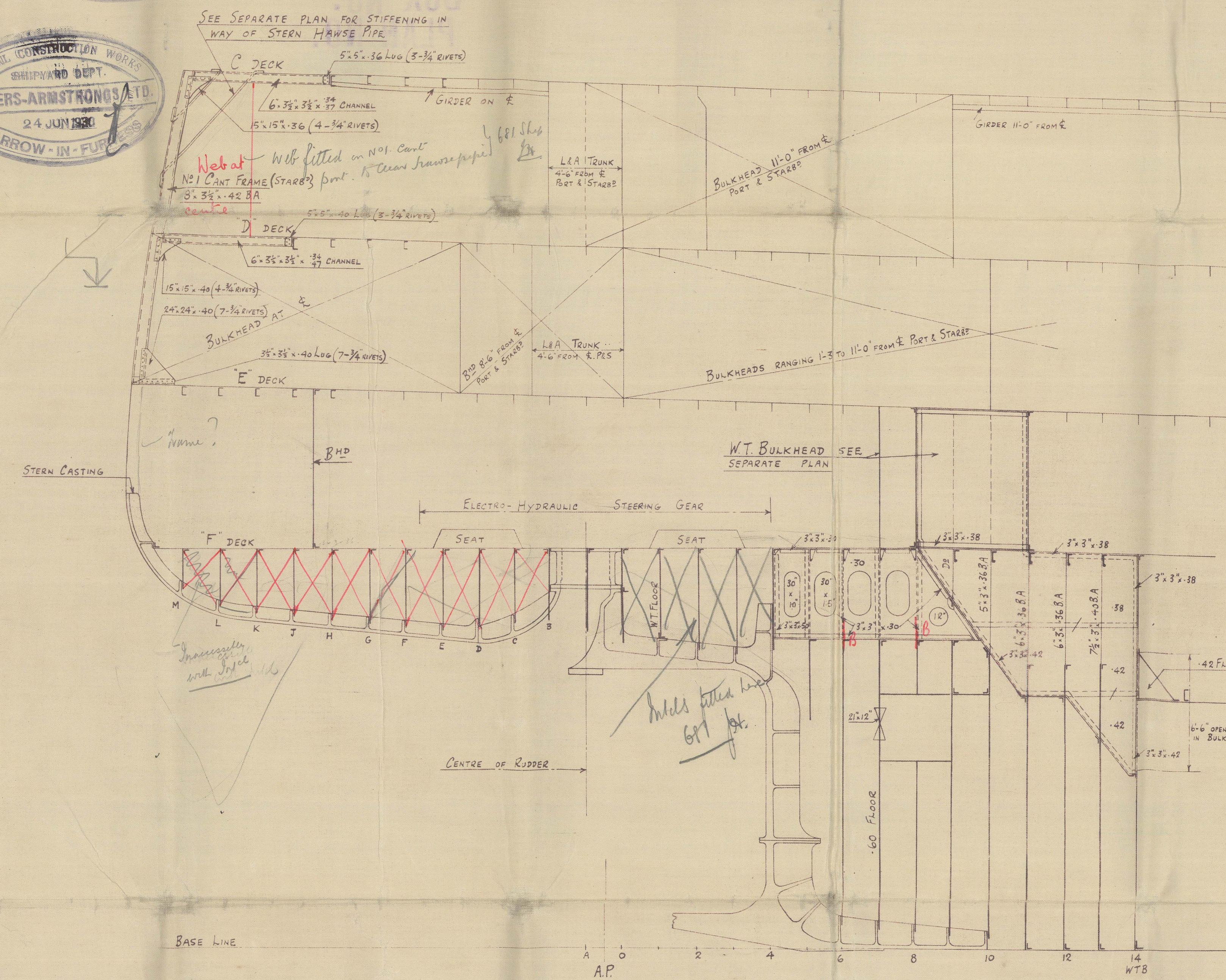
Q.S.S. N°1 (HIGH WALKER YARD)
CRUISER STERN & FRAMING IN AFTER PEAK

SCALE $\frac{1}{8}$ " & $\frac{1}{4}$ " = ONE FOOT.

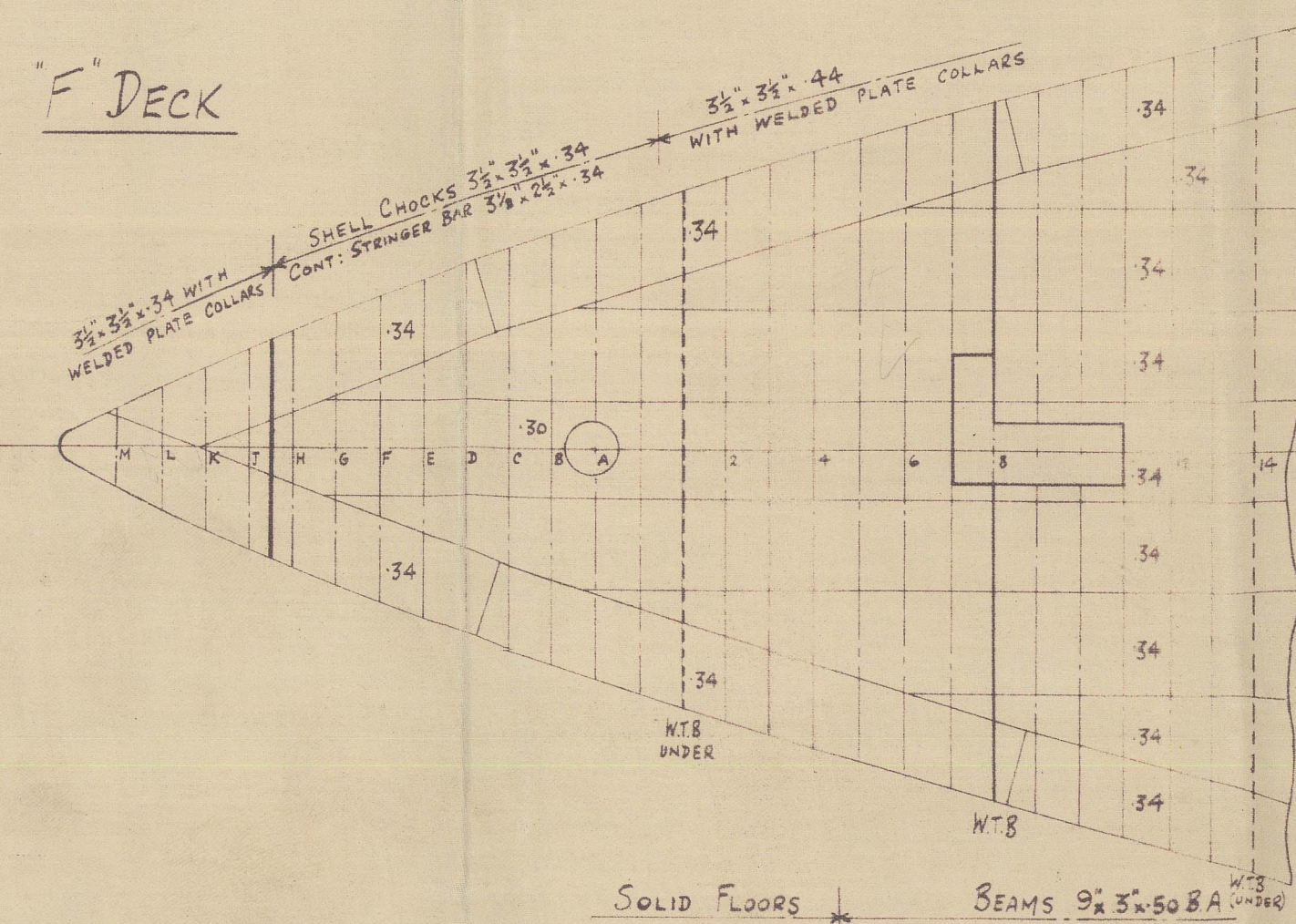
NOTE: WT. B^{MS} IN THIS PORTION WILL BE SUBMITTED SEPARATELY



ELEVATION LOOKING TO PORT



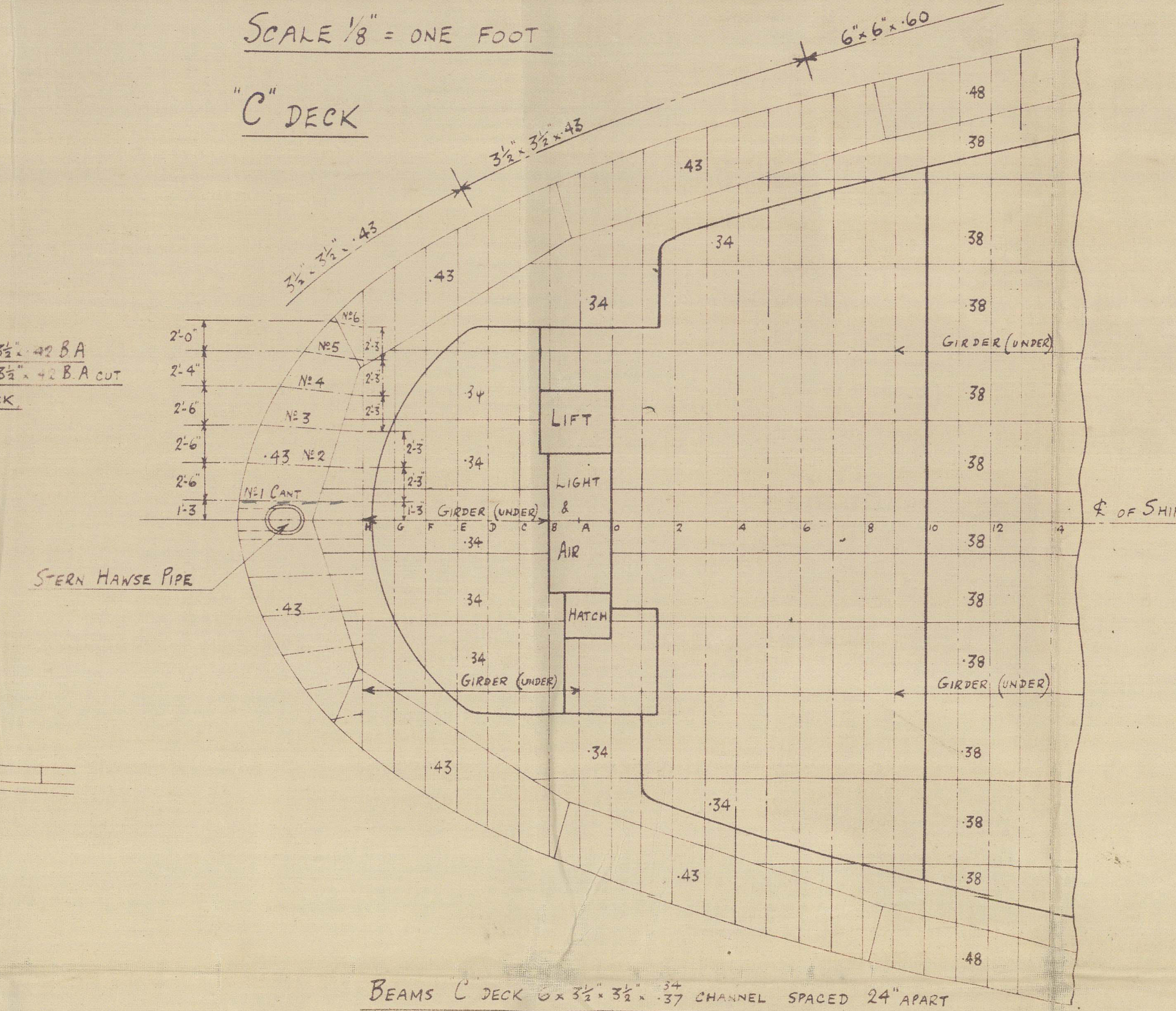
F DECK



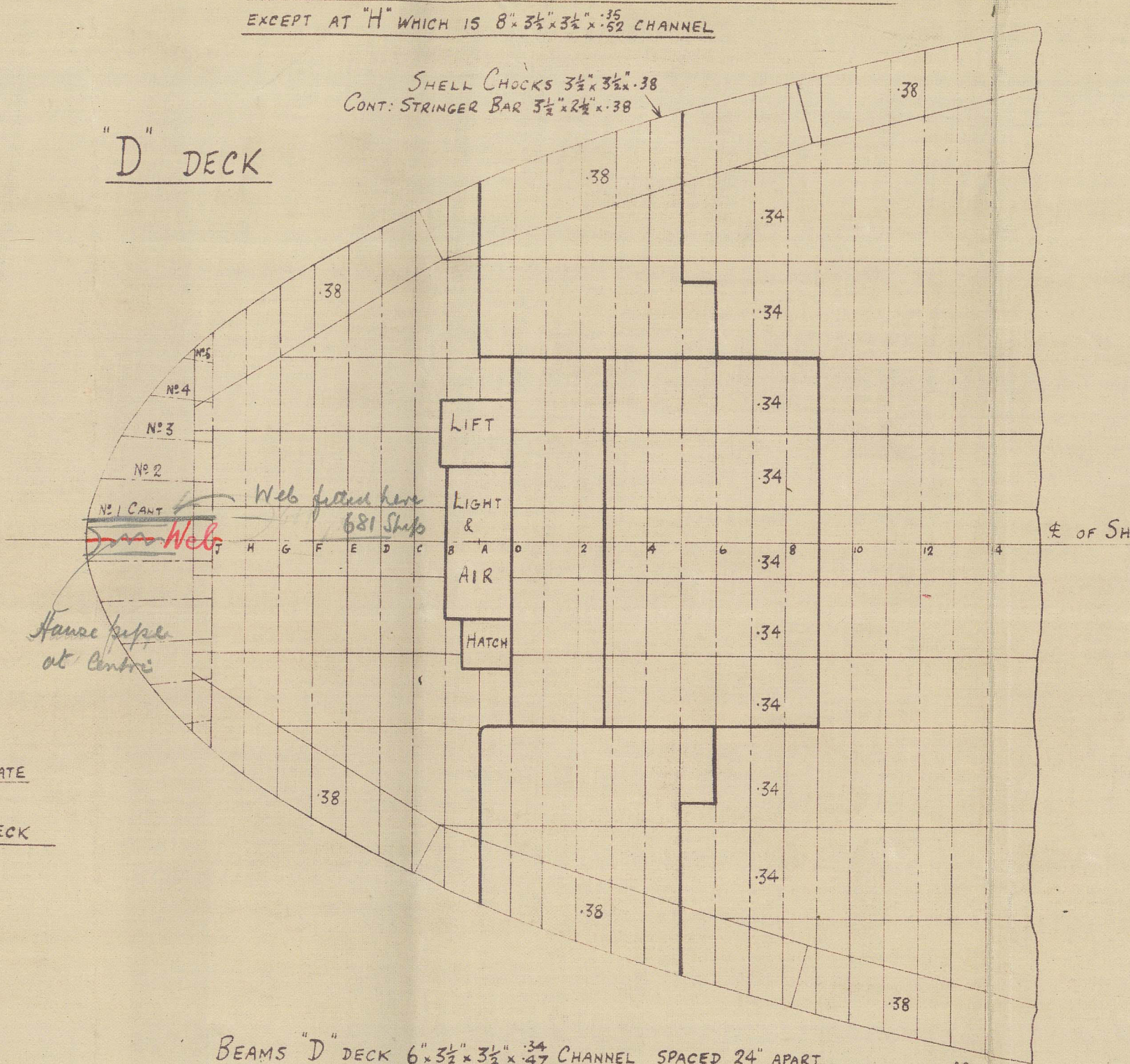
PLAN N° 70

SCALE $\frac{1}{8}$ " = ONE FOOT

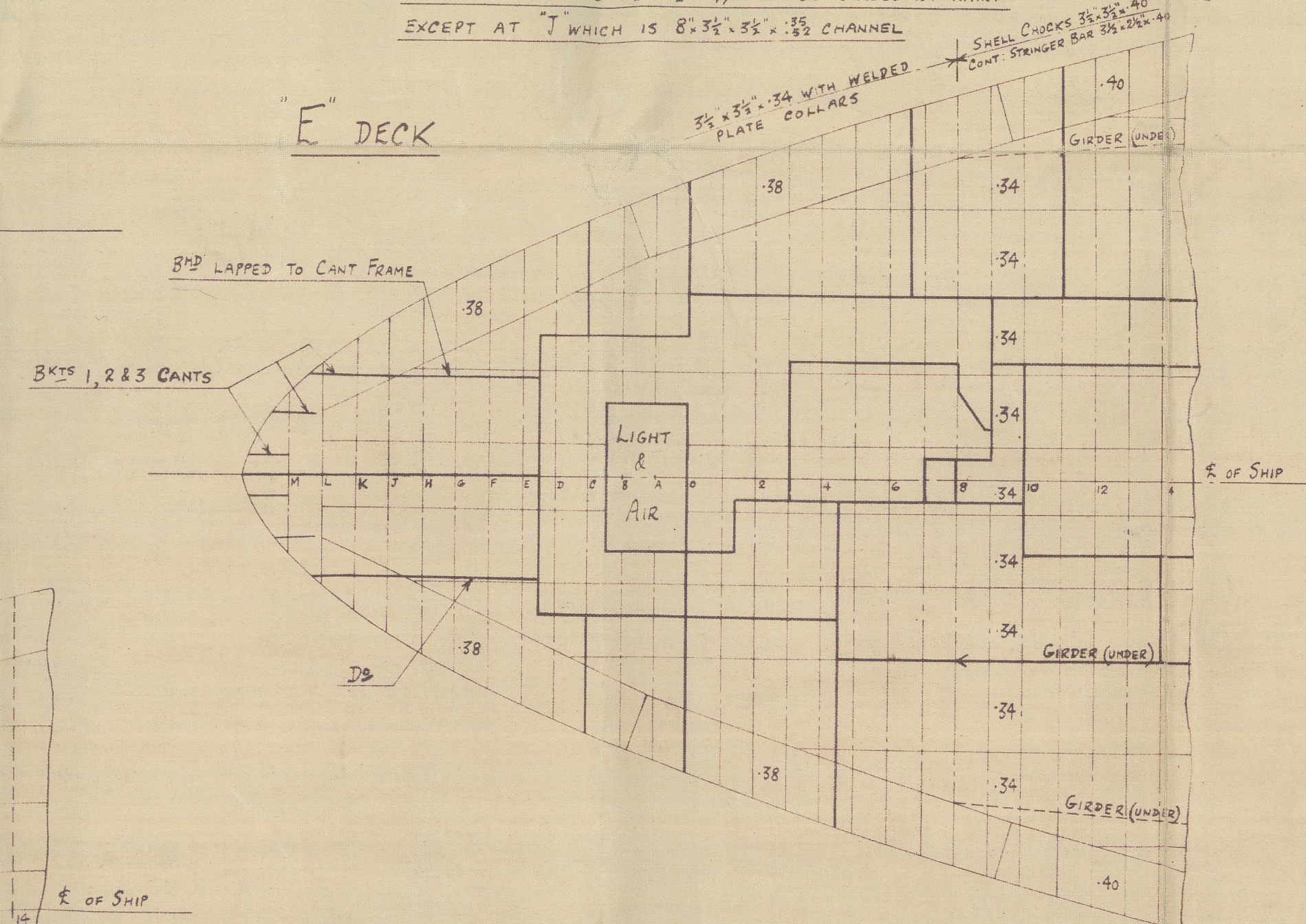
C DECK



D DECK

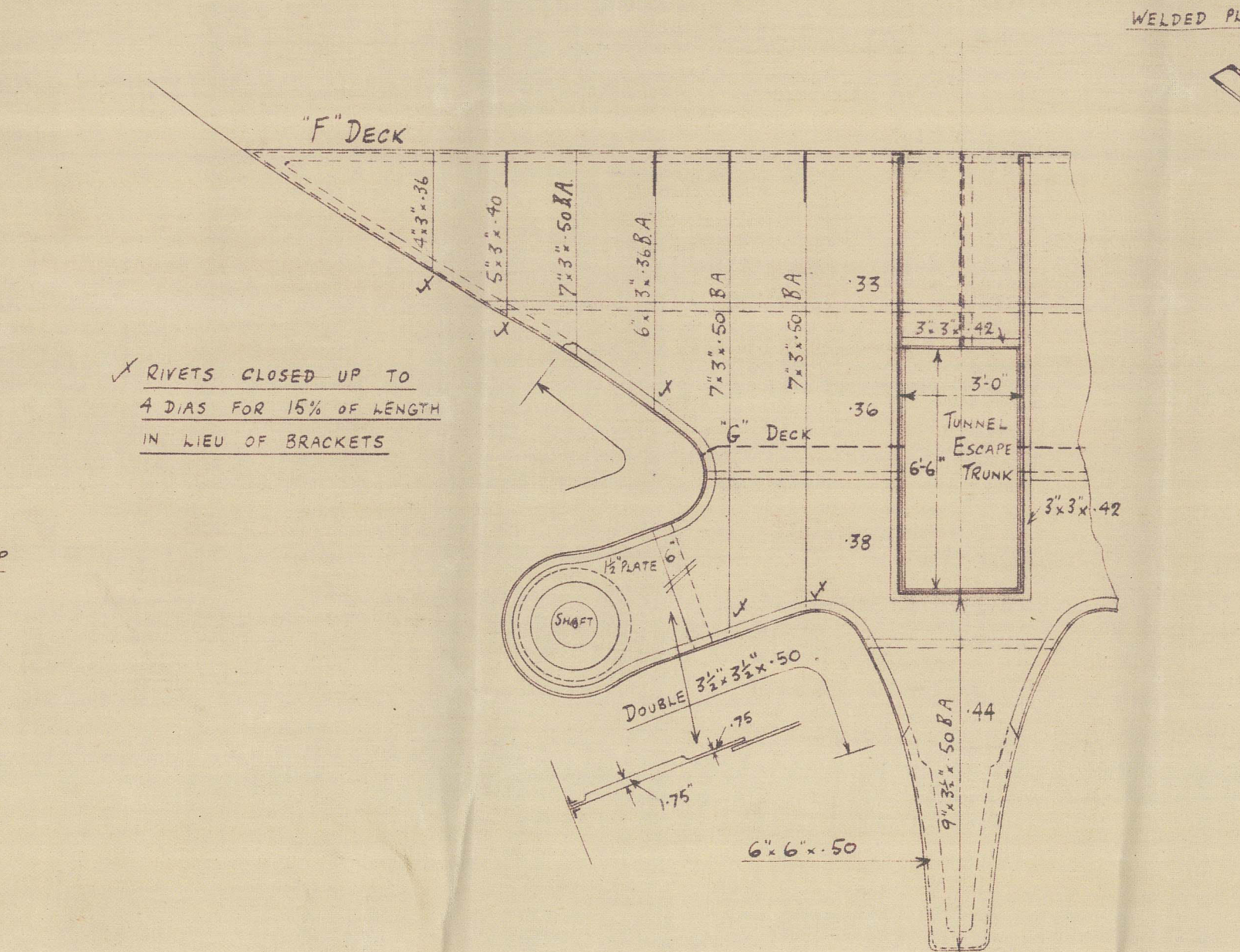


E DECK

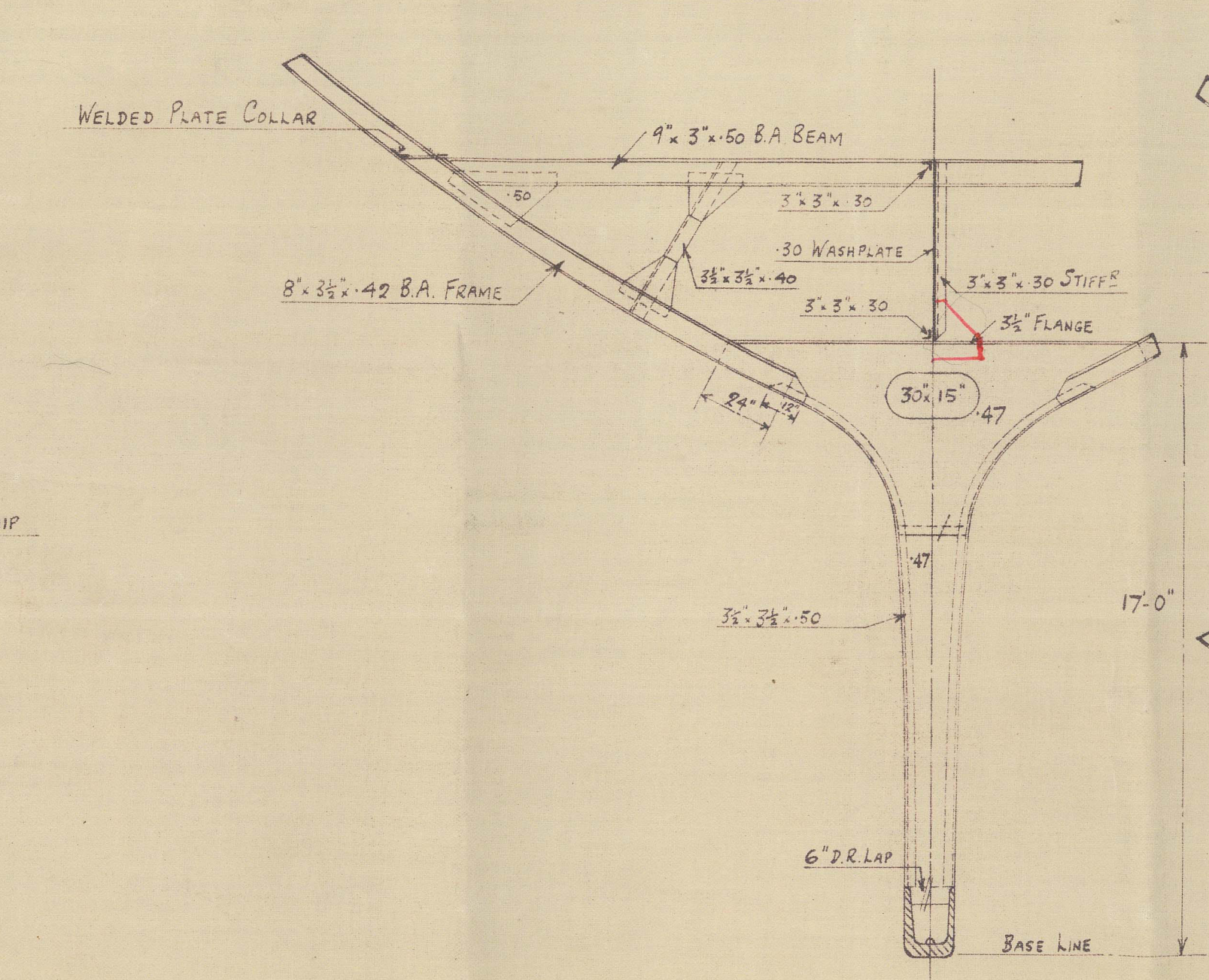


BEAMS E DECK 6' 5 1/2" x 3 1/2" 24" SPACED 24" APART

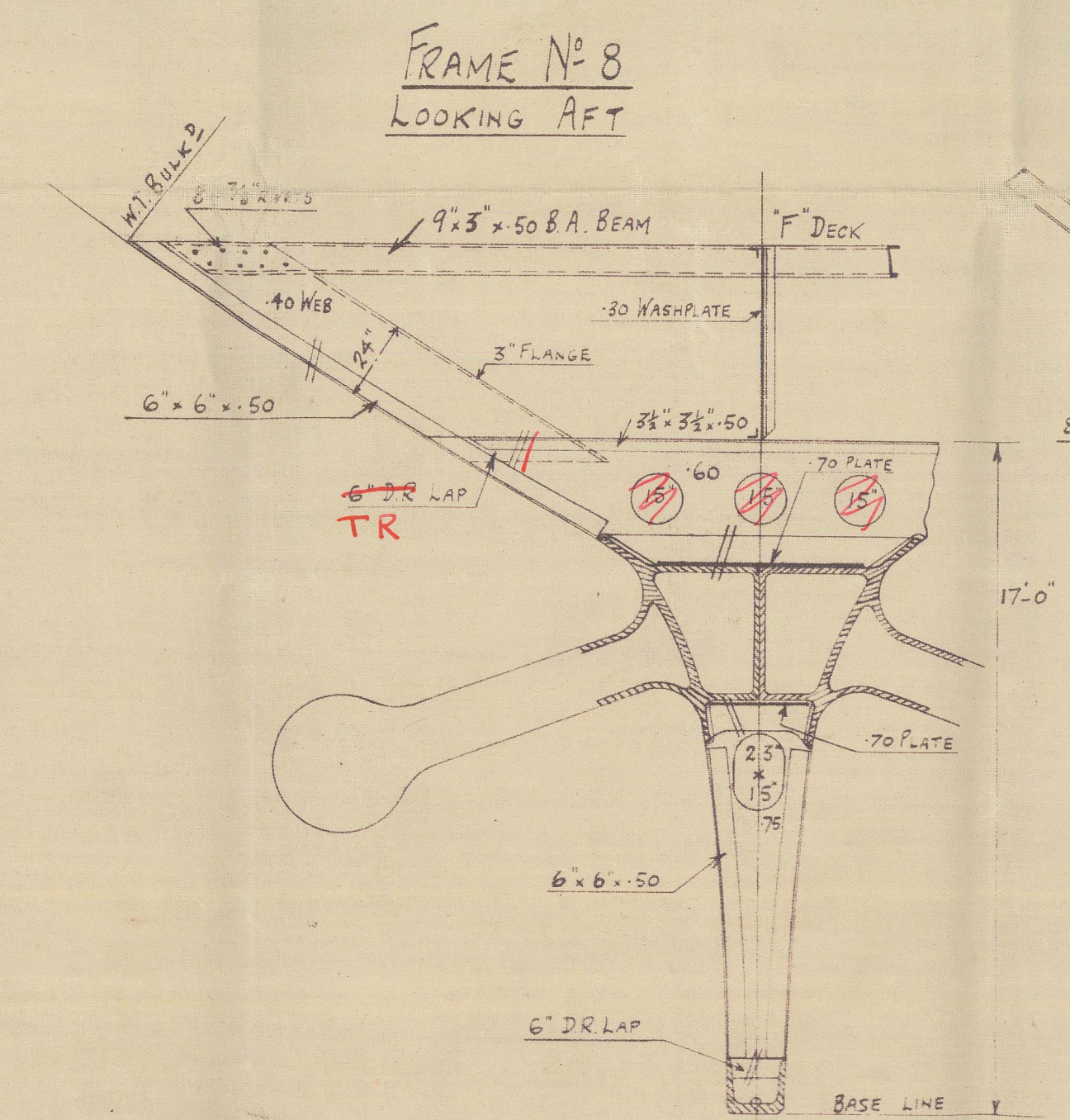
WT BULKHEAD N° 14
LOOKING FORWARD



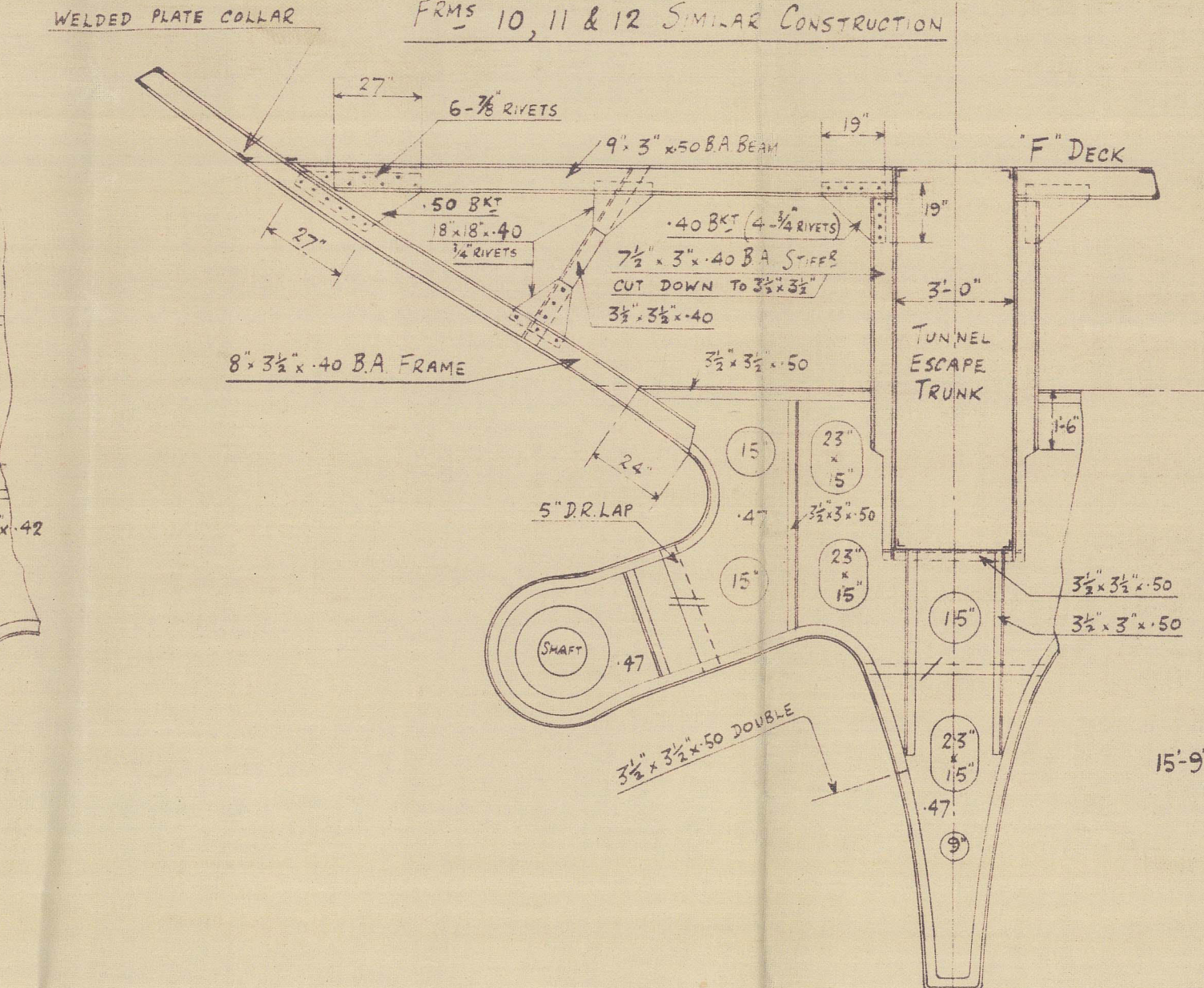
FRAME N° 6
LOOKING AFT



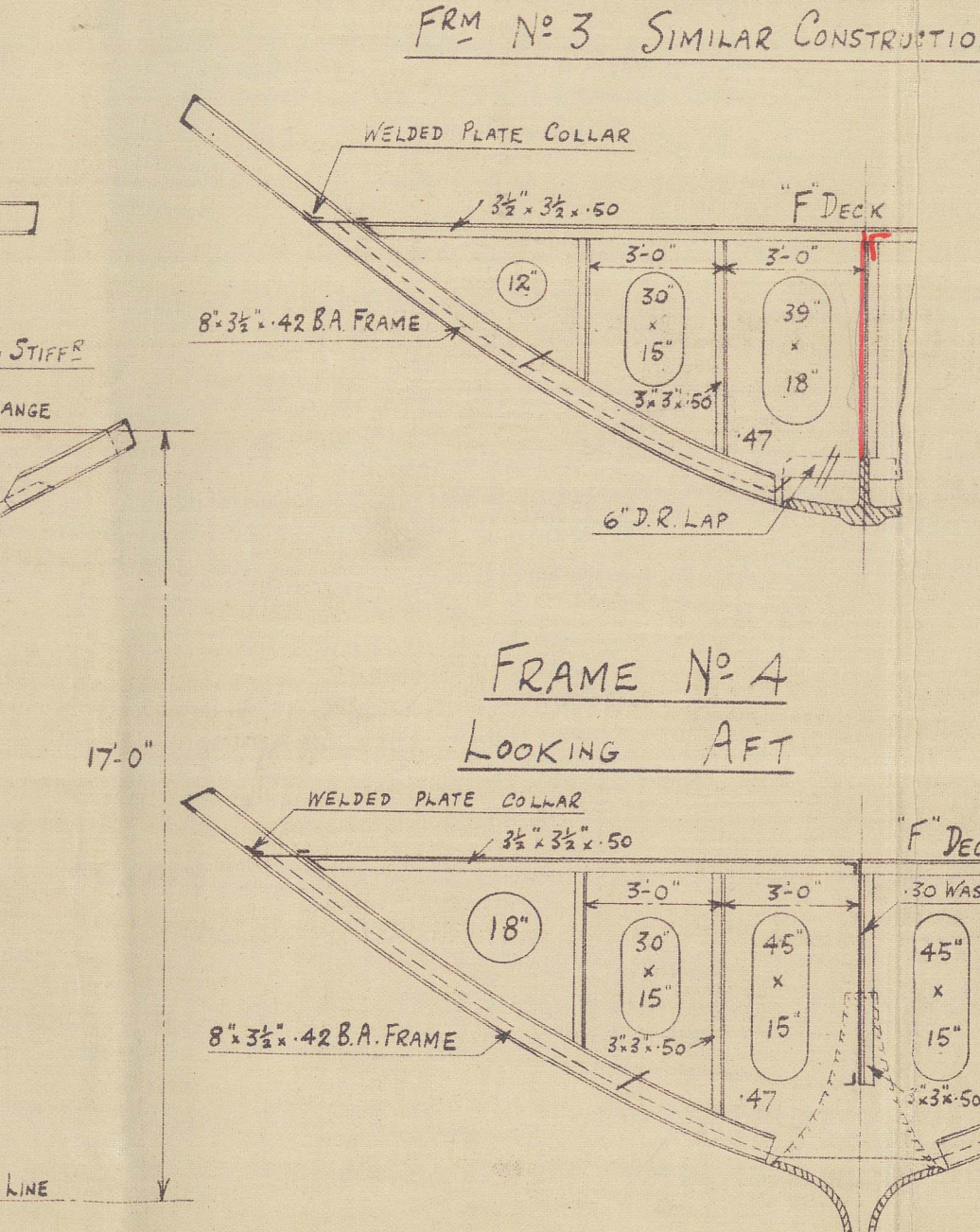
FRAME N° 8
LOOKING AFT



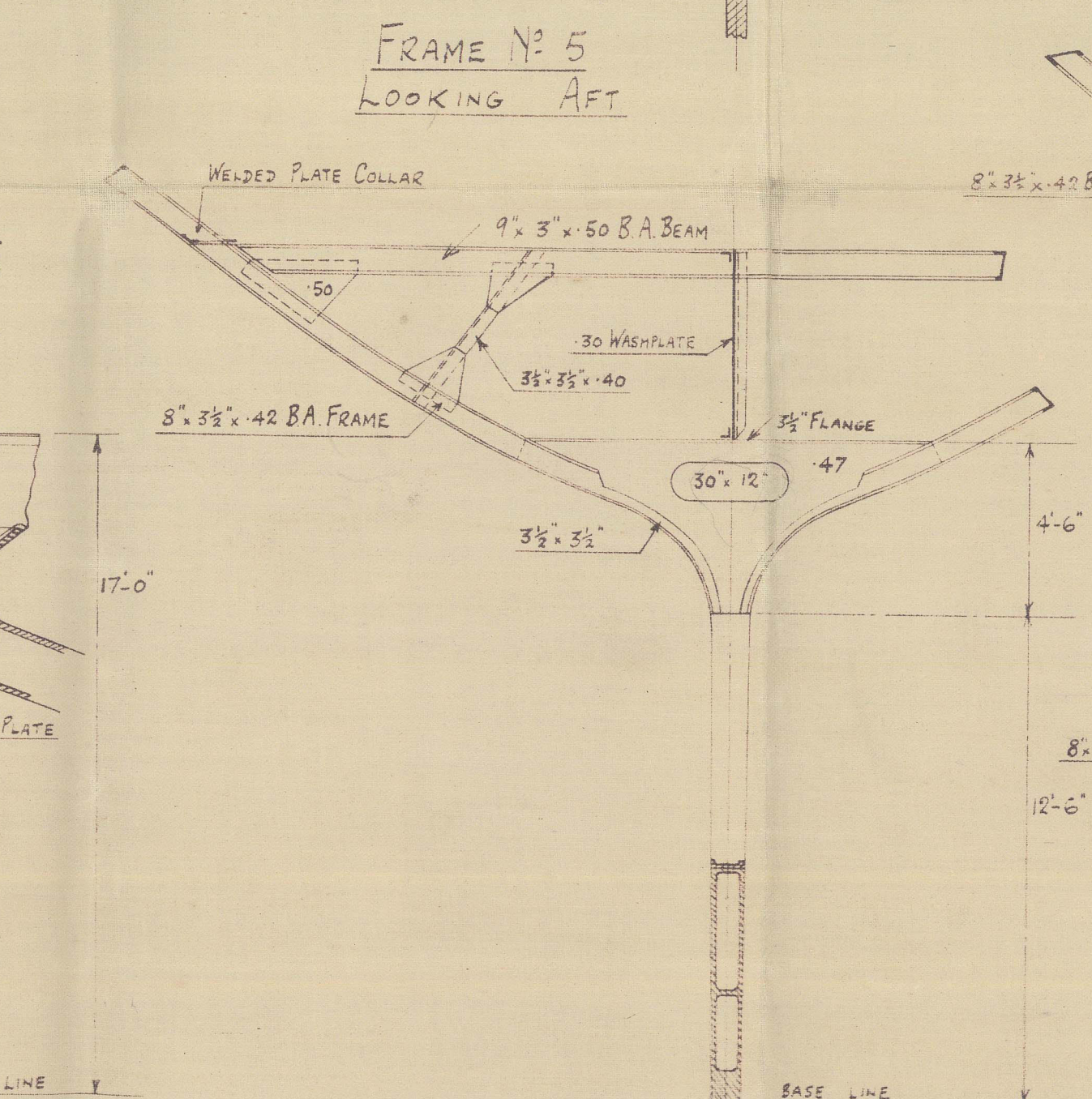
FRAME N° 13
LOOKING AFT



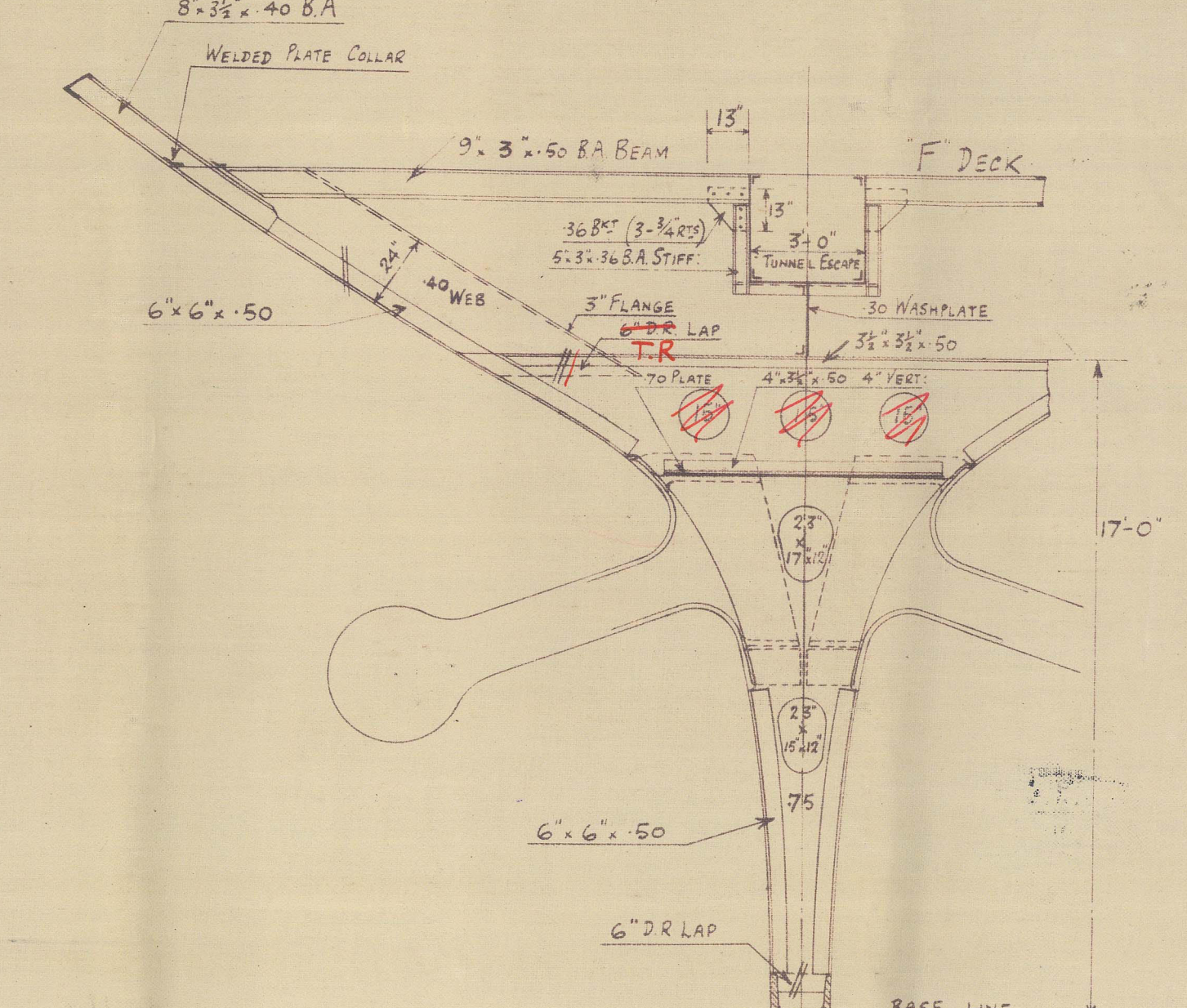
FRAME N° 2
LOOKING AFT



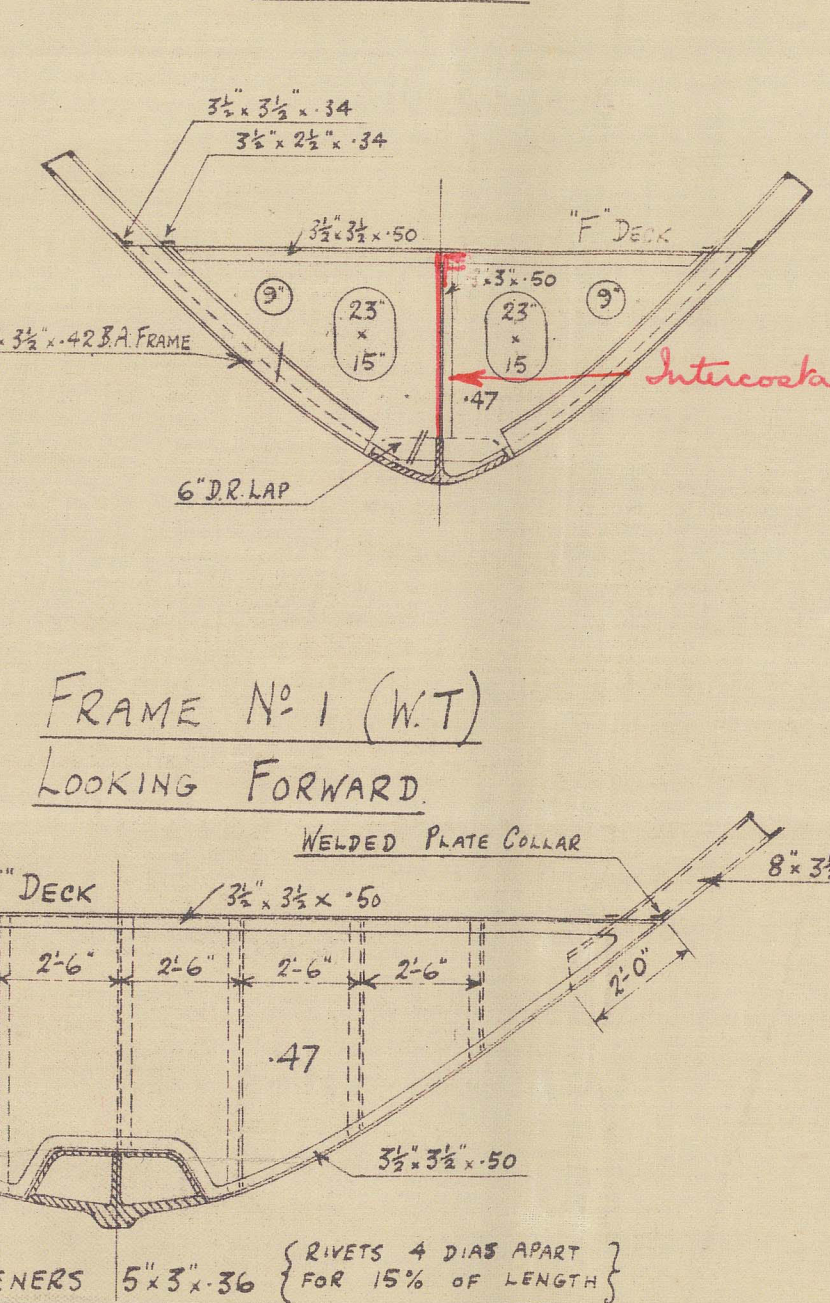
FRAME N° 5
LOOKING AFT



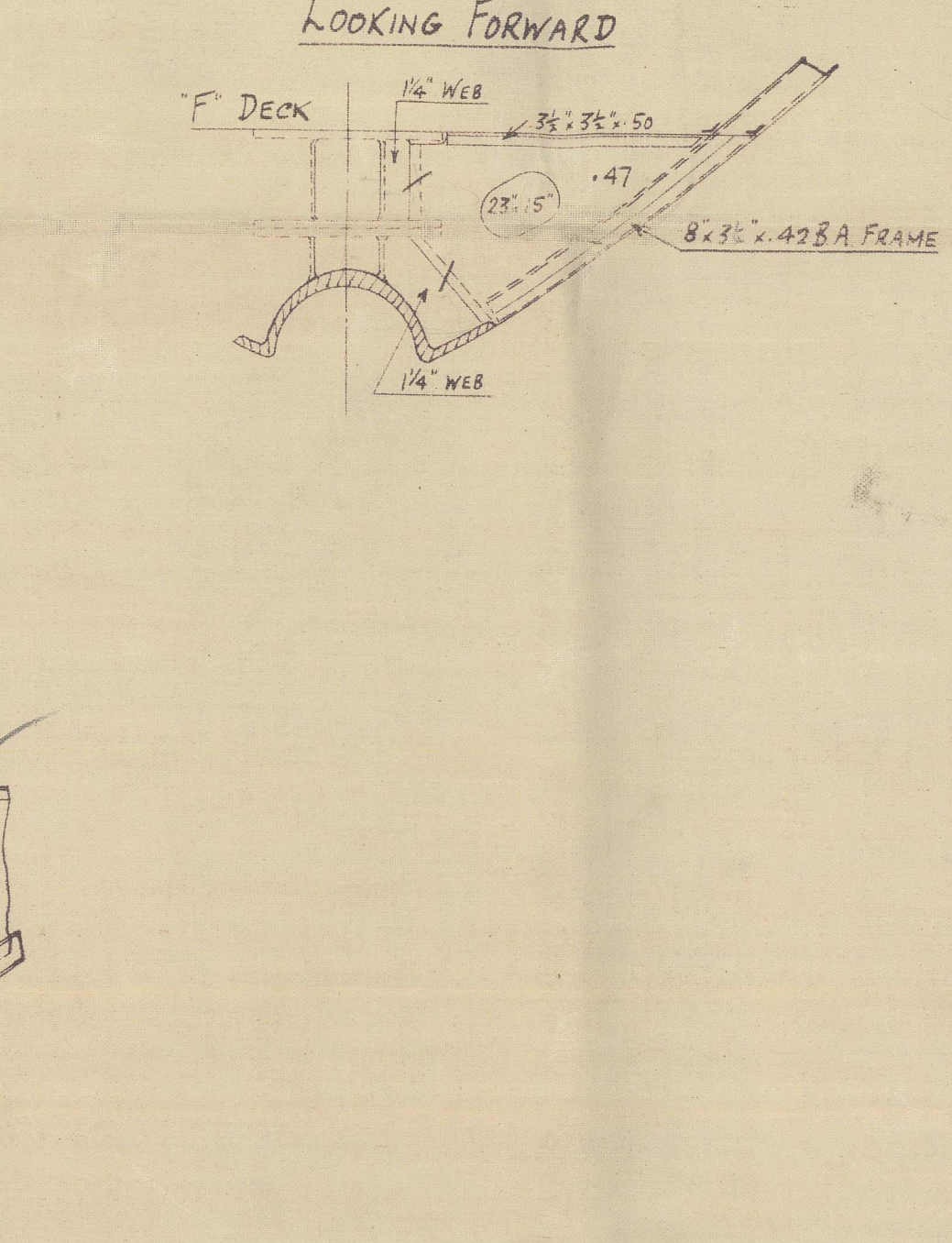
FRAME N° 9
LOOKING AFT



FRAME F
LOOKING AFT



FRAME B
LOOKING FORWARD



W.S.
19.6.30

Vickers-Armstrongs Ltd No 7 (High Walker Yard.)

Cruiser Stern & Framing in After Peak

Newcastle

Q.S.S. "MONARCH OF BERMUDA"

NEWCASTLE ON TYNE.

Report No. 87699

Vickers-Armstrongs No 681.
G.S.S. Queen of Bermuda.

Barrow Report No 2469.

BOX NO.

PLAN NO.

23

29

[Signature]



© 2021

Lloyd's Register
Foundation

011057 - 011061 - 0087

22