

24 FEB 1948

Index No. 39502  
(For London Office only).

# Lloyd's Register of Shipping.

## SURVEYS FOR FREEBOARD.

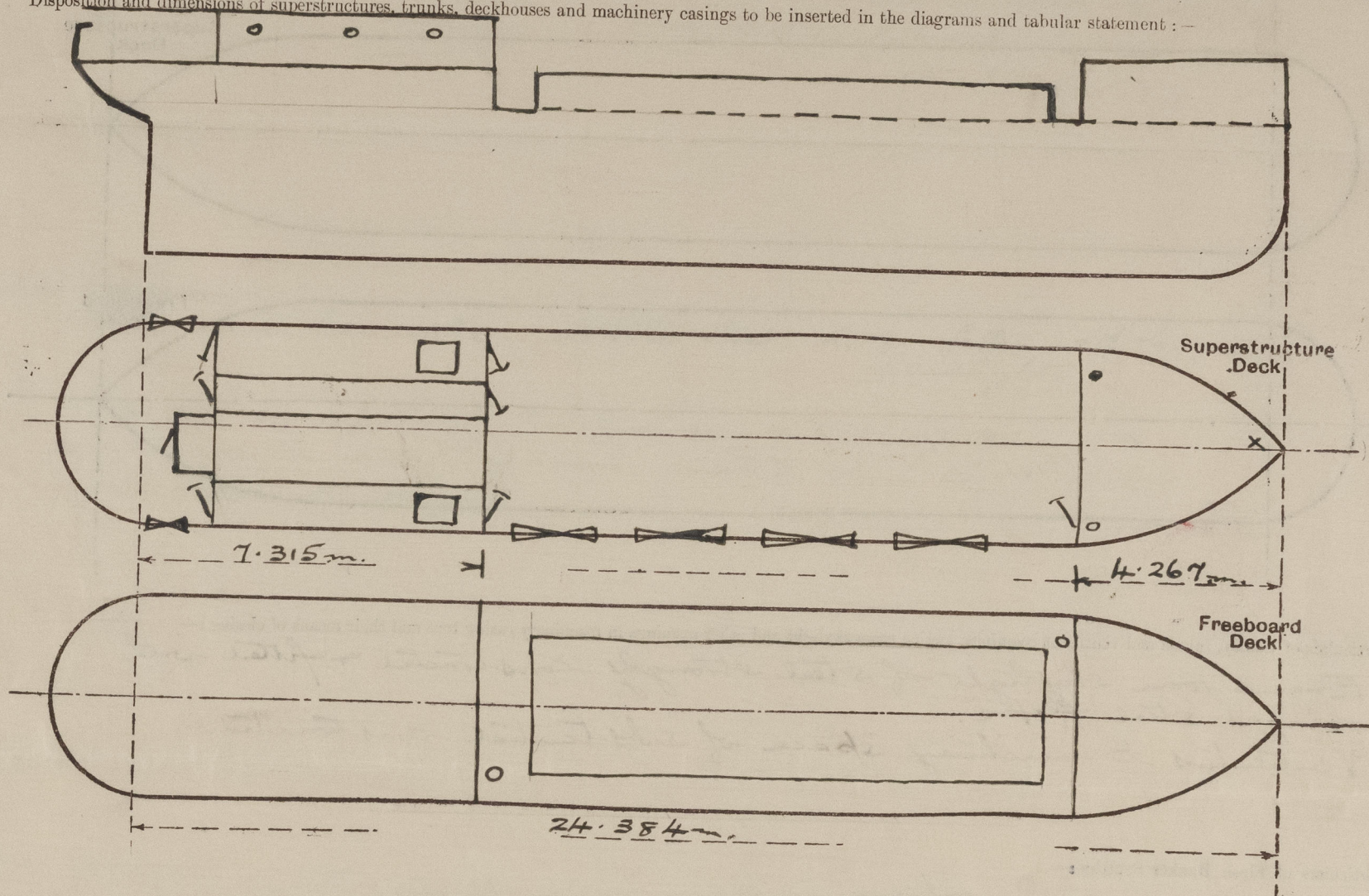
(CONDITIONS OF ASSIGNMENT.)

Ship's Name *M.Y. MOEARA*Port of Survey *Northwich (Liverpool)*

Official Number

Surveyor's Signature *Harry S. Weston*Nationality and Port of Registry *Dutch*Date of Survey *Whilst building*

Disposition and dimensions of superstructures, trunks, deckhouses and machinery casings to be inserted in the diagrams and tabular statement:—



Particulars of Superstructures, Trunks, Casings, Deckhouses.

	Coaming	Plating	Stiffeners	Spacing	End Attachments of Stiffeners	Size of Openings	Height of Sills	Height of Casings
Poop Bulkhead ...	✓							
Raised Quarter Deck Bulkhead ...	6.5	✓	102x65x7.5	724x762	13/15 at top	None	✓	914
Bridge, After Bulkhead ...								
Bridge, Forward Bulkhead ...								
Forecastle Bulkhead ...	6.5	✓	65x65x6.5	762x800	None	1.27x.53	533	2.134
Trunk, Aft ...								965
Trunk, Forward ...								steeling
Exposed Machinery Casings on Freeboard or Raised Quarter Decks ...	6	✓	65x65x6.5	724x762	13/15 @ top	6 @ 1.32x.58	533	2.057
Exposed Machinery Casings on Superstructure Decks ...						1 @ 1.372x1.29		
Machinery Casings within Superstructures not fitted with Class I Closing Appliances ...								
Deckhouses on Flush Deck Ships ...								

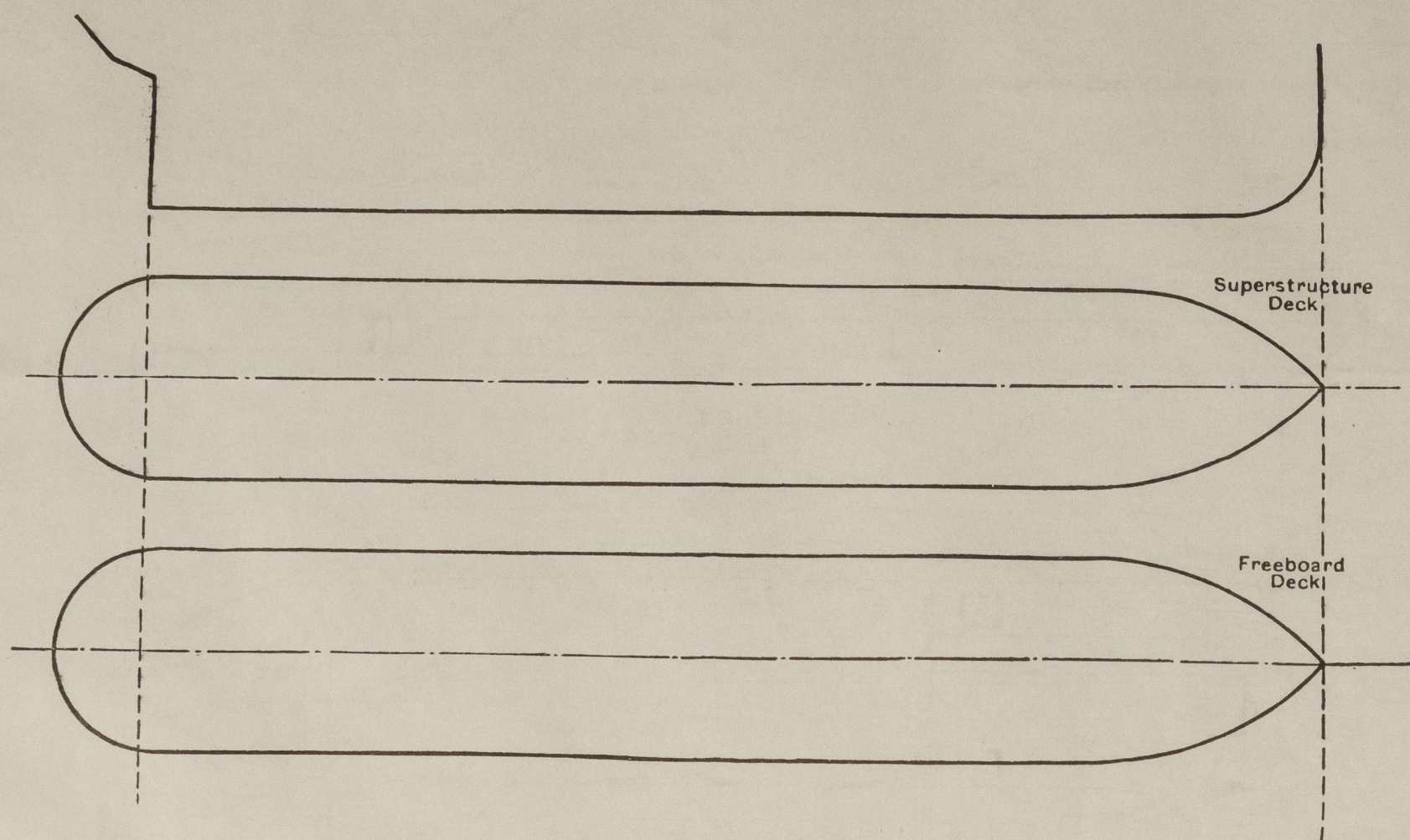
Particulars of Closing Appliances (state if capable of being manipulated from both sides).

Poop Bulkhead ...	
Raised Quarter Deck Bulkhead ...	Intact - No openings.
Bridge, After Bulkhead ...	
Bridge, Forward Bulkhead ...	
Forecastle Bulkhead ...	
Exposed Machinery Casings on Freeboard or Raised Quarter Decks ...	Hinged steel door operated both sides. ✓
Exposed Machinery Casings on Superstructure Decks ...	
Machinery Casings within Superstructures not fitted with Class I Closing Appliances ...	6 Hinged steel doors operated both sides. ✓ 1 double hinged steel door operated both sides. ✓
Deckhouses on Flush Deck Ships ...	



# PARTICULARS OF PROTECTION TO OPENINGS, ETC.

The following diagrams should be used to indicate the positions of cargo and coaling hatchways, gangway, cargo and coaling ports, ventilators, companionways, etc., which would affect the seaworthiness of the ship:—



Particulars of fiddley, funnel and ventilator coamings, engine room skylight and other openings in machinery casing tops and their means of closing:—

Engine room skylight of steel strongly constructed & fitted with hinged steel flaps.  
Ventilators to machinery space of substantial construction.

Particulars of Flush Bunker Scuttles:—

None

Particulars of Companionways:—

None

Particulars of Ventilators in exposed positions on freeboard and superstructure decks:—

Forecastle 2 @ 8" dia x 1/4" coaming. 36" high to accommodation.  
upper deck 2 @ 10" dia x 1/4" " " " " " cargo hold.

Vents to accommodation in house on Raised quarter deck are fitted in casing tops.

Vents fitted with efficient means of closing.

Particulars of Air Pipes in exposed positions on freeboard, raised quarter, or superstructure decks:—

Raised quarter deck to after peak tank Height 762 mm  
" " " " oil fuel bunkers 762 mm Height 1524 mm

Forecastle deck to fore peak tank 642 mm dia. Height 610 mm  
Protected by brass chocks.

Efficient means of closing provided for all air pipes.

Particulars of Gangway Cargo and Coaling Ports:—

None

Mocara.

Particulars of Scuppers and Sanitary Discharge Pipes:—

All sanitary discharges are from spaces above the Raised quarter deck & are fitted with non return valves at the ship's side together with hand controlled valves in accommodation.

Three open type scuppers fitted P & S in well to deck level.  
" " " " " in R. Q. D. bulwarks (small well at aft end).

Particulars of Side Scuttles:—

2 P & 2 S in fore castle 254 mm dia. G. M. fitted with hinged deadlights.

3 P & 3 S in superstructure enclosing machinery casings & accommodation on R. Q. deck. 254 mm dia. G. M. fitted with hinged deadlights.

Vertical distance of Sill of lowest Side Scuttle above top of keel

4.42 m.

Particulars of Guard Rails:—

on fore castle deck

1 Rail 1" dia. Stanchion spaces 1.372 m (approx)

Particulars of Gangways, Lifelines, etc.:—

Lifelines fitted P & S in well between fore castle & raised quarter deck bulkheads.

Particulars of Freeing Arrangements.						
	Length of Bulwark	Height of Bulwark	Size of Freeing Ports	Number each side	Area each side	Rule area each side
After Well ...	12.8 m	914 mm	1.295 m x .305 m	4	1.58 m <sup>2</sup>	1.491 m <sup>2</sup>
R. Q. Forward Well at aft end of superstructure enclosing acc.	6'-6"	914 mm	2.00 ft x 1.50 ft	1	3 ft <sup>2</sup>	
State position of each freeing port ...						
(F. and A. position and height above deck edge)						
After Well:— from R. Q. bulk 1.5m, 3.6m, 6.20m & 9.5m.						
Forward Well:— 18" from centre of rounded stern.						
State whether the freeing ports are fitted with shutters, bars, or rails, and give particulars of such:—						
3 bars.						
Additional area where sheer is less than standard.						
has been provided.						

Includes 50% excess for lack of sheer.



PARTICULARS OF PROTECTION TO OPENINGS, ETC.

HATCHWAYS ON FREEBOARD AND SUPERSTRUCTURE DECKS.									
Description of Hatchway	...	...	...	...	...	...	...	...	...
Dimensions of Hatchway	...	...	...	...	...	...	...	...	...
COAMINGS	Height above Deck	...	...	...	...	...	...	...	...
	Thickness	...	...	...	...	...	...	...	...
	Stiffeners	...	...	...	...	...	...	...	...
	Brackets, Stays	...	...	...	...	...	...	...	...
HATCH BEAMS	Number	...	...	...	...	...	...	...	...
	Spacing	...	...	...	...	...	...	...	...
	Scantling and Sketch	...	...	...	...	...	...	...	...
	Bearing Surface	...	...	...	...	...	...	...	...
FORE AND AFTERS	Number	...	...	...	...	...	...	...	...
	Spacing	...	...	...	...	...	...	...	...
	Unsupported Lengths	...	...	...	...	...	...	...	...
	Scantling* and Sketch	...	...	...	...	...	...	...	...
HATCH COVERS	Material	...	...	...	...	...	...	...	...
	Thickness	...	...	...	...	...	...	...	...
	How fitted	...	...	...	...	...	...	...	...
	Bearing Surface	...	...	...	...	...	...	...	...
Spacing of Cleats	...	...	...	...	...	...	...	...	...
Number of Tarpaulins	...	...	...	...	...	...	...	...	...
<p>*Are wood fore and afters steel shod at all bearing surfaces? <span style="float: right;">Yes</span></p> <p>Are battens and wedges efficient and in good condition? <span style="float: right;">Yes</span></p> <p>Are tarpaulins in good condition and in accordance with rule requirements? <span style="float: right;">Yes. Extra lashings provided in accordance with requirements for ships with hatchways exceeding in breadth 60% that of the ship.</span></p> <p>Are lashings provided in accordance with rule requirements? <span style="float: right;">Yes</span></p>									

Particulars of any special features:—

Endorsement at first survey and at surveys for renewal of Certificate:—

The fittings and appliances are in accordance with the particulars shown on this form (or as now modified) and are in good condition.



© 2021

Lloyd's Register Foundation