

Received by Chief Ship Surveyor

Received from Chief Ship Surveyor

VESSEL'S NAME Single Screw M.V. "COXWOLD" Rpt. Hul. No. 48713**The remarks of the Chief Ship Surveyor are desired on this case for the consideration of the Classing Committee.**

("The endorsement to contain a succinct summary of any repairs that have been required and to show the cause or causes of such repairs, and also to bring out clearly any exceptional features in connection with the case, so that the Classing Committee may have all the salient points presented in the endorsement."—*Extract from Sub-Committee's Report, 24/5/32*)

| | | | |
|--|-------|-----------------------------------|---------------------------------------|
| 1st Long. No. | 3200 | Depth "d" | 12.5' to Upper Dk. 17.0' to Q. Dk. |
| 2nd Long. No. | 10080 | Proportions = $\frac{L}{D}$ | 13.75 to Upper dk. 10.65 to Q.Dk. |
| Framing Bulb angle frames as approved (plus increase) | | Sheerstrake | As approved |

This vessel appears to have been built in accordance with the Rules and the approved plans, and it is submitted she is eligible to be classed

100A1

1 Dk.

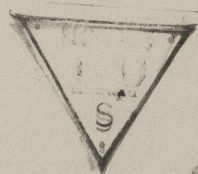
Cell.DB 141' 280t, FPT 117t, APT 11t.

FK, 3BH., cam., Lloyd's A & CP.

Q 158', F 19'.

Machy. aft

O.L.224.2'.



[Signature]
22.3.28

[Signature]

The Certificate of Classification is
re endorsed "Cargo battens not
fitted" and the same notation to be
entered in the Register Book



© 2020

Lloyd's Register
Foundation