

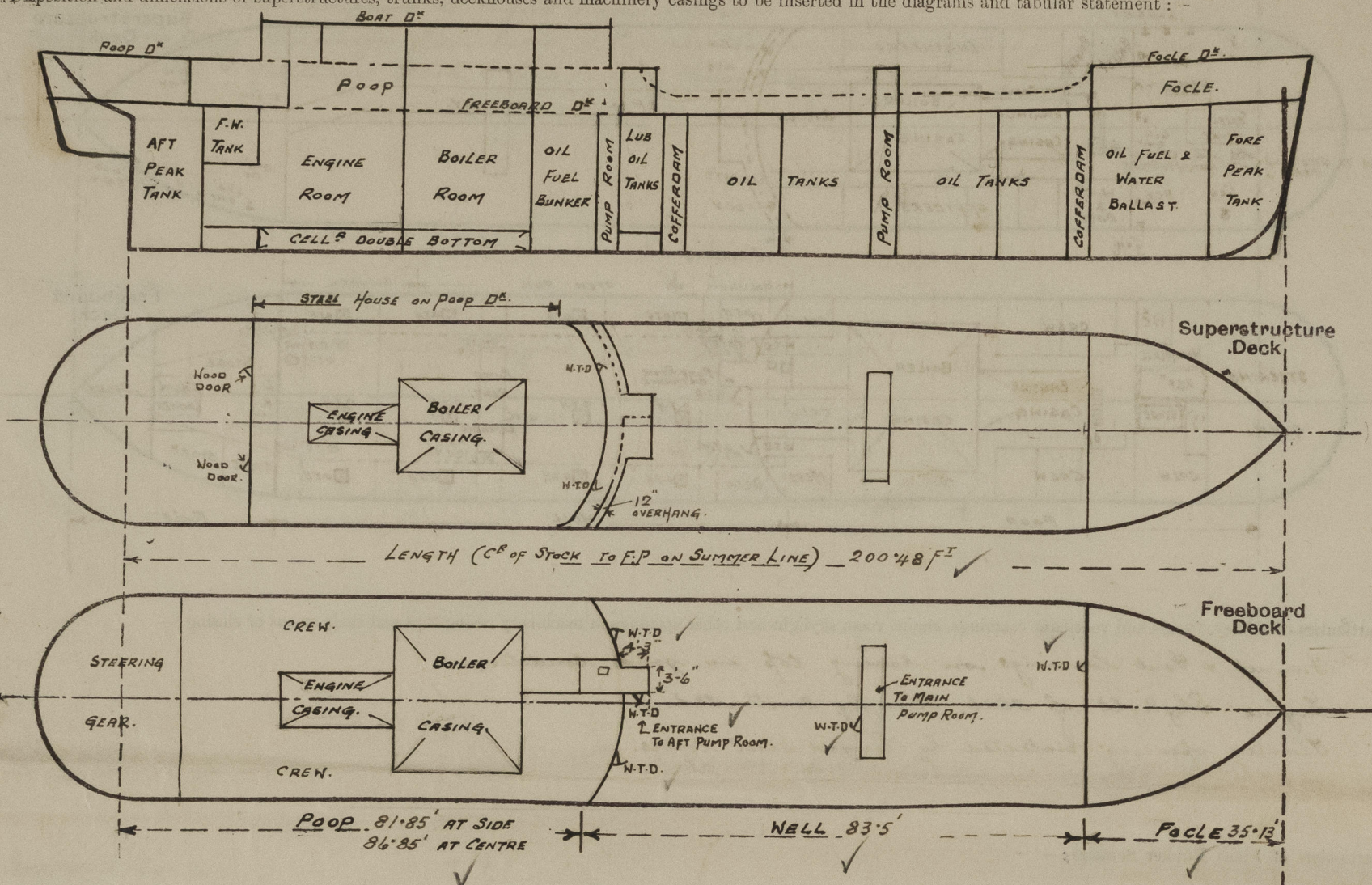
## Lloyd's Register of Shipping.

Index No.  
(For London Office only).SURVEYS FOR FREEBOARD.  
(CONDITIONS OF ASSIGNMENT.)

DEC -9 1940

Ship's Name *"NASPRITE"*Port of Survey *Glasgow.*Official Number *168062*Surveyor's Signature *R. Dundas*Nationality and Port of Registry *BRITISH LONDON.*Date of Survey *while building*

Disposition and dimensions of superstructures, trunks, deckhouses and machinery casings to be inserted in the diagrams and tabular statement: -



Particulars of Superstructures, Trunks, Casings, Deckhouses.

	Coaming	Plating	Stiffeners	Spacing	End Attachments of Stiffeners	Size of Openings	Height of Sills	Height of Casings
Poop Bulkhead ...	44 x 36	32	BA 6" x 3 1/2 x 7/16	27" & 28 1/2"	LUGGED TOP WELDED BOTTOM	1 (P&S) 4'-6" x 2'-6"	18"	8'-0"
<del>Raised Quarter Deck Bulkhead</del> ...								
<del>Bridge, After Bulkhead</del> ...								
<del>Bridge, Forward Bulkhead</del> ...								
Forecastle Bulkhead ...	25 PLATING		ANGLE 3 x 2 1/2 x 5/16	23" & 27"	NONE	1 (PORT) 3'-5"-0" x 2'-0"	18"	8'-0"
<del>Trunk, Aft</del> ...								
<del>Trunk, Forward</del> ...								
<del>Exposed Machinery Casings on Freeboard or Raised Quarter Decks</del> ...								
<del>Exposed Machinery Casings on Superstructure Decks</del> ...								
<del>Machinery Casings within Superstructures not fitted with Class I Closing Appliances</del> ...								
<del>Deckhouses on Flush Deck Ships</del> ...								

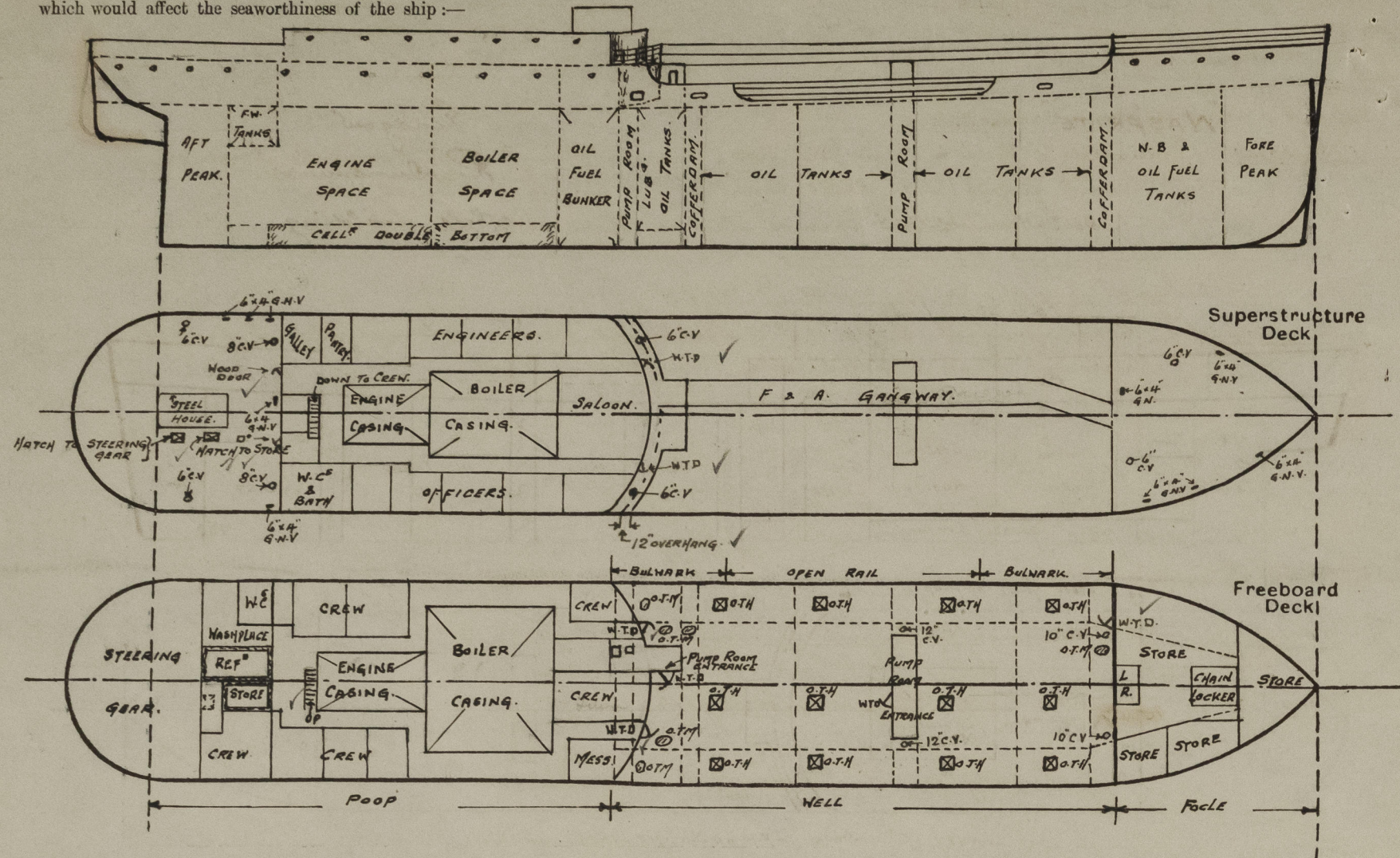
Particulars of Closing Appliances (state if capable of being manipulated from both sides).

Poop Bulkhead ...	Hinged Steel W.T. Doors. Operated from both sides. ✓
<del>Raised Quarter Deck Bulkhead</del> ...	
<del>Bridge, After Bulkhead</del> ...	
<del>Bridge, Forward Bulkhead</del> ...	
Forecastle Bulkhead ...	Hinged Steel W.T. Door. Operated from both sides. ✓
<del>Exposed Machinery Casings on Freeboard or Raised Quarter Decks</del> ...	
<del>Exposed Machinery Casings on Superstructure Decks</del> ...	
<del>Machinery Casings within Superstructures not fitted with Class I Closing Appliances</del> ...	
<del>Deckhouses on Flush Deck Ships</del> ...	



# PARTICULARS OF PROTECTION TO OPENINGS, ETC.

The following diagrams should be used to indicate the positions of cargo and coaling hatchways, gangway, cargo and coaling ports, ventilators, companionways, etc., which would affect the seaworthiness of the ship:—



Particulars of fiddle, funnel and ventilator coamings, engine room skylight and other openings in machinery casing tops and their means of closing:—

- Funnel & Vent. Coamings on casing top in good condition. ✓
- Engine Skylight of Steel, strongly constructed. ✓
- Fiddle opening protected by linged steel covers. ✓

Particulars of Flush Bunker Scuttles:—

None. ✓

Particulars of Companionways:—

- Pump Room Entrance at Poop Bay: Plating front & sides 3/16", Stiffeners 6" x 3/4" S.A. @ 21" x 27", Hinged Steel W.T. Door (S. Side) 4'-6" x 2'-6", Door operated from both sides. Sill 18". ✓
- Pump Room Entrance 1st Well: Steel casing 8'-0" high, Plating 3/16" thick sides 3/16", End 3/16", Stiffeners 6" x 3/4" S.A. @ 21" x 27", Hinged Steel W.T. Door 4'-6" x 2'-6", Door operated from both sides. Sill 18". ✓
- Entrances to Crews Quarters from Steel House on Poop Deck: Deck house front 1/2" x 26" plating, Stiffers 3" x 3/4" S.A. @ 31", Hinged Steel W.T. Door 4'-6" x 2'-6", operated from both sides. 16" Sill. ✓

Particulars of Ventilators in exposed positions on freeboard and superstructure decks:—

- FOCLE DECK: 2-6" C.V. (P&S) Coamings 36" x 30" to Focle. ✓  
5-6" x 4" 9" N.V. to Store Spaces in Focle. (CAST IRON) 18" High. ✓
- WELL DECK: 1-10" C.V. (P&S) Coamings 8'-0" x 32" to forward pump room & boiler room. Coamings stayed from Focle Bulkhead. ✓  
1-12" C.V. (P&S) Coamings 36" x 34" to main pump room. ✓
- POOP DECK: 1-6" C.V. (P&S) Coamings 30" x 30" to aft pump room. ✓  
1-8" C.V. (P&S) Coaming 8'-0" x 30" to Poop Space. Coaming stayed from deckhouse end bulkhead. ✓  
1-6" C.V. (P&S) Coaming 30" x 30" to Steering Gear Space. ✓  
5-6" x 4" 9" N.V. to N.C. & Washplaces in Poop. (CAST IRON) 18" High. ✓
- Coal Vent Coamings fitted with wood plugs & canvas covers. ✓  
Sore Reck Vents fitted only with canvas covers. ✓

Particulars of Air Pipes in exposed positions on freeboard, raised quarter, or superstructure decks:—

- FOCLE DECK: 1-4" M1 to Fore Peak, 1-2" M1 to Oil fuel deep tank. Air pipes 18" High. ✓
- WELL DECK: 1-6" M1 (P&S) to Water Ballast Tanks. Air pipes 4'-0" High, & clipped to Focle 8'-0". ✓
- POOP DECK: 3-3" M1 to Oil fuel Bunker & Settling Tanks. Air pipes 18" High. ✓  
1-2" M1 (P&S) to Fresh Water Tanks, 1-3" M1 (P&S) to aft Peak Tank. Air pipes 18" High. ✓
- BOAT DECK: 1-3" M1 (P&S) to Oil fuel double bottom, 1-2" M1 (P&S) to boiler room in double bottom. Air pipes 18" High. ✓  
1-2" M1 (P&S) to Feed Water Tank in double bottom. Air pipes 12" High. ✓

Air pipes to Oil fuel bunkers & double bottoms fitted with gauge. Remainder fitted with canvas covers. ✓

Particulars of Gangway Cargo and Coaling Ports:—

None. ✓

Particulars of Scuppers and Sanitary Discharge Pipes:—

- POOP SPACE: Discharge from N.C. on Port Side, carried through ship's side below freeboard deck fitted with brass storm valve & having a valve at N.C. ✓  
Washbasin discharges carried through ship's side above freeboard deck & fitted with brass storm valve. ✓  
All Scuppers to Engine Room Bilge. ✓
- HOUSE ON POOP DECK: Discharges from Baths, N.C. & Washbasins carried through ship's side above freeboard deck & fitted with brass storm valves. ✓

Particulars of Side Scuttles:—

- FOCLE 9 1/2" Dia. with linged deadlights & plugs. ✓
- POOP 9 1/2" Dia. with linged deadlights & plugs. ✓
- All sidelights of substantial construction. ✓

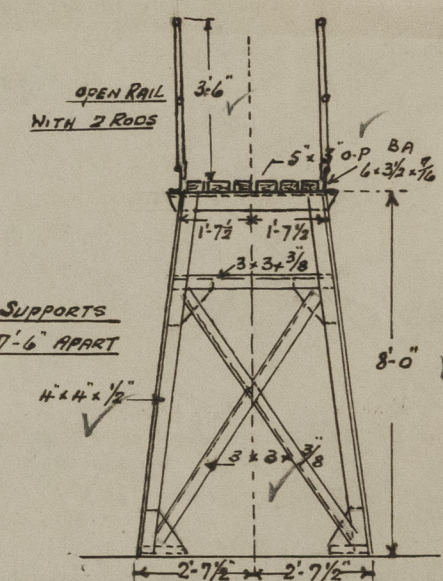
Vertical distance of Sill of lowest Side Scuttle above top of keel No sidelights below freeboard deck. ✓

Particulars of Guard Rails:—

- FOCLE D<sup>5</sup>: Open rails 3'-6" high with 3 rods & stanchions about 4'-6" apart. ✓
- UPPER D<sup>5</sup>: Open rails 3'-6" high with 3 rods & stanchions about 4'-6" apart between bulwark at Poop front & Focle end. ✓
- POOP D<sup>5</sup>: Open rails 3'-6" high with 3 rods & stanchions about 4'-6" apart at fore end of Poop Deckhouse & from after end of Deckhouse round stern. ✓

Particulars of Gangways, Lifelines, etc.:—

Gangway as per sketch fitted from Poop to Focle. ✓



## Particulars of Freeing Arrangements.

	Length of Bulwark	Height of Bulwark	Size of Freeing Ports	Number each side	Area each side	Rule area each side
After Well ...						
Forward Well	POOP FRONT 19'-3" FOCLE END 24'-0"	3'-6"	1 @ 2'-0" x 1'-6" & 1 @ 2'-6" x 9" 1 @ 2'-6" x 9"	2 1	4.75 1.75	OPEN RAIL 4'-0" O.F.I.

State position of each freeing port ... After Well:—

(F. and A. position and height above deck edge) Forward Well:— FROM POOP FRONT 1'-0" & 11'-3" } 9" ABOVE D<sup>5</sup>. ✓  
FROM FOCLE END 13'-0"

State whether the freeing ports are fitted with shutters, bars, or rails, and give particulars of such:— BAR FITTED IN FREEING PORT AT POOP FRONT ✓

Additional area where sheer is less than standard. ✓



PARTICULARS OF PROTECTION TO OPENINGS, ETC.

HATCHWAYS ON FREEBOARD AND SUPERSTRUCTURE DECKS.									
Description of Hatchway			OIL TIGHT HATCHES IN WELL	OIL TIGHT MANHOLES IN WELL	HATCH ON POOP DECK AFT TO REFRIG. STORE	HATCH ON POOP DECK AFT STEERING GEAR.			
Dimensions of Hatchway			12 IN N° 2'-6" x 2'-6"	5 IN N° 23" x 15"	3'-3" x 2'-6"	3'-6" x 2'-6"			
COAMINGS	{	Height above Deck	30"	COAMINGS	18"	18"			
		Thickness { Sides	40	12" x 40	36	36			
		Ends	40		✓	✓			
		Stiffeners	✓	✓	✓	✓			
		Brackets, Stays	✓	✓	✓	✓			
HATCH BEAMS	{	Number							
		Spacing							
FORE AND AFTERS	{	Scantling and Sketch							
		Bearing Surface							
HATCH COVERS	{	Material	HINGED STEEL	HINGED STEEL	WOOD	WOOD			
		Thickness	COVER 50	COVER 3/8	2 1/2"	2 1/2"			
		How fitted	SECURED WITH TOGGLES	SECURED WITH TOGGLES	F & A	F & A			
		Bearing Surface	SPACED 13"	SPACED 13"	2 1/2"	2 1/2"			
Spacing of Cleats			✓	✓	24"	24"			
Number of Tarpaulins			✓	✓	2	2			
<p>*Are wood fore and afters steel shod at all bearing surfaces? ✓</p> <p>Are battens and wedges efficient and in good condition? YES. ✓</p> <p>Are tarpaulins in good condition and in accordance with rule requirements? YES. ✓</p> <p>Are lashings provided in accordance with rule requirements? YES. ✓</p>									

Particulars of any special features :—

Endorsement at first survey and at surveys for renewal of Certificate :—

The fittings and appliances are in accordance with the particulars shown on this form (or as now modified) and are in good condition.

