

Kinnaird Head & Westside
Mrs. 288 & 9.

No 2881289

STEEL SCREW STEAMER

LENGTH B.P. 143'-0", BREADTH M^{LD} 24'-0", DEPTH M^{LD} 12'-0"

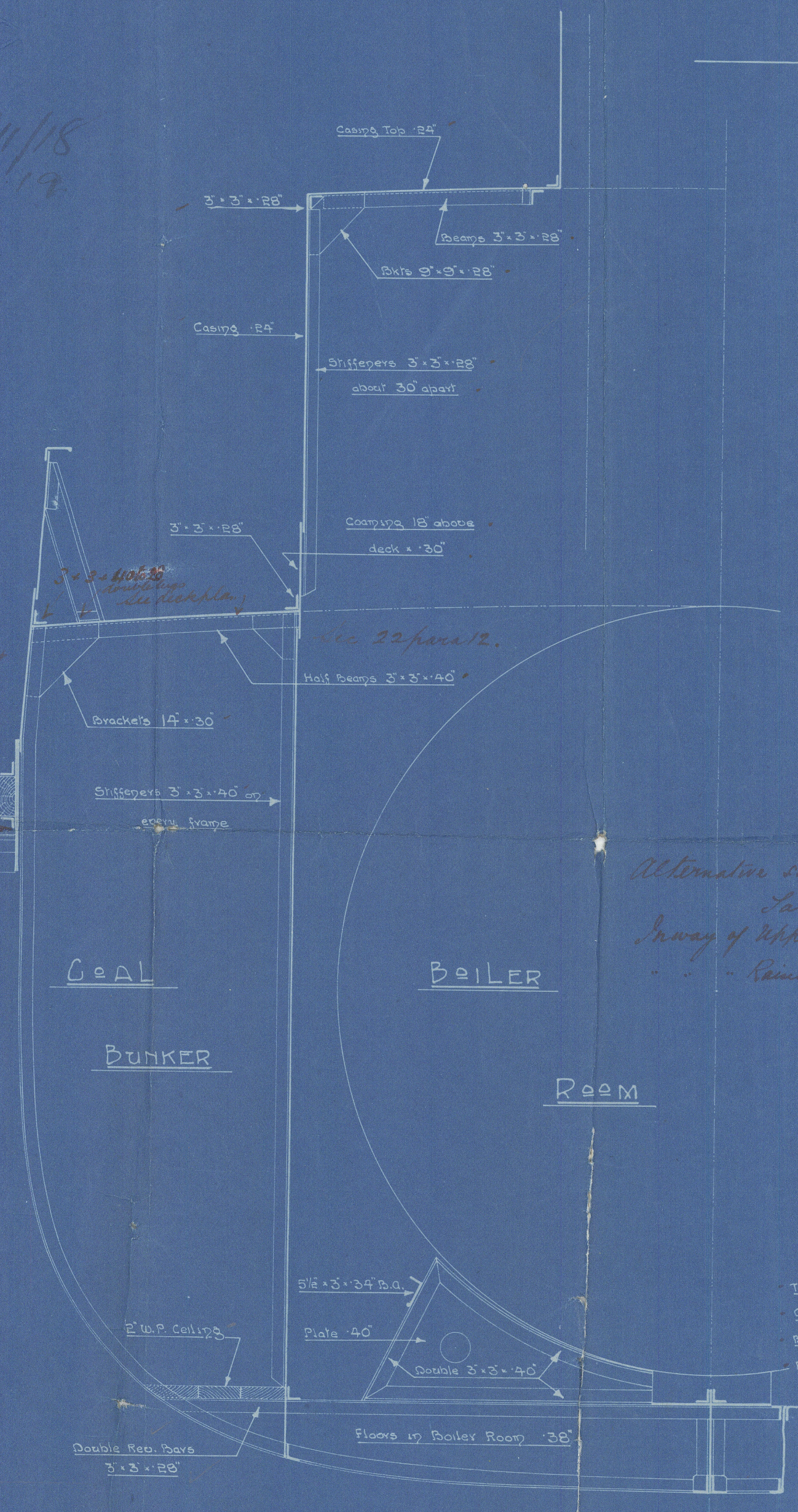
MIDSHIP SECTION

SCALE 1/2" = 1 FOOT

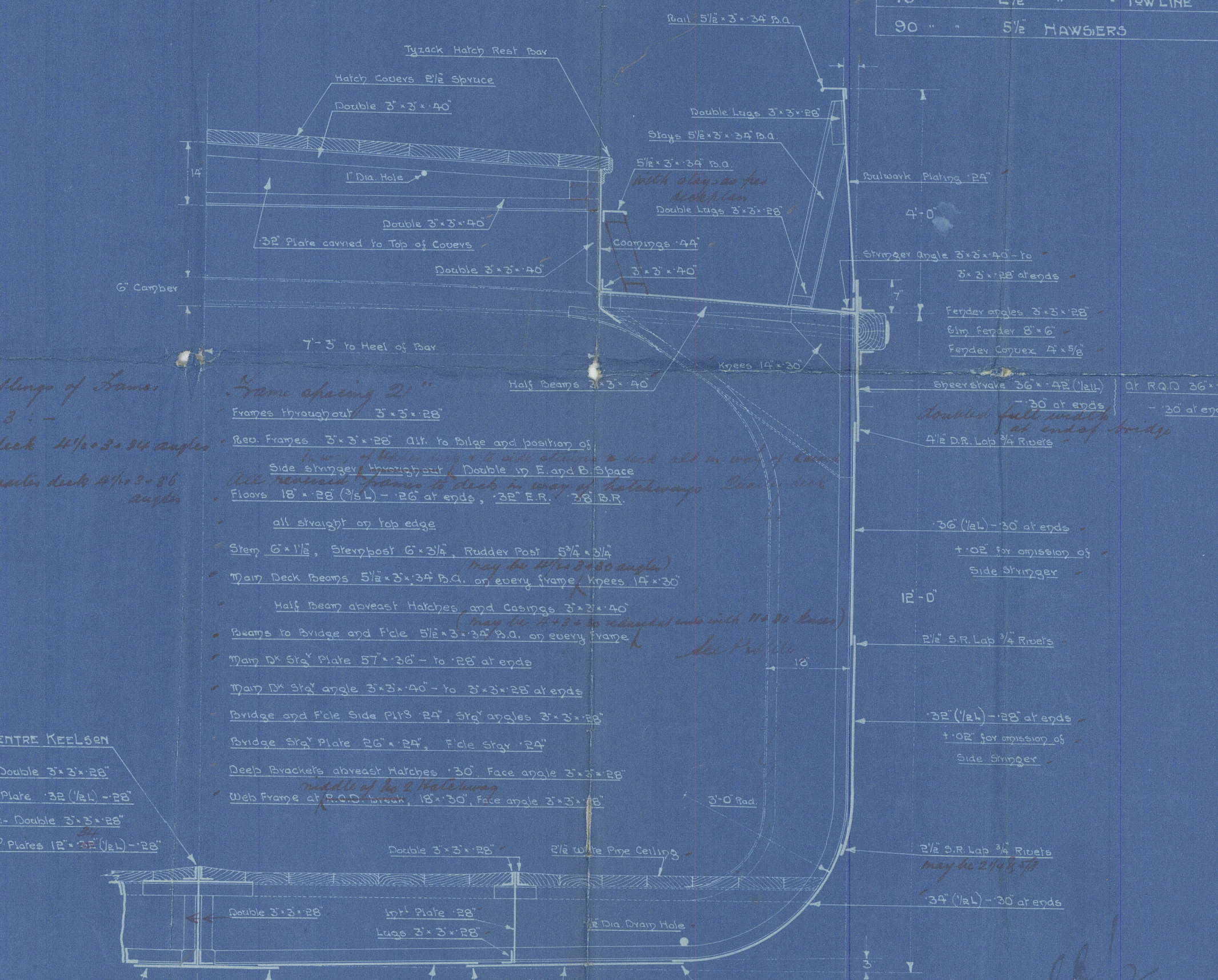
LLOYD'S NUMERALS	
B + D	36
L x (B + D)	5148
d to MAIN DECK	10'-6"
R.Q.D.	13'-0"
1/6	11-9

EQUIPMENT NUMBER	
L x (B + D)	5148
FILE 3/4 x 23.5 x 6.75	119
BRIDGE 3/4 x 8.75 x 7.00	46
R.Q.D. 86.25 x 2.5	216
CASINGS 1/2 x 42 x 7.00	147
	5676

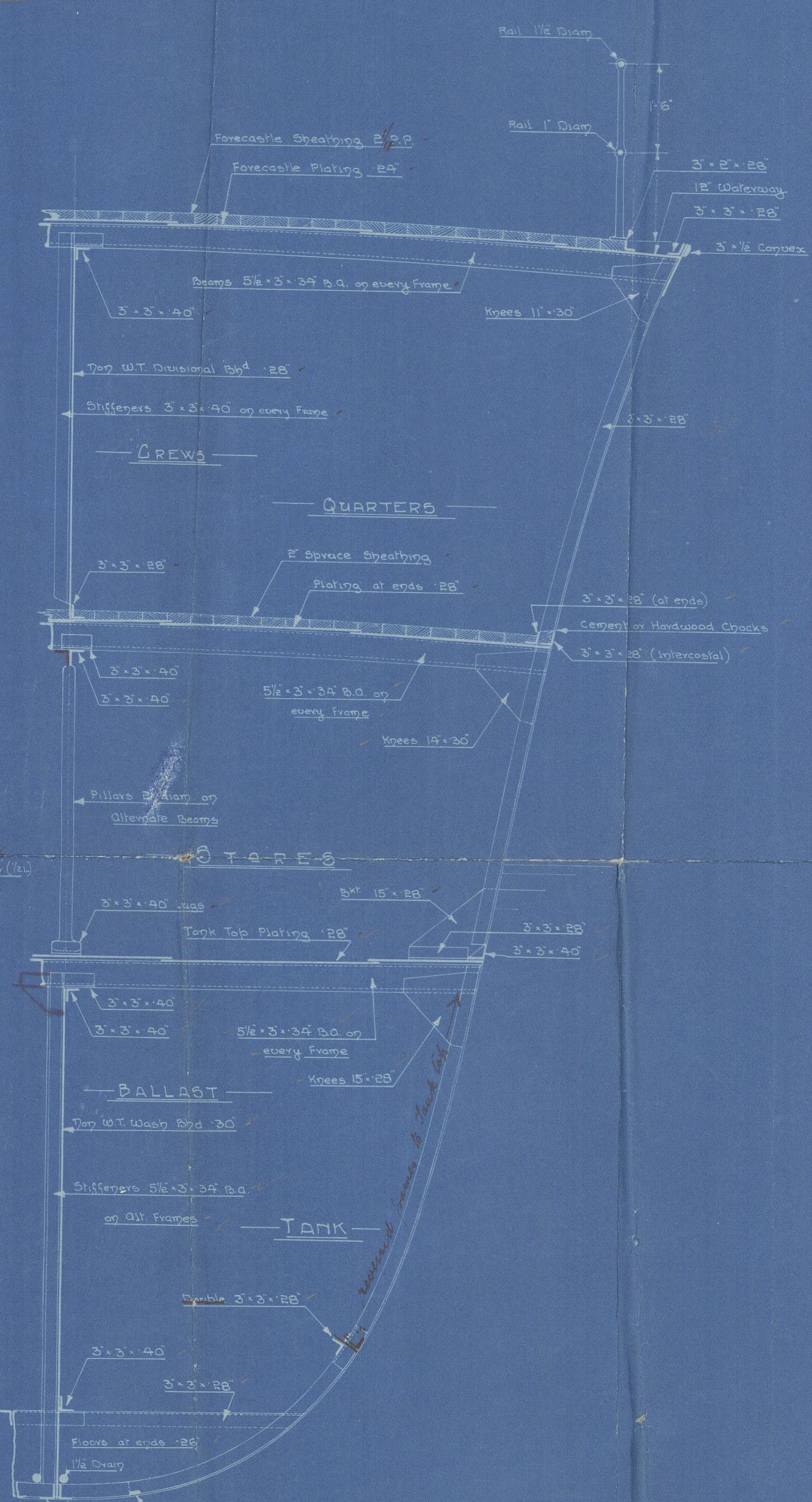
EQUIPMENT	
2 POWERS EACH	9 CWTs STECKLEGG
1 STREAM	3 - EX STOCK
1 KEDGE	1/4 - "
165 FATHOMS	1" STUB CHAIN CABLE
45	2 3/4" STEEL WIRE
75	2 1/2" TOW LINE
90	5/8" HAWSERS



SECTION AT FRAME 24
Looking Aft



MIDSHIP SECTION



SECTION AT FRAME 71
Looking Forward



288/9
Crickton No

Coasters Nos 288 & 289

Midship Section

S. S. *"Wearside"*

LIVERPOOL.

Report No. *81767*

S. S. *"Kinnaird Head"*

LIVERPOOL.

Report No. *82024*

3 Moorlands *



© 2021

Lloyd's Register
Foundation

011197-011206-0114