

BLYTH DRY DOCKS & SHIPBUILDING CO LTD-BLYTH.
PROPOSED M.S. FABRICATED RUDDER.
SHIPS NOS 342 & 343.

PARTICULARS:-

450'-0" B.P. x 62'-8" x 34'-6" MLD.
 1ST LONGITUDINAL NO (LxD) = 450 x 34.5 = 15,525.
 SPEED = 13 1/2 KNOTS. CLASS LLOYDS 100A1 - CARRYING PETROLEUM IN BULK
 WITH LONGITUDINAL FRAMING AT BOTTOM & DECK.

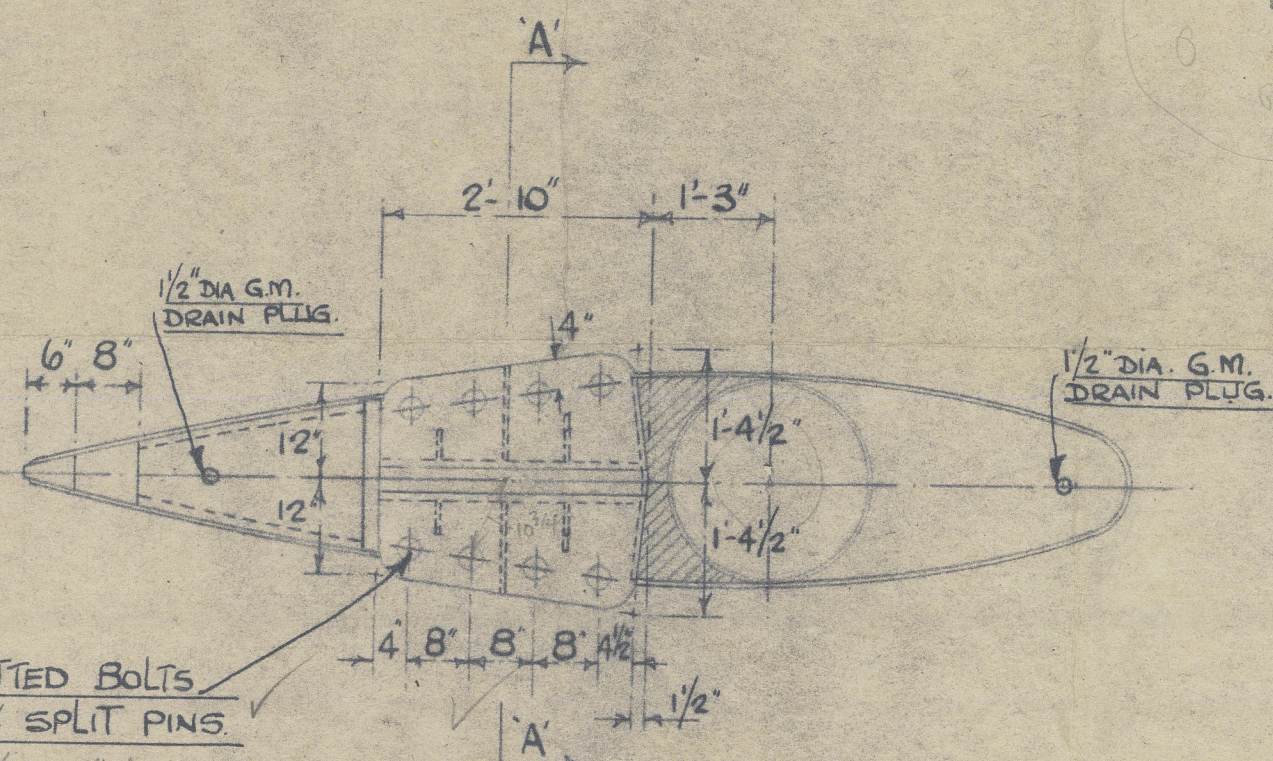
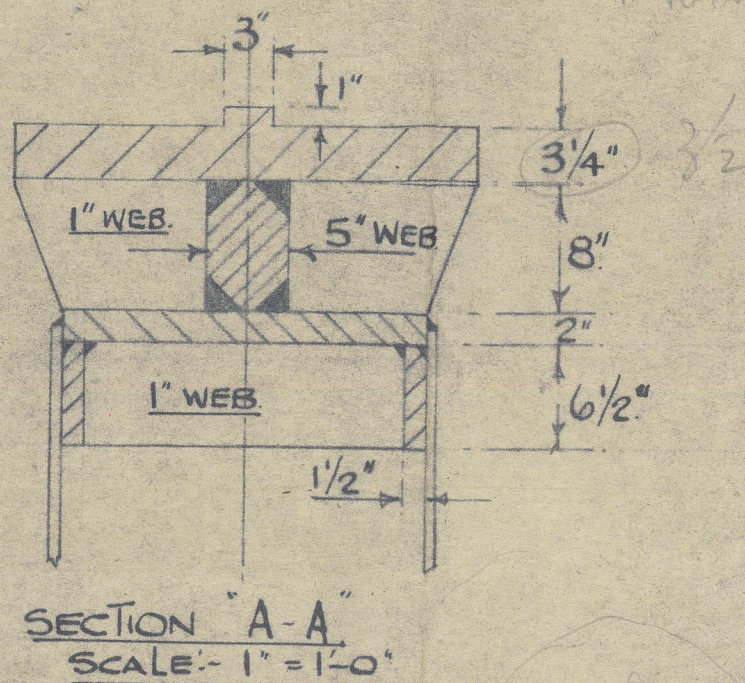
M.S. FABRICATED RUDDER OF SIMPLEX TYPE.

$$A \times D = \frac{170 \times 7.75}{3.875} = 510 = A \times D \text{ for } \frac{1}{2} \text{ inch (max. allowance of } 20\%)$$

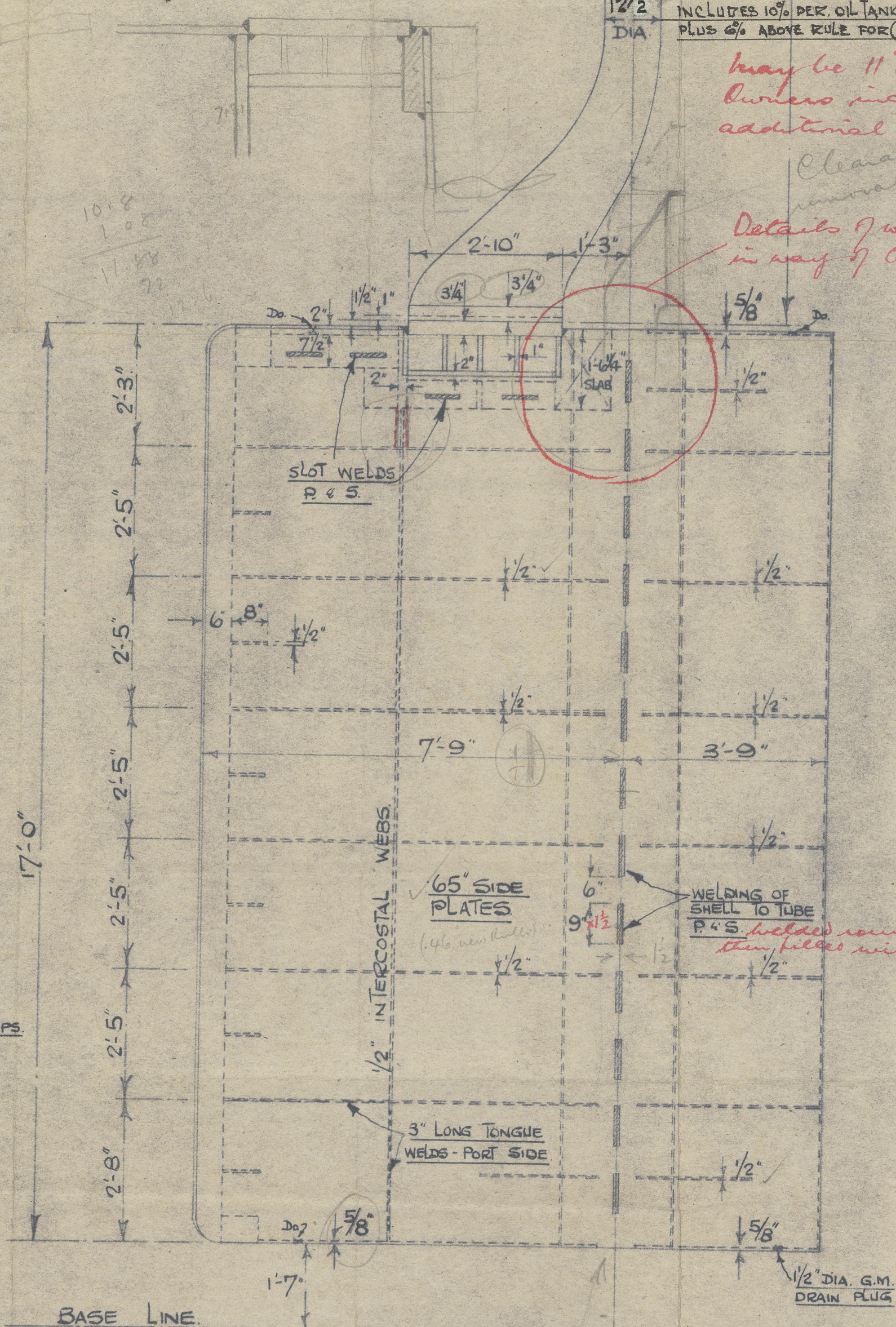
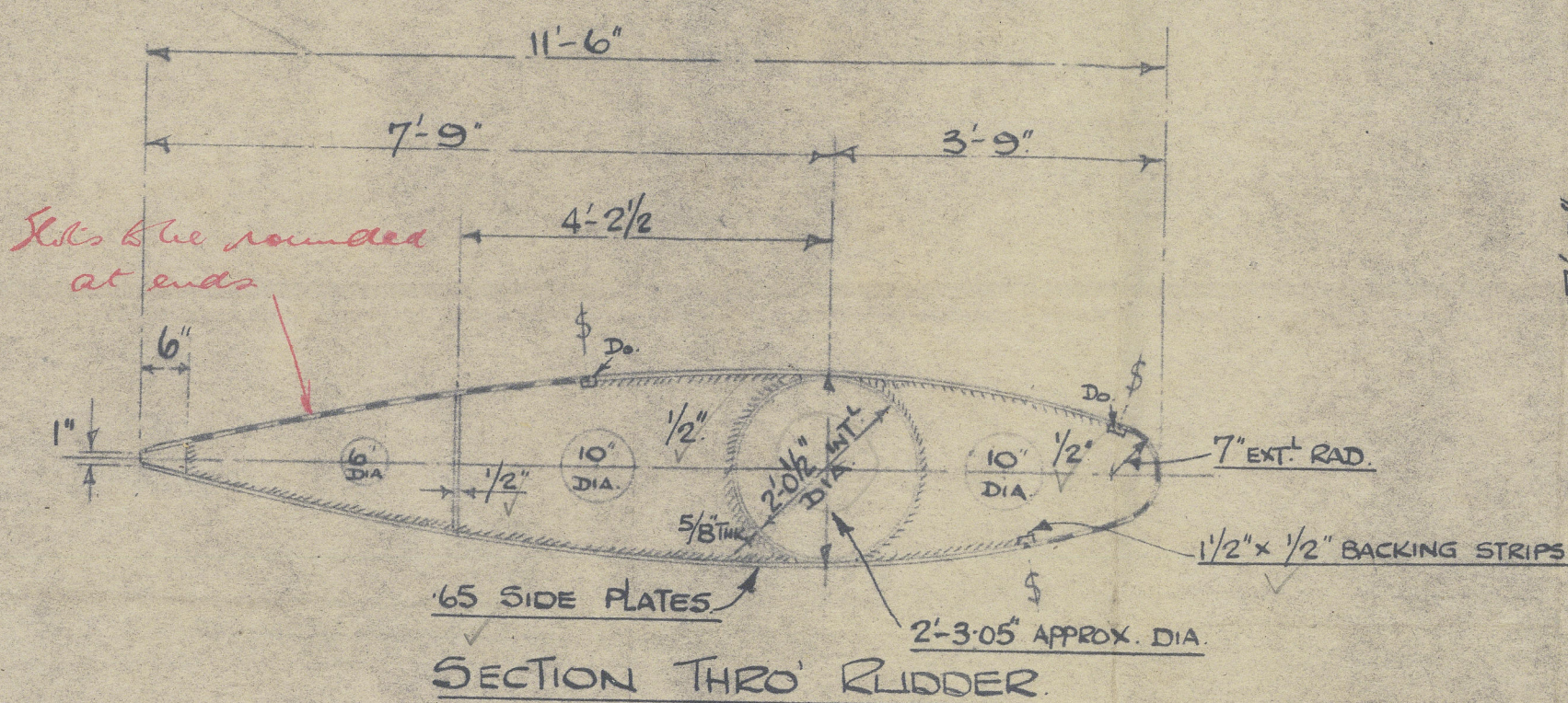
SHEET 1.

FOR BACK POST SEE SHEET 2.

408 = Rule A x D.
 Rule diam = 10.02" + 10% Tanker increase = 11"



Section 66.5 8-3/4" DIA. FITTED BOLTS
 WITH NUTS & SPLIT PINS.
 a 57.7 6-3/8" dia for 12" head.



*See later plan of
 Steady bearing.
 Stock now 11 3/8"*

*May be 11" (excluding
 corner increase)
 provided additional
 bearing fitted
 Details of welded connections
 in way of bearing to be submitted*

$$\frac{510}{119} = 76 \frac{1}{2}$$

$$\frac{510}{102} = 498$$

12.10.48 70

COLVILLE CONSTRUCTIONAL Coy. Ltd.
GLENGARNOCK - Ayrshire.

Drawn W.W.J. 28/6/48 ENQUIRY No. 3294 JOB No.
 Traced
 Checked
 Rechecked 1/2" = 1'-0" DRAWING No. 3294/1A

Rosa Maersk. ★

RECORDS DEPT..
LONDON

BLYTH D.D. & S.B.CO.

YARD NOS. 342-3

© 2021

M.S. FABRICATED

Rudder Lloyd's Register
Foundation

011235-011243-0002