

# Lloyd's Register of Shipping.

 Index No. 42020  
 (For London Office only).

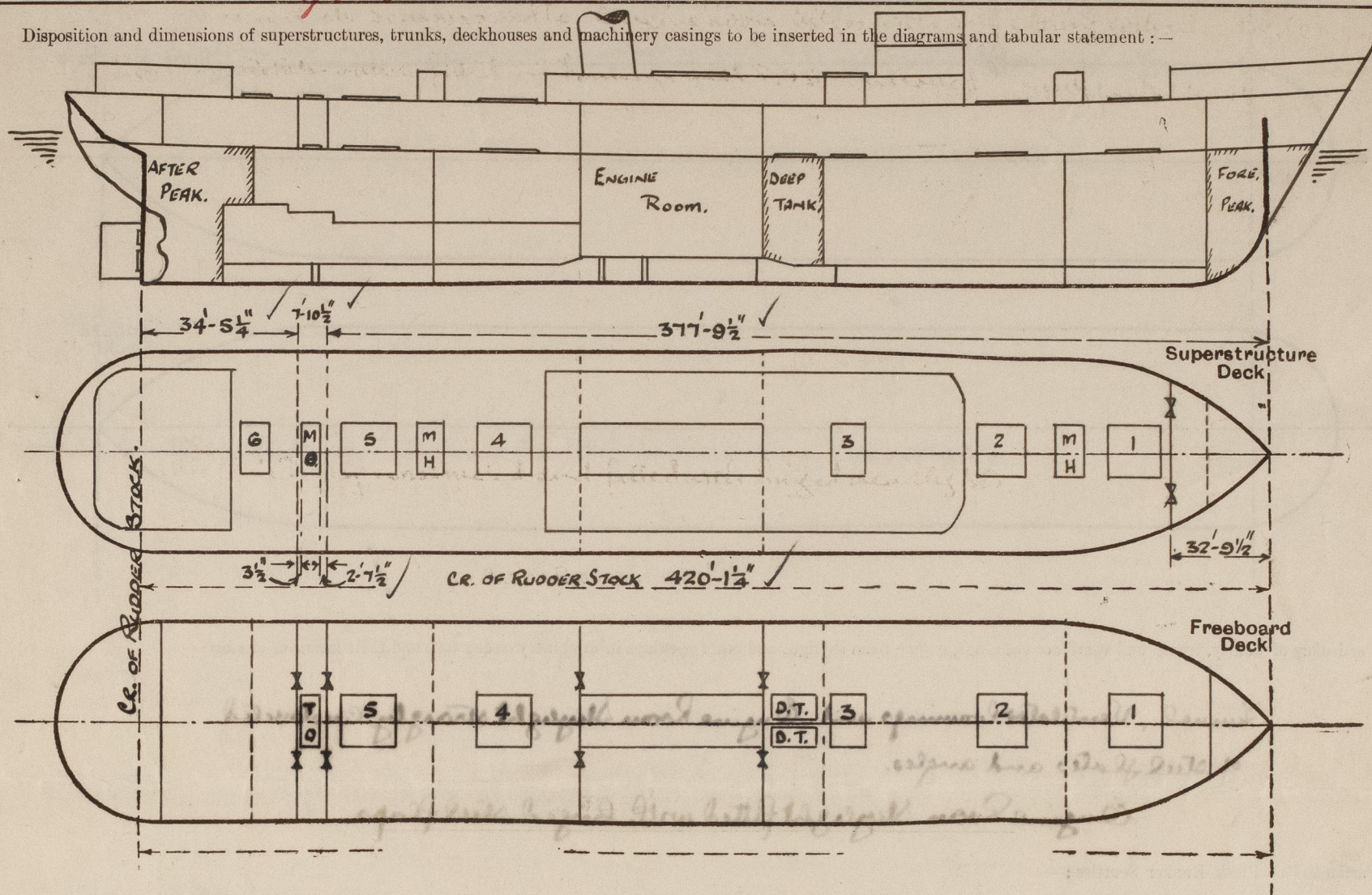
11 NOV 1949

## SURVEYS FOR FREEBOARD.

(CONDITIONS OF ASSIGNMENT.)

"ARCHON JERAFIM"Ship's Name ex "DARTMOOR"Port of Survey Sunderland.Official Number 183156Surveyor's Signature Nick F.H. DuncanNationality and Port of Registry British Greek London PiraeusDate of Survey During Construction.

Disposition and dimensions of superstructures, trunks, deckhouses and machinery casings to be inserted in the diagrams and tabular statement:—



Particulars of Superstructures, Trunks, Casings, Deckhouses.

	Coaming	Plating	Stiffeners	Spacing	End Attachments of Stiffeners	Size of Openings	Height of Sills	Height of Casings
Poop Bulkhead ... ..	30"	30"	5x3x36	27"	None.	4'-1" x 37"	18"	9'0" ✓
Raised Quarter Deck Bulkhead ...	✓							
Bridge, After Bulkhead ... ..	✓							
Bridge, Forward Bulkhead ... ..	✓							
Forecastle Bulkhead {ON ESS DK. ON FSD DK.}	30" 30"	30" 30"	4x3x32 5x3x36	26" 27"	None.	4'-1" x 37" 4'-1" x 37"	18"	9'0" ✓
Trunk, Aft ... ..	✓							
Trunk, Forward ... ..	✓							
Exposed Machinery Casings on Freeboard or Raised Quarter Decks ...	✓							
Exposed Machinery Casings on Superstructure Decks ... ..	✓							
Machinery Casings within Superstructures not fitted with Class I Closing Appliances ... ..	28"	28"	3 1/2 x 3 x 30	30"	None.	None.	None	9'0"
Deckhouses on Flush Deck Ships ...	✓							

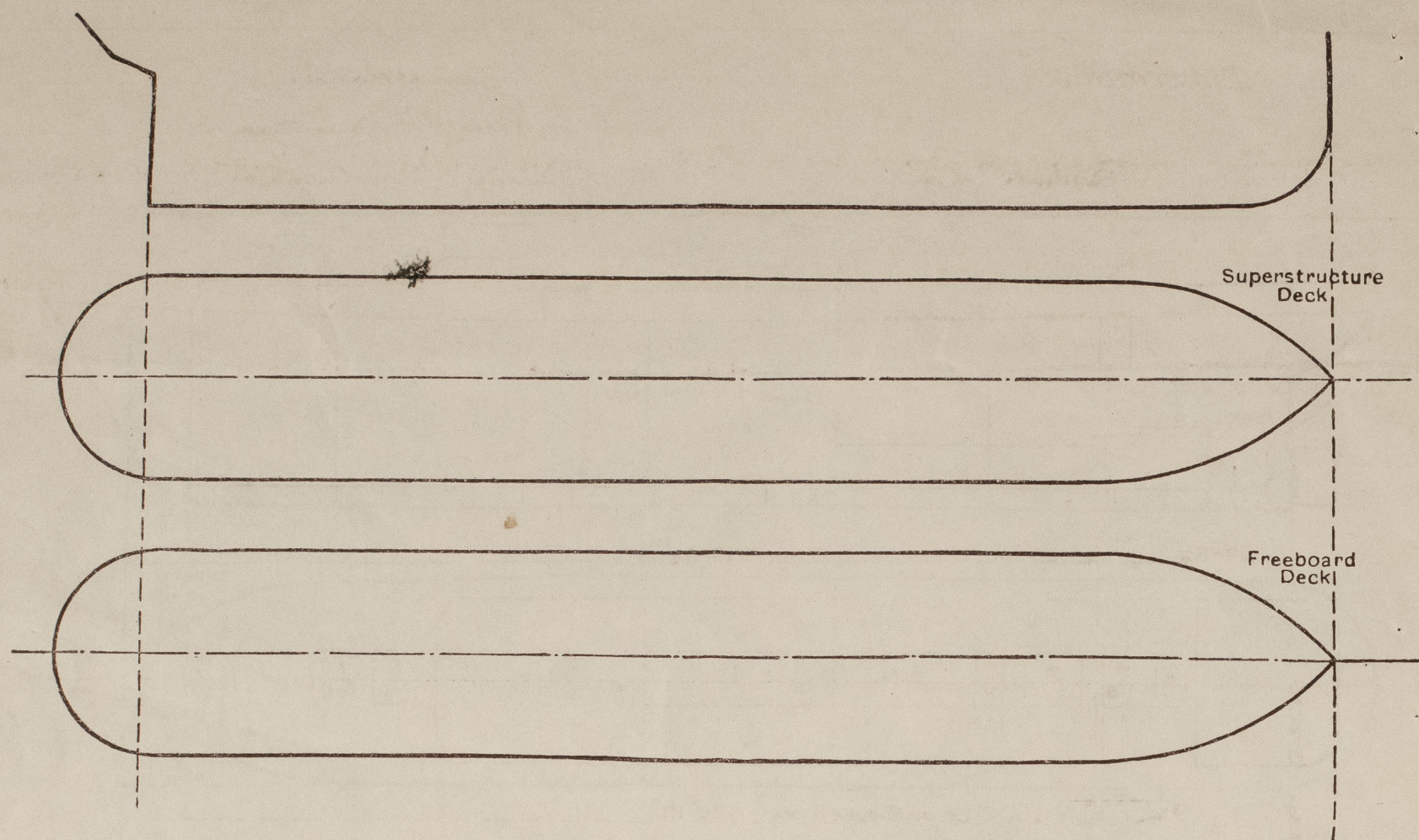
Particulars of Closing Appliances (state if capable of being manipulated from both sides).

Poop Bulkhead ... ..	2 1/2" Sliding boards fitted in channels. ✓
Raised Quarter Deck Bulkhead ...	✓
Bridge, After Bulkhead ... ..	✓
Bridge, Forward Bulkhead ... ..	✓
Forecastle Bulkhead {ON ESS DK. ON FSD DK.}	2 1/2" Sliding boards fitted in channels. ✓
Exposed Machinery Casings on Freeboard or Raised Quarter Decks ...	✓
Exposed Machinery Casings on Superstructure Decks ... ..	✓
Machinery Casings within Superstructures not fitted with Class I Closing Appliances ... ..	None No OPENINGS. ✓
Deckhouses on Flush Deck Ships ...	✓



# PARTICULARS OF PROTECTION TO OPENINGS, ETC.

The following diagrams should be used to indicate the positions of cargo and coaling hatchways, gangway, cargo and coaling ports, ventilators, companionways, etc., which would affect the seaworthiness of the ship:—



Particulars of fiddle, funnel and ventilator coamings, engine room skylight and other openings in machinery casing tops and their means of closing:—

Funnel, Ventilator coamings and Engine Room Skylight strongly constructed of steel plates and angles.  
Engine Room Skylight fitted with hinged steel flaps.

Particulars of Flush Bunker Scuttles:—

None

Particulars of Companionways:—

None

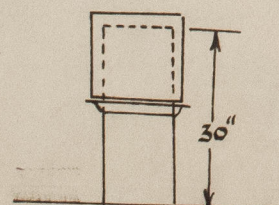
Particulars of Ventilators in exposed positions on freeboard and superstructure decks:—

ON UPPER DK.	No.	Diam.	Coaming	To	Remarks
	6	24"	30" x 40"	To holds.	
	1	10"	30" x 32"	To tunnel escape.	
	2	8"	30" x 32"	To tunnel.	
	1	8"	30" x 30"	To steering gear.	
	1	8"	30" x 30"	To Bosun's Store.	
	1	8"	30" x 30"	To Hospital.	
	6	8"	30" x 30"	To Accommodation.	
ON FEEL DK.	No.	Diam.	Coaming	To	Remarks
	4	14"	50 1/2" x 36"	To Deep Tank (supported by Brts)	
	2	9"	32 1/2" x 32"	To holds.	
	2	24"	36" x 40"	To holds.	
	1	8"	21" x 34"	To Store fwd.	
	2	6"	30" x 30"	To Carpenter shop.	

4 hnd Vents 34" diam Coaming 16" x 40" to hold on mast houses.

Particulars of Air Pipes in exposed positions on freeboard, raised quarter, or superstructure decks:—

All Air Pipes of Patent type and in accordance with approved plan height to opening 30"



Particulars of Gangway Cargo and Coaling Ports:—

None

Particulars of Scuppers and Sanitary Discharge Pipes:—

Sanitary and Soil pipes discharges from houses on and above upper deck led overboard with storm valves at Shell. Tween deck scuppers led to Engine Room bilges with self closing cocks in Engine Room. One 5" S.D. N. Retain valve fitted in Foreage well P.S. controlled from upper deck with indicator.

Particulars of Side Scuttles:—

Side Scuttles strongly constructed and fitted with hinged deadlights.

Vertical distance of Sill of lowest Side Scuttle above top of keel

38'-6"

Particulars of Guard Rails:—

Open Rails 4'-0" in height fitted 7'-0". Three rails with stanchions spaced 5'-0" apart. Steel Bulwarks amidships in way of accommodation 4'-0" in height.

Particulars of Gangways, Lifelines, etc.:—

Lifeline with fittings fitted P.S. fore and aft.

## Particulars of Freeing Arrangements.

	Length of Bulwark	Height of Bulwark	Size of Freeing Ports	Number each side	Area each side	Rule area each side
After Well Amidships On Superstructure Decks	133'-0"	4'-0"	24" x 18"	2		
Forward Well	...					

State position of each freeing port ... (F. and A. position and height above deck edge) { After Well:— Forward Well:—

State whether the freeing ports are fitted with shutters, bars, or rails, and give particulars of such:—

one bar fitted 7'-0".

Additional area where sheer is less than standard.



# PARTICULARS OF PROTECTION TO OPENINGS, ETC.

HATCHWAYS ON FREEBOARD AND SUPERSTRUCTURE DECKS.											
← UPPER DECK → FREEBOARD DECK. →											
Description of Hatchway	Nº 1	Nº 2, 4, 5	Nº 6	Nº 1	Nº 2	Nº 3	Nº 4	Nº 5	TONNAGE HATCH.	Nº 3	BOAT DK.
Dimensions of Hatchway	31'-6" x 22'-0"	31'-6" x 22'-0"	8'-7 1/2" x 17'-11"	31'-6" x 22'-0"	31'-6" x 22'-0"	12'-1 1/2" x 22'-0"	31'-6" x 22'-0"	31'-6" x 22'-0"	4'-11 1/2" x 22'-0"	28'-10 1/2" x 20'-0"	
COAMINGS											
Height above Deck	30 1/2"	30 1/2"	30 1/2"	10"	10"	10"	10"	10"	12"	30 1/2"	
Thickness	50"	50"	44"	40"	40"	40"	40"	40"	50"	44"	
Stiffeners	7 x 3 1/2 x 40	7 x 3 1/2 x 40	7 x 3 1/2 x 40	None	None	None	None	None	None	7 x 3 1/2 x 40	
Brackets, Stays	2	2	2	None	None	None	None	None	None	2	
HATCH BEAMS											
Number	5	5	4	5	5	2	5	5		5	
Spacing	5'-3"	5'-3"	4'-3 3/4"	5'-3"	5'-3"	4'-0 1/2"	5'-3"	5'-3"		4'-8 1/4"	
Scantling and Sketch	21" x 36"	15 1/2" x 36"	11 1/2" x 30"	23 1/2" x 40"	24" x 40"	22 1/2" x 40"	22 1/4" x 38"	22 1/2" x 40"	None	13" x 34"	
Bearing Surface	4"	4"	4"	4"	4"	4"	4"	4"		4"	
FORE AND AFTERS											
Number	✓	✓	✓	✓	✓	✓	✓	✓	✓	✓	
Spacing											
Unsupported Lengths											
Scantling* and Sketch											
Bearing Surface											
HATCH COVERS											
Material	STEEL	STEEL	STEEL	W.P.	W.P.	W.P.	W.P.	W.P.	W.P.	W.P.	W.P.
Thickness	1/8" x 3"	1/8" x 3"	1/8" x 3"	2 1/8"	2 1/8"	2 1/8"	2 1/8"	2 1/8"	2 1/8"	2 1/8"	2 1/8"
How fitted	7.0 A.	7.0 A.	7.0 A.	7.0 A.	7.0 A.	7.0 A.	7.0 A.	7.0 A.	7.0 A.	7.0 A.	7.0 A.
Bearing Surface	3"	3"	3"	3"	3"	3"	3"	3"	3"	3"	3"
Spacing of Cleats	18"	18"	18"	18"	18"	18"	18"	18"	✓	18"	
Number of Tarpaulins	2	2	2	1	1	1	1	1	✓	2	
<p>*Are wood fore and afters steel shod at all bearing surfaces? <i>None fitted</i></p> <p>Are battens and wedges efficient and in good condition? <i>Yes.</i></p> <p>Are tarpaulins in good condition and in accordance with rule requirements? <i>Yes.</i></p> <p>Are lashings provided in accordance with rule requirements? <i>Yes.</i></p>											

Particulars of any special features:—

## UPPER DECK.

Hatch to Fore Hatch 3'-6" x 3'-0" Coaming 9" 2 1/8" wood cover, 2 Tarpaulins, Cleats 18" apart. (inside fore)

4 Escape hatches to Tween decks 2'-6" x 2'-0" Coamings 30" 2 1/8" wood covers, 2 Tarpaulins, Cleats 18"

Hatch to Steering Gear 2'-6" x 2'-6" Coaming 18", Covers 2 1/8" wood, 2 Tarpaulins, Cleats 18"

## FREEBOARD DECK.

Hatch P.O.S. to Deep Tank 15'-9" x 10'-0" Coaming 10" bolted steel cover, 46" with 10" bulb plate stiffeners 2'-7 1/2" apart.

22 Escape hatches to holds 2'-6" x 2'-0" Coamings 9" x 50" 2 1/8" wood covers hinged w.t. with strong bolts & felt, 1 Tarpaulin each hatch.

4 Trimming hatches to holds 2'-0" x 1'-11 1/2" Coamings 10" B.A., Covers 2 1/8" wood covers hinged, 1 Tarpaulin.

Hatch to Fore Peak 3'-6" x 2'-9" Coaming 9" with 40" bolted plate cover.

The Hatch Webs fitted are of the "HINGE" type roller beam and are prevented from falling by retaining strips on coamings

The Hatch Covers fitted to UPPER DK are "MEPCO" steel hatch covers

Endorsement at first survey and at surveys for renewal of Certificate:—

The fittings and appliances are in accordance with the particulars shown on this form (or as now modified) and are in good condition.



© 2021

Lloyd's Register Foundation