

Lloyd's Register of Shipping.

SURVEYS FOR FREEBOARD.

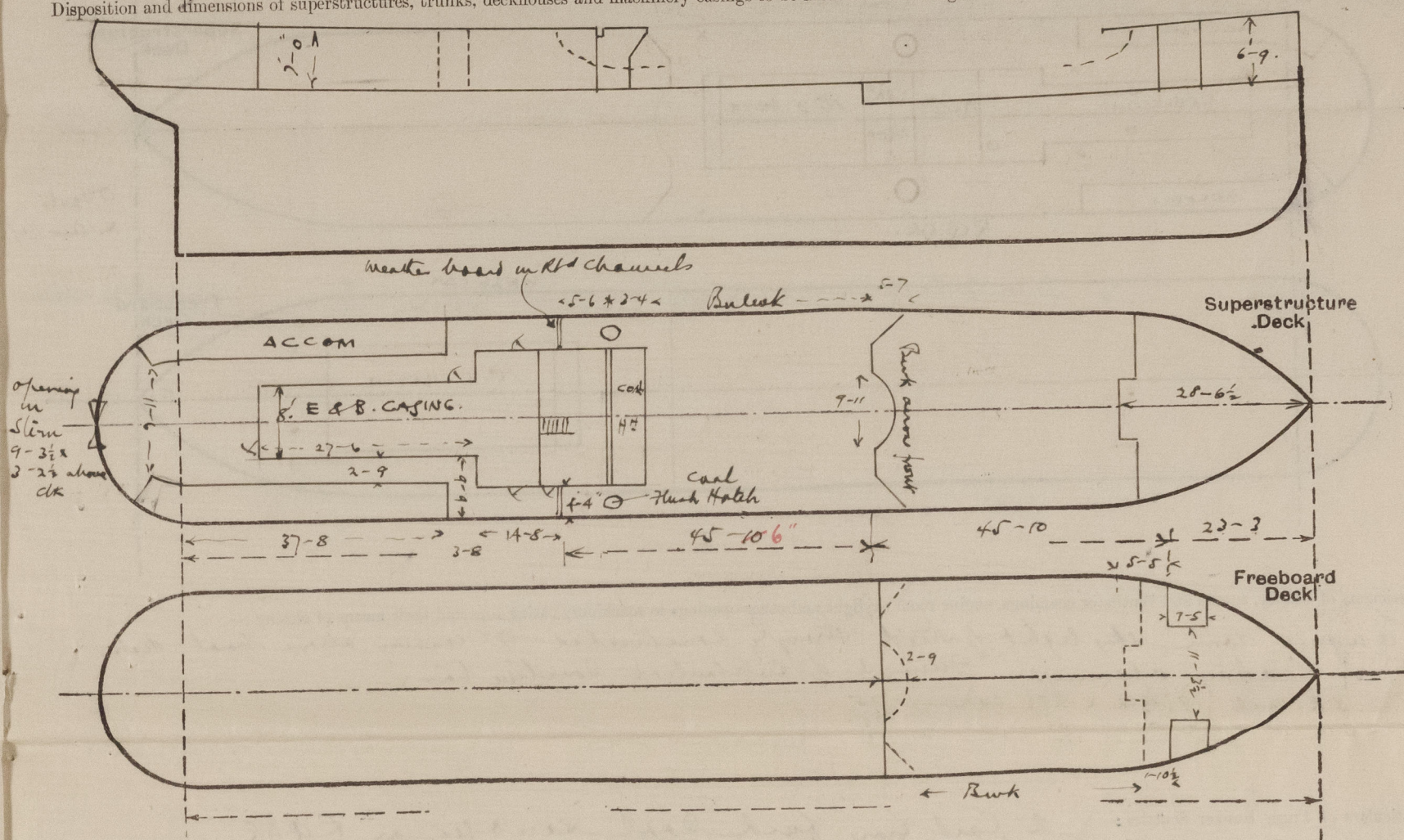
(CONDITIONS OF ASSIGNMENT.)

2nd 2181.

MAR 11 1938

Ship's Name *G.S. BROOMFIELD. (No 841.)*Port of Survey *Lytham*Official Number *166230*Surveyor's Signature *W. Webb*Nationality and Port of Registry *Liverpool. British*Date of Survey *during construction*

Disposition and dimensions of superstructures, trunks, deckhouses and machinery casings to be inserted in the diagrams and tabular statement:—



Particulars of Superstructures, Trunks, Casings, Deckhouses.

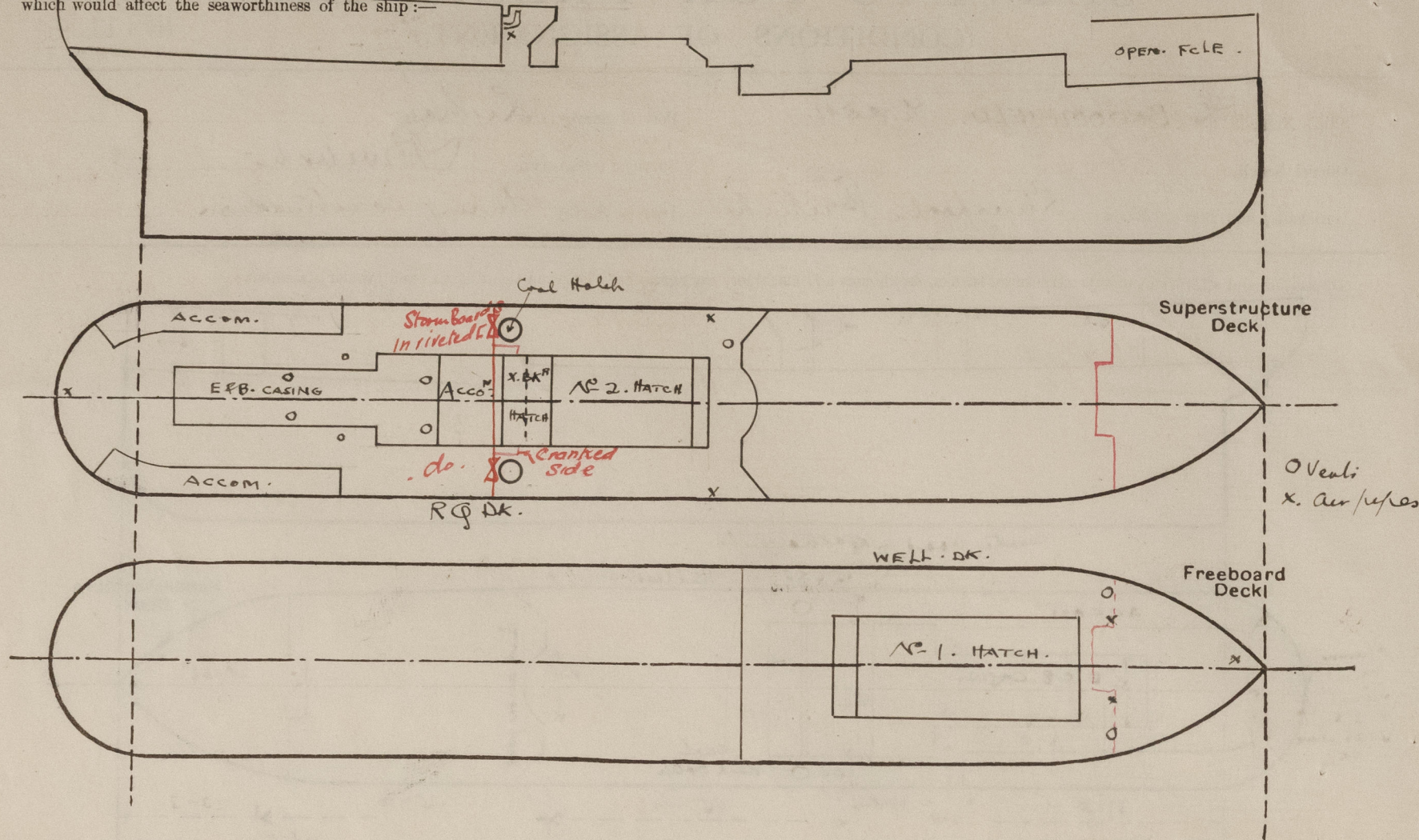
	Coaming	Plating	Stiffeners	Spacing	End Attachments of Stiffeners	Size of Openings	Height of Sills	Height of Casings
Poop Bulkhead								
Raised Quarter Deck Bulkhead ...	30	30	Stiffeners & Diaphragms	6-0	mean 5. angles	None	✓	3-9
Bridge, After Bulkhead								
Bridge, Forward Bulkhead								
Forecastle Bulkhead <i>sidehouses only</i>								6-9
Trunk, Aft								
Trunk, Forward								
Exposed Machinery Casings on Freeboard or Raised Quarter Decks ...	24	20	2 1/2 x 20	44	Rivet through top & bottom	4 @ 4-0 x 1-9 1/2	65	7-0
Exposed Machinery Casings on Superstructure Decks								
Machinery Casings within Superstructures not fitted with Class I Closing Appliances								
Deckhouses on Flush Deck Ships ...								

Particulars of Closing Appliances (state if capable of being manipulated from both sides).

Poop Bulkhead	} <i>no openings.</i>
Raised Quarter Deck Bulkhead ...	
Bridge, After Bulkhead	
Bridge, Forward Bulkhead	
Forecastle Bulkhead	} <i>sidehouses only. steel hinged doors operated both sides. open.</i>
Exposed Machinery Casings on Freeboard or Raised Quarter Decks ...	
Exposed Machinery Casings on Superstructure Decks	✓
Machinery Casings within Superstructures not fitted with Class I Closing Appliances	✓
Deckhouses on Flush Deck Ships ...	✓

PARTICULARS OF PROTECTION TO OPENINGS, ETC.

The following diagrams should be used to indicate the positions of cargo and coaling hatchways, gangway, cargo and coaling ports, ventilators, companionways, etc., which would affect the seaworthiness of the ship:-



Particulars of hiddle, funnel and ventilator coamings, engine room skylight and other openings in machinery casing tops and their means of closing:-

Engine room skylight of steel strongly constructed 9" coaming above head deck.
No hiddle openings. Funnel of substituted Corliss bar.
2 B.R. vents 19" dia x 4 1/2" coaming .75
2 E.R. " 14 " 3 1/2 " coaming .25

Particulars of Flush Bunker Scuttles:-

2 Coal iron flush coal scuttles on R.Q. Dk.
of strong construction secured by chain

Particulars of Companionways:-

Aft. Entrance into Saloon access on R.Q. Dk. in steel house 1/2" thick framed door
operated with side. Door 4-10 x 1-10. Sill 5".
do. do. through deck house on top
Companion aft on head deck out gives access to open
part of R.Q. Dk. aft

Particulars of Ventilators in exposed positions on freeboard and superstructure decks:-

2-5" Vents 30" coaming x .75 on head deck alleyway
2-5" mushroom vents to cabin 28 x 4 coaming
2-4" Vents to deck house front 9-0 above deck
1-8" " to hold 3-3 high fore end well dk
1-9" " " 3-2 fore end R.Q. Dk.
plug & canvas covers supplied

Particulars of Air Pipes in exposed positions on freeboard, raised quarter, or superstructure decks:-

Fore peak air pipe in bow under fore 4 1/2" dia 36" high
2 at fore end of well deck to No. 1 tank 3 1/2" dia x 40" high
2 at fore end R.Q. Dk. to No. 2 tank 3 1/2" dia x 34" high
2 X 1/2" aft peak at aft end R.Q. Dk. through bulkhead with canvas cap
34" high
plug & canvas covers provided

Particulars of Gangway Cargo and Coaling Ports:-

none

Particulars of Scuppers and Sanitary Discharge Pipes:-

Scuppers through funnel
2 scupper pipes (non-rose) draw water from recess
at casing end on R.Q. Dk. discharging just below
R.Q. Dk. through ship's side
2 Sanitary discharges aft fitted with NR Valves
discharging just below R.Q. Dk.

Particulars of Side Scuttles:-

In side houses aft on R.Q. Dk. only.

Vertical distance of Sill of lowest Side Scuttle above top of keel

none below well deck on R.Q. Dk.

Particulars of Guard Rails:-

on fore deck 3-1 high, 2 rails. Stanchions about 4'-6"
apart.
Bulkheads elsewhere including across raised quarter deck fore.

Particulars of Gangways, Lifelines, etc.:-

no gangway
Lifelines fitted in accordance with the regulations
in the fore well.

Particulars of Freeing Arrangements.

	Length of Bulwark	Height of Bulwark	Size of Freeing Ports	Number each side	Area each side	Rule area each side
After Well R.Q. Dk.	45-10.	3-2 1/2 to 3-4.	3 @ 2 1/2 x 15." 4 @ 12 x 8"	3. 4.	11.43 sq. ft.	11.08 sq. ft.
Forward Well	43.96 46-0.	3-8.	3 1/4" x 22." 16 x 9	2. 1.	11.51 sq. ft.	10.90 sq. ft.

State position of each freeing port ... After Well:- 1-0: 9-9: 17-1: 25-6: 23-10. fore aft end bulk.
(F. and A. position and height above deck edge) Forward Well:- 2-4: 6-2: 28-3: fore R.Q. Dk. bulk. 4 1/2 above deck

State whether the freeing ports are fitted with shutters, bars, or rails, and give particulars of such:- shutters on large opening.
Small openings no closing appliances.

Additional area where sheer is less than standard.

2" 1" 1"

PARTICULARS OF PROTECTION TO OPENINGS, ETC.

HATCHWAYS ON FREEBOARD AND SUPERSTRUCTURE DECKS.									
Description of Hatchway		No 1		No 2		Cross Beam Hatch No 1 4.0 x 16.2 10.5 x 10 36.0 above RQAA 42 built into deckhouse stiffened by crank.			
Dimensions of Hatchway		33' x 16-1		27-6 x 16-2					
COAMINGS	Height above Deck	39 at sides		36 at sides					
	Thickness	.42		.42					
	Stiffeners	7 x 3 x 33 BA on sides		7 x 3 x 33 BA on sides only					
	Brackets, Stays	Beams carried up at web.							
HATCH BEAMS	Number	5		4					
	Spacing	5-6		5-6 5-5-8					
	Scantling and Sketch	21-15 1/2 x 36		18-12 1/2 x 36					
		3 1/2 x 42		3 1/2 x 42					
	Bearing Surface	Four angles		3					
FORE AND AFTERS	Number								
	Spacing								
	Unsupported Lengths								
	Scantling* and Sketch								
	Bearing Surface								
HATCH COVERS	Material	W. P.		W. P.		H. P.			
	Thickness	2 1/4-3		2 1/4-3		2 1/4-3			
	How fitted	2 x A.		2 x A.		2 x A.			
	Bearing Surface	3.		3.		2 x 3.			
Spacing of Cleats		24		14		24			
Number of Tarpaulins		2		2		2 (Incorporated with No 2 Hatchway)			
<p>*Are wood fore and afters steel shod at all bearing surfaces? <input checked="" type="checkbox"/> <i>Yes</i></p> <p>Are battens and wedges efficient and in good condition? <i>Yes</i></p> <p>Are tarpaulins in good condition and in accordance with rule requirements? <i>Yes</i></p> <p>Are lashings provided in accordance with rule requirements? <i>Yes</i></p>									

Particulars of any special features:—

Endorsement at first survey and at surveys for renewal of Certificate:—

The fittings and appliances are in accordance with the particulars shown on this form (or as now modified) and are in good condition.



© 2021

Lloyd's Register Foundation