

Lloyd's Register of Shipping.

Ship's Name *Crackshot*Official No. *148052.*

Memorandum of alterations reported since ship was surveyed for assignment of Load Lines

6 Latch beams renewed in nos 2, 3 & 4 latches

no 2 Latch - 1 renewed
 no 3 Latch. - 3 renewed
 no 4 Latch - 2 renewed

top angles
 6" x 3 1/2" x .60"

3 1/2 x 1 1/2" solid

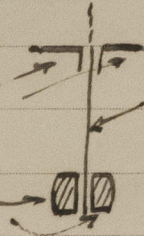


plate .50" x 25"
 depth.

4th April 1939.

J. H. Roberts

Newcastle-on-Tyne.

Noted *Rob.*

6 APR 1939