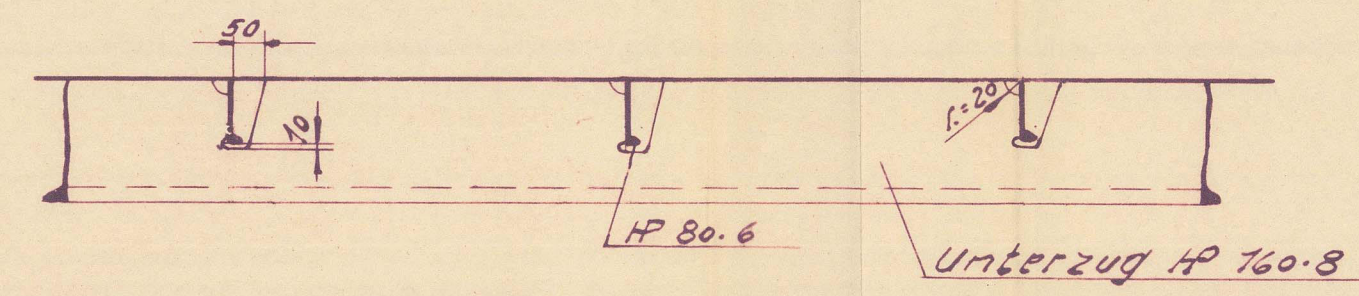
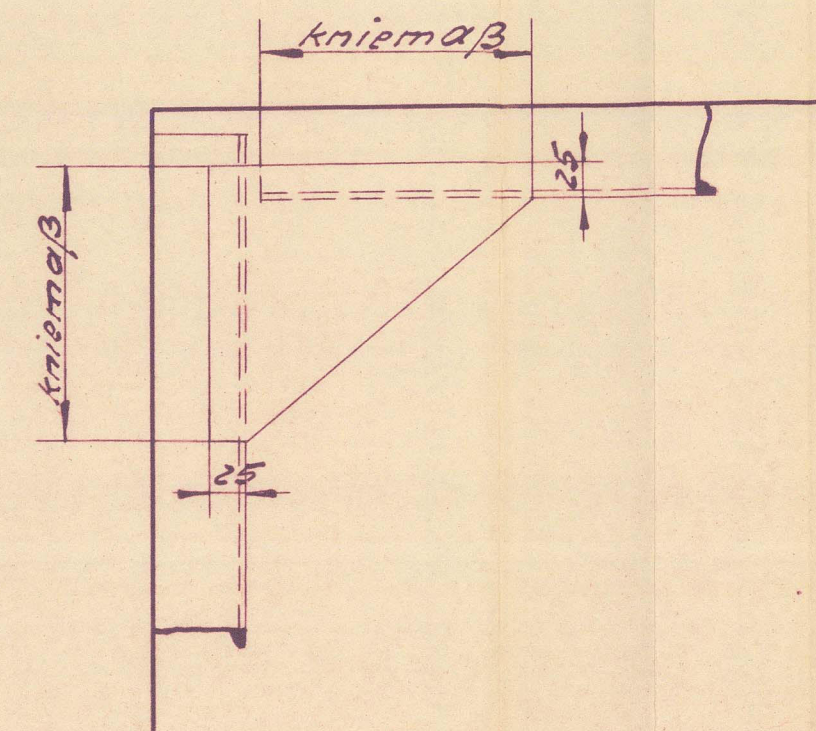


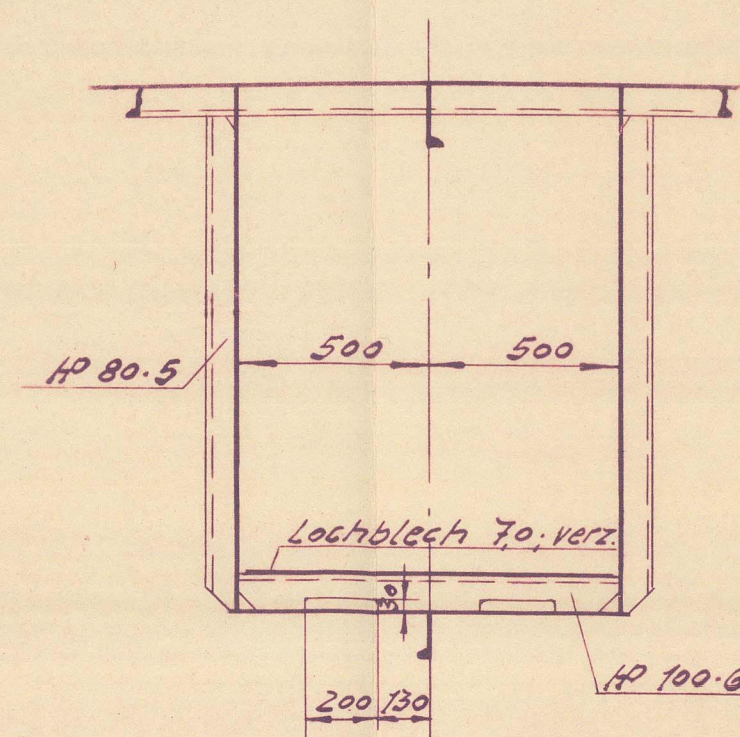
Verbindung Unterzug mit Tecksbalken!



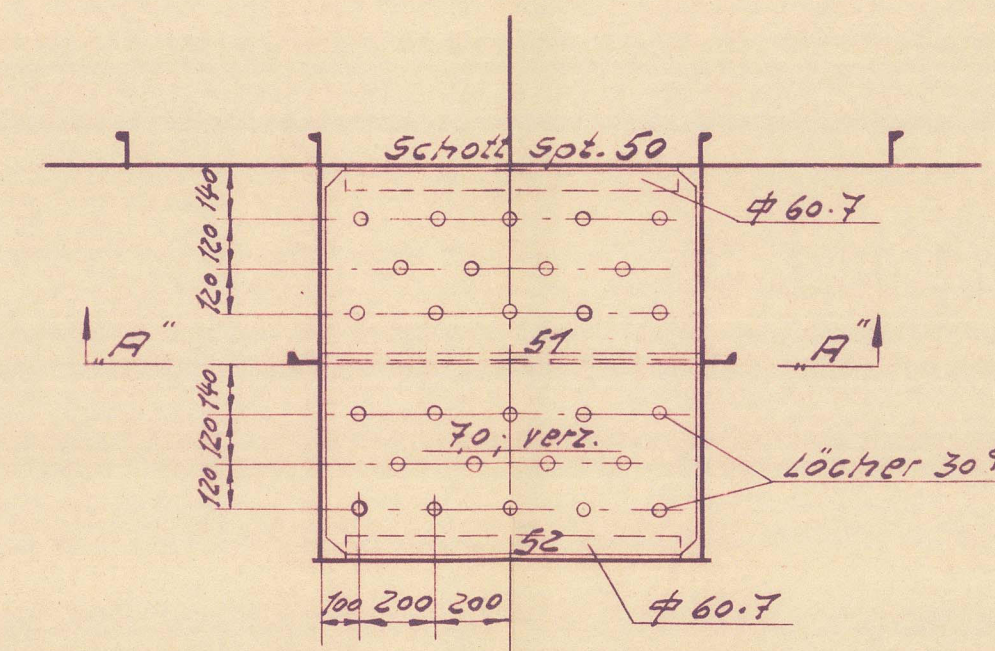
knieüberlappung



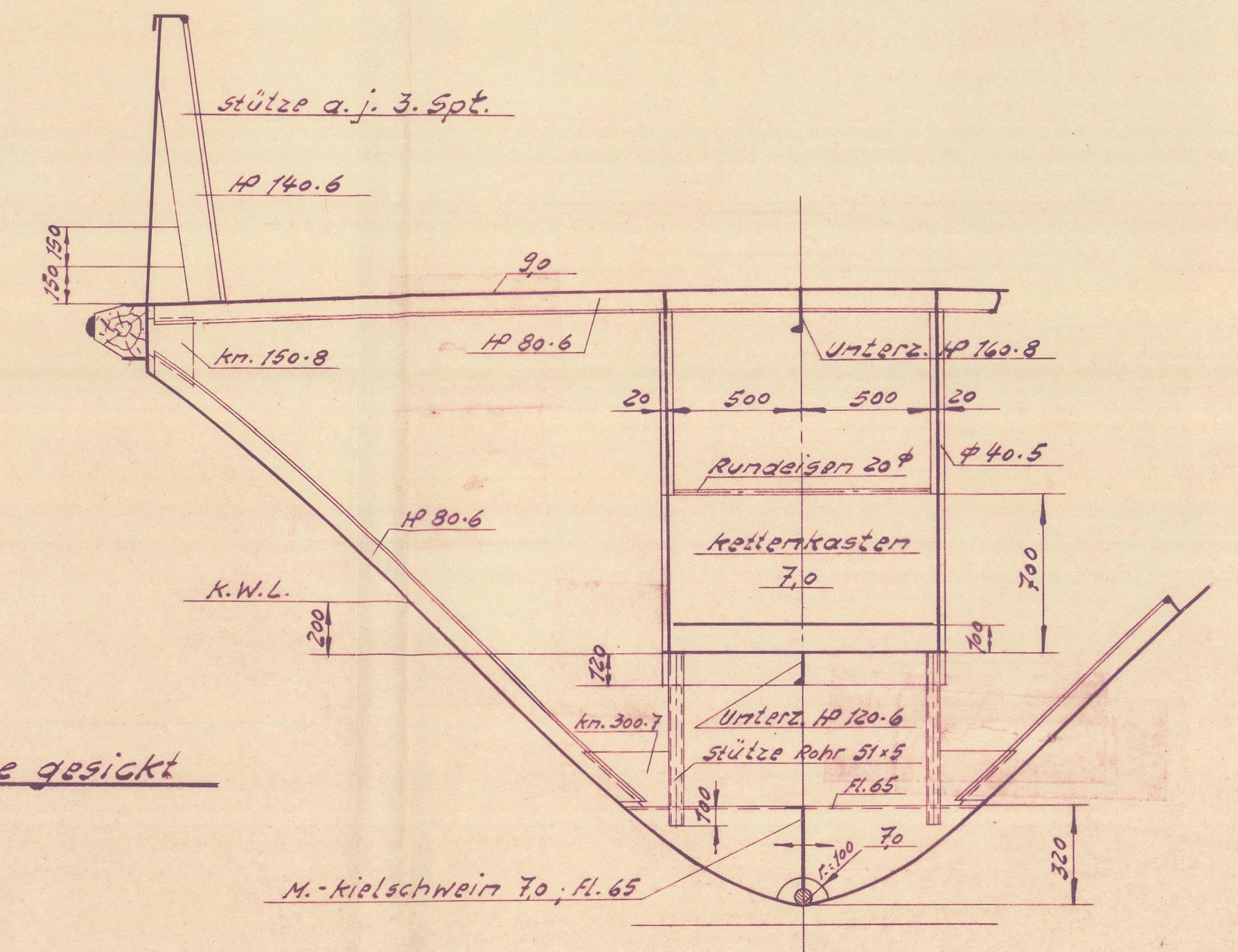
Schnitt A-A



Lochblech

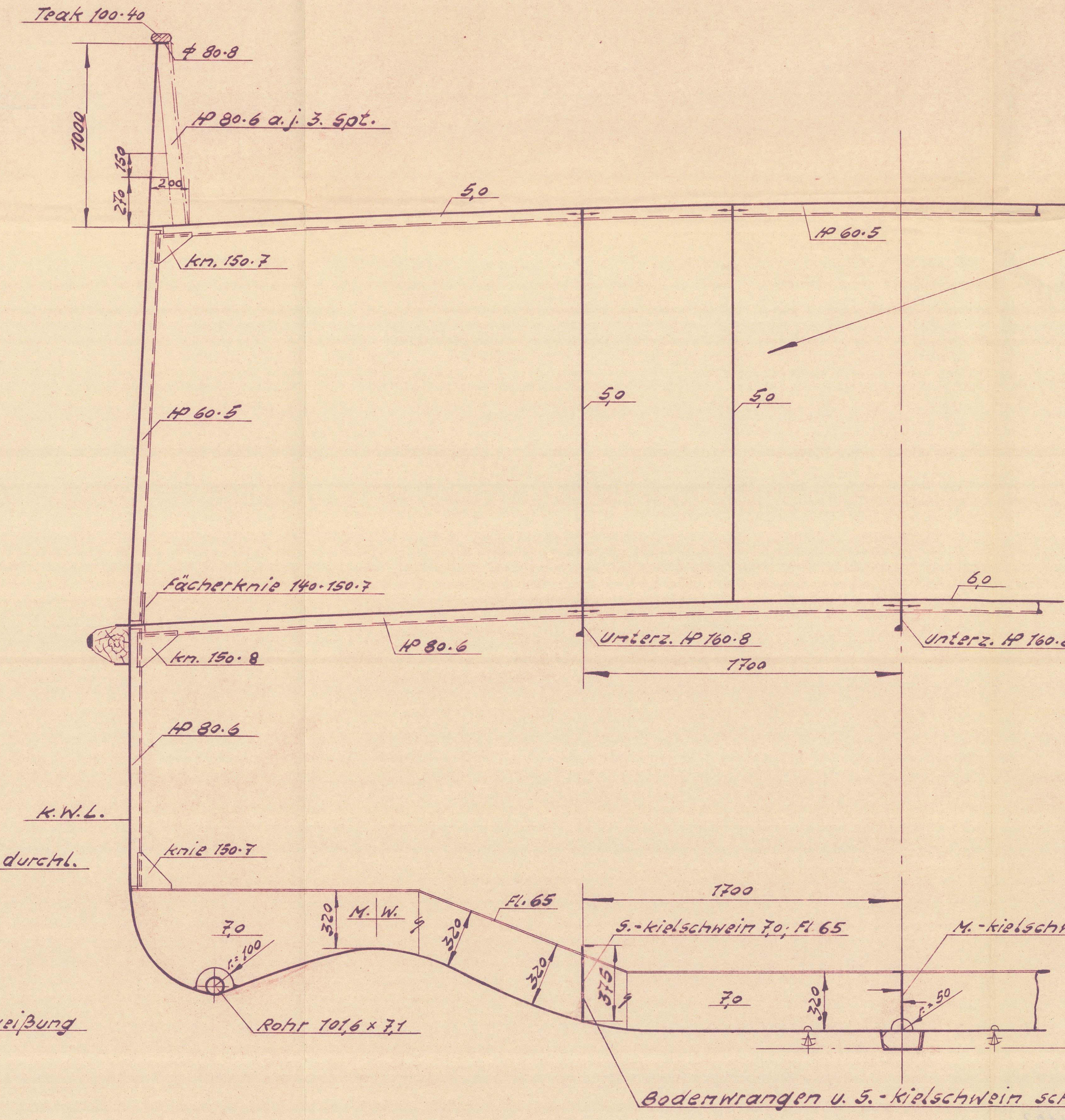


Spt. 52
vom Hinten ges.!

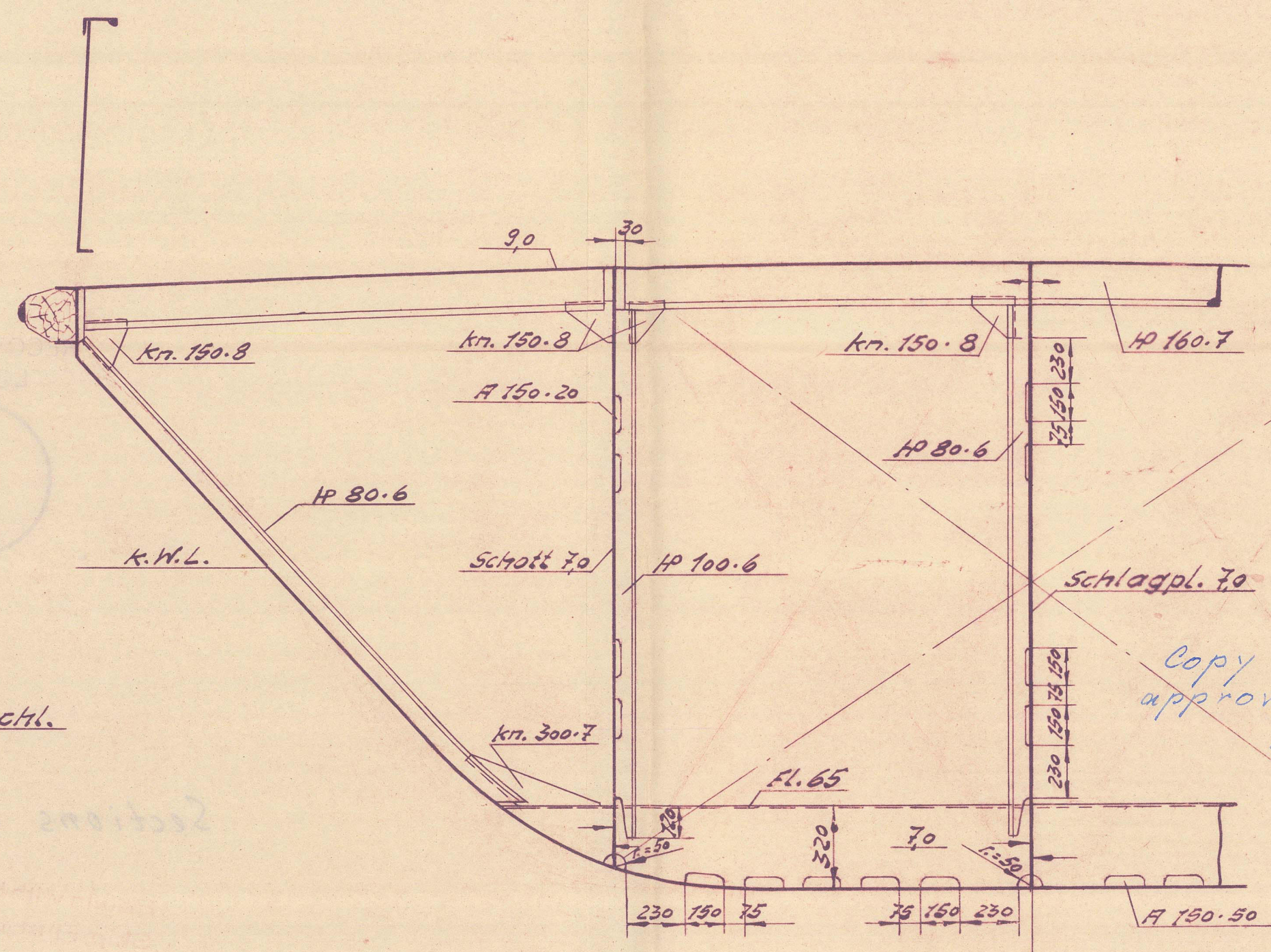


Spt. 11
vom Hinten ges.!

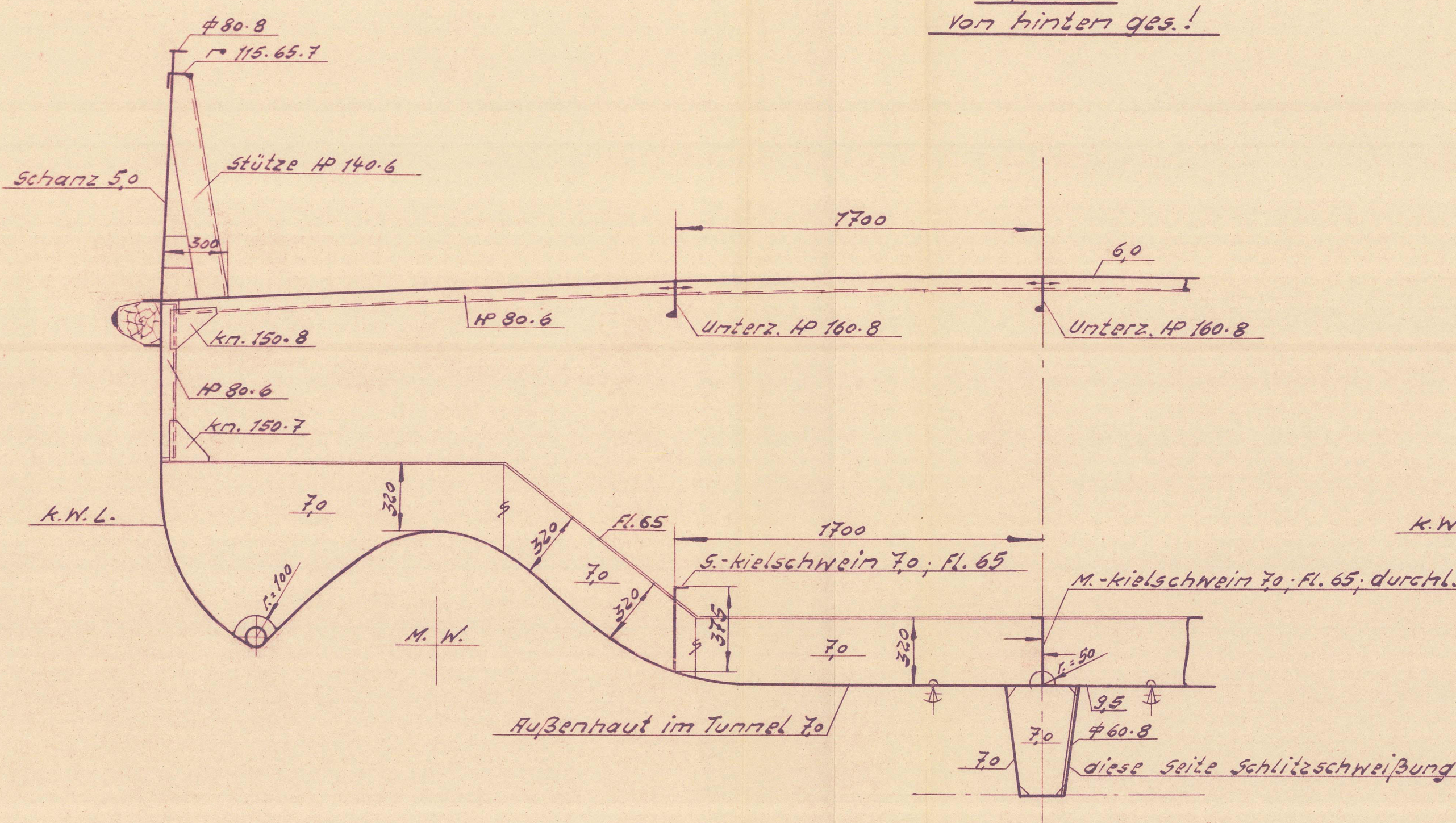
Aufbau-Innenwände gesickt



Spt. 48
vom Hinten ges.!



Spt. 6
vom Hinten ges.!

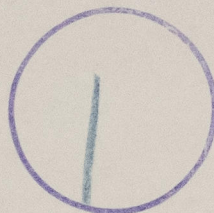


Genehmigt von Lloyd's Register am 12.10.62
Genehmigt von Maierform am 1.10.62

NO 1102
J.W. Kremer Sahn, Schiffswerft, Elmshorn
Querschnitte
Sections [F.A.]
Maßstab: 1:20, 1:10 u. 1:5
Entw. 21.6.62
Zeichnung: 1100/1103-7

011544-011554-0001

RECORDS DEPT.,
LONDON.



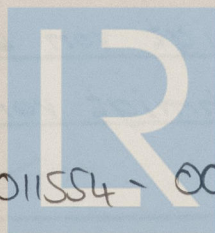
Sections (F+A)

Retain with Hamburg
Ship First Entry

Report No. *13424*

~~SS/MS~~ *WTA ME 64/14* ★

Kramer John, yard No. 1102



© 2021

Lloyd's Register
Foundation

011544 - 011554 - 0001